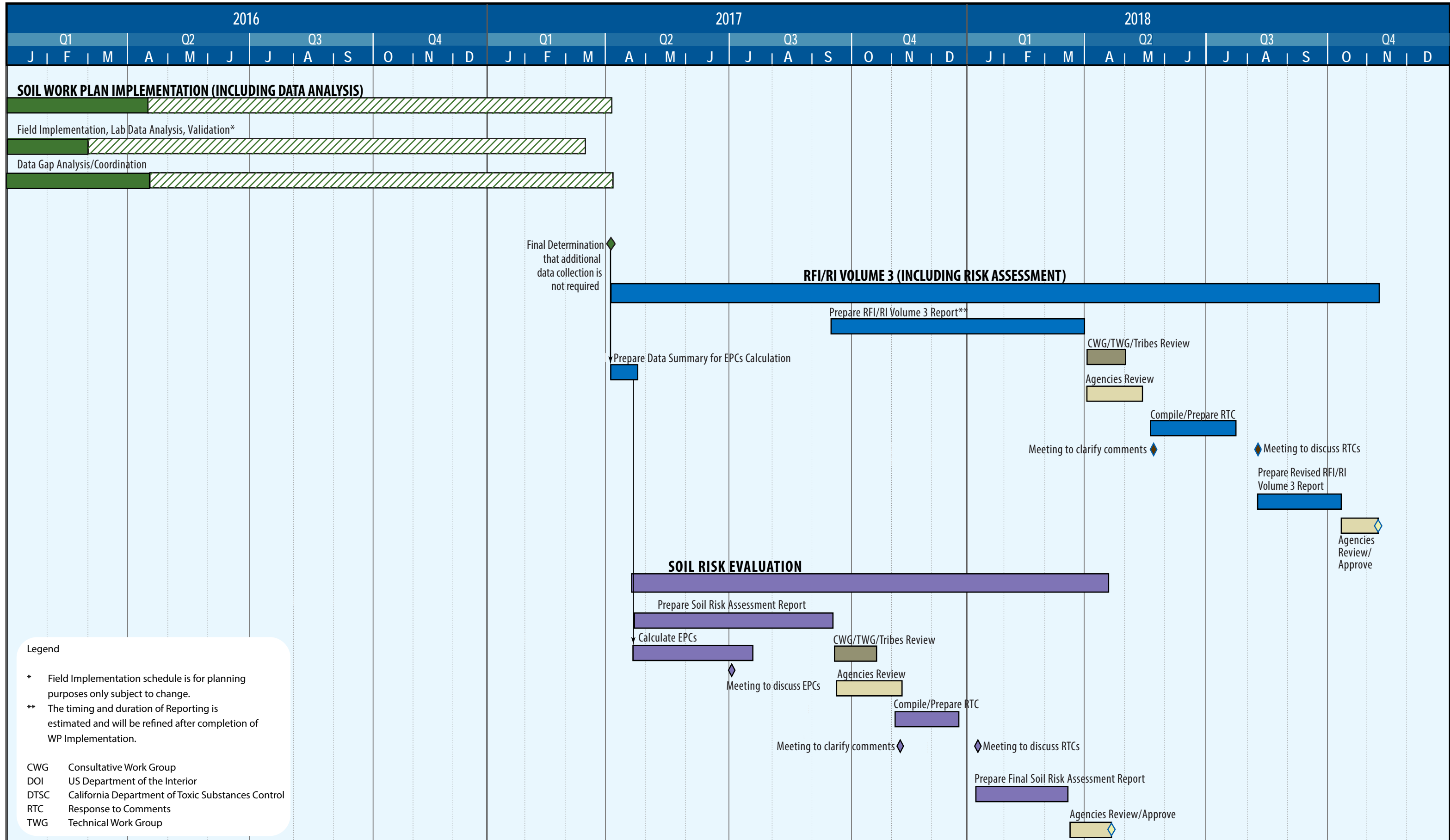


# Soil RCRA Facility Investigation/Remedial Investigation Timeline (2016-2018)



**Legend**

\* Field Implementation schedule is for planning purposes only subject to change.  
 \*\* The timing and duration of Reporting is estimated and will be refined after completion of WP Implementation.

- CWG Consultative Work Group
- DOI US Department of the Interior
- DTSC California Department of Toxic Substances Control
- RTC Response to Comments
- TWG Technical Work Group