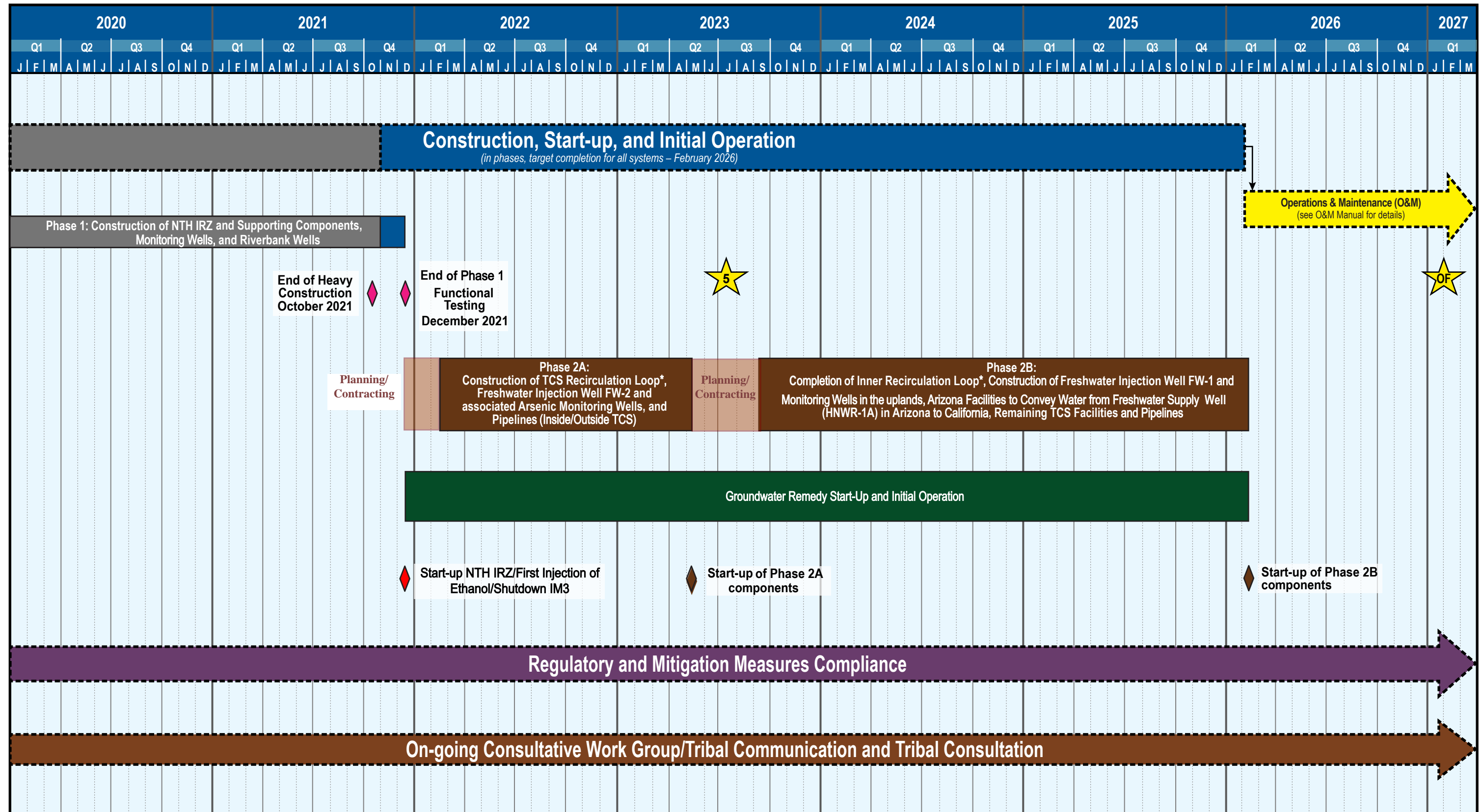


Groundwater Remedy Construction, Start-up, and Initial O&M Schedule



LEGEND

-  Agencies 5-year Review
-  The remedy becomes Operational and Functional (OF) either one year after completion of construction or when the groundwater is determined to be functioning properly and performing as designed

* Per the 2015 Basis of Design Report, the **TCS Recirculation Loop** consists of injection wells in TCS, extraction wells on the Transwestern Bench, and extraction wells in the East Ravine area. The **Inner Recirculation Loop** consists of IRL wells in the uplands and River Bank wells along the riverbank.