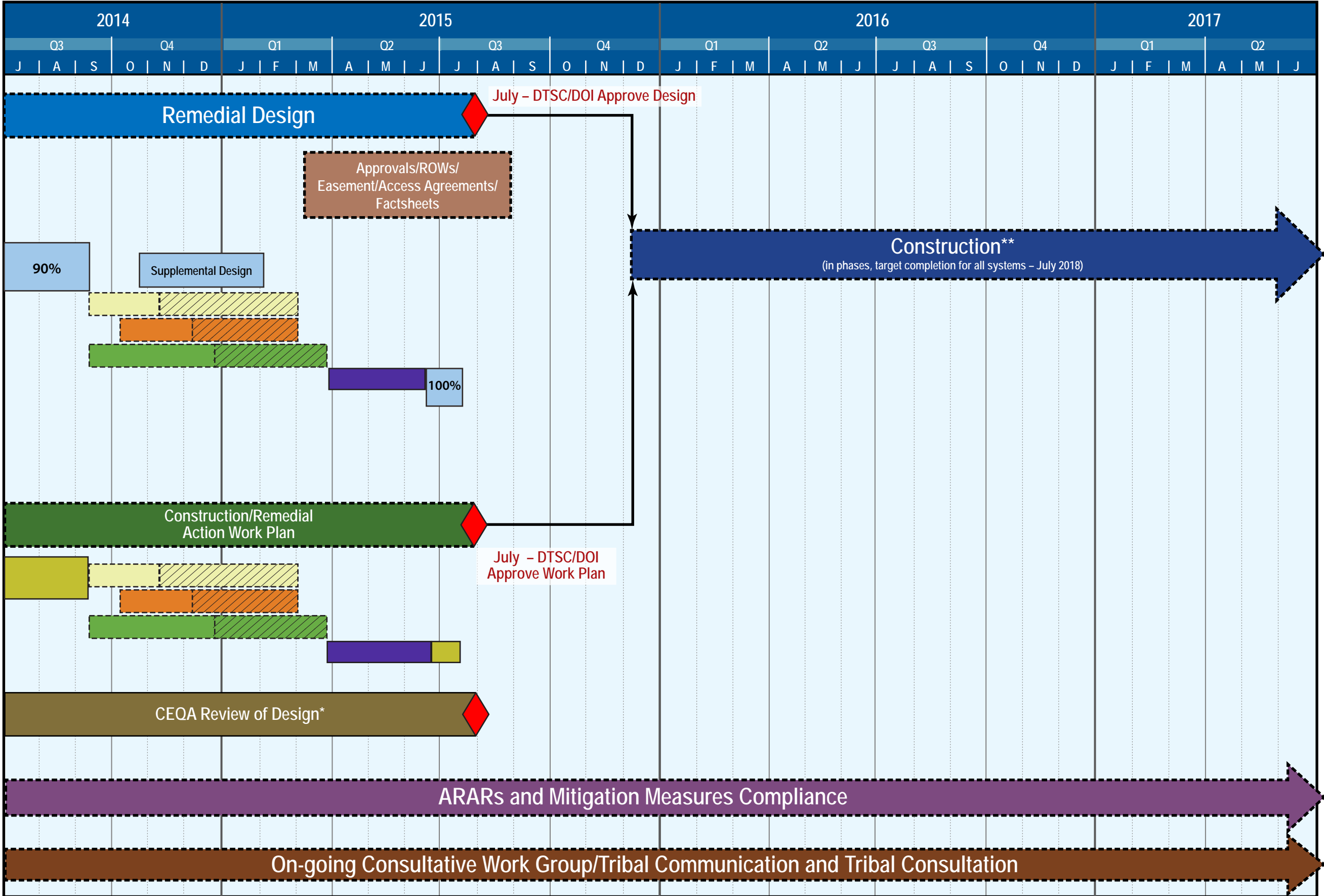


# Groundwater Remedy Design, Construction, and Initial Start-Up Schedule



**LEGEND**

- Draft/Final Work Plan
- Consultative Work Group/Technical Work Group Review
- Preliminary/Intermediate/Pre-Final/Final Design
- Tribal Consultation
- Agencies Review
- Comment Resolution
- Extended Period

\* Duration of review is dependent on type of CEQA document  
 \*\* Start of construction depends on completion of CEQA review