

Topock Review

Remediation

October 2008 Issue 1

SUMMIT LEADS TO BREAKTHROUGH IN PROGRESS ON PG&E TOPOCK GROUNDWATER CORRECTIVE MEASURES STUDY/ FEASIBILITY STUDY

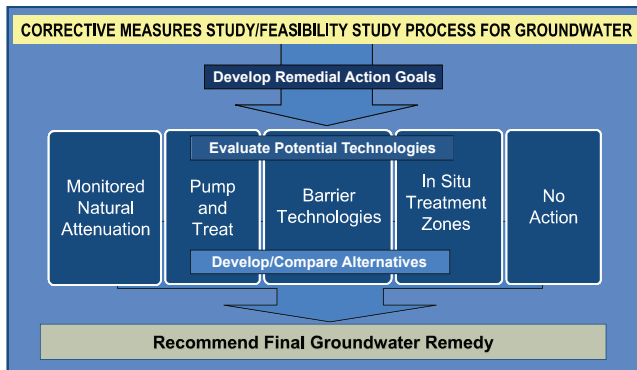
Advisory Board and Consultative Workgroup Input Sought as the Final Remedy Development Process Shifts Into High Gear

The California Department of Toxic Substances Control (DTSC) is overseeing PG&E in taking actions at the Topock Compressor Station to ensure continued protection of the nearby Colorado River, and to clean up a hexavalent chromium groundwater plume. The plume, which extends north from the Station property, resulted from historic discharges of untreated wastewater from the Station to Bat Cave Wash.

Key features of the Plan are:

- PG&E was directed to immediately commence work on the Groundwater Corrective Measures Study/Feasibility Study (CMS/FS), a study designed to identify and evaluate potential clean-up technologies and recommend a clean-up approach for the groundwater contamination.
- The CMS/FS will be conducted in parallel with other key activities including the completion of the groundwater investigation and risk assessment.

In February 2008, DTSC led a Topock Breakthrough Summit which brought together DTSC's leadership and numerous members of the Consultative Workgroup (CWG), including tribal leaders and decision-makers from multiple state and federal agencies.

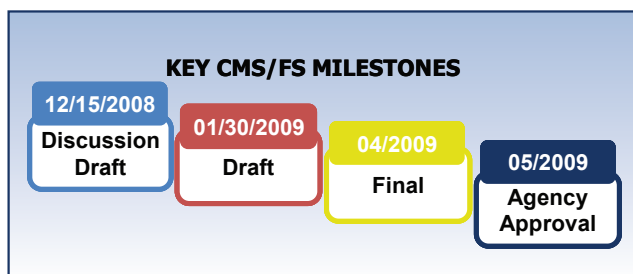


- The CMS/FS process will preserve opportunities for stakeholder and public input as required by law.

DTSC will work concurrently on the Environmental Impact Report (EIR) to evaluate the potential impacts of the proposed cleanup action.

A landmark Summit outcome was the agreement by key stakeholders to collaborate on a plan to expedite the site cleanup schedule, beginning with the groundwater remedy. DTSC formally presented the plan at the August 20, 2008 CWG meeting. The plan reduces the schedule for groundwater cleanup by about eight months. *This marks the first time in the project history that the overall remedy schedule has been significantly reduced.*

Anticipated key milestone dates for the CMS/FS are shown in the box below. DTSC will continue to seek input from the Topock Leadership Advisory Board and Consultative Workgroup as the CMS/FS process progresses.



TOPOCK TICKER:

Mark Your calendar for these important dates.

October 29 – Topock Leadership Advisory Board Inaugural Meeting in Laughlin, NV

November 18 - 19 – Technical Workgroup (TWG) and CWG meetings at BOR Offices in Boulder City, NV

FOR MORE INFO:

Visit DTSC's Topock Project Website: www.dtsc-topock.com

UPCOMING REPORTS:

Final Risk Assessment Work Plan – submitted August 25

Discussion Draft Groundwater Corrective Measure Study/ Feasibility Study (CMS/FS) Report – December 15

Groundwater RFI/RI Volume 2 Addendum – December 10

Groundwater Risk Assessment – December 10

Draft Groundwater CMS/FS Report – January 30, 2009

THE TOPOCK REMEDIATION REVIEW is dedicated to enhancing stakeholder understanding of technical and regulatory information, encouraging participation in decision making forums, and fostering timely and effective project management and decisions for the Topock Compressor Station project final remedy.



Along with the Groundwater CMS/FS, progress is also being made in other key project areas:

Major Portions of Groundwater Investigation Complete, Groundwater Risk Evaluation Begins

Investigation and remedial activities at the Topock Site date to the 1980s. Historical discharges of wastewater from the Topock Compressor Station to Bat Cave Wash necessitated investigation of groundwater in the wash and surrounding area. To date, major portions of the groundwater investigation are complete. The results are documented in the RCRA Facility Investigation/Remedial Investigation (RFI/RI) Volume 2 Report. An addendum to the Report will include data collection from wells on the Arizona shore of the Colorado River and some data collected after October 2007. A draft of that addendum is scheduled to be submitted to DTSC and DOI in December 2008.

KEY INVESTIGATION REPORT MILESTONES

RFI/RI Volume 1

Site Background and History

- Approved by agencies – 2007

RFI/RI Volume 2

Results of Groundwater and Surface Water Investigation

- Submitted to agencies – July 2008
- Anticipate final – December 2008

Addendum to RFI/RI Volume 2

- Anticipate final – March 2009

In parallel to the investigation work, the Risk Assessment for groundwater has begun, and is anticipated to be complete in early 2009. The Risk Assessment will determine if chemicals detected in groundwater pose a threat to human health or ecological receptors.

Together, the RFI/RI and the Risk Assessment provide the basic information for the Groundwater Corrective Measures Study/Feasibility Study.

Supplemental Soil Investigation Begins

The RFI/RI Volume 1 identified a total of 20 Solid Waste Management Units (SWMUs), Areas of Concern (AOCs), and other undesignated areas for evaluation in the RFI/RI. In addition, nine previously closed SWMUs and AOCs were

identified for additional investigation. Most of the SWMUs and AOCs are located within the Station fenceline. Ten of the 29 areas are located outside the fenceline on PG&E and surrounding property.

Phase 1 of supplemental soil investigation activities at ten SWMUs, AOCs, and undesignated areas outside the Compressor Station fenceline was initiated in late August 2008. Soil data collected will be used, along with existing data, to evaluate potential human and ecological risk, and, if needed, to also evaluate potential cleanup alternatives for soil. The majority of the soil investigation activities are anticipated to be completed in 2010.

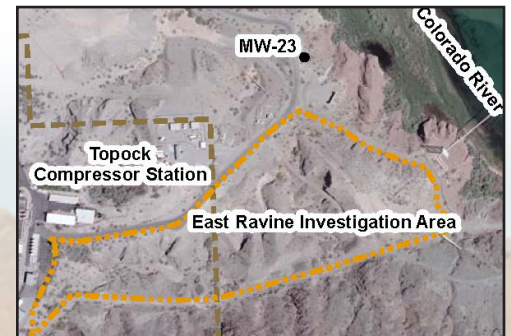


Soil Sampling with Direct Push Drill Rig

Approvals Sought for Implementation of East Ravine Groundwater Investigation

In 2007, DTSC directed PG&E to submit a work plan for conducting a groundwater investigation in the vicinity of the East Ravine (AOC-10), and nearby bedrock monitoring well MW-23. The goal of the investigation is to determine whether groundwater beneath the East Ravine area has been contaminated by chromium or other constituents.

A work plan to conduct the *East Ravine Groundwater Investigation* was approved in July 2008. PG&E is currently working to obtain approvals and permits, and field work is anticipated to begin in 4th quarter 2008.



Approximate Boundary of the East Ravine Investigation Area

2011

- Begin Construction of Groundwater (GW) Remedy

2010

- DTSC Certify EIR
- DTSC Approve Final GW Remedy
- Obtain Approvals for implementation of GW Remedy
- Start Phase 2 Soil Investigation

2009

- Complete East Ravine Investigation
- Complete RFI/RI Vol. 2 Addendum
- Complete GW Risk Assessment
- Complete GW CMS/FS
- Public Review of EIR, Statement of Basis, Proposed Plan
- DOI Issue GW ROD

2008

- Complete RFI/RI Vol. 2: GW
- Start GW CMS/FS
- Start EIR
- Start GW Risk Assessment
- Start Phase 1 Soil and East Ravine Investigations

QUESTIONS REGARDING THIS NEWSLETTER OR THE TOPOCK PROJECT SHOULD BE DIRECTED TO:

Aaron Yue

DTSC Project Manager
Phone: (714) 484-5439
Email: ayue@dtsc.ca.gov

Jeanne Matsumoto

DTSC Public Participation Specialist
Phone: (714) 484-5338
Email: jmatsumo@dtsc.ca.gov