

# **Appendix A**

## **Historical Aerial Photographs**

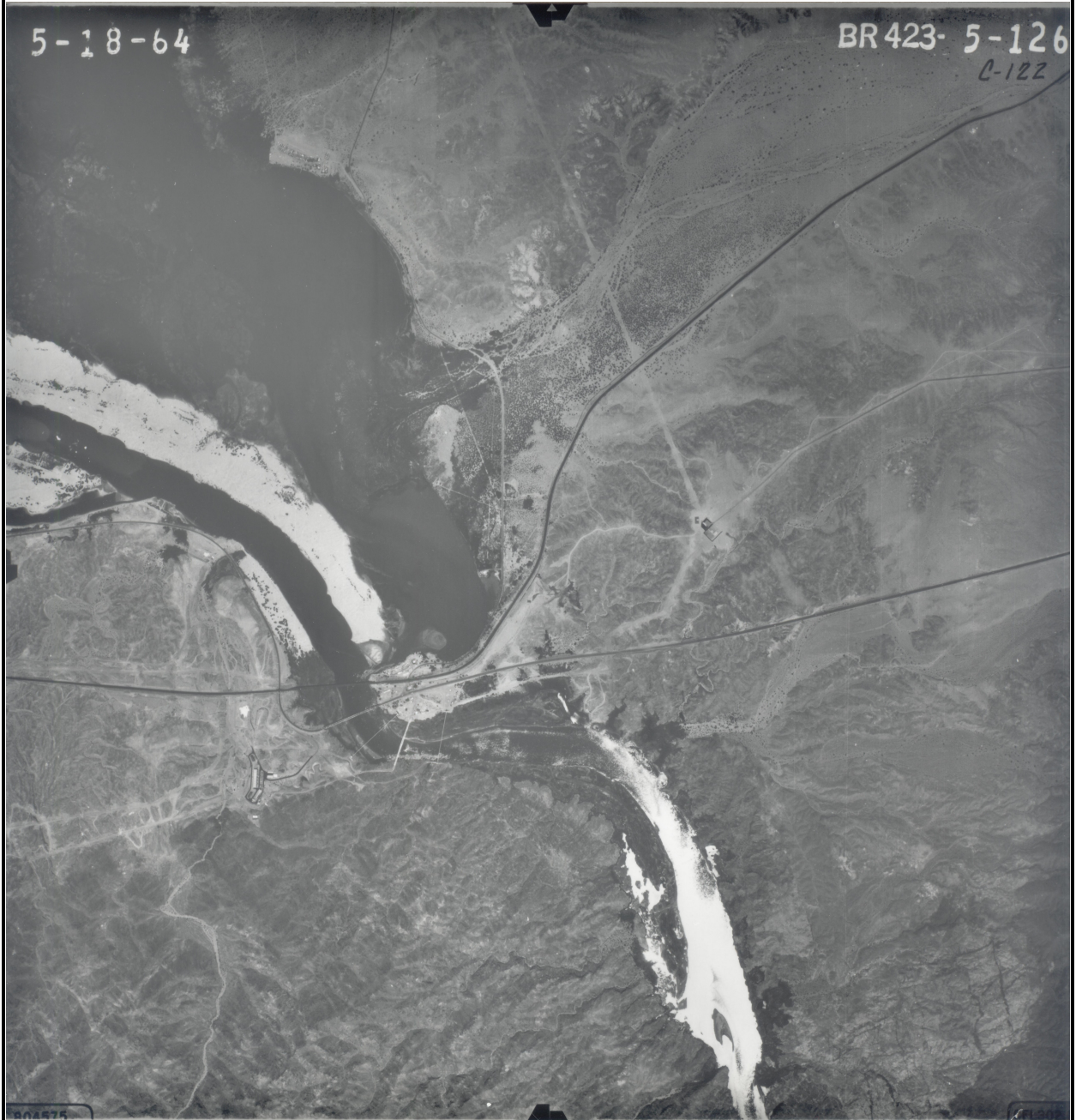
Part 2 of 2



Date: 07/24/62  
Flight/Frame(s): 62S 9892, 9893  
Source: NOAA National Geodetic Survey, SSMC#3  
Information Services Branch, N/NGS12\  
1315 East West Highway  
Silver Spring, MD 20910

**Figure A-10**  
**Aerial Photograph, July 24, 1962**  
RFI/RI Report, Volume 3 –  
Results of Soil and Sediment Investigation  
*PG&E Topock Compressor Station,  
Needles, California*





Date: 05/18/64  
Flight/Frame(s): BR 423-5-125, BR 432-5-126  
Source: US Bureau of Reclamation  
Lower Colorado Region  
P.O. Box 61470  
Boulder City, NV 89006-1470

**Figure A-11**  
**Aerial Photograph, May 18, 1964**  
RFI/RI Report, Volume 3 –  
Results of Soil and Sediment Investigation  
*PG&E Topock Compressor Station,*  
*Needles, California*



Date: 10/06/66  
Flight/Frame(s): 08-SBd 7-2, 7-3  
Source: California Department of Transportation  
1120 N Street  
Sacramento, CA 94273

**Figure A-12**  
**Aerial Photograph, October 6, 1966**  
RFI/RI Report, Volume 3 –  
Results of Soil and Sediment Investigation  
PG&E Topock Compressor Station, Needles, California

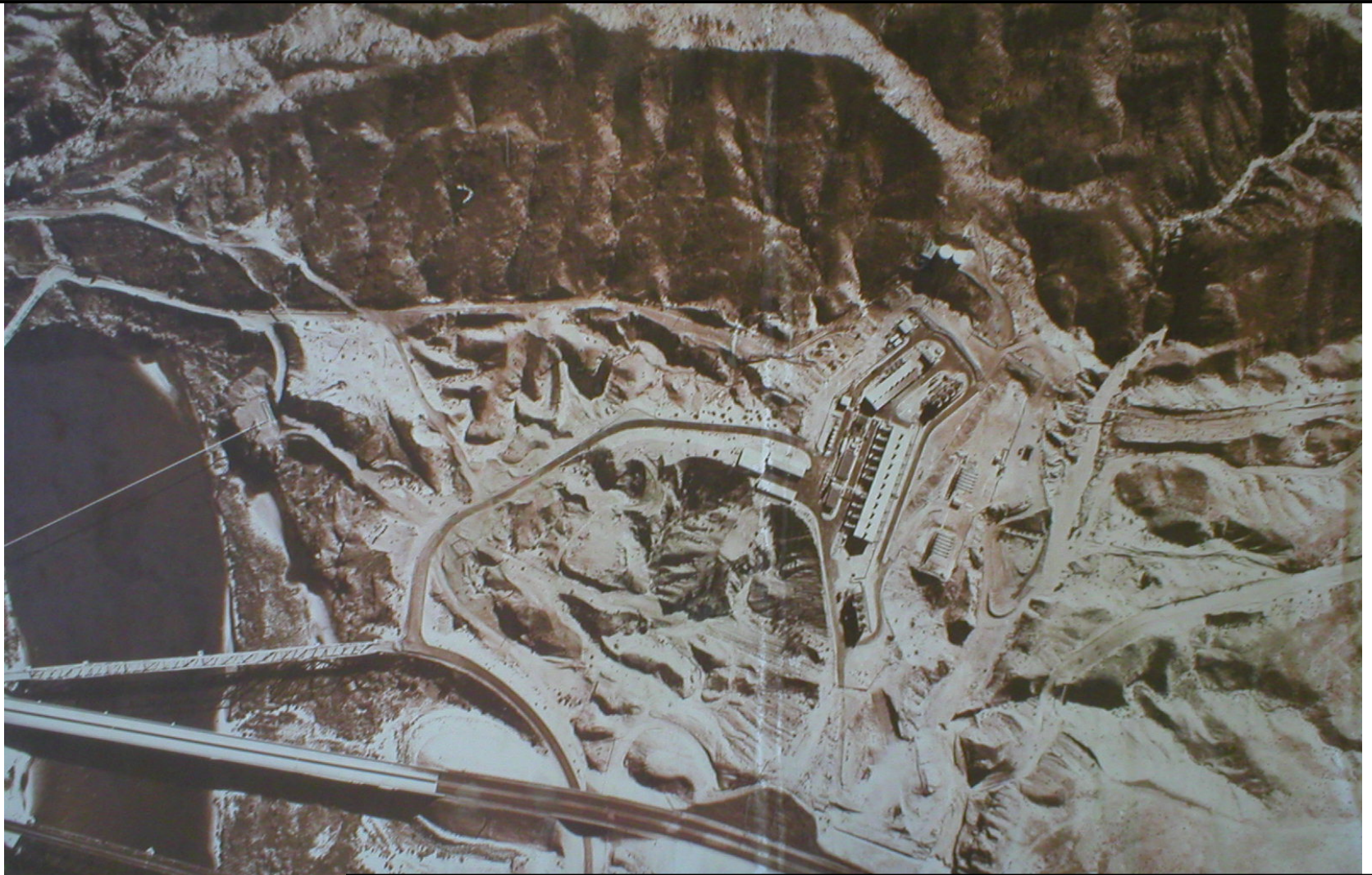




Date: 05/22/67  
Flight/Frame(s): BR 423-1-133  
Source: US Bureau of Reclamation  
Lower Colorado Region  
P.O. Box 61470  
Boulder City, NV 89006-1470

**Figure A-13**  
**Aerial Photograph, May 22, 1967**  
RFI/RI Report, Volume 3 –  
Results of Soil and Sediment Investigation  
*PG&E Topock Compressor Station,  
Needles, California*





Date: 06/01/67  
Flight/Frame(s): None  
Source: PG&E

**Figure A-14**  
**Aerial Photograph, June 1, 1967**  
RFI/RI Report, Volume 3 –  
Results of Soil and Sediment Investigation  
PG&E Topock Compressor Station, Needles, California

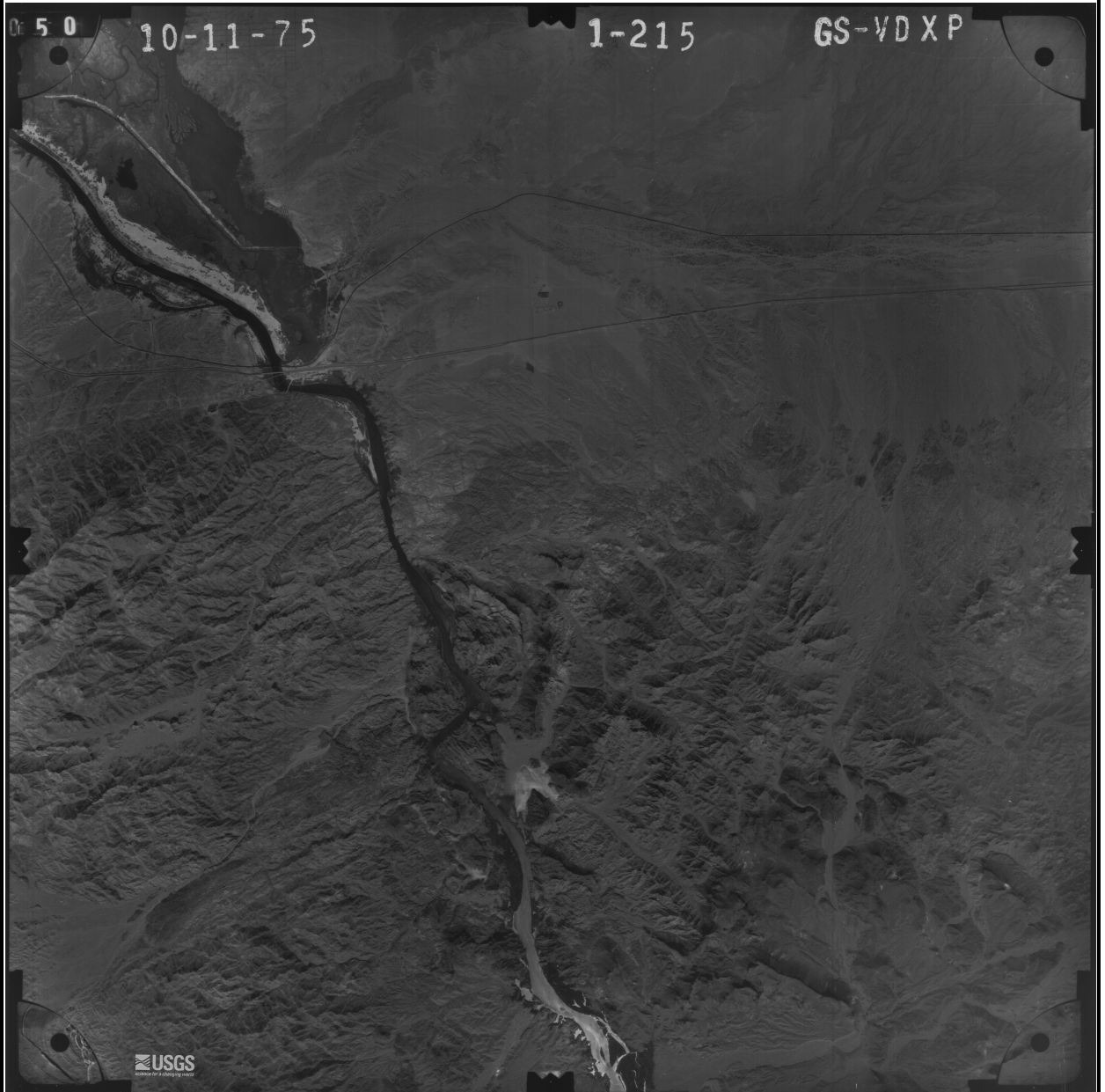




Date: 04/14/69  
Flight/Frame(s): GS-VCFL 1-160  
Source: USGS Rocky Mountain Mapping Center  
Earth Science Information Center  
Box 25046, Stop 504, DFC  
Denver, CO 80225

**Figure A-15**  
**Aerial Photograph, April 14, 1969**  
RFI/RI Report, Volume 3 –  
Results of Soil and Sediment Investigation  
PG&E Topock Compressor Station, Needles, California





Date: 10/11/75  
Flight/Frame(s): GS-VDXP 1-215  
Source: USGS Rocky Mountain Mapping Center  
Earth Science Information Center  
Box 25046, Stop 504, DFC  
Denver, CO 80225

**Figure A-16**  
**Aerial Photograph, October 11, 1975**  
RFI/RI Report, Volume 3 –  
Results of Soil and Sediment Investigation  
*PG&E Topock Compressor Station,  
Needles, California*





Date: 07/08/83  
Flight/Frame(s): 421 BR 212 303  
Source: US Bureau of Reclamation  
Lower Colorado Region  
P.O. Box 61470  
Boulder City, NV 89006-1470

**Figure A-17**  
**Aerial Photograph, July 8, 1983**  
RFI/RI Report, Volume 3 –  
Results of Soil and Sediment Investigation  
*PG&E Topock Compressor Station,  
Needles, California*





Date: 05/21/94  
Flight/Frame(s): N/A  
Source: TerryaServer/USGS

**Figure A-18**  
**Aerial Photograph, May 21, 1994**  
RFI/RI Report, Volume 3 –  
Results of Soil and Sediment Investigation  
PG&E Topock Compressor Station, Needles, California





Date: 11/02/97  
Flight/Frame(s): 97069-1. 2. 3  
Source: PG&E

**Figure A-19**  
**Aerial Photograph, November 2, 1997**  
RFI/RI Report, Volume 3 –  
Results of Soil and Sediment Investigation  
*PG&E Topock Compressor Station,*  
*Needles, California*





Date: 05/20/04  
Flight/Frame(s): N/A  
Source: PG&E

**Figure A-20**  
**Aerial Photograph, May 19, 2004**  
RFI/RI Report, Volume 3 –  
Results of Soil and Sediment Investigation  
PG&E Topock Compressor Station, Needles, California