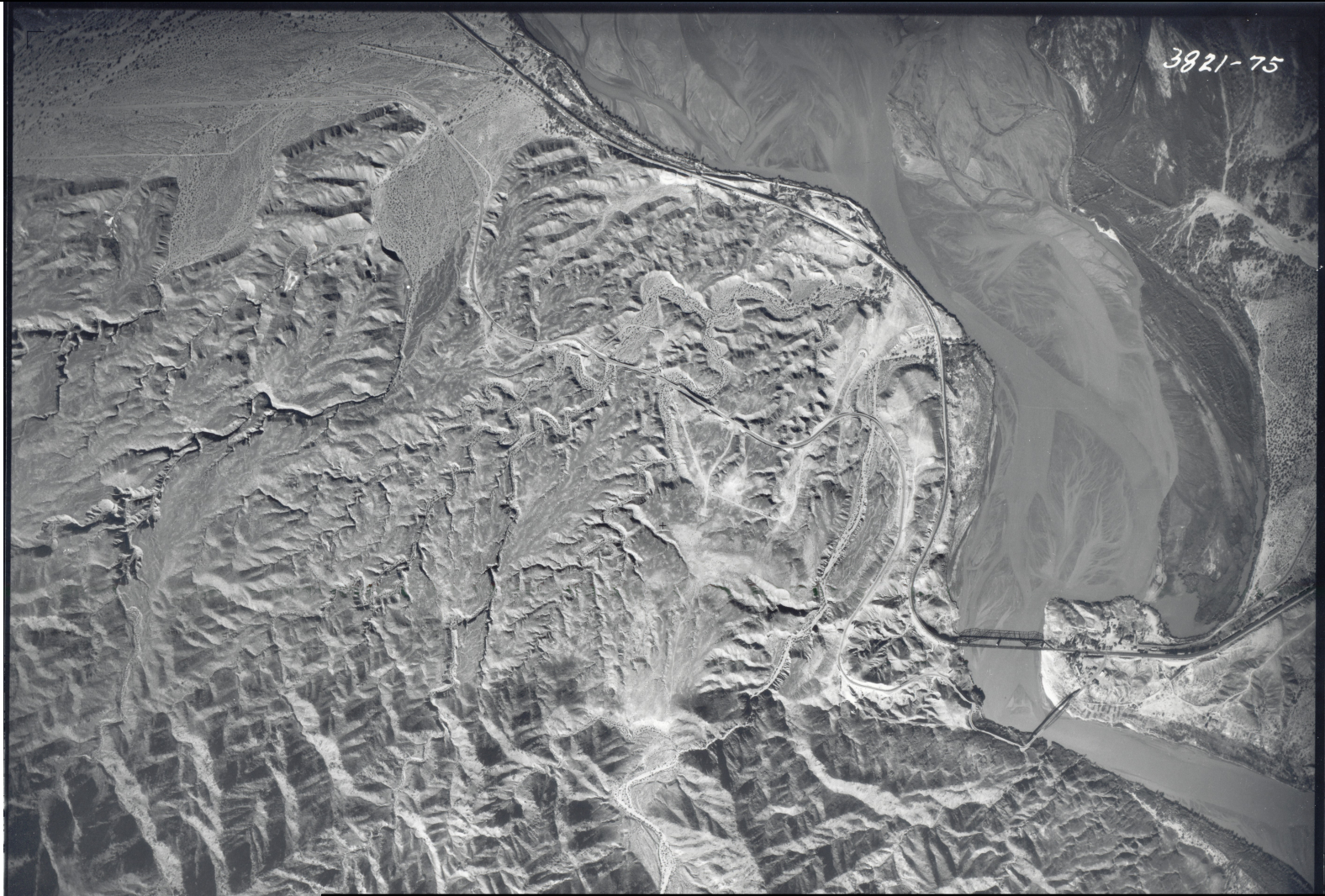


Appendix A

Historical Aerial Photographs

Part 1 of 2

3821-75



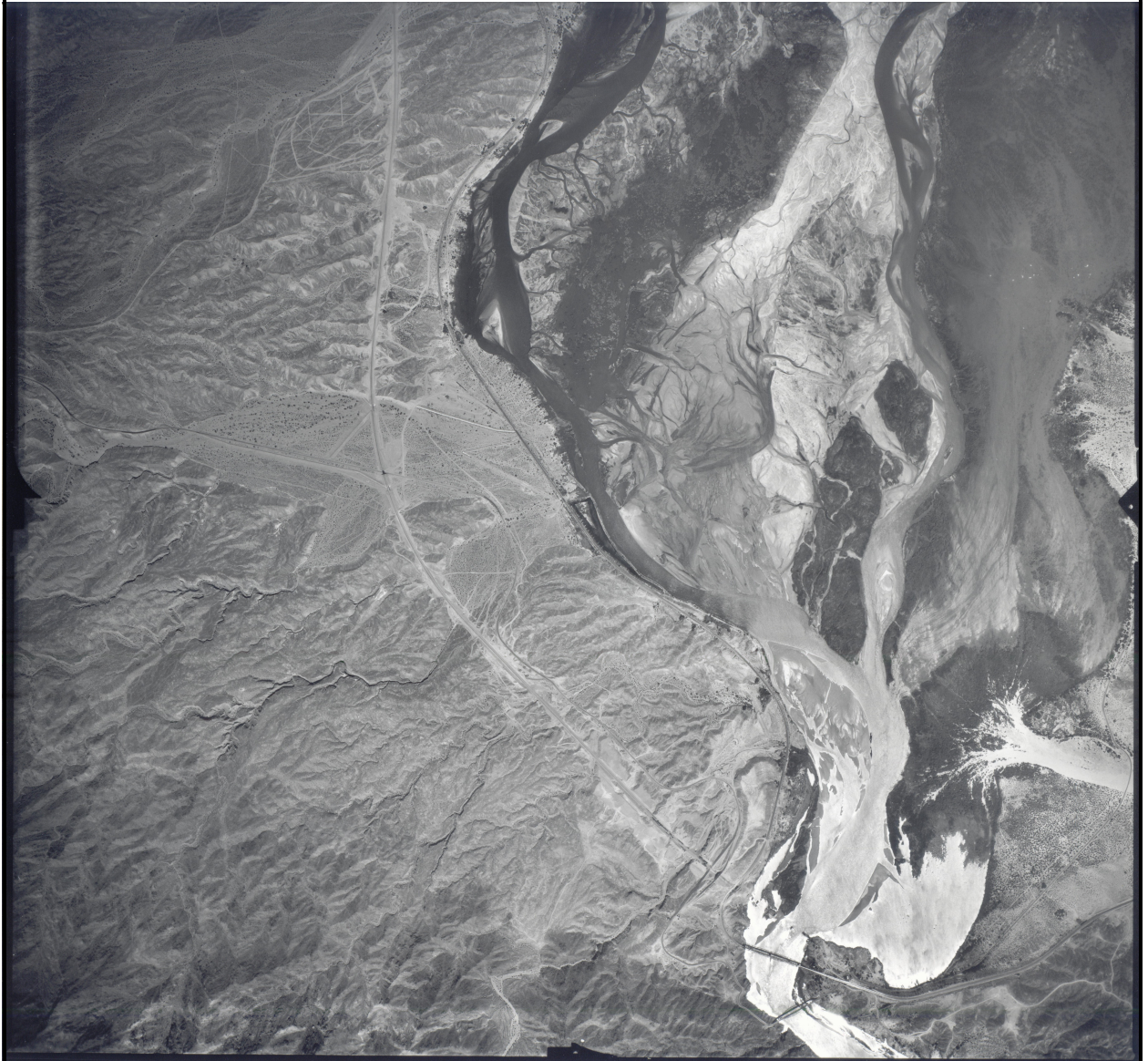
Date: 01/12/36
Flight/Frame(s): C-3821/75
Source: Fairchild Aerial Photography Collection
Whittier College
Whittier, CA 90608

Figure A-1
Aerial Photograph, January 12, 1936
RFI/RI Report, Volume 3 –
Results of Soil and Sediment Investigation
PG&E Topock Compressor Station, Needles, California



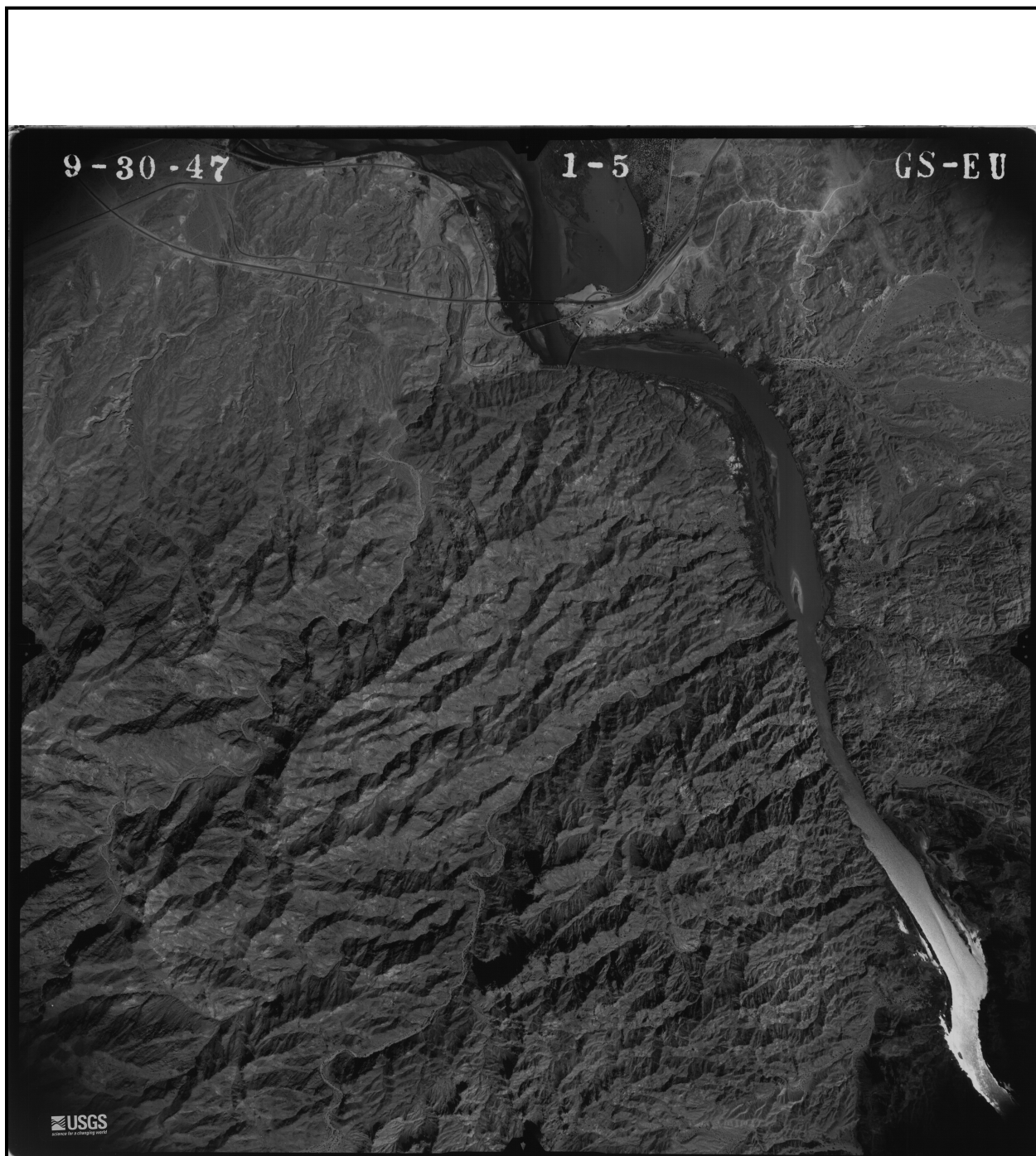
Date: 04/24/42
Flight/Frame(s): C-7800/4:113
Source: Fairchild Aerial Photography Collection
Whittier College
Whittier, CA 90608

Figure A-2
Aerial Photograph, April 24, 1942
RFI/RI Report, Volume 3 –
Results of Soil and Sediment Investigation
*PG&E Topock Compressor Station,
Needles, California*



Date: 05/11/44
Flight/Frame(s): C-8924/Section A:46
Source: Fairchild Aerial Photography Collection
Whittier College
Whittier, CA 90608

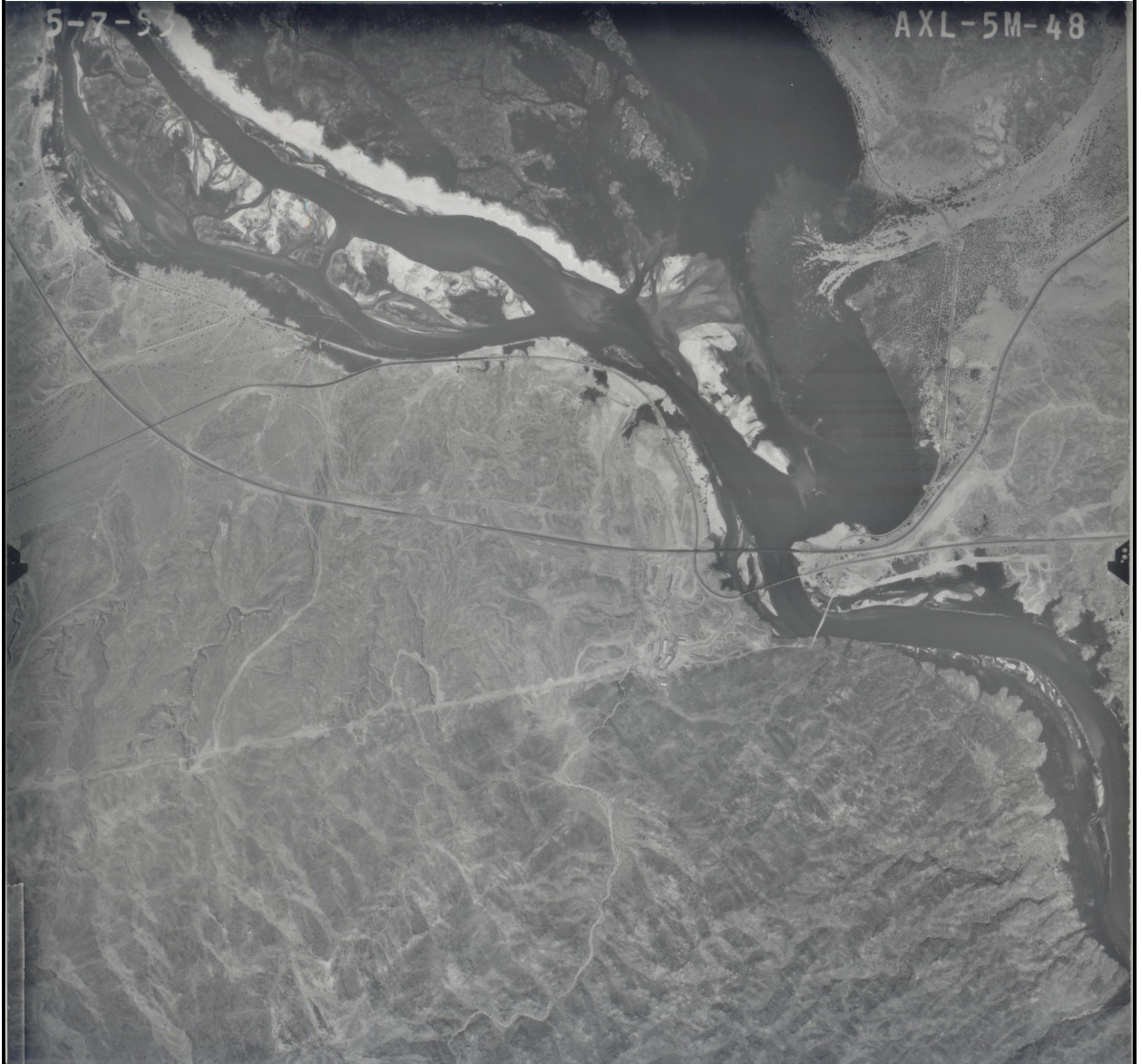
Figure A-3
Aerial Photograph, May 11, 1944
RFI/RI Report, Volume 3 –
Results of Soil and Sediment Investigation
*PG&E Topock Compressor Station,
Needles, California*



Date: 09/30/47
Flight/Frame(s): GS-EU 1-5
Source: USGS Rocky Mountain Mapping Center
Earth Science Information Center
Box 25046, Stop 504, DFC
Denver, CO 80225

Figure A-4
Aerial Photograph, September 30, 1947
RFI/RI Report, Volume 3 –
Results of Soil and Sediment Investigation
*PG&E Topock Compressor Station,
Needles, California*

JACOBS



Date: 05/07/53
Flight/Frame(s): AXL-5M-48, AXL-5M-49
Source: USDA photo via
County of San Bernardino Flood Control District
825 E. Third Street
San Bernardino, CA 92415-0835

Figure A-5
Aerial Photograph, May 7, 1953
RFI/RI Report, Volume 3 –
Results of Soil and Sediment Investigation
*PG&E Topock Compressor Station,
Needles, California*



Date: 05/24/55
Flight/Frame(s): 55W 8015, 8016
Source: NOAA National Geodetic Survey, SSMC#3
Information Services Branch, N/NGS12
1315 East West Highway
Silver Spring, MD 20910

Figure A-6
Aerial Photograph, May 24, 1955
RFI/RI Report, Volume 3 –
Results of Soil and Sediment Investigation
*PG&E Topock Compressor Station,
Needles, California*



Date: 05/19/55
Flight/Frame(s): N/A: Oblique View to northeast
Source: PG&E

Figure A-7
Aerial Photograph, May 19, 1955
RFI/RI Report, Volume 3 –
Results of Soil and Sediment Investigation
PG&E Topock Compressor Station, Needles, California



Date: 05/19/55
Flight/Frame(s): N/A: Oblique View to northwest
Source: PG&E

Figure A-8
Aerial Photograph, May 19, 1955
RFI/RI Report, Volume 3 –
Results of Soil and Sediment Investigation
PG&E Topock Compressor Station, Needles, California



Date: 11/04/61
Flight/Frame(s): 61S 7907
Source: NOAA National Geodetic Survey, SSMC#3
Information Services Branch, N/NGS12
1315 East West Highway
Silver Spring, MD 20910

Figure A-9
Aerial Photograph, November 04, 1961
RFI/RI Report, Volume 3 –
Results of Soil and Sediment Investigation
*PG&E Topock Compressor Station,
Needles, California*