



Scott Graunke
Topock Site Project Manager
Environmental Remediation

Topock Compressor Station
145453 National Trails Hwy
Needles, CA 92363

Mailing Address
P.O. Box 337
Needles, CA 92363

442.214.5911
Email: sigx@pge.com

August 10, 2025

Ms. Veronica Dickerson, RSO
Environmental Compliance and Cleanup Division
Office of Environmental Policy and Compliance (OEPC)
US Department of Interior

Mr. Christopher Ioan
California Department of Toxic Substances Control
5796 Corporate Avenue
Cypress, CA 90630

Subject: July 2025 Monthly Progress Report for the Final Groundwater Remedy Construction and Startup, PG&E Topock Compressor Station, Needles, California
(Document ID: TPK_Monthly_Progress_Rpt_July_2025_20250810)

Dear Ms. Dickerson and Mr. Ioan:

In compliance with the *1996 Corrective Action Consent Agreement* (Attachment 6, Part E, Section 9a and Attachment 7) and the *2013 Remedial Design/Remedial Action Consent Decree* (Paragraph 32 and Appendix C, Section 5), and pursuant to the *Construction/Remedial Action Work Plan (C/RAWP)* (Section 2.6.3.1), this monthly report describes activities taken at Pacific Gas and Electric Company's (PG&E's) Topock Compressor Station in July 2025, as well as activities planned for the next six weeks (August 3 to September 13, 2025), and presents available results from sampling and testing, if any, performed in the reporting period.

This report also discusses material deviations from the approved design documents and/or the C/RAWP, if any, that PG&E has proposed to the California Department of Toxic Substances Control (DTSC) and U.S. Department of the Interior (DOI), or that have been approved by DTSC and DOI. This report highlights key personnel changes, if any, and summarizes activities performed and activities planned in support of DOI's 2012 Community Involvement Plan and DTSC's 2019 Community Outreach Plan, as well as contacts with the local community, representatives of the press, and/or public interest groups, if any. This report also includes data from samples collected as part of the sitewide groundwater monitoring program within 60 days of sample collection, as required by the Condition of Approval # xi in DTSC's approval letter dated August 24, 2018.

Please note that since activities conducted to comply with the project's Applicable or Relevant and Appropriate Requirement and the Subsequent Environmental Impact Report mitigation measures are currently reported in separate compliance reports, this information is not repeated in the monthly reports. Monthly progress reports will be submitted to DTSC and DOI by the 10th day of the following month during construction and startup of the groundwater remedy at the Topock Compressor Station which officially began on October 2, 2018. This is the 82nd monthly progress report. Please contact me at (442) 214-5911 if you have any questions or comments regarding this submittal.

Sincerely,

A handwritten signature in black ink that reads 'Scott Graunke'.

Scott Graunke
Topock Site Project Manager

Topock Project Executive Abstract

<p>Document Title: <i>July 2025 Monthly Progress Report for the Groundwater Remedy Construction and Startup, PG&E Topock Compressor Station, Needles, California</i></p> <p>Submitting Agency: DOI, DTSC</p> <p>Final Document? <input checked="" type="checkbox"/> Yes <input type="checkbox"/> No</p>	<p>Date of Document: 08/10/2025</p> <p>Who Created this Document? (i.e. PG&E, DTSC, DOI, Other) PG&E</p>
<p>Priority Status: <input type="checkbox"/> HIGH <input type="checkbox"/> MED <input checked="" type="checkbox"/> LOW</p>	<p>Is this time critical? <input type="checkbox"/> Yes <input checked="" type="checkbox"/> No</p>
<p>Type of Document:</p> <p><input type="checkbox"/> Draft <input checked="" type="checkbox"/> Report <input type="checkbox"/> Letter <input type="checkbox"/> Memo</p> <p><input type="checkbox"/> Other / Explain:</p>	<p>Action Required:</p> <p><input checked="" type="checkbox"/> Information Only <input type="checkbox"/> Review and Input</p> <p><input type="checkbox"/> Other / Explain:</p>
<p>What does this information pertain to?</p> <p><input type="checkbox"/> Resource Conservation and Recovery Act (RCRA) Facility Assessment (RFA)/Preliminary Assessment (PA)</p> <p><input type="checkbox"/> RCRA Facility Investigation (RFI)/Remedial Investigation (including Risk Assessment)</p> <p><input type="checkbox"/> Corrective Measures Study (CMS)/Feasibility Study (FS)</p> <p><input checked="" type="checkbox"/> Corrective Measures Implementation/Remedial Action (RA)</p> <p><input type="checkbox"/> California Environmental Quality Act/ Environmental Impact Report (EIR)</p> <p><input type="checkbox"/> Interim Measures</p> <p><input type="checkbox"/> Other / Explain:</p>	<p>Is this a Regulatory Requirement?</p> <p><input checked="" type="checkbox"/> Yes</p> <p><input type="checkbox"/> No</p> <p>If no, why is the document needed?</p>
<p>What is the consequence of NOT doing this item? What is the consequence of DOING this item?</p> <p>The consequence for not doing this item is PG&E will be out of compliance with the 1996 Corrective Action Consent Agreement (CACA) and the 2013 Remedial Design/ Remedial Action Consent Decree (CD), as well as the Construction/Remedial Action Work Plan (C/RAWP).</p>	<p>Other Justification/s:</p> <p><input type="checkbox"/> Permit <input type="checkbox"/> Other / Explain:</p>
<p>Brief Summary of attached document:</p> <p>This monthly report describes activities taken in July 2025 as well as activities planned for the next six weeks (August 3 to September 13, 2025) and presents available results from sampling and testing in the reporting period. In addition, this report discusses material deviations from the approved design documents and/or the <i>Construction/ Remedial Action Work Plan</i> (C/RAWP), if any, that PG&E has proposed to the California Department of Toxic Substances Control (DTSC) and the U.S. Department of the Interior (DOI) or that have been approved by DTSC and DOI. This report also highlights key personnel changes, if any, and summarizes activities performed and activities planned at the Topock Compressor Station in support of DOI's 2012 Community Involvement Plan and DTSC's 2019 Community Outreach Plan, as well as contacts with local community, representatives of the press, and/or public interest groups, if any.</p> <p>Written by: Pacific Gas and Electric Company</p>	
<p>Recommendations:</p> <p>Provide input to PG&E.</p>	
<p>How is this information related to the Final Remedy or Regulatory Requirements:</p> <p>This submittal is required in compliance with the CACA, CD, and pursuant to the C/RAWP.</p>	
<p>Other requirements of this information?</p> <p>None.</p>	



July 2025
Monthly Progress Report for the
Final Groundwater Remedy Construction and Startup

PG&E Topock Compressor Station
Needles, California

Document ID: TPK_Monthly_Progress_Rpt_July_20250810

August 2025

Prepared for
U.S. Department of the Interior and California Department of Toxic Substances Control

On Behalf of
Pacific Gas and Electric Company



Contents¹

Topock Project Executive Abstract	iii
Acronyms and Abbreviations	ix
1. Introduction	1
2. Monthly Update	2
2.1 Work Completed	2
2.2 Freshwater Usage, Waste Generation, and Management	4
2.2.1 Freshwater and Wastewater	4
2.2.2 Displaced Materials/Soils/Clay	5
2.2.3 General Construction Waste, Sanitary Waste, and Recyclables	5
2.3 Worker Training and Education	5
2.4 Status of Work Variance Requests*	5
2.5 Use of Future Activity Allowance*	5
2.6 Issues Encountered and Actions Taken to Rectify Issues/Problems	5
2.7 Key Personnel Changes*	6
2.8 Communication with the Public*	6
2.9 Planned Activities for Next Six Weeks	6
2.10 Construction Schedule Review	7
2.11 Available Sitewide Groundwater Monitoring Data (DTSC Condition of Approval xi)	7
2.12 IM-3 Shutdown and Preparation for Layup*	7
2.13 Summary of Releases Occurred During Groundwater Remedy Construction	7
3. References	7

Tables

- 2-1a. Summary of Non-Well Environmental Release-To-Constructions
- 2-1b. Summary of Well Environmental Release-To-Constructions
- 2-1c. Summary of Environmental Release-To-Operate*
- 2-2. Monitoring Wells Nomenclature Changes
- 2-3. Summary of Work Variance Requests*
- 2-4. Summary of Cumulative Percent Completeness of Key Phase 2b Construction Activities
- 2-5. Summary of Releases Occurred During Groundwater Remedy Construction

Figures

- 2-1 Construction Site Plan and Access Routes
- 2-2 Phase 2b Well Locations

Attachments

- A Photographs
- B Available Boring and Well Construction Logs, Groundwater Sample Results from Well Drilling, and Well Testing Activities*
- C Soil Sampling Locations and Available Soil Analytical Results
- D Perimeter Air Sampling Analytical Results*
- E Noise Monitoring Results (SEIR NOISE-2 and NOISE-3 Requirement)
- F Six-Week Look-Ahead Schedule
- G Groundwater Monitoring Data (DTSC Condition of Approval xi)

¹ Sections/Tables/Attachments denoted with * have no changes since last reporting period. They will not appear in the body of the report. This abbreviated reporting format has been implemented since the March 2024 Monthly Progress Report.

Acronyms and Abbreviations

Acronym	Definition
AOC	area of concern
CACA	Corrective Action Consent Agreement
C/RAWP	Construction/Remedial Action Work Plan
CD	Consent Decree
DOI	United States Department of the Interior
DTSC	California Department of Toxic Substances Control
ERTC	Environmental Release to Construct
IM-3	Interim Measure No. 3
IRZ	in-situ reactive zone
O&M	operations and maintenance
PG&E	Pacific Gas and Electric Company
RCRA	Resource Conservation and Recovery Act
SEIR	Subsequent Environmental Impact Report
TCS	Topock Compressor Station

1. Introduction

Pacific Gas and Electric Company (PG&E) is implementing the final groundwater remedy to address chromium in groundwater near the PG&E Topock Compressor Station (TCS), located in eastern San Bernardino County 15 miles southeast of the city of Needles, California. The U.S. Department of the Interior (DOI) is the lead federal agency overseeing remedial actions at the TCS. PG&E and the United States executed a Remedial Design/Remedial Action Consent Decree (CD), on behalf of the DOI, under the Comprehensive Environmental Response, Compensation, and Liability Act in 2012, which was approved by the U.S. District Court for the Central District of California in November 2013 (DOI, 2013). Paragraph 32 and Appendix C (Section 5) of the CD requires PG&E to submit to DOI monthly electronic progress reports during construction of the remedial action, and to submit progress reports on a quarterly basis after the selected remedy has been implemented and demonstrated to be operating as intended.

The California Department of Toxic Substances Control (DTSC) is the lead state agency overseeing corrective actions at the TCS. Remedial activities are being performed in conformance with the requirements of the Resource Conservation and Recovery Act Corrective Action pursuant to a Corrective Action Consent Agreement (CACA) entered into by PG&E and the DTSC in February 1996 (DTSC, 1996). Attachment 6, Part E, Section 9a and Attachment 7 of the CACA require PG&E to provide certain information in monthly progress reports during construction of the corrective action.

In compliance with the CACA and CD requirements, PG&E proposed a template for the monthly progress reports in Exhibit 2.6-2 of the Construction/Remedial Action Work Plan (C/RAWP) (CH2M, 2015b). The C/RAWP was approved by DOI on April 3, 2018 (DOI, 2018) and DTSC on April 24, 2018 (DTSC, 2018a).

This is the 82nd of the monthly progress reports that will be submitted to DOI and DTSC for the duration of the remedy construction and startup. This monthly progress report documents activities during July 2025 and follows the content and format described in Exhibit 2.6-2 of the approved C/RAWP. The report is organized as follows:

- Sections 2.1 through 2.7 describe completed construction activities; data collected, generated or received; nature and volume of waste generated; waste handling/disposal; issues encountered; actions taken to rectify problems/issues; personnel changes; and Work Variance Requests (i.e., material deviations from the design documents, the C/RAWP, or other approved work plans), if any, as well as agencies' actions on those requests, and potential schedule impacts.
- Sections 2.8 through 2.9 summarize key project personnel changes, if any, contacts with representatives of the press, local community, or public interest groups during the reporting period, other activities provided to assist DTSC and/or DOI in support of the Community Outreach Plan (DTSC, 2019) and/or Community Involvement Plan (DOI, 2012), respectively, and anticipated near-term (approximately next six weeks) activities in support of the Community Outreach and Community Involvement Plans.
- Section 2.10 provides information relating to the construction schedule progress, sequencing of activities, information regarding percentage of completion, unresolved delays encountered or anticipated that may affect the future schedule, and a description of efforts made to mitigate those delays or anticipated delays, if any.
- Section 2.11 presents validated data from samples collected as part of the sitewide groundwater monitoring program within 60 days of sample collection, as required by the Condition of Approval # xi in DTSC's approval letter dated August 24, 2018 (DTSC, 2018a).
- Section 3 lists the references cited in this report.

Note that Sections/Tables/Attachments that have no changes since last reporting period, will not appear in the body of the report. This abbreviated reporting format has been implemented since with the March 2024 Monthly Progress Report.

Please note that since activities conducted to comply with the project's Applicable or Relevant and Appropriate Requirement and the Subsequent Environmental Impact Report (SEIR) (DTSC, 2018b) mitigation measures are currently reported in separate compliance reports, the same information is not repeated in the monthly reports.

2. Monthly Update

2.1 Work Completed

In July 2025, PG&E performed the following construction activities (note that Figures 2-1 and 2-2 show the construction access routes/staging areas and Phase 2b wells, respectively, and Table 2-2 presents the changes in well nomenclature):

- **Attachment A** includes select photos of activities during this reporting period. There is no update to **Attachment B** (Available Boring and Well Construction Logs, Groundwater Sample Results from Well Drilling, and Well Testing Activities) to report this month,
- On July 13, 2018, PG&E sent via email the first weekly six-week look-ahead schedule for the remedy construction field work. The weekly emails provide highlights of field activities in the previous week, field activities scheduled for the next week, and planned activities for the next six weeks. Recipients of the weekly emails are DOI, DTSC, the U.S. Fish and Wildlife Service, the California Regional Water Quality Control Board, Colorado River Basin Region, the Metropolitan Water District of Southern California, Tribes, and the Technical Review Committee. PG&E continues to send these weekly emails to date. As of July 31, 2025, a total of 364 six-week look-ahead schedule emails have been sent. Of those, four six-week look-ahead schedule emails were sent in July 2025 (on July 7, 14, 22, and 27).
- On August 10, 2018, PG&E issued the first Environmental Release to Construct (ERTC) to contractors. As of July 31, 2025, a total of 120 ERTCs (including addenda) and 10 Environmental Release to Operate (ERTOs, including addenda) were issued for construction and operation activities. The ERTCs are listed in Tables 2-1a and 2-1b. The ERTOs are listed in Table 2-1c.
 - A new ERTC #24 was issued on July 2, 2025 for the installation of Pipeline C Segment 18 (called C18) and an aggregate-based access road in East Ravine. This ERTC replaces a prior ERTC #24 issued in May 2025 for a portion of C18 from Station 0+00 to Station 3+00.
 - Addendum 1 to ERTC #24 was issued on July 28, 2025 to expand the allowed work area in a tight area within the East Ravine.
 - A new ERTC #5bc was issued on July 31, 2025 for access road construction, well site preparation, well drilling/installation/testing at MW-JJ in north floodplain.

No new ERTO was issued in July 2025.

- Starting on October 4, 2018, PG&E has published a daily construction activities list and discussed the list at the morning tailboards with Tribes and agency representatives. This daily list is intended to inform and facilitate observation by Tribes and agency representatives on site on that day. PG&E continues to publish these daily lists and discuss the list at the daily morning tailboards to date. Eighteen daily activity lists were issued in July 2025.
- In July 2025, the following remedy construction and O&M activities were scheduled:
 - June 29 to July 5 activities:
 - Continued IRZ circulation and ethanol injection O&M activities, including reveg and O&M support activities. Example O&M activities include:
 - Process monitoring -- Inspect wells and system areas, adjust operational parameters including extraction and injection well flowrates and ethanol dosing concentrations;

- Well and system maintenance – Backwash injection wells, chemical and physical rehabilitation of IRZ wells, operate water conditioning system, perform routine preventative maintenance; and
- General system/site inspection – inspection of access roads and monthly inspection of industrial SWPPP best management practices.
- IRL-4 drilling site and road preparation.
- MW-100 drilling.
- IRZ-9 pump test.
- July 6 to 12 activities:
 - Continued IRZ circulation and ethanol injection O&M activities, including reveg and O&M support activities. See example O&M activities in the first bullet above.
 - IRL-4 drilling site and road preparation.
 - MW-100 drilling.
 - Site surveying.
 - IRZ-9 pump test.
 - Air knifing MW-AA/102, MW-J, MW-BB, and MW-CC.
 - C-18 pre-work field review.
- July 13 to 20 activities:
 - Continued IRZ circulation and ethanol injection O&M activities, including reveg and O&M support activities. See example O&M activities in the first bullet above.
 - Continued MW-BB drilling site and road preparation.
 - Completed air knifing at MW-BB, MW-CC, MW-J.
 - Continued MW-100 site cleanup and demobilization.
 - Completed IRZ pump test and demobilized
 - Began C-18 pipeline installation.
 - Began MW-AA/102 mobilization, site setup, and drilling.
 - Continued reveg monitoring and weeding.
 - Continued monthly groundwater sampling at various locations.
 - Completed removal and transplant of beavertail cactus.
- July 20 to 26 activities:
 - Continued IRZ circulation and ethanol injection O&M activities, including reveg and O&M support activities. See example O&M activities in the first bullet above.
 - Continued MWAA site setup and drilling
 - Continued MW-BB drilling site preparation
 - Continued C18 Pipeline Installation
- Remedy Baseline/Opportunistic Soil Sampling:

Pursuant to the Baseline Soil Sampling and Analysis Plan (Appendix A of the Soil Management Plan [SMP] [which is Appendix L of the C/RAWP]), baseline soil samples were collected at MW-AA Shallow (MW-AS)/MW-AA Deep (MW-AD) on July 12, 2025, MW-J Shallow (MW-JS)/MW-J

Deep (MW-JD) on July 13, 2025, MW-BB Shallow (MW-BBS)/MW-BB Deep (MW-BBD) on July 14, 2025, and MW-CC Shallow (MW-CCS)/MW-CC Deep (MW-CCD) on July 15, 2025.

See **Attachment C** for information about soil sampling locations and soil analytical results that are available at this time.

– Fugitive Dust Monitoring:

- Thirty two observations for fugitive dust were made during periodic inspection of construction activities. With the exception of occasional fugitive dust observed from construction traffic on IM3 access road, no visible dust was observed outside of the work areas. Application of water on access road and work areas is effective in controlling fugitive dust.
- Two each of the Aeroquals continuous dust monitors are located at the SPY and in the East Ravine. On July 23, 2025, one temporary exceedance of the 100 micrograms per cubic meter ($\mu\text{g}/\text{m}^3$) alarm occurred at one of the Aeroquals in the East Ravine. This exceedance was caused by construction traffic exiting the work area at the end of the day. On July 25, 2025, one temporary exceedance of the 100 $\mu\text{g}/\text{m}^3$ alarm occurred after work hours at one of the Aeroquals in the SPY. This exceedance appears to be caused by a wind gust.

There is no update to **Attachment D** (Perimeter Air Sampling Analytical Results) to report this month.

– Noise Monitoring (the following are highlights; details are in **Attachment E**):

- Sixteen events at the pre-approved location west of the mobile home park at Moabi Regional Park. Construction activities closest to this monitoring location include soil management activities at the SPY and Construction Headquarters (CHQ), as well as traffic on NTH. The sound level typically varied between 42 and 62 dBA, with an average and median of 51-52 dBA.
- One event at the pre-approved location near the UHR-1 mitigation planting area. In July 2025, construction-related activity closest to this monitoring location is primarily construction traffic on National Trails Highway. The sound level collected during the event is 57 dbA. Since noise from construction traffic is already monitored at the Park Moabi location, noise monitoring at this location was temporarily ceased in July and will re-start in August.
- Fifteen events at the pre-approved location near and at the same elevation as Maze C. Construction activities closest to this monitoring location are associated with drilling at MW-100 (former MW-I) and MW-102 (former MW-AA). The sound level typically varied between 47 and 65 dBA, with an average and median of 55-56 dBA.

Due to close proximity of MW-100 and MW-102 to this pre-approved monitoring location, sound curtain was erected during drilling at both locations.

2.2 Freshwater Usage, Waste Generation, and Management

In July 2025, freshwater usage, waste generation, and management are as follows:

2.2.1 Freshwater and Wastewater

- In July 2025, an approximate total of 1,800 gallons of freshwater was used for IRZ wells rehabilitation, 359 gallons was used for O&M activities in the revegetation areas, 103,500 gallons for well drilling and drilling support, and 468,000 gallons was used for dust control during remedy construction.
- For the reporting period, an estimated 67,320 gallons of remedy-produce water (after conditioning) was re-injected into the aquifer. Prior to reinjection, the conditioned water is sampled in accordance with the approved sampling plan in the O&M Plan. Analytical data for remedy-produced water is included in Attachment G. To date, there has been no offsite disposal, or disposal to the PG&E TCS evaporation ponds, of remedy-produced water generated from O&M activities.

2.2.2 Displaced Materials/Soils/Clay/Sludge

- Since the start of Phase 2b remedy construction in late March 2025, an approximate 3,426 cubic yards of excess soils/materials (excluding spills/releases) were generated from construction activities. Of those, in July 2025 about 100 cubic yards were generated from excavation in the East Ravine for Pipeline C18 installation, and 7 cubic yards were generated from well drilling. The excavated material from East Ravine (C18) was transported to the Soil Processing Yard, stockpiled in two separate piles (one for soil from PG&E property and one for soil from the Refuge), and will be managed in accordance with the Remedy Soil Management Plan.
- Approximately 5 gallons of sludge (67 pounds) was generated from IRZ well rehabilitation in June 2025. The sludge was characterized as non-RCRA hazardous waste due to chromium and will be transported offsite in the August milk run for disposal at a permitted landfill.

2.2.3 General Construction Waste, Sanitary Waste, and Recyclables

- In July 2025, approximately 3.8 cubic yards of general waste was generated and hauled to local landfills. No spent filters were generated from the bag filter at well PTI-1D.
- Sanitary waste from construction trailers/portable toilets is hauled offsite as needed.

2.3 Worker Training and Education

- In July 2025, nine safety training sessions were held and a total of fourteen personnel trained. In addition, thirteen personnel took the WEAT.

2.4 Status of Work Variance Requests

- On May 22, 2025, PG&E submitted to DTSC and DOI the proposed Work Variance Request (WVR) #15 to modify the IRL-4 access road for dual rotary rig access and incorporation of a pre-cast concrete retaining wall for better protection against stormwater erosion. DTSC forwarded the draft WVR to Tribes and stakeholders on the same day and requested input, if any, by June 27, 2025. A site walk was conducted on June 16, 2025 to discuss the WVR and view the proposed retaining wall location. The WVR was also discussed at the June 18, 2025 Consultative Work Group (CWG) and Technical Work Group (TWG) meetings.

The Chemehuevi Indian Tribe, Fort Yuma Quechan Tribe, and Cocopah Indian Tribe provided comments on June 27, 2025. The Fort Mojave Indian Tribe provided comments under Section 106 consultation. DTSC provided comments on July 25, 2025, and directed PG&E to respond to comments received in a Response to Comments table within 30 calendar days.

No changes to Table 2-3 Summary of Work Variance Requests to report this month.

2.5 Use of Future Activity Allowance*

No changes to report this month.

2.6 Issues Encountered and Actions Taken to Rectify Issues/Problems

The following key issues were encountered and are being resolved:

- During the April 3, 2025 pre-work field review for the remaining upland wells, the FMIT raised a concern about the location of well MW-DD and its planned work area, and requested a discussion with the agencies prior to drilling of this well. BLM, DOI, DTSC, and BOR met with Tribes on April 29, 2025. Agencies met with PG&E on May 1 to discuss alternative locations for MW-DD. DTSC requested a written explanation as to why arsenic monitoring wells MW-DD and MW-EE cannot be placed in the vicinity of the IM-3 access road. PG&E provided a response on May 29, 2025.

A site walk was conducted on June 16, 2025 to view and discuss the alternate location of MW-DD on the IM3 access road. Alternate locations for MW-DD were also discussed at the June 18, 2025 TWG meeting. On July 7, 2025, DTSC directed PG&E to prepare figures illustrating the footprint/work area boundaries for both well MW-DD as proposed in the 2015 BOD as well as the MW-DD location in the IM3 access road that was walked and observed on June 16, 2025. PG&E provided a response on July 29, 2025.

The following key issue was identified and was resolved:

- PG&E O&M continued work near Node 4 (within the buffer) by parking at the gate and walking in, as was done in 2022 with a similar nest in the same tree. A biologist monitored all O&M activities and work was paused if signs of nest agitation were observed. The last work inside the buffer occurred on July 11. The female was seen on the nest through July 14, but not at all on July 15. On July 17, a GoPro inspection revealed three unhatched eggs and no adults in the area. On July 22, 2025, PG&E Biologist notified DTSC and DOI of the nest failure and stated: *"It appears that high temperatures may have contributed to the nest failure. There doesn't appear to be a direct correlation between the work being performed and the female abandoning the nest"*.
- A Lesser Nighthawk nest was first observed on June 26, 2025, on the ground in the UHR-1 revegetation area. The nest is in a nearby location from the previous lesser nighthawk nest from last month. A survey identified two eggs. A buffer of 60 feet was established to protect the parents from flushing off the nest. On July 17, monitoring confirmed one egg hatched while the second egg remained unhatched. Therefore, this nest was partially successful.

2.7 Key Personnel Changes*

No changes to report this month.

2.8 Communication with the Public*

No changes to report this month.

2.9 Planned Activities for Next Six Weeks

The planned activities for next six weeks (August 3 to September 13, 2025) include the following:

- Continue IRZ O&M including revegetation and maintenance of revegetation area.
- Continue groundwater and river sampling.
- Continue Pipeline C18 installation.
- Continue site preparation at MW-FF and MW-GG.
- Complete drilling at MW-102 (former MW-AA).
- Start drilling at MW-101 (former MW-P) and MW-103 (former MW-BB), and FW-01.
- Conduct Pre-Work Field Review for MW-JJ in the floodplain on August 7, 2025.
- Start site preparation for MW-J, MW-DD, and MW-JJ.
- Construct access road to MW-JJ.
- Continue to conduct inspection of Stormwater Pollution Prevention Plan best management practices, as needed.
- Continue to manage displaced soil per the approved Soil Management Plan, as needed.

Attachment G contains the six-week look-ahead schedule available at this time. Any adjustments to the schedule will occur as needed via the weekly emails (sent at the start of each week) and/or the daily list of construction activities (published daily and discussed with agency and Tribal representatives on site on that day).

2.10 Construction Schedule Review

Table 2-4 summarizes the percent completeness for key Phase 2b construction activities, as of July 31, 2025. In addition, the latest project schedule including remedy construction can be downloaded [here](#) on the project website.

2.11 Available Sitewide Groundwater Monitoring Data (DTSC Condition of Approval xi)

Pursuant to Condition of Approval # xi in DTSC's approval letter dated August 24, 2018 (DTSC, 2018a), PG&E is required to report data from samples collected as part of the sitewide groundwater monitoring program within 60 days of sample collection. In compliance with this requirement, PG&E submitted validated data to DTSC via monthly emails. For ease of recordkeeping and to minimize the number of ad-hoc compliance reports/emails, PG&E has included data in each monthly progress report starting with the November 2018 monthly report. The data are included in Attachment G of this report.

2.12 IM-3 Shutdown and Preparation for Layup*

No changes to report this month.

2.13 Summary of Releases Occurred During Groundwater Remedy Construction

At the request of DTSC, a summary of releases (or spills) that occurred outside of containment and onto ground is provided in Table 2-5. The summary provides information about each release include date, location of release, type of material released, amount of material released (if known), and associated cleanup activities.

3. References

California Department of Toxic Substances Control (DTSC). 1996. *Corrective Action Consent Agreement (Revised), Pacific Gas and Electric Company's Topock Compressor Station, Needles, California*. EPA ID No. CAT080011729. February 2.

California Department of Toxic Substances Control (DTSC). 2018a. *Acceptance and Conditional Approval of Groundwater Remedy Design and Corrective Measures Implementation Workplan at Pacific Gas and Electric Company, Topock Compressor Station, Needles, California*. April 24.

California Department of Toxic Substances Control (DTSC). 2018b. *Final Subsequent Environmental Impact Report for the Pacific Gas and Electric Company Topock Compressor Station Final Groundwater Remediation Project*. April 24.

California Department of Toxic Substances Control (DTSC). 2019. [Community Outreach Plan, Pacific Gas and Electric Company's Topock Compressor Station, Needles, California](#). May.

CH2M HILL, Inc. (CH2M). 2014. *Final Programmatic Biological Assessment for Pacific Gas and Electric Topock Compressor Station Final Groundwater Remedy*. April 28.

CH2M HILL, Inc. (CH2M). 2015a. *Basis of Design Report/Final (100%) Design Submittal for the Final Groundwater Remedy, PG&E Topock Compressor Station, Needles, California*. November 18.

CH2M HILL, Inc. (CH2M). 2015b. *Construction/Remedial Action Work Plan for the Final Groundwater Remedy, PG&E Topock Compressor Station, Needles, California*. November 18.

United States Department of the Interior (DOI). 2012. [Community Involvement Plan, Pacific Gas and Electric Topock Compressor Station, Needles, California](#). September.

United States Department of the Interior (DOI). 2013. *Remedial Action/Remedial Design Consent Decree (CD) between the United States of America and Pacific Gas & Electric Company*. Case 5:13-cv-00074-BRO-OP, Document 23. Entered November 21.

United States Department of the Interior (DOI). 2018. *Approval of PG&E Topock Compressor Station Remediation Site – Basis of Design Report/Final (100%) Design Submittal and Construction/Remedial Action Work Plan for the Final Groundwater Remedy and the Supplemental and Errata Information for the Final (100%) Design for the Final Groundwater Remedy, PG&E Topock Compressor Station, Needles, California*. Letter from Pamela Innis/DOI to Curt Russell/PG&E. April 3.

Tables

The following tables did not have any updates, and are not included in this monthly report:

2-1c. Summary of Environmental Release-To-Operate

2-3. Summary of Work Variance Requests

Table 2-1a. Summary of Non-Well Environmental Release-To-Constructions*July 2025 Monthly Progress Report for the Final Groundwater Remedy Construction and Startup**PG&E Topock Compressor Station, Needles, California*

ERTC Number ^[a]	Brief Description of Covered Areas and Scope of Authorized Activities	Original Issue Date
Amendment 1 to ERTC 17 ^[b,c]	Scope included fence installation and planting in the revegetation areas in the floodplain.	March 18, 2022
Amendment 2 to ERTC 17 ^[b,c]	Scope included fence installation and planting in the UHR-1 revegetation area, located right off National Trails Highway.	April 4, 2022
ERTC 18	Scope included remedy pipeline installation within TCS.	April 15, 2022
Addendum 1 to ERTC 18	Scope included remedy electrical work inside TCS.	December 7, 2022
Addendum 2 to ERTC 18	Scope included additional remedy electrical work inside TCS.	March 2, 2023
Addendum 3 to ERTC 18	Scope included asphalt repair/placement and retaining wall rebuild inside TCS and asphalt placement on access road just outside TCS.	April 7, 2023
ERTC 19	Scope included remedy pipeline I2 installation in Bat Cave Wash.	Renewed March 2, 2023 for storm damage repair work (originally issued on July 15, 2022)
Addendum 1 to ERTC 19	Scope included the rebuild of the pipeline I2 access road damaged by the August 2022 storm events	February 16, 2023
Addendum 2 to ERTC 19	Scope included the re-installation of a V-ditch on east side of pipeline I2 access road.	May 11, 2023
Addendum 8 to ERTC 1 ^[d]	Scope included the expansion of the Soil Processing Yard during the Soil Non-Time Critical Removal Action.	July 18, 2022
ERTC 20	Scope included site preparation for remedy pipeline G installation in the floodplain.	August 8, 2022
Addendum 1 to ERTC 20	Scope included remedy pipeline G, riverbank well vaults, and aggregate-based access road on top of pipeline G.	August 18, 2022
Addendum 2 to ERTC 20	Scope included remedy electrical work between Electrical Node 2 and well RB-5.	December 16, 2022
ERTC 21 ^[e]	Scope included remedy pipeline E installation at and in the vicinity of the Transwestern Bench.	Renewed April 27, 2023 for asphalt repair/placement on portion of Pipeline E along NTH (originally issued on October 17, 2022)
Addendum 1 to ERTC 21	Scope included remedy electrical work along Pipeline E.	January 31, 2023
Addendum 2 to ERTC 21	Scoped included the installation of the sunshade at Node 1 and associated electrical work	November 7, 2024
ERTC 22 ^[e]	Scope included remedy pipeline C11 installation.	Renewed April 27, 2023 for asphalt placement on portion of Pipeline C11 crosses NTH (originally issued on January 9, 2023)
Miscellaneous erosion control ERTC	Scope included localized repair of the installed Pipeline F erosion control measures.	Renewed January 30, 2023 (originally issued in February 2021)

ERTC Number ^[a]	Brief Description of Covered Areas and Scope of Authorized Activities	Original Issue Date
Addendum 1 to ERTC 11b	Scope included installation of stormwater erosion control measures along Pipeline B access road.	Renewed March 14, 2023 for storm damage repair work <i>(originally issued in February 2022)</i>
Addendum 2 to ERTC 11b	Scope included repair of stormwater erosion control measures along Pipeline B access road.	May 22, 2023
ERTC 23	Scope included the installation of infrastructure for PTI-1D floodplain extraction test.	September 26, 2023
ERTC 24 (rescinded due to a delay of the start date by more than 30 days)	Scope included the installation of Pipeline C Segment 18 from Station 0+00 to 3+00 in the East Ravine	May 16, 2025
ERTC 24	Scope included the installation of Pipeline C Segment 18 and an AB access road in East Ravine. This ERTC replaces the ERTC #24 issued in May for a partial segment of C18 (Station 0+00 to 3+00).	July 2, 2025
Addendum 1 to ERTC 24	Scope included expansion of the allowed work area in a specific tight area within East Ravine.	July 28, 2025

^[a] For brevity and readability, the Non-Well ERTCs issued for Phase 1 construction, revegetation effort, and miscellaneous stormwater erosion control projects (October 2018 thru February 2022) are not listed in this report. For a complete list of those ERTCs, please Table 2-1a of the February 2022 Monthly Progress Report. The monthly progress reports can be accessed via the [Project website](#).

^[b] ERTC 17 was issued on December 15, 2021, for site preparation for mitigation planting, which involves the removal of tamarisk debris and root balls, offsite disposal of debris, installation of irrigation system, and leaching of soluble salts from the soil.

^[c] Addendum 1 and 2 to ERTC 17 were renewed to allow for mitigation planting in Fall 2022.

^[d] ERTC 1 was issued on August 10, 2018, for the setup at the Soil Processing Yard, Construction Headquarters, and various staging areas.

^[e] Renewed for asphalt repair/placement along and cross NTH.

ERTC = Environmental Release-To-Construction

TCS = Topock Compressor Station

Table 2-1b. Summary of Well Environmental Release-To-Constructions*July 2025 Monthly Progress Report for the Final Groundwater Remedy Construction and Startup**PG&E Topock Compressor Station, Needles, California*

ERTC Number ^[a]	Brief Description of Covered Areas and Scope of Authorized Activities	Original Issue Date
5aq	Scope included the site preparation for and drilling of freshwater injection well FW-2 along the access road to Bat Cave Wash.	February 22, 2022
5ar	Scope included the site preparation at the TW Bench for drilling of wells TWB-1 and TWB-2.	February 23, 2022
Amendment 1 to ERTC 5ar	Scope included the drilling of extraction wells TWB-1 and TWB-2 on the Transwestern Bench.	March 13, 2022
Amendment 2 to ERTC 5ar	Scope included installation of an office trailer and associated utility services at the Transwestern Bench.	May 11, 2023
5at	Scope included the site preparation for and drilling of extraction wells TCS-1 and TCS-2 inside the Compressor Station.	March 18, 2022
5as	Scope included the site preparation for and drilling of extraction wells ER-1 and ER-2 along historic route 66.	March 14, 2022
Addendum 1 to ERTC 5as	Scope included the 48-hour aquifer tests at extraction wells ER-1 and ER-2.	October 26, 2022
5au	Scope included the site preparation for and drilling of extraction well TWB-3.	April 21, 2022
Addendum 1 to ERTC 5aq	Scope included the site preparation for and drilling of FW-02B (also known as FW-2A' or FW-2Alt').	August 16, 2022
Addendum 2 to ERTC 5ah ^[b]	Scope included the re-establishment of a walking path for safe access to well MW-V (also called MW-95) for groundwater sampling.	Renewed April 18, 2023 for storm erosion repair work (originally issued on November 21, 2022)
5ay	Scope included the site preparation for and installation of extraction wells ER-3 and ER-4.	February 27, 2023
5ax	Scope included the repair of MW-11S well pad.	March 1, 2023
5az	Scope included the replacement of well MW-30-30 and installation of new monuments at MW-30-30, MW-30-50, ER-3, and ER-4.	October 5, 2023
Addendum 2 to ERTC 5s	Scope included the relocation of in-vault power and controls equipment to aboveground panels on stanchion with a sunshade at IRZ-39.	November 6, 2024
5ba	Scope included site preparation, well drilling, well installation, and well testing at IRL-2, IRL-3, and MW-I	March 14, 2025
5bb	Scope included site preparation, well drilling, well installation, and well testing at remaining upland wells	April 14, 2025
5bc	Scope included site access road construction, well site preparation, well drilling/ installation/testing at MW-JJ in north floodplain	July 31, 2025

^[a] For brevity and readability, the Well ERTCs issued for Phase 1 construction are not listed in this report. For a complete list of those ERTCs, please Table 2-1a of the February 2022 Monthly Progress Report. The monthly progress reports can be accessed via the [Project website](#).

^[a] Renewed ERTC for re-establishing access to MW-V.

ERTC = Environmental Release-To-Construction

TCS = Topock Compressor Station

Table 2-2. Monitoring Wells Nomenclature Changes

*July 2025 Monthly Progress Report for the Final Groundwater Remedy Construction and Startup
PG&E Topock Compressor Station, Needles, California*

Previous Well Name	New Well Name	Previous Well Name	New Well Name
MW-10D	MW-10D	MW-M-193	MW-84-193
MW-11D	MW-11D	MW-N-129	MW-85-129
MW-70BR-D	MW-70BR-289	MW-N-217	MW-85-217
MW-B-033	MW-75-033	MW-N-237	MW-85-237
MW-B-117	MW-75-117	MW-O-030	MW-86-030
MW-B-202	MW-75-202	MW-O-066	MW-86-066
MW-B-267R	MW-75-267	MW-O-120	MW-86-120
MW-B-337	MW-75-337	MW-O-140	MW-86-140
MW-C-039	MW-76-039	MW-R-109	MW-87-109
MW-C-156	MW-76-156	MW-R-139	MW-87-139
MW-C-181	MW-76-181	MW-R-192	MW-87-192
MW-C-218	MW-76-218	MW-R-275	MW-87-275
MW-D-046R	MW-77-046	MW-S-109	MW-88-109
MW-D-102	MW-77-102	MW-U-183	MW-89-183
MW-D-158	MW-77-158	MW-U-273	MW-89-273
MW-D-187	MW-77-187	MW-W-031	MW-90-031
MW-E-072	MW-78-072	MW-X-045	MW-91-045
MW-E-142	MW-78-142	MW-X-120	MW-91-120
MW-F-060	MW-79-060	MW-X-170	MW-91-170
MW-F-104	MW-79-104	MW-X-320	MW-91-320
MW-G-057	MW-80-057	MW-Y-037	MW-92-037
MW-G-082	MW-80-082	MW-Y-072	MW-92-072
Former IRZ-19	MW-81-43	MW-Y-102	MW-92-102
Former IRZ-19	MW-81-98	MW-Y-122	MW-92-122
MW-H-046	MW-82-046	MW-Z	MW-93
MW-H-112	MW-82-112	HYDRO-6 (deep)	MW-94-30
MW-H-168	MW-82-168	HYDRO-6 (mid)	MW-94-100
MW-H-198	MW-82-198	HYDRO-6 (shallow)	MW-94-175
MW-I	MW-100S; MW-100D	MW-V	MW-95-113; MW-95-157
MW-L-090	MW-83-090	MW-A	MW-96-045; MW-96-217
MW-L-180	MW-83-180	Former IRZ-11	MW-97-042; MW-97-202
MW-L-225	MW-83-225	Relocated MW-K	MW-98-055; MW-98-077
MW-L-245	MW-83-245	Second HYDRO-6	MW-99-40; MW-99-140
MW-M-057	MW-84-057	MW-P	MW-101
MW-M-095	MW-84-095	MW-AA	MW-102
FW-02A/'FW-02Alt'	FW-02B	MW-BB	MW-103
MW-M-132	MW-84-132		

Table 2-4. Summary of Cumulative Percent Completeness of Key Phase 2b Construction Activities
July 2025 Monthly Progress Report for the Final Groundwater Remedy Construction and Startup
PG&E Topock Compressor Station, Needles, California

Key Activity	% Complete	Cumulative Status of Phase 2b Construction Activities (as of July 31, 2025)
Remediation Well* Installation	10%	Pilot holes for FW-01, IRL-01, IRL-02, and IRL-03 have been drilled.
Remediation Well Downhole Installation	0%	
Monitoring Well** Installation	10%	<ul style="list-style-type: none"> ▪ MW-100 (former MW-I) wells (four total) have been installed. ▪ MW-102D (former MW-AA) installation is ongoing.
C18 Pipeline Installation - California	15%	<ul style="list-style-type: none"> ▪ Mobilization has been completed ▪ Site setup and utility location has been completed ▪ HDPE and conduit trench excavation has started
Pipeline A Installation – California	0%	
Other Remedy Infrastructure Installation - California	0%	
Pipeline B Installation - Arizona	0%	
Other Remedy Infrastructure Installation - Arizona	0%	
Remedy Electrical Work	0%	

Notes:

* Phase 2b remediation wells include FW-01, IRL-1, IRL-2, IRL-3, and IRL-4.

** Phase 2b monitoring wells include MW-P, MW-Q, MW-AA, MW-BB, MW-CC, MW-DD, MW-FF, and MW-GG.

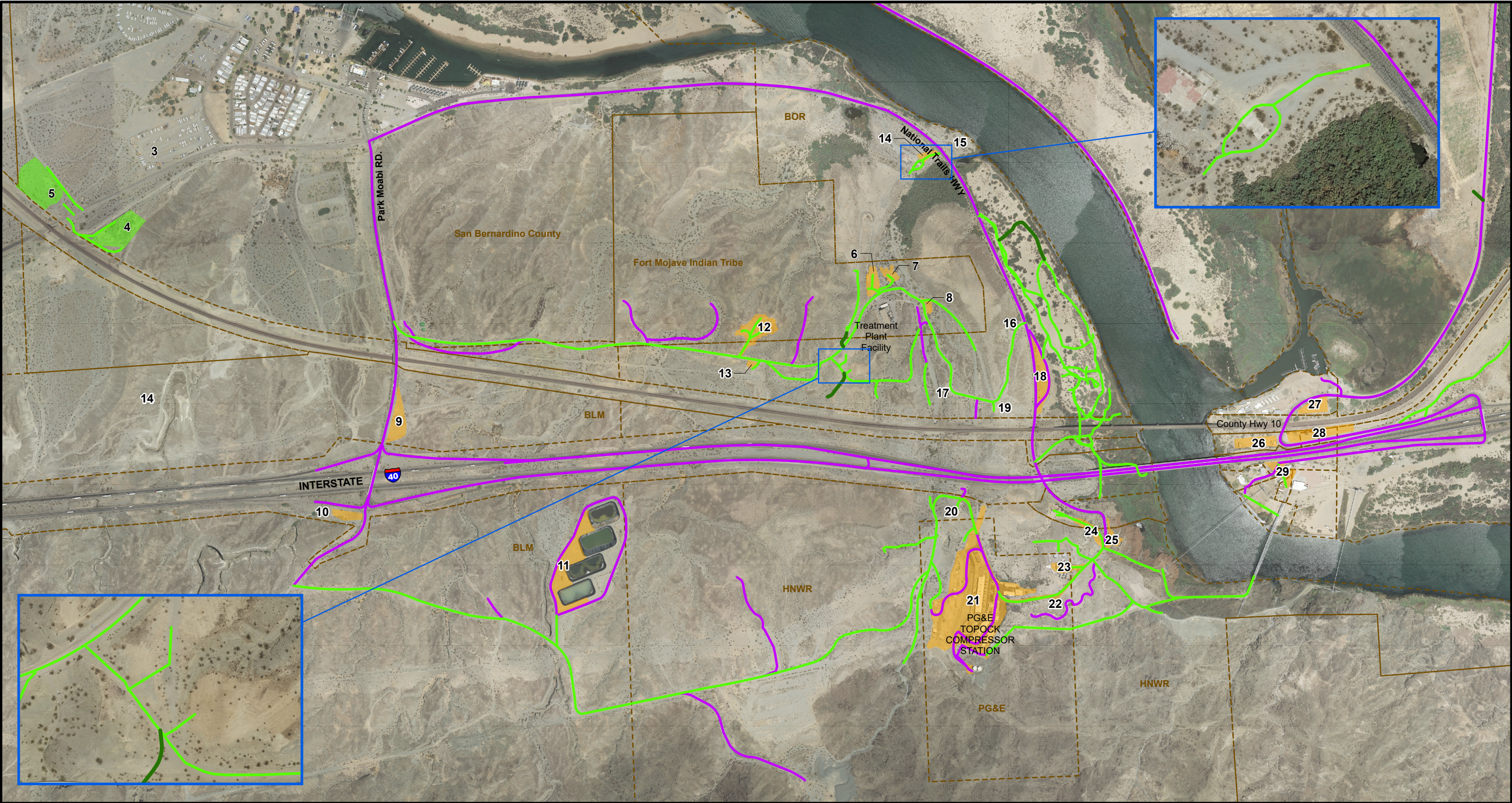
Table 2-5. Summary of Releases Occurred During Groundwater Remedy Construction and Startup
July 2025 Monthly Progress Report for the Final Groundwater Remedy Construction and Startup
PG&E Topock Compressor Station, Needles, California

Date Release Identified ^[a]	Release Location	Description of Release	Material Released Outside of Containment	Approximate Volume of Material Released	Cleanup Action	Corrective Action To Prevent Re-Occurrence
7/27/25	CHQ	A release of hydraulic fluid from a loose/unsecured hydraulic hose during transportation of a street sweeper on a skip loader across the CHQ.	Hydraulic fluid	Unknown – about 70 feet of impacted rocks was visible.	Impacted rocks and soils were removed and containerized in 5-gallon buckets. A sample of the impacted soil was collected and sent to lab.	Crews will discuss in the daily tailgate meetings reminders to conduct 360 walkarounds, as well as the responsibility of each team member to confirm that equipment must be properly secured before moving it.
7/10/25	Transwestern Bench	The porta potty tipped over due to a severe wind gust and released blue-colored wastewater onto ground. The wastewater did not reach the nearby stormwater outfall	Blue-colored wastewater	Unknown	An approximate 3 gallons of impacted soil was removed.	The porta potty was tied down with ropes tie to concrete buckets to prevent it from tipping over in the future.
6/27/25	MW-100D	A release of hydraulic fluid occurred during drilling. As the hydraulic fluid line was pressurized at the time of release, the fluid impacted the drill rig, support tinner, secondary containment, soils in the hopper, drilling mud in the mud tub, and soils on the drill pad.	Hydraulic fluid	About 1 gallon	Impacted soil was removed and containerized at the drill pad. After the drill rig is moved off the location, an inspection was conducted and determined that no additional cleanup is needed. The drill rig and equipment were decontaminated at the Transwestern Bech. Wastewater generated was sampled to determine disposal options.	Additional inspections will be conducted on the hydraulic lines of the breakout table jaws during rough drilling condition. Ensure spare lines and parts are available for replacement.
6/15/25	MW-100D	A release of drilling water and mud from mud tub occurred as the drill crew pumped out water from the mud tub with a trash pump. While the trash pump was inside a containment, the hose connections were not, resulting in release to ground.	Drilling water and mud	About ½ gallon	About 1.5 gallons of the impacted soil was removed and containerized in a 5-gallon bucket. The trash pump was placed on secondary containment big enough for hose connections to be located within secondary containment.	Reminders communicated to staff during the daily tailboard safety meetings to make necessary changes to secondary containments when non-routine tasks are being performed.
5/31/25	IM-3 Access Road/Entrance to IRL-4 Work Area	A release of diesel from dump truck(s)	Diesel fuel	About 2 quarts	Impacted soil/rock was removed and place into a 55-gallon drum at the MW-20 Bench. Release is due to thermal expansion of diesel in the fuel tank of dump truck(s)	Fuel construction equipment including dump truck(s) to about 75% capacity to allow for thermal expansion.

Date Release Identified ^[a]	Release Location	Description of Release	Material Released Outside of Containment	Approximate Volume of Material Released	Cleanup Action	Corrective Action To Prevent Re-Occurrence
					hauling excavated soil from IRL-4 to the soil processing yard.	
5/9/25	IRL-1 (within Staging Area 6)	A release of freshwater	Freshwater	5-10 gallons	Impacted soil/rock was removed and placed into 5-gallon buckets. The release was due to a mud tub seal break while conducting cleanout runs after the 10-inch temporary conductor casing was advanced. Soil built up inside the 10-inch casing caused the vibration that broke the mud tub seal.	Remove soil build up inside casing. Procure a new mud tub to replace the older one to help create a better mud tub seal.
4/16/25	IRL-3	A release of hydraulic oil from the drill rig to ground	Hydraulic oil mixed with lube oil	About 0.25 gallon (most fell into secondary containment)	Impacted soil and rock was removed and placed into a bucket at the MW-20 Bench. Release was due to a seal failing. The drill rig was removed from site for repair.	Increase routine inspections in areas of hard drilling as this increases vibrations on drilling equipment.
2/12/25	MW-20 Bench	A release of hydraulic oil from a rental telehandler to ground.	Hydraulic oil	About 0.1 gallon	The rental telehandler was inspected upon delivery and used for two days prior to the release. A mechanic inspected the equipment on 2/13/25 and determined that repair was needed. The equipment was removed from the site on 2/18/25. Approximately 1.5 gallons of impacted soil and rock was removed and placed into a bucket. The bucket is stored at the MW-20 Bench.	If equipment is to be driven for a longer period of time at a higher RPM than the normal running speed (i.e. if it is being driven down the road to another work site), a secondary inspection will be conducted upon arrival to the work area in addition to the morning inspection. The Heavy Equipment Operation JSA has been marked up to document this change.
1/11/25	IRZ-37	A release of approximately 0.5 gallon of well rehabilitation acid solution was released from a transfer hose to ground.	Well rehabilitation solution (a mixture of well rehab acids [Nuwell 210 and Nuwell 310], and freshwater	About 0.5 gallon	Approximately 3 gallons of impacted soil were removed and placed into a bucket. The bucket was brought to the MW-20 Bench. A sample of the impacted soil was collected by Compliance personnel on 1/14/25 for analysis. Analytical results indicated that the impacted soil is non-hazardous.	SOP was updated to clarify process disconnecting any hose sections and ensuring the plastic liner on the ground is long enough to fully walk out the lengths of hoses used to perform work.

^[a] For brevity and readability, releases prior to 2025 are not listed in this report. For a complete list of those releases, please Table 2-5 of the February 2025 Monthly Progress Report. The monthly progress reports can be accessed via the [Project website](#).

Figures

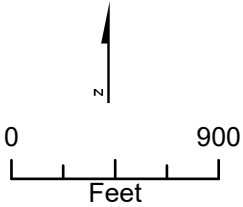


LEGEND

- Existing Access Route continue to be used for remedial activities
- Existing Route to be used and maintained for access to remedial activities
- Roads to be improved or constructed for groundwater remedy
- Staging Areas for Remediation Project
- Soil Processing Yard (Area #5) and Construction Headquarter (Area #4) for Remediation Project

Notes:

- Area #3 was not be used as the Construction Headquarter (CHQ). The CHQ was moved to Area #4.
- Area #9 is the primary truck inspection area. Areas #4, 5, 18, and 25 might also be used depending on the specific construction activity.
- Decontamination pads will be located in Area #4 (Construction Headquarters), Area #21 (Topock Compressor Station), and Area #23 (Transwestern Bench).
- Areas #15, 16, 17, 19, and 20 will not be used as staging areas. Areas #16, 17, and 19 may be part of the primary work zones for remedy infrastructure along the access road.
- Area #20 may be part of the primary work zone for installation of future provisional well IRL-6 (if determined to be needed in the future) and associated piping/concrete/vault.
- Public roadways outside of the EIR project area and the APE can also be used for remedy implementation.



UPDATED 03/10/2025

**FIGURE 2-1
CONSTRUCTION SITE PLAN
AND ACCESS ROUTES**

GROUNDWATER REMEDY PHASE 1
CONSTRUCTION
PG&E TOPOCK COMPRESSOR STATION
NEEDLES, CALIFORNIA



Legend


 Phase 2b Well

Figure 2-2
Phase 2b Well Locations
 PG&E Topock Compressor Station,
 Needles, California

Attachments

The following attachments did not have any updates, and are not included in this monthly report:

- B. Available Boring and Well Construction Logs, Groundwater Sample Results from Well Drilling, and Well Testing Activities
- D. Perimeter Air Sampling Analytical Results

Attachment A

Photographs



Photo showing Pipeline C18 trench in the East Ravine.

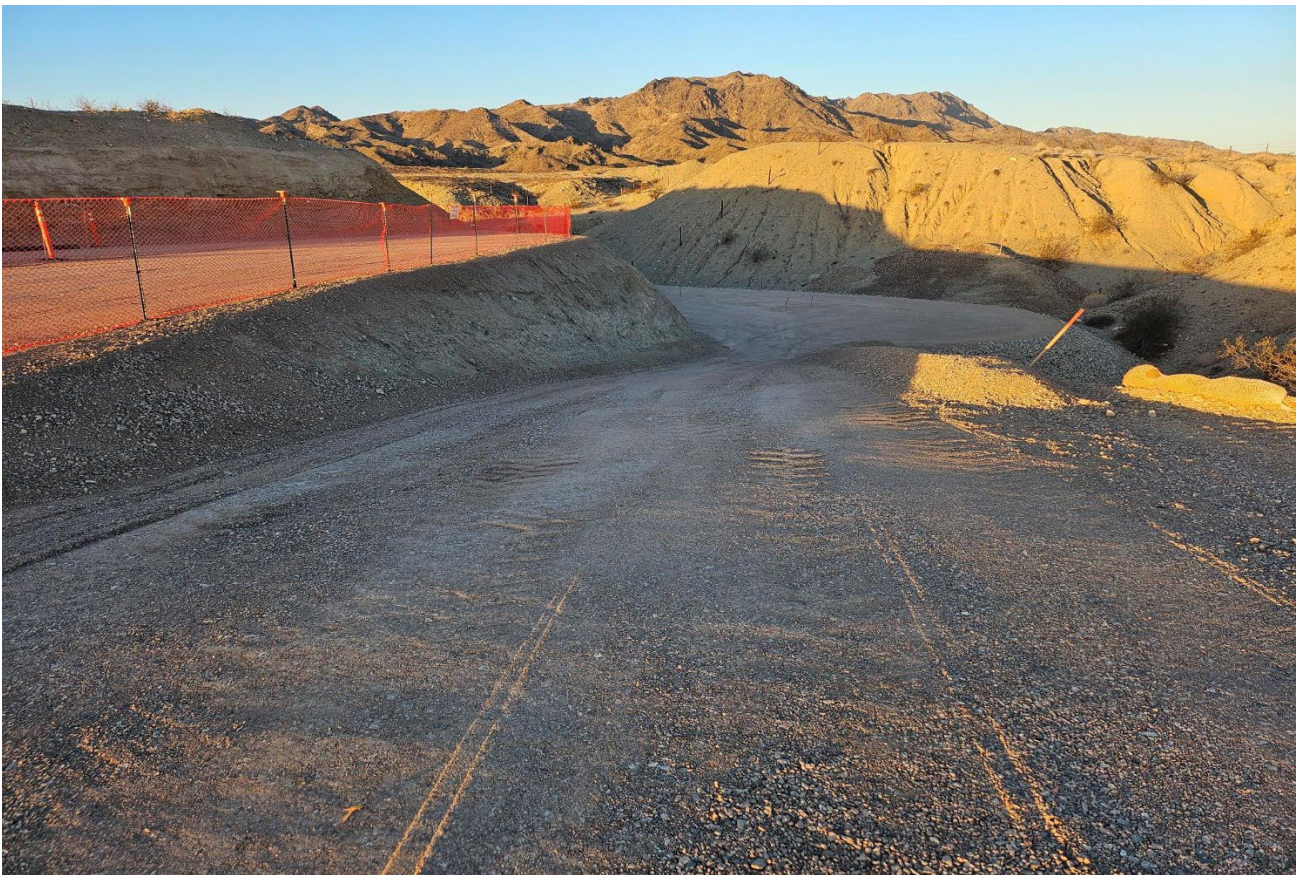


Photo showing the access road to IRL-4.



Photo showing drilling at MW-102 (former MW-AA) in the foreground and construction of MW-103 (former MW-BB) drill pad in the background.



Photo showing construction of the drill pad for MW-103 (former MW-BB) on IM3 access road.

Attachment C
Soil Sampling Locations and Available Soil
Analytical Results



Legend

- Phase 2b Well
- Soil Samples Collected in July 2025
- Soil Samples Collected in June 2025

Note:

- MW-100 is former MW-I



Baseline Soil Sampling
PG&E Topock Compressor Station,
Needles, California

Attachment E
Noise Monitoring Results
(SEIR NOISE-2 and NOISE-3 Requirement)

Attachment E. Noise Monitoring Results

In conformance with the Supplemental Environmental Impact Report (SEIR) Mitigation Measure NOISE-2, noise monitoring has been conducted with ANSI S1.4 Type 1, precision sound level meters when construction activities are within the specified distance (e.g., 1,850 feet from sensitive receptors in California) at approved monitoring locations previously determined in coordination with the Tribes and landowners/managers. The goal of the noise monitoring is to identify if noise levels from project construction activities exceed applicable standards of the San Bernardino and Mohave County codes. Exceedance of standards would require coordination with the Tribes and landowners/managers to evaluate the potential constraints and locations for temporary engineered acoustical barriers. Consistent with the request of the Tribes, monitoring equipment is not left at the approved monitoring locations; rather, it is mounted on a tripod for attended representative measurements and removed when the monitoring event is complete.

When a new construction activity is conducted or a previously monitored construction activity is conducted closer to a noise-sensitive area, monitoring is conducted at more frequent intervals to evaluate the potential need for an acoustical barrier. As the activities continue in the same location and multiple attended measurements indicate that the applicable standard has not been exceeded by the construction activity, periodic attending monitoring events are conducted to confirm continued compliance.

The attended monitoring events document the A-weighted equivalent continuous sound level (L_{eq}) at periodic intervals (e.g., 5, 10, 15, 20, 30, 40, 50 and 60 minutes). The trend of the data at these intervals is evaluated in the field to assess the stability in the sound level to determine the duration of the monitoring event. To date, when the interval data are relatively stable or clearly below the standard, the attended monitoring event is typically be 10 minutes in duration. As the applicable standards are expressed in terms of the 24-hour average day-night sound level (L_{dn}) which is based on the L_{eq} metric, the measured L_{eq} is compared to the applicable L_{dn} standard for mobile noise sources (i.e., 60 A-weighted decibels [dBA] for Park Moabi, 65 dBA at all other locations). This results in a reasonable and conservative assessment given construction activities are not emitting noise continuously over a 24-hour period, nor are they occurring frequently during the nighttime hours (10 p.m. to 7 a.m.).

In July 2025, the following monitoring events were conducted:

- Sixteen events at the pre-approved location west of the mobile home park at Moabi Regional Park. Construction activities closest to this monitoring location include soil management activities at the SPY and Construction Headquarters (CHQ), as well as traffic on NTH. The sound level typically varied between 42 and 62 dBA, with an average and median of 51-52 dBA.
- One event at the pre-approved location near the UHR-1 mitigation planting area. In July 2025, construction-related activity closest to this monitoring location is primarily construction traffic on National Trails Highway. The sound level collected during the event is 57 dbA. Since noise from construction traffic is already monitored at the Park Moabi location, noise monitoring at this location will temporarily cease in July and will re-start in August.
- Fifteen events at the pre-approved location near and at the same elevation as Maze C. Construction activities closest to this monitoring location are associated with drilling at MW-100 (former MW-I) and MW-102 (former MW-AA). The sound level typically varied between 47 and 65 dBA, with an average and median of 55-56 dBA.

Due to close proximity of MW-100 and MW-102 to this pre-approved monitoring location, sound curtain was erected during drilling at both locations.

Attachment F
Six-Week Look-Ahead Schedule

Six-Week Look-Ahead Schedule
PG&E Topock Compressor Station Remedial Activities

Activity	Sunday	Monday	Tuesday	Wednesday	Thursday	Friday	Saturday
Primary Planned Activities	8/3/2025	8/4/2025	8/5/2025	8/6/2025	8/7/2025	8/8/2025	8/9/2025
Start Time (PST)	5:30 AM	5:30 AM	5:30 AM	5:30 AM	5:30 AM	5:30 AM	5:30 AM
Site Wide Groundwater Sampling G3*, F3*, E4*, F4*, G4*, D5*, E5*, F5*, G5*, D6*, E6*, F6*, & G6*	No Work	No Work	No Work	No Work	No Work	No Work	No Work
Site Wide Construction E4*, F4*, G5*, E5*, F5*	No Work	No Work	*MW-BB Drilling Site Preparation, MW-AA/102 Drilling C18 Pipeline Installation	*MW-BB Drilling Site Preparation, MW-AA/102 Drilling C18 Pipeline Installation	*MW-BB Drilling Site Preparation, MW-AA/102 Drilling C18 Pipeline Installation MW-JJ Pre-Work Field Review	*MW-FF, MW-GG, and IRL-4 Drilling Site Preparation, MW-AA/102 Drilling C18 Pipeline Installation	*MW-FF, MW-GG, and IRL-4 Drilling Site Preparation, MW-AA/102 Drilling C18 Pipeline Installation
Site Wide Revegetation F5*, F6*, D5*	No Work	No Work	No Work	No Work	Irrigation O&M	No Work	No Work
Primary Planned Activities	8/10/2025	8/11/2025	8/12/2025	8/13/2025	8/14/2025	8/15/2025	8/16/2025
Start Time (PST)	5:30 AM	5:30 AM	5:30 AM	5:30 AM	5:30 AM	5:30 AM	5:30 AM
Site Wide Groundwater Sampling G3*, F3*, E4*, F4*, G4*, D5*, E5*, F5*, G5*, D6*, E6*, F6*, & G6*	No Work	Monthly Sampling	Monthly Sampling	Monthly Sampling	Monthly Sampling	Monthly Sampling	No Work
Site Wide Construction E4*, F4*, G5*, E5*, F5*	*MW-FF, MW-GG, and IRL-4 Drilling Site Preparation, MW-AA/102 Drilling C18 Pipeline Installation	*MW-FF, MW-GG, and IRL-4 Drilling Site Preparation, MW-AA/102 Drilling C18 Pipeline Installation	*MW-FF, MW-GG, and IRL-4 Drilling Site Preparation, MW-AA/102 Drilling C18 Pipeline Installation	*MW-JJ and MW-J Drilling Site Preparation, MW-AA/102 Drilling C18 Pipeline Installation	*MW-JJ and MW-J Drilling Site Preparation, MW-AA/102 Drilling C18 Pipeline Installation	No Work	No Work
Site Wide Revegetation F5*, F6*, D5*	No Work	No Work	No Work	No Work	Irrigation O&M	No Work	No Work
Primary Planned Activities	8/17/2025	8/18/2025	8/19/2025	8/20/2025	8/21/2025	8/22/2025	8/23/2025
Start Time (PST)	5:30 AM	5:30 AM	5:30 AM	5:30 AM	5:30 AM	5:30 AM	5:30 AM
Site Wide Groundwater Sampling G3*, F3*, E4*, F4*, G4*, D5*, E5*, F5*, G5*, D6*, E6*, F6*, & G6*	No Work	Ponds, River, and Hydro6 Sampling	Ponds, River, and Hydro6 Sampling MW-15 Sampling	Ponds, River, and Hydro6 Sampling	Ponds, River, and Hydro6 Sampling	Ponds, River, and Hydro6 Sampling	No Work
Site Wide Construction E4*, F4*, G5*, E5*, F5*	No Work	No Work	*MW-JJ and MW-J Drilling Site Preparation, MW-P/101 and MW-BB/103 Mobilization and Site Setup, MW-100 Development Site Setup C18 Pipeline Installation	*MW-JJ and MW-J Drilling Site Preparation, MW-P/101 Drilling, MW-BB/103 Drilling, MW-100 Development C18 Pipeline Installation	*MW-JJ and MW-J Drilling Site Preparation, MW-P/101 Drilling, MW-BB/103 Drilling, MW-100 Development C18 Pipeline Installation	*MW-JJ and MW-J Drilling Site Preparation, MW-P/101 Drilling, MW-BB/103 Drilling, MW-100 Development C18 Pipeline Installation	*MW-JJ and MW-J Drilling Site Preparation, MW-P/101 Drilling, MW-BB/103 Drilling, MW-100 Development C18 Pipeline Installation
Site Wide Revegetation F5*, F6*, D5*	No Work	No Work	No Work	No Work	Irrigation O&M	No Work	No Work
Primary Planned Activities	8/24/2025	8/25/2025	8/26/2025	8/27/2025	8/28/2025	8/29/2025	8/30/2025
Start Time (PST)	5:30 AM	5:30 AM	5:30 AM	5:30 AM	5:30 AM	5:30 AM	5:30 AM
Site Wide Groundwater Sampling G3*, F3*, E4*, F4*, G4*, D5*, E5*, F5*, G5*, D6*, E6*, F6*, & G6*	No Work	Quarterly Sampling	Quarterly Sampling	Quarterly Sampling	Quarterly Sampling	Quarterly Sampling	No Work
Site Wide Construction E4*, F4*, G5*, E5*, F5*	*MW-JJ and MW-J Drilling Site Preparation, MW-P/101 Drilling, MW-BB/103 Drilling, MW-100 Development C18 Pipeline Installation	*MW-JJ and MW-J Drilling Site Preparation, MW-P/101 Drilling, MW-BB/103 Drilling, MW-100 Development C18 Pipeline Installation	*MW-JJ and MW-J Drilling Site Preparation, MW-P/101 Drilling, MW-BB/103 Drilling, MW-100 Development C18 Pipeline Installation	*MW-JJ and MW-J Drilling Site Preparation, MW-P/101 Drilling, MW-BB/103 Drilling, MW-100 Development C18 Pipeline Installation	*MW-JJ and MW-J Drilling Site Preparation, MW-P/101 Drilling, MW-BB/103 Drilling, MW-100 Development C18 Pipeline Installation	No Work	No Work
Site Wide Revegetation F5*, F6*, D5*	No Work	No Work	No Work	No Work	Irrigation O&M	No Work	No Work
Primary Planned Activities	8/31/2025	9/1/2025	9/2/2025	9/3/2025	9/4/2025	9/5/2025	9/6/2025
Start Time (PST)	5:30 AM	5:30 AM	5:30 AM	5:30 AM	5:30 AM	5:30 AM	5:30 AM
Site Wide Groundwater Sampling G3*, F3*, E4*, F4*, G4*, D5*, E5*, F5*, G5*, D6*, E6*, F6*, & G6*	No Work	No Work	No Work	No Work	No Work	No Work	No Work
Site Wide Construction E4*, F4*, G5*, E5*, F5*	No Work	No Work	No Work	*MW-DD Drilling Site Preparation, MW-P/101 Drilling, MW-BB/103 Drilling, FW-01 Drilling Mobilization and Site Setup, MW-102 Development Site Setup C18 Pipeline Installation	*MW-DD Drilling Site Preparation, MW-P/101 Drilling, MW-BB/103 Drilling, FW-01 Drilling, MW-102 Development C18 Pipeline Installation, MW-20 Bench Mechanical	*MW-DD Drilling Site Preparation, MW-P/101 Drilling, MW-BB/103 Drilling, FW-01 Drilling, MW-102 Development C18 Pipeline Installation, MW-20 Bench Mechanical	*MW-DD Drilling Site Preparation, MW-P/101 Drilling, MW-BB/103 Drilling, FW-01 Drilling, MW-102 Development C18 Pipeline Installation, MW-20 Bench Mechanical
Site Wide Revegetation F5*, F6*, D5*	No Work	No Work	No Work	No Work	Irrigation O&M	No Work	No Work
Primary Planned Activities	9/7/2025	9/8/2025	9/9/2025	9/10/2025	9/11/2025	9/12/2025	9/13/2025
Start Time (PST)	5:30 AM	5:30 AM	5:30 AM	5:30 AM	5:30 AM	5:30 AM	5:30 AM
Site Wide Groundwater Sampling G3*, F3*, E4*, F4*, G4*, D5*, E5*, F5*, G5*, D6*, E6*, F6*, & G6*	No Work	Monthly Sampling	Monthly Sampling	Monthly Sampling	Monthly Sampling	No Work	No Work
Site Wide Construction E4*, F4*, G5*, E5*, F5*	*MW-DD Drilling Site Preparation, MW-P/101 Drilling, MW-BB/103 Drilling, FW-01 Drilling, MW-102 Development C18 Pipeline Installation	*MW-P/101 Drilling, MW-BB/103 Drilling, FW-01 Drilling, MW-102 Development C18 Pipeline Installation, MW-20 Bench Mechanical	*MW-P/101 Drilling, MW-BB/103 Drilling, FW-01 Drilling C18 Pipeline Installation, MW-20 Bench Mechanical	*MW-P/101 Drilling, MW-BB/103 Drilling, FW-01 Drilling C18 Pipeline Installation, MW-20 Bench Mechanical	*MW-P/101 Drilling, MW-BB/103 Drilling, FW-01 Drilling C18 Pipeline Installation, MW-20 Bench Mechanical	No Work	No Work
Site Wide Revegetation F5*, F6*, D5*	No Work	No Work	Monitoring	*Monitoring/Weeding Soil Sampling	Monitoring/Weeding Irrigation O&M	Monitoring/Weeding	Monitoring
	Note: The Pre-Work Field Review was formerly known as the Last Look						



Figure showing a grid superimposed on the Topock site map. Each grid position is denoted by an letter followed by a number.

Attachment G
Groundwater Monitoring Data (DTSC
Condition of Approval xi)

(Groundwater Data Presented in Separate PDF)