



Kristina Bonnett
Environmental Remediation

Topock Compressor Station
145453 National Trails Hwy
Needles, CA 92363

Mailing Address
P.O. Box 337
Needles, CA 92363

628.219.8380
Email: kaby@pge.com

October 10, 2024

Ms. Veronica Dickerson, RSO
Environmental Compliance and Cleanup Division
Office of Environmental Policy and Compliance (OEPC)
US Department of Interior

Mr. Christopher Ioan
California Department of Toxic Substances Control
5796 Corporate Avenue
Cypress, CA 90630

Subject: September 2024 Monthly Progress Report for the Final Groundwater Remedy Construction and Startup, PG&E Topock Compressor Station, Needles, California
(Document ID: TPK_Monthly_Progress_Rpt_September_2024_20241010)

Dear Ms. Dickerson and Mr. Ioan:

In compliance with the *1996 Corrective Action Consent Agreement* (Attachment 6, Part E, Section 9a and Attachment 7) and the *2013 Remedial Design/Remedial Action Consent Decree* (Paragraph 32 and Appendix C, Section 5), and pursuant to the *Construction/Remedial Action Work Plan (C/RAWP)* (Section 2.6.3.1), this monthly report describes activities taken at Pacific Gas and Electric Company's (PG&E's) Topock Compressor Station in September 2024, as well as activities planned for the next six weeks (October 6 to November 16, 2024), and presents available results from sampling and testing, if any, performed in the reporting period.

This report also discusses material deviations from the approved design documents and/or the C/RAWP, if any, that PG&E has proposed to the California Department of Toxic Substances Control (DTSC) and U.S. Department of the Interior (DOI), or that have been approved by DTSC and DOI. This report highlights key personnel changes, if any, and summarizes activities performed and activities planned in support of DOI's 2012 Community Involvement Plan and DTSC's 2019 Community Outreach Plan, as well as contacts with the local community, representatives of the press, and/or public interest groups, if any. This report also includes data from samples collected as part of the sitewide groundwater monitoring program within 60 days of sample collection, as required by the Condition of Approval # xi in DTSC's approval letter dated August 24, 2018.

Please note that since activities conducted to comply with the project's Applicable or Relevant and Appropriate Requirement and the Subsequent Environmental Impact Report mitigation measures are currently reported in separate compliance reports, this information is not repeated in the monthly reports. Monthly progress reports will be submitted to DTSC and DOI by the 10th day of the following month during construction and startup of the groundwater remedy at the Topock Compressor Station which officially began on October 2, 2018. This is the 72nd monthly progress report. Please contact me at (628) 219-8380 if you have any questions or comments regarding this submittal.

Sincerely,

A handwritten signature in black ink that reads 'Kristina Bonnett'. The signature is written in a cursive, flowing style.

Kristina Bonnett
Topock Technical Project Manager

Topock Project Executive Abstract

<p>Document Title: <i>September 2024 Monthly Progress Report for the Groundwater Remedy Construction and Startup, PG&E Topock Compressor Station, Needles, California</i></p> <p>Submitting Agency: DOI, DTSC</p> <p>Final Document? <input checked="" type="checkbox"/> Yes <input type="checkbox"/> No</p>	<p>Date of Document: 10/10/2024</p> <p>Who Created this Document? (i.e. PG&E, DTSC, DOI, Other) PG&E</p>
<p>Priority Status: <input type="checkbox"/> HIGH <input type="checkbox"/> MED <input checked="" type="checkbox"/> LOW</p>	<p>Is this time critical? <input type="checkbox"/> Yes <input checked="" type="checkbox"/> No</p>
<p>Type of Document:</p> <p><input type="checkbox"/> Draft <input checked="" type="checkbox"/> Report <input type="checkbox"/> Letter <input type="checkbox"/> Memo</p> <p><input type="checkbox"/> Other / Explain:</p>	<p>Action Required:</p> <p><input checked="" type="checkbox"/> Information Only <input type="checkbox"/> Review and Input</p> <p><input type="checkbox"/> Other / Explain:</p>
<p>What does this information pertain to?</p> <p><input type="checkbox"/> Resource Conservation and Recovery Act (RCRA) Facility Assessment (RFA)/Preliminary Assessment (PA)</p> <p><input type="checkbox"/> RCRA Facility Investigation (RFI)/Remedial Investigation (including Risk Assessment)</p> <p><input type="checkbox"/> Corrective Measures Study (CMS)/Feasibility Study (FS)</p> <p><input checked="" type="checkbox"/> Corrective Measures Implementation/Remedial Action (RA)</p> <p><input type="checkbox"/> California Environmental Quality Act/ Environmental Impact Report (EIR)</p> <p><input type="checkbox"/> Interim Measures</p> <p><input type="checkbox"/> Other / Explain:</p>	<p>Is this a Regulatory Requirement?</p> <p><input checked="" type="checkbox"/> Yes</p> <p><input type="checkbox"/> No</p> <p>If no, why is the document needed?</p>
<p>What is the consequence of NOT doing this item? What is the consequence of DOING this item?</p> <p>The consequence for not doing this item is PG&E will be out of compliance with the 1996 Corrective Action Consent Agreement (CACA) and the 2013 Remedial Design/ Remedial Action Consent Decree (CD), as well as the Construction/Remedial Action Work Plan (C/RAWP).</p>	<p>Other Justification/s:</p> <p><input type="checkbox"/> Permit <input type="checkbox"/> Other / Explain:</p>
<p>Brief Summary of attached document:</p> <p>This monthly report describes activities taken in September 2024 as well as activities planned for the next six weeks (October 6 to November 16, 2024) and presents available results from sampling and testing in the reporting period. In addition, this report discusses material deviations from the approved design documents and/or the <i>Construction/ Remedial Action Work Plan (C/RAWP)</i>, if any, that PG&E has proposed to the California Department of Toxic Substances Control (DTSC) and the U.S. Department of the Interior (DOI) or that have been approved by DTSC and DOI. This report also highlights key personnel changes, if any, and summarizes activities performed and activities planned at the Topock Compressor Station in support of DOI's 2012 Community Involvement Plan and DTSC's 2019 Community Outreach Plan, as well as contacts with local community, representatives of the press, and/or public interest groups, if any.</p> <p>Written by: Pacific Gas and Electric Company</p>	
<p>Recommendations:</p> <p>Provide input to PG&E.</p>	
<p>How is this information related to the Final Remedy or Regulatory Requirements:</p> <p>This submittal is required in compliance with the CACA, CD, and pursuant to the C/RAWP.</p>	
<p>Other requirements of this information?</p> <p>None.</p>	



September 2024
Monthly Progress Report for the
Final Groundwater Remedy Construction and Startup

PG&E Topock Compressor Station
Needles, California

Document ID: TPK_Monthly_Progress_Rpt_September_20241010

October 2024

Prepared for
U.S. Department of the Interior and California Department of Toxic Substances Control

On Behalf of
Pacific Gas and Electric Company



Contents¹

Topock Project Executive Abstract	iii
Acronyms and Abbreviations	ix
1. Introduction	1
2. Monthly Update	2
2.1 Work Completed	2
2.2 Freshwater Usage, Waste Generation, and Management	3
2.2.1 Freshwater and Wastewater	3
2.2.2 Displaced Materials/Soils/Clay	4
2.2.3 General Construction Waste, Sanitary Waste, and Recyclables	4
2.3 Worker Training and Education	4
2.4 Status of Work Variance Requests*	4
2.5 Use of Future Activity Allowance*	4
2.6 Issues Encountered and Actions Taken to Rectify Issues/Problems*	4
2.7 Key Personnel Changes*	4
2.8 Communication with the Public	4
2.9 Planned Activities for Next Six Weeks	4
2.10 Construction Schedule Review*	5
2.11 Available Sitewide Groundwater Monitoring Data (DTSC Condition of Approval xi)	5
2.12 IM-3 Shutdown and Preparation for Layup*	5
2.13 Summary of Releases Occurred During Groundwater Remedy Construction*	5
3. References	5

Tables

2-1a. Summary of Non-Well Environmental Release-To-Constructions*
2-1b. Summary of Well Environmental Release-To-Constructions*
2-1c. Summary of Environmental Release-To-Operate*
2-2. Monitoring Wells Nomenclature Changes*
2-3. Summary of Work Variance Requests*
2-4. Summary of Cumulative Percent Completeness of Key Phase 2 Construction Activities*
2-5. Summary of Releases Occurred During Groundwater Remedy Construction*

Figures

2-1 Construction Site Plan and Access Routes
2-2 Well Locations

Attachments

A Photographs*
B Available Boring and Well Construction Logs, Groundwater Sample Results from Well Drilling, and Well Testing Activities*
C Soil Sampling Locations and Available Soil Analytical Results*
D Perimeter Air Sampling Analytical Results*
E Noise Monitoring Results (SEIR NOISE-2 Requirement)*
F Six-Week Look-Ahead Schedule
G Groundwater Monitoring Data (DTSC Condition of Approval xi)

¹ Sections/Tables/Attachments denoted with * have no changes since last reporting period. They will not appear in the body of the report. This abbreviated reporting format has been implemented since the March 2024 Monthly Progress Report.

Acronyms and Abbreviations

Acronym	Definition
AOC	area of concern
CACA	Corrective Action Consent Agreement
C/RAWP	Construction/Remedial Action Work Plan
CD	Consent Decree
DOI	United States Department of the Interior
DTSC	California Department of Toxic Substances Control
ERTC	Environmental Release to Construct
IM-3	Interim Measure No. 3
IRZ	in-situ reactive zone
O&M	operations and maintenance
PG&E	Pacific Gas and Electric Company
RCRA	Resource Conservation and Recovery Act
SEIR	Subsequent Environmental Impact Report
TCS	Topock Compressor Station

1. Introduction

Pacific Gas and Electric Company (PG&E) is implementing the final groundwater remedy to address chromium in groundwater near the PG&E Topock Compressor Station (TCS), located in eastern San Bernardino County 15 miles southeast of the city of Needles, California. The U.S. Department of the Interior (DOI) is the lead federal agency overseeing remedial actions at the TCS. PG&E and the United States executed a Remedial Design/Remedial Action Consent Decree (CD), on behalf of the DOI, under the Comprehensive Environmental Response, Compensation, and Liability Act in 2012, which was approved by the U.S. District Court for the Central District of California in November 2013 (DOI, 2013). Paragraph 32 and Appendix C (Section 5) of the CD requires PG&E to submit to DOI monthly electronic progress reports during construction of the remedial action, and to submit progress reports on a quarterly basis after the selected remedy has been implemented and demonstrated to be operating as intended.

The California Department of Toxic Substances Control (DTSC) is the lead state agency overseeing corrective actions at the TCS. Remedial activities are being performed in conformance with the requirements of the Resource Conservation and Recovery Act Corrective Action pursuant to a Corrective Action Consent Agreement (CACA) entered into by PG&E and the DTSC in February 1996 (DTSC, 1996). Attachment 6, Part E, Section 9a and Attachment 7 of the CACA require PG&E to provide certain information in monthly progress reports during construction of the corrective action.

In compliance with the CACA and CD requirements, PG&E proposed a template for the monthly progress reports in Exhibit 2.6-2 of the Construction/Remedial Action Work Plan (C/RAWP) (CH2M, 2015b). The C/RAWP was approved by DOI on April 3, 2018 (DOI, 2018) and DTSC on April 24, 2018 (DTSC, 2018a).

This is the 72nd of the monthly progress reports that will be submitted to DOI and DTSC for the duration of the remedy construction and startup. This monthly progress report documents activities during September 2024, and follows the content and format described in Exhibit 2.6-2 of the approved C/RAWP. The report is organized as follows:

- Sections 2.1 through 2.7 describe completed construction activities; data collected, generated or received; nature and volume of waste generated; waste handling/disposal; issues encountered; actions taken to rectify problems/issues; personnel changes; and Work Variance Requests (i.e., material deviations from the design documents, the C/RAWP, or other approved work plans), if any, as well as agencies' actions on those requests, and potential schedule impacts.
- Sections 2.8 through 2.9 summarize key project personnel changes, if any, contacts with representatives of the press, local community, or public interest groups during the reporting period, other activities provided to assist DTSC and/or DOI in support of the Community Outreach Plan (DTSC, 2019) and/or Community Involvement Plan (DOI, 2012), respectively, and anticipated near-term (approximately next six weeks) activities in support of the Community Outreach and Community Involvement Plans.
- Section 2.10 provides information relating to the construction schedule progress, sequencing of activities, information regarding percentage of completion, unresolved delays encountered or anticipated that may affect the future schedule, and a description of efforts made to mitigate those delays or anticipated delays, if any.
- Section 2.11 presents validated data from samples collected as part of the sitewide groundwater monitoring program within 60 days of sample collection, as required by the Condition of Approval # xi in DTSC's approval letter dated August 24, 2018 (DTSC, 2018a).
- Section 3 lists the references cited in this report.

Note that Sections/Tables/Attachments that have no changes since last reporting period, will not appear in the body of the report. This abbreviated reporting format has been implemented since with the March 2024 Monthly Progress Report.

Please note that since activities conducted to comply with the project’s Applicable or Relevant and Appropriate Requirement and the Subsequent Environmental Impact Report (SEIR) (DTSC, 2018b) mitigation measures are currently reported in separate compliance reports, the same information is not repeated in the monthly reports.

2. Monthly Update

2.1 Work Completed

Phase 1 remedy construction, which began on October 2, 2018, includes the National Trail Highway In-situ Reactive Zone (IRZ) with 22 remediation wells (for injection and/or extraction) and a robust network of 75 monitoring wells (for measuring water levels and quality), as well as a network of over 74,000 linear feet of water conveyance piping and 41,000 feet of electrical conduits that connect the remediation wells to the power supply system, the carbon amendment building, and the Remedy-Produced Water Conditioning system. Figures 2-1 and 2-2 show the locations of key areas and wells.

Phase 1 systems and components were integrated and tested to make sure they function properly. On December 22, 2021, PG&E initiated injection of ethanol into the groundwater at select National Trail Highway IRZ wells using temporary power (i.e., portable generator). On March 24, 2022, the permanent power system (from TCS) was put in service. The Remedy-Produced Water Conditioning system inside TCS was fully operational on June 24, 2022. Between March and August 2022, the groundwater remedy experienced intermittent power outages of various durations (the contributing factors, include but are not limited to, TCS operations load shedding [i.e., power to remedy was shut off by TCS due to gas operational reasons] and/or functionality of electrical components). Portable generators were used to supply power from end of August to end of October 2022. The permanent power supply issue was resolved at the end of October 2022. The portable generators were kept onsite temporarily as contingencies and removed from site at the end of January 2023.

Concurrently, after receipt of DTSC’s and DOI’s approvals, PG&E turned off the Interim Measure No. 3 (IM-3) extraction wells (TW-2D and TW-3D) on December 21, 2021, and started to prepare IM-3 for lay-up. The preparation for lay-up was completed on March 21, 2022. PG&E notified the agencies that IM-3 is in lay-up mode on March 22, 2022. When the IM-3 system is in a lay-up condition, the system will be left in a safe, secure, and preserved state and will not operate again until agency approval is received for decommissioning and removal of the system.

Phase 2 remedy construction commenced on March 2, 2022, and includes additional wells (located in Bat Cave Wash [BCW]/TCS, on the Transwestern Bench [TWB], and along historic route 66), and pipelines connecting some of the additional wells as well as a pipeline connecting the previously installed Riverbank (RB) wells. Due to a supply chain issue for vault panels which delays the delivery of those components, a temporary pause of Phase 2A heavy construction activities was planned for mid-June to September 2023. The vault panels were received in August 2023 and installed by October 2023. On August 15, 2023, PG&E informed DTSC and DOI that PG&E intends to extend the pause as PG&E awaits further direction on the Phase 2b design modification proposal submitted to the agencies December 2022.

Below is a summary of activities and work completed in August 2024:

- On July 13, 2018, PG&E sent via email the first weekly six-week look-ahead schedule for the remedy construction field work. The weekly emails provide highlights of field activities in the previous week, field activities scheduled for the next week, and planned activities for the next six weeks. Recipients of the weekly emails are DOI, DTSC, the U.S. Fish and Wildlife Service, the California Regional Water Quality Control Board, Colorado River Basin Region, the Metropolitan Water District of Southern California, Tribes, and the Technical Review Committee. PG&E continues to send these weekly emails to date. As of September 30, 2024, a total of 320 six-week look-ahead schedule emails have been sent. Of those, five six-week look-ahead schedule emails were sent in September 2024 (on September 3, 9, 16, 23, and 30).

- On August 10, 2018, PG&E issued the first Environmental Release to Construct (ERTC) to contractors. As of September 30, 2024, a total of 113 ERTCs (including addenda) and 7 Environmental Release to Operate (ERTO) were issued for construction and operation activities. The ERTCs are listed in Tables 2-1a and 2-1b. The ERTOS are listed in Table 2-1c.

In September 2024, no new ERTO or ERTC was issued for remedy-related activities.

- Starting on October 4, 2018, PG&E has published a daily construction activities list and discussed the list at the morning tailboards with Tribes and agency representatives. This daily list is intended to inform and facilitate observation by Tribes and agency representatives on site on that day. PG&E continues to publish these daily lists and discuss the list at the daily morning tailboards to date. In September 2024, four daily activities list was issued for soil sampling at the flood plain revegetation area.

- In September 2024, PG&E performed the following remedy O&M activities:

- **September 1 to 7 activities:**

- Continued IRZ circulation and ethanol injection O&M activities, including O&M support activities. Example O&M activities include:
 - Process monitoring -- Inspect wells and system areas, adjust operational parameters including extraction and injection well flowrates and ethanol dosing concentrations;
 - Well and system maintenance – Backwash injection wells, chemical and physical rehabilitation of IRZ wells, operate water conditioning system, perform routine preventative maintenance; and
 - General system/site inspection – inspection of access roads and monthly inspection of industrial SWPPP best management practices.

- **September 8 to 14 activities:**

- Continued IRZ circulation and ethanol injection O&M activities, including O&M support activities. See example O&M activities in the first bullet above.
- Completed revegetation monitoring and soil sampling.
- Completed sampling of MW-15.

- **September 15 to 21 activities:**

- Continued IRZ circulation and ethanol injection O&M activities, including O&M support activities. See example O&M activities in the first bullet above.
- Completed revegetation monitoring and weed abatement.

September 22 to 28 activities:

- Continued IRZ circulation and ethanol injection O&M activities, including O&M support activities. See example O&M activities in the first bullet above.

2.2 Freshwater Usage, Waste Generation, and Management

In September 2024, freshwater usage, waste generation, and management are as follows:

2.2.1 Freshwater and Wastewater

- In September 2024, an approximate total of 2,050 gallons of freshwater was used for IRZ wells rehabilitation and 10,146 gallons was used for O&M activities in the revegetation areas.
- For the reporting period, an estimated 25,980 gallons of remedy-produce water (after conditioning) was re-injected into the aquifer. Prior to reinjection, the conditioned water is sampled in accordance with the approved sampling plan in the O&M Plan. Analytical data for remedy-produced water is included in Attachment G. To date, there has been no offsite disposal, or disposal to the PG&E TCS evaporation ponds, of remedy-produced water generated from O&M activities.

2.2.2 Displaced Materials/Soils/Clay

- No displaced materials/soils were generated from remedy activities in September 2024.

2.2.3 General Construction Waste, Sanitary Waste, and Recyclables

- In September 2024, approximately one cubic yard of general waste was generated and hauled to local landfills.
- Sanitary waste from construction trailers/portable toilets is hauled offsite as needed.

2.3 Worker Training and Education

- In September 2024, one site safety training session conducted and one personnel trained in total. In addition, two personnel took the WEAT.

2.4 Status of Work Variance Requests*

No changes to report this month.

2.5 Use of Future Activity Allowance*

No changes to report this month.

2.6 Issues Encountered and Actions Taken to Rectify Issues/Problems*

No changes to report this month.

2.7 Key Personnel Changes*

No changes to report this month.

2.8 Communication with the Public*

- The DTSC community update factsheet was published on September 18, 2024 and sent to project stakeholders, Tribes, and the neighboring public.
- In addition, the 2024 Topock noise notification letter was sent to noise sensitive receptors and Tribes on September 16, 2024.

2.9 Planned Activities for Next Six Weeks

The planned activities for next six weeks (October 6 to November 16, 2024) include the following:

- Continue IRZ O&M including revegetation and maintenance of revegetation area.
- Continue groundwater sampling.
- Continue to conduct inspection of Stormwater Pollution Prevention Plan best management practices, as needed.
- Continue to manage displaced soil per the approved Soil Management Plan, as needed.

Attachment G contains the six-week look-ahead schedule available at this time. Any adjustments to the schedule will occur as needed via the weekly emails (sent at the start of each week) and/or the daily list of construction activities (published daily and discussed with agency and Tribal representatives on site on that day).

2.10 Construction Schedule Review*

No changes to report this month.

2.11 Available Sitewide Groundwater Monitoring Data (DTSC Condition of Approval xi)

Pursuant to Condition of Approval # xi in DTSC's approval letter dated August 24, 2018 (DTSC, 2018a), PG&E is required to report data from samples collected as part of the sitewide groundwater monitoring program within 60 days of sample collection. In compliance with this requirement, PG&E submitted validated data to DTSC via monthly emails. For ease of recordkeeping and to minimize the number of ad-hoc compliance reports/emails, PG&E has included data in each monthly progress report starting with the November 2018 monthly report. The data are included in Attachment G of this report.

2.12 IM-3 Shutdown and Preparation for Layup*

No changes to report this month.

2.13 Summary of Releases Occurred During Groundwater Remedy Construction*

No changes to report this month.

3. References

California Department of Toxic Substances Control (DTSC). 1996. *Corrective Action Consent Agreement (Revised), Pacific Gas and Electric Company's Topock Compressor Station, Needles, California*. EPA ID No. CAT080011729. February 2.

California Department of Toxic Substances Control (DTSC). 2018a. *Acceptance and Conditional Approval of Groundwater Remedy Design and Corrective Measures Implementation Workplan at Pacific Gas and Electric Company, Topock Compressor Station, Needles, California*. April 24.

California Department of Toxic Substances Control (DTSC). 2018b. *Final Subsequent Environmental Impact Report for the Pacific Gas and Electric Company Topock Compressor Station Final Groundwater Remediation Project*. April 24.

California Department of Toxic Substances Control (DTSC). 2019. [Community Outreach Plan, Pacific Gas and Electric Company's Topock Compressor Station, Needles, California](#). May.

CH2M HILL, Inc. (CH2M). 2014. *Final Programmatic Biological Assessment for Pacific Gas and Electric Topock Compressor Station Final Groundwater Remedy*. April 28.

CH2M HILL, Inc. (CH2M). 2015a. *Basis of Design Report/Final (100%) Design Submittal for the Final Groundwater Remedy, PG&E Topock Compressor Station, Needles, California*. November 18.

CH2M HILL, Inc. (CH2M). 2015b. *Construction/Remedial Action Work Plan for the Final Groundwater Remedy, PG&E Topock Compressor Station, Needles, California*. November 18.

United States Department of the Interior (DOI). 2012. [Community Involvement Plan, Pacific Gas and Electric Topock Compressor Station, Needles, California](#). September.

United States Department of the Interior (DOI). 2013. *Remedial Action/Remedial Design Consent Decree (CD) between the United States of America and Pacific Gas & Electric Company*. Case 5:13-cv-00074-BRO-OP, Document 23. Entered November 21.

United States Department of the Interior (DOI). 2018. *Approval of PG&E Topock Compressor Station Remediation Site – Basis of Design Report/Final (100%) Design Submittal and Construction/Remedial Action Work Plan for the Final Groundwater Remedy and the Supplemental and Errata Information for the Final (100%) Design for the Final Groundwater Remedy, PG&E Topock Compressor Station, Needles, California*. Letter from Pamela Innis/DOI to Curt Russell/PG&E. April 3.

Tables

The following tables did not have any updates, and are not included in this monthly report:

Table 2-1a. Summary of Non-Well Environmental Release-To-Constructions

Table 2-1b. Summary of Well Environmental Release-To-Constructions

Table 2-1c. Summary of Environmental Release-To-Operate

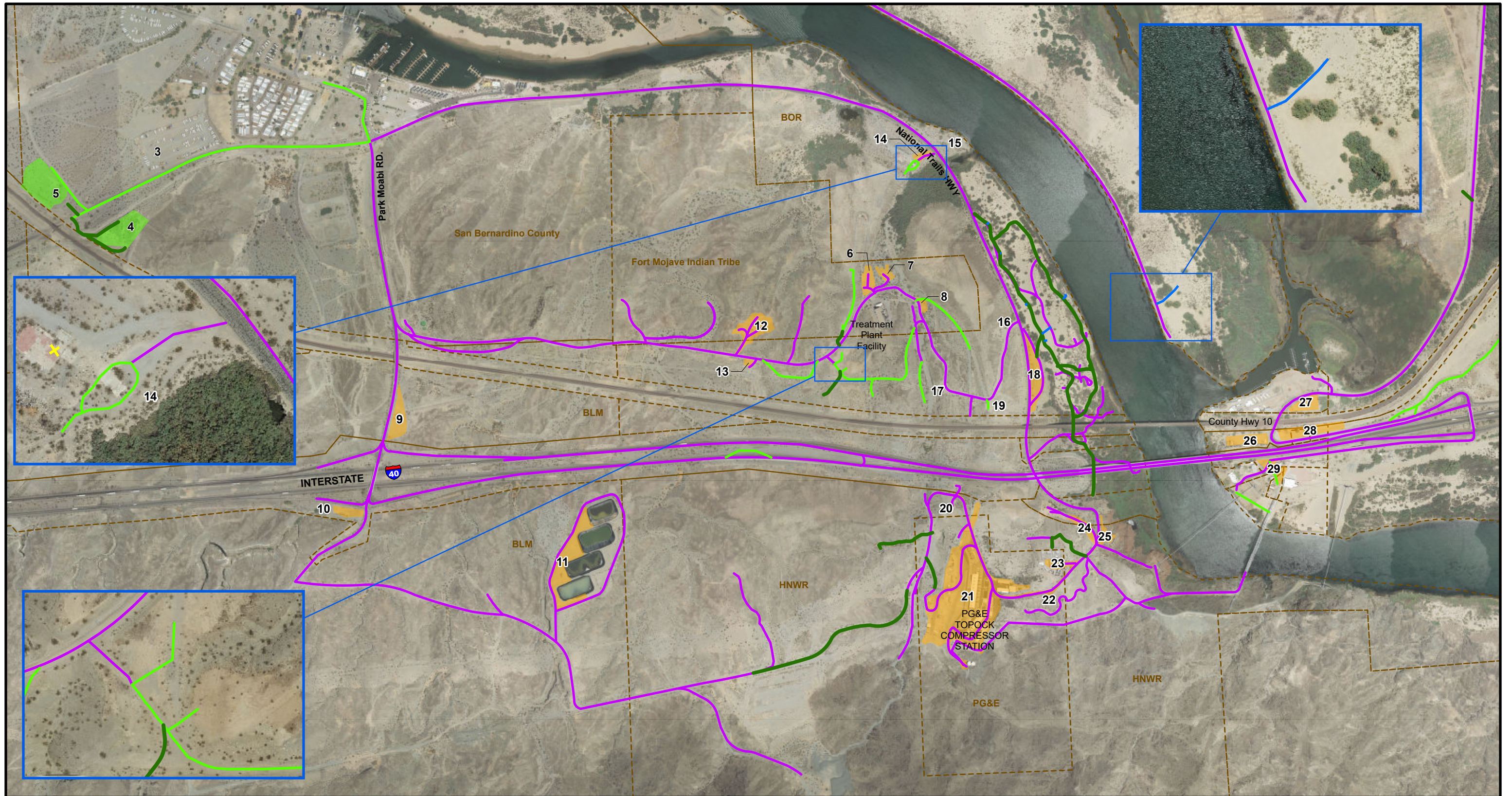
Table 2-2. Monitoring Wells Nomenclature Changes

Table 2-3. Summary of Work Variance Requests

Table 2-4. Summary of Cumulative Percent Completeness of Key Phase 2 Construction Activities

Table 2-5. Summary of Releases Occurred During Groundwater Remedy Construction

Figures

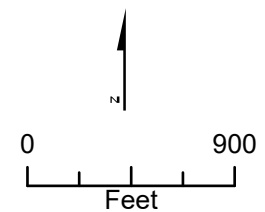


LEGEND

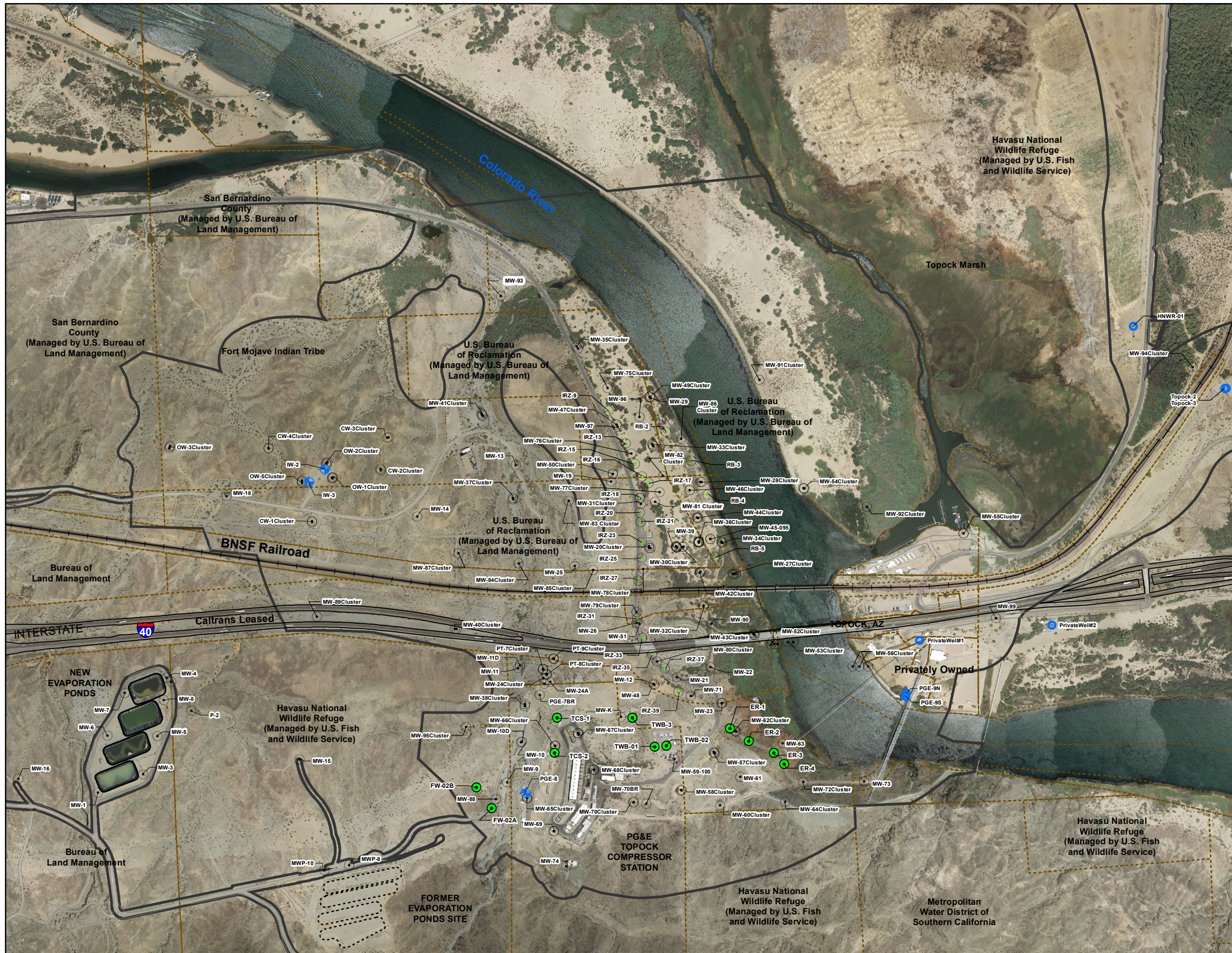
- Existing Access Route (will continue to be used for remedial activities)
- Existing Route (proposed to be used as is for access to remedial activities)
- Roads to be improved or constructed for groundwater remedy
- Temporary Construction Access
- Potential Soil Storage and Staging Area Proposed Staging Areas for Remediation Project
- StagingAreas_90 Proposed Soil Processing (Area #5) and Construction Headquarter (Area #4) for Remediation Project

Notes:

1. Area #3 will not be used as the Construction Headquarter (CHQ). The CHQ will be moved to Area #4.
2. Area #4 will be used as the primary truck inspection area. Areas #9, 18, and 23 or other staging areas might also be used depending on the specific construction activity.
3. Decontamination pads will be located in Area #4 (Construction Headquarters), Area #21 (Topock Compressor Station), and Area #23 (Transwestern Bench).
4. Areas #15, 16, 17, 19, and 20 will not be used as staging areas. Areas #16, 17, and 19 may be part of the primary work zones for remedy infrastructure along the access road.
5. Area #20 may be part of the primary work zone for installation of future provisional well IRL-6 (if determined to be needed in the future) and associated piping/concrete/vault.
6. Public roadways outside of the EIR project area and the APE can also be used for remedy implementation.



**FIGURE 2-1
CONSTRUCTION SITE PLAN
AND ACCESS ROUTES**
GROUNDWATER REMEDY PHASE 1 CONSTRUCTION
PG&E TOPOCK COMPRESSOR STATION,
NEEDLES, CALIFORNIA



- LEGEND
- Project Area
 - Phase 2A Well
 - ⊕ Injection Well
 - Groundwater Monitoring Well
 - Water Supply Well
 - Remediation Well

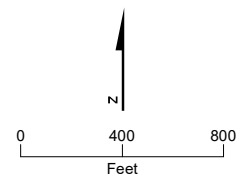


Figure 2-2
Well Locations
 Groundwater Remedy Construction
 PG&E Topock Compressor Station
 Needles, California

Attachments

The following attachments did not have any updates, and are not included in this monthly report:

- A. Photographs
- B. Available Boring and Well Construction Logs, Groundwater Sample Results from Well Drilling, and Well Testing Activities
- C. Soil Sampling Locations and Available Soil Analytical Results
- D. Perimeter Air Sampling Analytical Results
- E. Noise Monitoring Results (SEIR NOISE-2 Requirement)

Attachment F
Six-Week Look-Ahead Schedule

Six-Week Look-Ahead Schedule
 PG&E Topock Compressor Station Remedial Activities

Activity	Sunday	Monday	Tuesday	Wednesday	Thursday	Friday	Saturday
Primary Planned Activities	10/6/2024	10/7/2024	10/8/2024	10/9/2024	10/10/2024	10/11/2024	10/12/2024
Start Time (PST)	6:30 AM	6:30 AM	6:30 AM	6:30 AM	6:30 AM	6:30 AM	6:30 AM
Site Wide Groundwater Sampling G3*, F3*, E4*, F4*, G4*, D5*, E5*, F5*, G5*, D6*, E6*, F6*, & G6*	No Work	Monthly Sampling	Monthly Sampling	Monthly Sampling, River Sampling	Monthly Sampling	No Work	No Work
Site Wide Revegetation F5*	No Work	No Work	No Work	No Work	No Work	No Work	No Work
Primary Planned Activities	10/13/2024	10/14/2024	10/15/2024	10/16/2024	10/17/2024	10/18/2024	10/19/2024
Start Time (PST)	6:30 AM	6:30 AM	6:30 AM	6:30 AM	6:30 AM	6:30 AM	6:30 AM
Site Wide Groundwater Sampling G3*, F3*, E4*, F4*, G4*, D5*, E5*, F5*, G5*, D6*, E6*, F6*, & G6*	No Work	No Work	No Work	No Work	No Work	No Work	No Work
Site Wide Revegetation F5*	No Work	No Work	No Work	No Work	No Work	No Work	No Work
Primary Planned Activities	10/20/2024	10/21/2024	10/22/2024	10/23/2024	10/24/2024	10/25/2024	10/26/2024
Start Time (PST)	6:30 AM	6:30 AM	6:30 AM	6:30 AM	6:30 AM	6:30 AM	6:30 AM
Site Wide Groundwater Sampling G3*, F3*, E4*, F4*, G4*, D5*, E5*, F5*, G5*, D6*, E6*, F6*, & G6*	No Work	No Work	No Work	No Work	No Work	No Work	No Work
Site Wide Revegetation F5*	No Work	No Work	No Work	No Work	Irrigation O&M/Watering	No Work	No Work
Primary Planned Activities	10/27/2024	10/28/2024	10/29/2024	10/30/2024	10/31/2024	11/1/2024	11/2/2024
Start Time (PST)	6:30 AM	6:30 AM	6:30 AM	6:30 AM	6:30 AM	6:30 AM	6:30 AM
Site Wide Groundwater Sampling G3*, F3*, E4*, F4*, G4*, D5*, E5*, F5*, G5*, D6*, E6*, F6*, & G6*	No Work	Quarterly Sampling	Quarterly Sampling	Quarterly Sampling	Quarterly Sampling	Quarterly Sampling	No Work
Site Wide Revegetation F5*	No Work	No Work	No Work	No Work	No Work	No Work	No Work
Primary Planned Activities	11/3/2024	11/4/2024	11/5/2024	11/6/2024	11/7/2024	11/8/2024	11/9/2024
Start Time (PST)	6:30 AM	6:30 AM	6:30 AM	6:30 AM	6:30 AM	6:30 AM	6:30 AM
Site Wide Groundwater Sampling G3*, F3*, E4*, F4*, G4*, D5*, E5*, F5*, G5*, D6*, E6*, F6*, & G6*	No Work	Monthly Sampling	Monthly Sampling	Monthly Sampling	Monthly Sampling	Monthly Sampling	No Work
Site Wide Revegetation F5*	No Work	No Work	No Work	No Work	No Work	No Work	No Work
Primary Planned Activities	11/10/2024	11/11/2024	11/12/2024	11/13/2024	11/14/2024	11/15/2024	11/16/2024
Start Time (PST)	6:30 AM	6:30 AM	6:30 AM	6:30 AM	6:30 AM	6:30 AM	6:30 AM
Site Wide Groundwater Sampling G3*, F3*, E4*, F4*, G4*, D5*, E5*, F5*, G5*, D6*, E6*, F6*, & G6*	No Work	Quarterly Sampling	Quarterly Sampling	Quarterly Sampling	Quarterly Sampling	Quarterly Sampling	No Work
Site Wide Revegetation F5*	No Work	No Work	No Work	No Work	Irrigation O&M/Watering	No Work	No Work



Figure showing a grid superimposed on the Topock site map. Each grid position is denoted by an letter followed by a number.

Attachment G
Groundwater Monitoring Data (DTSC
Condition of Approval xi)

(Groundwater Data Presented in Separate PDF)