



Scott Graunke
Topock Site Project Manager
Environmental Remediation

Topock Compressor Station
145453 National Trails Hwy
Needles, CA 92363

Mailing Address
P.O. Box 337
Needles, CA 92363

442.214.5911
Email: sigx@pge.com

September 10, 2025

Ms. Veronica Dickerson, RSO
Environmental Compliance and Cleanup Division
Office of Environmental Policy and Compliance (OEPC)
US Department of Interior

Mr. Christopher Ioan
California Department of Toxic Substances Control
5796 Corporate Avenue
Cypress, CA 90630

Subject: August 2025 Monthly Progress Report for the Final Groundwater Remedy Construction and Startup, PG&E Topock Compressor Station, Needles, California
(Document ID: TPK_Monthly_Progress_Rpt_August_2025_20250910)

Dear Ms. Dickerson and Mr. Ioan:

In compliance with the *1996 Corrective Action Consent Agreement* (Attachment 6, Part E, Section 9a and Attachment 7) and the *2013 Remedial Design/Remedial Action Consent Decree* (Paragraph 32 and Appendix C, Section 5), and pursuant to the *Construction/Remedial Action Work Plan (C/RAWP)* (Section 2.6.3.1), this monthly report describes activities taken at Pacific Gas and Electric Company's (PG&E's) Topock Compressor Station in August 2025, as well as activities planned for the next six weeks (August 31 to October 11, 2025), and presents available results from sampling and testing, if any, performed in the reporting period.

This report also discusses material deviations from the approved design documents and/or the C/RAWP, if any, that PG&E has proposed to the California Department of Toxic Substances Control (DTSC) and U.S. Department of the Interior (DOI), or that have been approved by DTSC and DOI. This report highlights key personnel changes, if any, and summarizes activities performed and activities planned in support of DOI's 2012 Community Involvement Plan and DTSC's 2019 Community Outreach Plan, as well as contacts with the local community, representatives of the press, and/or public interest groups, if any. This report also includes data from samples collected as part of the sitewide groundwater monitoring program within 60 days of sample collection, as required by the Condition of Approval # xi in DTSC's approval letter dated August 24, 2018.

Please note that since activities conducted to comply with the project's Applicable or Relevant and Appropriate Requirement and the Subsequent Environmental Impact Report mitigation measures are currently reported in separate compliance reports, this information is not repeated in the monthly reports. Monthly progress reports will be submitted to DTSC and DOI by the 10th day of the following month during construction and startup of the groundwater remedy at the Topock Compressor Station which officially began on October 2, 2018. This is the 83rd monthly progress report. Please contact me at (442) 214-5911 if you have any questions or comments regarding this submittal.

Sincerely,

A handwritten signature in black ink that reads 'Scott Graunke'.

Scott Graunke
Topock Site Project Manager

Topock Project Executive Abstract

<p>Document Title: <i>August 2025 Monthly Progress Report for the Groundwater Remedy Construction and Startup, PG&E Topock Compressor Station, Needles, California</i></p> <p>Submitting Agency: DOI, DTSC</p> <p>Final Document? <input checked="" type="checkbox"/> Yes <input type="checkbox"/> No</p>	<p>Date of Document: 09/10/2025</p> <p>Who Created this Document? (i.e. PG&E, DTSC, DOI, Other) PG&E</p>
<p>Priority Status: <input type="checkbox"/> HIGH <input type="checkbox"/> MED <input checked="" type="checkbox"/> LOW</p>	<p>Is this time critical? <input type="checkbox"/> Yes <input checked="" type="checkbox"/> No</p>
<p>Type of Document:</p> <p><input type="checkbox"/> Draft <input checked="" type="checkbox"/> Report <input type="checkbox"/> Letter <input type="checkbox"/> Memo</p> <p><input type="checkbox"/> Other / Explain:</p>	<p>Action Required:</p> <p><input checked="" type="checkbox"/> Information Only <input type="checkbox"/> Review and Input</p> <p><input type="checkbox"/> Other / Explain:</p>
<p>What does this information pertain to?</p> <p><input type="checkbox"/> Resource Conservation and Recovery Act (RCRA) Facility Assessment (RFA)/Preliminary Assessment (PA)</p> <p><input type="checkbox"/> RCRA Facility Investigation (RFI)/Remedial Investigation (including Risk Assessment)</p> <p><input type="checkbox"/> Corrective Measures Study (CMS)/Feasibility Study (FS)</p> <p><input checked="" type="checkbox"/> Corrective Measures Implementation/Remedial Action (RA)</p> <p><input type="checkbox"/> California Environmental Quality Act/ Environmental Impact Report (EIR)</p> <p><input type="checkbox"/> Interim Measures</p> <p><input type="checkbox"/> Other / Explain:</p>	<p>Is this a Regulatory Requirement?</p> <p><input checked="" type="checkbox"/> Yes</p> <p><input type="checkbox"/> No</p> <p>If no, why is the document needed?</p>
<p>What is the consequence of NOT doing this item? What is the consequence of DOING this item?</p> <p>The consequence for not doing this item is PG&E will be out of compliance with the 1996 Corrective Action Consent Agreement (CACA) and the 2013 Remedial Design/ Remedial Action Consent Decree (CD), as well as the Construction/Remedial Action Work Plan (C/RAWP).</p>	<p>Other Justification/s:</p> <p><input type="checkbox"/> Permit <input type="checkbox"/> Other / Explain:</p>
<p>Brief Summary of attached document:</p> <p>This monthly report describes activities taken in August 2025 as well as activities planned for the next six weeks (August 31 to October 11, 2025) and presents available results from sampling and testing in the reporting period. In addition, this report discusses material deviations from the approved design documents and/or the <i>Construction/ Remedial Action Work Plan (C/RAWP)</i>, if any, that PG&E has proposed to the California Department of Toxic Substances Control (DTSC) and the U.S. Department of the Interior (DOI) or that have been approved by DTSC and DOI. This report also highlights key personnel changes, if any, and summarizes activities performed and activities planned at the Topock Compressor Station in support of DOI's 2012 Community Involvement Plan and DTSC's 2019 Community Outreach Plan, as well as contacts with local community, representatives of the press, and/or public interest groups, if any.</p> <p>Written by: Pacific Gas and Electric Company</p>	
<p>Recommendations:</p> <p>Provide input to PG&E.</p>	
<p>How is this information related to the Final Remedy or Regulatory Requirements:</p> <p>This submittal is required in compliance with the CACA, CD, and pursuant to the C/RAWP.</p>	
<p>Other requirements of this information?</p> <p>None.</p>	



August 2025
Monthly Progress Report for the
Final Groundwater Remedy Construction and Startup

PG&E Topock Compressor Station
Needles, California

Document ID: TPK_Monthly_Progress_Rpt_August_20250910

September 2025

Prepared for
U.S. Department of the Interior and California Department of Toxic Substances Control

On Behalf of
Pacific Gas and Electric Company



Contents¹

Topock Project Executive Abstract	iii
Acronyms and Abbreviations	ix
1. Introduction	1
2. Monthly Update	2
2.1 Work Completed	2
2.2 Freshwater Usage, Waste Generation, and Management	4
2.2.1 Freshwater and Wastewater	5
2.2.2 Displaced Materials/Soils/Clay	5
2.2.3 General Construction Waste, Sanitary Waste, and Recyclables	5
2.3 Worker Training and Education	5
2.4 Status of Work Variance Requests*	5
2.5 Use of Future Activity Allowance*	6
2.6 Issues Encountered and Actions Taken to Rectify Issues/Problems	6
2.7 Key Personnel Changes*	6
2.8 Communication with the Public*	6
2.9 Planned Activities for Next Six Weeks	6
2.10 Construction Schedule Review	7
2.11 Available Sitewide Groundwater Monitoring Data (DTSC Condition of Approval xi)	7
2.12 IM-3 Shutdown and Preparation for Layup*	7
2.13 Summary of Releases Occurred During Groundwater Remedy Construction	7
3. References	7

Tables

- 2-1a. Summary of Non-Well Environmental Release-To-Constructions*
- 2-1b. Summary of Well Environmental Release-To-Constructions
- 2-1c. Summary of Environmental Release-To-Operate*
- 2-2. Monitoring Wells Nomenclature Changes*
- 2-3. Summary of Work Variance Requests*
- 2-4. Summary of Cumulative Percent Completeness of Key Phase 2b Construction Activities
- 2-5. Summary of Releases Occurred During Groundwater Remedy Construction

Figures

- 2-1 Construction Site Plan and Access Routes
- 2-2 Phase 2b Well Locations

Attachments

- A Photographs
- B Available Boring and Well Construction Logs, Groundwater Sample Results from Well Drilling, and Well Testing Activities
- C Soil Sampling Locations and Available Soil Analytical Results
- D Perimeter Air Sampling Analytical Results*
- E Noise Monitoring Results (SEIR NOISE-2 and NOISE-3 Requirement)
- F Six-Week Look-Ahead Schedule
- G Groundwater Monitoring Data (DTSC Condition of Approval xi)

¹ Sections/Tables/Attachments denoted with * have no changes since last reporting period. They will not appear in the body of the report. This abbreviated reporting format has been implemented since the March 2024 Monthly Progress Report.

Acronyms and Abbreviations

Acronym	Definition
AOC	area of concern
CACA	Corrective Action Consent Agreement
C/RAWP	Construction/Remedial Action Work Plan
CD	Consent Decree
DOI	United States Department of the Interior
DTSC	California Department of Toxic Substances Control
ERTC	Environmental Release to Construct
IM-3	Interim Measure No. 3
IRZ	in-situ reactive zone
O&M	operations and maintenance
PG&E	Pacific Gas and Electric Company
RCRA	Resource Conservation and Recovery Act
SEIR	Subsequent Environmental Impact Report
TCS	Topock Compressor Station

1. Introduction

Pacific Gas and Electric Company (PG&E) is implementing the final groundwater remedy to address chromium in groundwater near the PG&E Topock Compressor Station (TCS), located in eastern San Bernardino County 15 miles southeast of the city of Needles, California. The U.S. Department of the Interior (DOI) is the lead federal agency overseeing remedial actions at the TCS. PG&E and the United States executed a Remedial Design/Remedial Action Consent Decree (CD), on behalf of the DOI, under the Comprehensive Environmental Response, Compensation, and Liability Act in 2012, which was approved by the U.S. District Court for the Central District of California in November 2013 (DOI, 2013). Paragraph 32 and Appendix C (Section 5) of the CD requires PG&E to submit to DOI monthly electronic progress reports during construction of the remedial action, and to submit progress reports on a quarterly basis after the selected remedy has been implemented and demonstrated to be operating as intended.

The California Department of Toxic Substances Control (DTSC) is the lead state agency overseeing corrective actions at the TCS. Remedial activities are being performed in conformance with the requirements of the Resource Conservation and Recovery Act Corrective Action pursuant to a Corrective Action Consent Agreement (CACA) entered into by PG&E and the DTSC in February 1996 (DTSC, 1996). Attachment 6, Part E, Section 9a and Attachment 7 of the CACA require PG&E to provide certain information in monthly progress reports during construction of the corrective action.

In compliance with the CACA and CD requirements, PG&E proposed a template for the monthly progress reports in Exhibit 2.6-2 of the Construction/Remedial Action Work Plan (C/RAWP) (CH2M, 2015b). The C/RAWP was approved by DOI on April 3, 2018 (DOI, 2018) and DTSC on April 24, 2018 (DTSC, 2018a).

This is the 83rd of the monthly progress reports that will be submitted to DOI and DTSC for the duration of the remedy construction and startup. This monthly progress report documents activities during August 2025 and follows the content and format described in Exhibit 2.6-2 of the approved C/RAWP. The report is organized as follows:

- Sections 2.1 through 2.7 describe completed construction activities; data collected, generated or received; nature and volume of waste generated; waste handling/disposal; issues encountered; actions taken to rectify problems/issues; personnel changes; and Work Variance Requests (i.e., material deviations from the design documents, the C/RAWP, or other approved work plans), if any, as well as agencies' actions on those requests, and potential schedule impacts.
- Sections 2.8 through 2.9 summarize key project personnel changes, if any, contacts with representatives of the press, local community, or public interest groups during the reporting period, other activities provided to assist DTSC and/or DOI in support of the Community Outreach Plan (DTSC, 2019) and/or Community Involvement Plan (DOI, 2012), respectively, and anticipated near-term (approximately next six weeks) activities in support of the Community Outreach and Community Involvement Plans.
- Section 2.10 provides information relating to the construction schedule progress, sequencing of activities, information regarding percentage of completion, unresolved delays encountered or anticipated that may affect the future schedule, and a description of efforts made to mitigate those delays or anticipated delays, if any.
- Section 2.11 presents validated data from samples collected as part of the sitewide groundwater monitoring program within 60 days of sample collection, as required by the Condition of Approval # xi in DTSC's approval letter dated August 24, 2018 (DTSC, 2018a).
- Section 3 lists the references cited in this report.

Note that Sections/Tables/Attachments that have no changes since last reporting period, will not appear in the body of the report. This abbreviated reporting format has been implemented since with the March 2024 Monthly Progress Report.

Please note that since activities conducted to comply with the project's Applicable or Relevant and Appropriate Requirement and the Subsequent Environmental Impact Report (SEIR) (DTSC, 2018b) mitigation measures are currently reported in separate compliance reports, the same information is not repeated in the monthly reports.

2. Monthly Update

2.1 Work Completed

In August 2025, PG&E performed the following construction activities (note that Figures 2-1 and 2-2 show the construction access routes/staging areas and Phase 2b wells, respectively, and Table 2-2 presents the changes in well nomenclature):

- **Attachment A** includes select photos of activities during this reporting period. **Attachment B** includes available vertical aquifer sample results during well drilling.
- On July 13, 2018, PG&E sent via email the first weekly six-week look-ahead schedule for the remedy construction field work. The weekly emails provide highlights of field activities in the previous week, field activities scheduled for the next week, and planned activities for the next six weeks. Recipients of the weekly emails are DOI, DTSC, the U.S. Fish and Wildlife Service, the California Regional Water Quality Control Board, Colorado River Basin Region, the Metropolitan Water District of Southern California, Tribes, and the Technical Review Committee. PG&E continues to send these weekly emails to date. As of August 31, 2025, a total of 369 six-week look-ahead schedule emails have been sent. Of those, five six-week look-ahead schedule emails were sent in August 2025 (on August 3, 10, 18 [revised], 24, and 31).

- On August 10, 2018, PG&E issued the first Environmental Release to Construct (ERTC) to contractors. As of August 31, 2025, a total of 121 ERTCs (including addenda) and 10 Environmental Release to Operate (ERTOs, including addenda) were issued for construction and operation activities. The ERTCs are listed in Tables 2-1a and 2-1b. The ERTOs are listed in Table 2-1c.

No new ERTC was issued in August 2025. However, based on the FMIT's input received during the August 7 pre-work field review, a revised ERTC #5bc figure was issued on August 12 to exclude portions of three mature plants shown in the original ERTC figure.

No new ERTO was issued in August 2025.

- Starting on October 4, 2018, PG&E has published a daily construction activities list and discussed the list at the morning tailboards with Tribes and agency representatives. This daily list is intended to inform and facilitate observation by Tribes and agency representatives on site on that day. PG&E continues to publish these daily lists and discuss the list at the daily morning tailboards to date. Twenty-two daily activity lists were issued in August 2025.
- In August 2025, the following remedy construction and O&M activities were scheduled:
 - July 27 to August 2 activities:
 - Continued IRZ circulation and ethanol injection O&M activities, including reveg and O&M support activities. Example O&M activities include:
 - Process monitoring -- Inspect wells and system areas, adjust operational parameters including extraction and injection well flowrates and ethanol dosing concentrations;
 - Well and system maintenance -- Backwash injection wells, chemical and physical rehabilitation of IRZ wells, operate water conditioning system, perform routine preventative maintenance; and
 - General system/site inspection -- inspection of access roads and monthly inspection of industrial SWPPP best management practices.
 - Continued MWAA/102 site setup and drilling

- Continued MW-BB drilling site preparation
- Continued C18 Pipeline Installation
- August 3 to 9 activities:
 - Continued IRZ circulation and ethanol injection O&M activities, including reveg and O&M support activities. See example O&M activities in the first bullet above.
 - Completed MW-BB/103 drilling site preparation.
 - Continued MWAA/102 site setup and drilling
 - Started MW-FF, MW-GG, and IRL-4 Drilling Site Preparation
 - Conducted MW-JJ Pre work Field Review
 - Continued C18 Pipeline Installation
- August 10 to 16 activities:
 - Continued IRZ circulation and ethanol injection O&M activities, including reveg and O&M support activities. See example O&M activities in the first bullet above.
 - Continuing Monthly Groundwater Sampling Sitewide
 - Begin MW-J Drilling Site Preparation
 - Continued C18 Pipeline Installation
 - Completed MW-AA/102 site setup
 - Completed MW-FF drilling site preparation
 - Completed MW-GG drilling site preparation
 - Continued IRL-4 drilling site preparation
- August 17 to 23 activities:
 - Continued IRZ circulation and ethanol injection O&M activities, including reveg and O&M support activities. See example O&M activities in the first bullet above.
 - Continued monthly groundwater sampling sitewide.
 - Completed MW-J drilling site preparation
 - Continued C18 pipeline installation
 - Completed MW-AA/102S drilling
 - Started MW-BB/103 mobilization and site setup
 - Started MW-I/100 well development site setup
 - Started MW-P/101 mobilization and site setup
 - Started MW-JJ drilling site preparation
- August 24 to 30 activities:
 - Continued IRZ circulation and ethanol injection O&M activities, including reveg and O&M support activities. See example O&M activities in the first bullet above.
 - Continued monthly groundwater sampling sitewide.
 - Completed IRL-1 drilling site preparation.
 - Completed FW-01 drilling site preparation.
 - Continued MW-JJ drilling Site preparation.
 - Began MW-P/101 drilling.

- Began MW-BB/103 drilling.
- Continued MW-I/100 development.
- Continued C18 pipeline Installation.
- Begin MW-AA/102 development and site setup.
- Remedy Baseline/Opportunistic Soil Sampling:
Pursuant to the Baseline Soil Sampling and Analysis Plan (Appendix A of the Soil Management Plan [SMP] [which is Appendix L of the C/RAWP]), a total of four baseline soil samples was collected at the bottom of Pipeline C18 trench in July 24, August 7, 8, and 12, 2025.
See **Attachment C** for information about soil sampling locations and soil analytical results that are available at this time.
- Fugitive Dust Monitoring:
 - Twenty observations for fugitive dust were made during periodic inspection of construction activities. No visible dust was observed outside of the work areas.
 - Two each of the Aeroquals continuous dust monitors are located at the SPY and in the floodplain at MW-JJ work area. On August 23, 2025, one temporary exceedance of the 100 micrograms per cubic meter ($\mu\text{g}/\text{m}^3$) alarm occurred at one of the Aeroquals in the MW-JJ work area. This exceedance appears to be caused by vegetation removal and grading of the MW-JJ access road.

There is no update to **Attachment D** (Perimeter Air Sampling Analytical Results) to report this month.

- Noise Monitoring (the following are highlights; details are in **Attachment E**):
 - Fourteen events at the pre-approved location west of the mobile home park at Moabi Regional Park. Construction activities closest to this monitoring location include soil management activities at the SPY and Construction Headquarters (CHQ), as well as traffic on NTH. The sound level typically varied between 43 and 62 dBA, with an average and median of 48-49 dBA.
 - Four events at the pre-approved location near the UHR-1 mitigation planting area, off National Trails Highway (NTH). In August 2025, construction-related activity closest to this monitoring location is primarily construction activities associated with MW-JJ access road and drill pad preparation, and construction traffic on NTH. The sound level typically varied between 43 and 56 dBA, with an average and median of 50 dBA.
 - Sixteen events at the pre-approved location near and at the same elevation as Maze C. Construction activities closest to this monitoring location are associated with site preparation and drilling at MW-101 (former MW-P), MW-102 (former MW-AA), and MW-103 (former MW-BB), well development at MW-100 (former MW-I), and well support activities at Staging Area 6. The sound level typically varied between 43 and 71 dBA, with an average and median of 55 dBA. The maximum sound level was recorded during a high wind event.

Due to close proximity of MW-100, MW-101, and MW-102 to this pre-approved monitoring location, sound curtain was erected during drilling/development activities at these locations.

2.2 Freshwater Usage, Waste Generation, and Management

In August 2025, freshwater usage, waste generation, and management are as follows:

2.2.1 Freshwater and Wastewater

- In August 2025, an approximate total of 2,800 gallons of freshwater was used for IRZ wells rehabilitation, 206 gallons was used for O&M activities in the revegetation areas, 64,000 gallons for well drilling and drilling support, and 240,500 gallons was used for dust control during remedy construction.
- For the reporting period, an estimated 75 gallons of drilling wastewater was sent to the TCS evaporation pond #4. In addition, an estimated 34,110 gallons of remedy-produced water (after conditioning) was re-injected into the aquifer. Prior to reinjection, the conditioned water is sampled in accordance with the approved sampling plan in the O&M Plan. Analytical data for remedy-produced water is included in Attachment G. To date, there has been no offsite disposal, or disposal to the PG&E TCS evaporation ponds, of remedy-produced water generated from O&M activities.

2.2.2 Displaced Materials/Soils/Clay/Sludge

- Since the start of Phase 2b remedy construction in late March 2025, an approximate 3,426 cubic yards of excess soils/materials (excluding spills/releases) were generated from construction activities. Of those, in August 2025 about 105 cubic yards were generated from excavation in the East Ravine for Pipeline C18 installation, and 11 cubic yards were generated from well drilling. The excavated material from East Ravine (C18) was transported to the Soil Processing Yard, stockpiled in two separate piles (one for soil from PG&E property and one for soil from the Refuge), and will be managed in accordance with the Remedy Soil Management Plan.
- Less than 1 gallon of sludge was generated from IRZ well rehabilitation in August 2025. The rehab sludge is accumulated in the waste accumulation area at the MW-20 Bench.

2.2.3 General Construction Waste, Sanitary Waste, and Recyclables

- In August 2025, approximately 16 cubic yards of general waste was generated and hauled to local landfills. No spent filters were generated from PTI-1D.
- Sanitary waste from construction trailers/portable toilets is hauled offsite as needed.

2.3 Worker Training and Education

- In August 2025, nine safety training sessions were held and a total of sixteen personnel trained. In addition, sixteen personnel took the WEAT.

2.4 Status of Work Variance Requests

- On May 22, 2025, PG&E submitted to DTSC and DOI the proposed Work Variance Request (WVR) #15 to modify the IRL-4 access road for dual rotary rig access and incorporation of a pre-cast concrete retaining wall for better protection against stormwater erosion. DTSC forwarded the draft WVR to Tribes and stakeholders on the same day and requested input, if any, by June 27, 2025. A site walk was conducted on June 16, 2025 to discuss the WVR and view the proposed retaining wall location. The WVR was also discussed at the June 18, 2025 Consultative Work Group (CWG) and Technical Work Group (TWG) meetings.

The Chemehuevi Indian Tribe, Fort Yuma Quechan Tribe, and Cocopah Indian Tribe provided comments on June 27, 2025. The Fort Mojave Indian Tribe provided comments under Section 106 consultation on June 26, 2025, and to Topock Remediation Project stakeholders on August 14, 2025. DTSC provided comments on July 25, 2025. PG&E is preparing responses to comments received on WVR #15.

No changes to Table 2-3 Summary of Work Variance Requests to report this month.

2.5 Use of Future Activity Allowance*

No changes to report this month.

2.6 Issues Encountered and Actions Taken to Rectify Issues/Problems

The following key issue was encountered and is being resolved:

- During the April 3, 2025 pre-work field review for the remaining upland wells, the FMIT raised a concern about the location of well MW-DD and its planned work area, and requested a discussion with the agencies prior to drilling of this well. BLM, DOI, DTSC, and BOR met with Tribes on April 29, 2025. Agencies met with PG&E on May 1 to discuss alternative locations for MW-DD. DTSC requested a written explanation as to why arsenic monitoring wells MW-DD and MW-EE cannot be placed in the vicinity of the IM-3 access road. PG&E provided a response on May 29, 2025.

A site walk was conducted on June 16, 2025 to view and discuss the alternate location of MW-DD on the IM3 access road. Alternate locations for MW-DD were also discussed at the June 18, 2025 TWG meeting. On July 7, 2025, DTSC directed PG&E to prepare figures illustrating the footprint/work area boundaries for both well MW-DD as proposed in the 2015 BOD as well as the MW-DD location in the IM3 access road that was walked and observed on June 16, 2025. PG&E provided a response on July 29, 2025. On August 4, 2025, DTSC provided a response to PG&E's July 29 letter and directed PG&E to install MW-DD on the IM3 access and to submit a Work Variance Request to move MW-DD from the original BOD location.

2.7 Key Personnel Changes*

No changes to report this month.

2.8 Communication with the Public*

No changes to report this month.

2.9 Planned Activities for Next Six Weeks

The planned activities for next six weeks (August 31 to October 11, 2025) include the following:

- Continue IRZ O&M including revegetation and maintenance of revegetation area.
- Continue groundwater and river sampling.
- Complete Pipeline C18 installation.
- Complete MW-JJ site preparation.
- Start FW-01, IRL-04, and MW-Q drilling.
- Complete drilling at MW-101 (former MW-P) and MW-103 (former MW-BB).
- Start well pad preparation for MW-CC.
- Conduct well development.
- Conduct Phase 2B Pipelines Project Initiation Meeting on September 11, 2025.
- Conduct Pre-Work Field Review for Pipeline B California construction on September 17, 2025.
- Continue to conduct inspection of Stormwater Pollution Prevention Plan best management practices, as needed.

- Continue to manage displaced soil per the approved Soil Management Plan, as needed.

Attachment G contains the six-week look-ahead schedule available at this time. Any adjustments to the schedule will occur as needed via the weekly emails (sent at the start of each week) and/or the daily list of construction activities (published daily and discussed with agency and Tribal representatives on site on that day).

2.10 Construction Schedule Review

Table 2-4 summarizes the percent completeness for key Phase 2b construction activities, as of August 31, 2025. In addition, the latest project schedule including remedy construction can be downloaded [here](#) on the project website.

2.11 Available Sitewide Groundwater Monitoring Data (DTSC Condition of Approval xi)

Pursuant to Condition of Approval # xi in DTSC's approval letter dated August 24, 2018 (DTSC, 2018a), PG&E is required to report data from samples collected as part of the sitewide groundwater monitoring program within 60 days of sample collection. In compliance with this requirement, PG&E submitted validated data to DTSC via monthly emails. For ease of recordkeeping and to minimize the number of ad-hoc compliance reports/emails, PG&E has included data in each monthly progress report starting with the November 2018 monthly report. The data are included in Attachment G of this report.

2.12 IM-3 Shutdown and Preparation for Layup*

No changes to report this month.

2.13 Summary of Releases Occurred During Groundwater Remedy Construction

At the request of DTSC, a summary of releases (or spills) that occurred outside of containment and onto ground is provided in Table 2-5. The summary provides information about each release including date, location of release, type of material released, amount of material released (if known), and associated cleanup activities.

3. References

California Department of Toxic Substances Control (DTSC). 1996. *Corrective Action Consent Agreement (Revised), Pacific Gas and Electric Company's Topock Compressor Station, Needles, California*. EPA ID No. CAT080011729. February 2.

California Department of Toxic Substances Control (DTSC). 2018a. *Acceptance and Conditional Approval of Groundwater Remedy Design and Corrective Measures Implementation Workplan at Pacific Gas and Electric Company, Topock Compressor Station, Needles, California*. April 24.

California Department of Toxic Substances Control (DTSC). 2018b. *Final Subsequent Environmental Impact Report for the Pacific Gas and Electric Company Topock Compressor Station Final Groundwater Remediation Project*. April 24.

California Department of Toxic Substances Control (DTSC). 2019. [Community Outreach Plan, Pacific Gas and Electric Company's Topock Compressor Station, Needles, California](#). May.

CH2M HILL, Inc. (CH2M). 2014. *Final Programmatic Biological Assessment for Pacific Gas and Electric Topock Compressor Station Final Groundwater Remedy*. April 28.

CH2M HILL, Inc. (CH2M). 2015a. *Basis of Design Report/Final (100%) Design Submittal for the Final Groundwater Remedy, PG&E Topock Compressor Station, Needles, California*. November 18.

CH2M HILL, Inc. (CH2M). 2015b. *Construction/Remedial Action Work Plan for the Final Groundwater Remedy, PG&E Topock Compressor Station, Needles, California*. November 18.

United States Department of the Interior (DOI). 2012. [Community Involvement Plan, Pacific Gas and Electric Topock Compressor Station, Needles, California](#). September.

United States Department of the Interior (DOI). 2013. *Remedial Action/Remedial Design Consent Decree (CD) between the United States of America and Pacific Gas & Electric Company*. Case 5:13-cv-00074-BRO-OP, Document 23. Entered November 21.

United States Department of the Interior (DOI). 2018. *Approval of PG&E Topock Compressor Station Remediation Site – Basis of Design Report/Final (100%) Design Submittal and Construction/Remedial Action Work Plan for the Final Groundwater Remedy and the Supplemental and Errata Information for the Final (100%) Design for the Final Groundwater Remedy, PG&E Topock Compressor Station, Needles, California*. Letter from Pamela Innis/DOI to Curt Russell/PG&E. April 3.

Tables

The following tables did not have any updates, and are not included in this monthly report:

- 2-1a. Summary of Non-Well Environmental Release-To-Constructions
- 2-1c. Summary of Environmental Release-To-Operate
- 2-2. Monitoring Wells Nomenclature Changes
- 2-3. Summary of Work Variance Requests

Table 2-1b. Summary of Well Environmental Release-To-Constructions*August 2025 Monthly Progress Report for the Final Groundwater Remedy Construction and Startup**PG&E Topock Compressor Station, Needles, California*

ERTC Number ^[a]	Brief Description of Covered Areas and Scope of Authorized Activities	Original Issue Date
5aq	Scope included the site preparation for and drilling of freshwater injection well FW-2 along the access road to Bat Cave Wash.	February 22, 2022
5ar	Scope included the site preparation at the TW Bench for drilling of wells TWB-1 and TWB-2.	February 23, 2022
Amendment 1 to ERTC 5ar	Scope included the drilling of extraction wells TWB-1 and TWB-2 on the Transwestern Bench.	March 13, 2022
Amendment 2 to ERTC 5ar	Scope included installation of an office trailer and associated utility services at the Transwestern Bench.	May 11, 2023
5at	Scope included the site preparation for and drilling of extraction wells TCS-1 and TCS-2 inside the Compressor Station.	March 18, 2022
5as	Scope included the site preparation for and drilling of extraction wells ER-1 and ER-2 along historic route 66.	March 14, 2022
Addendum 1 to ERTC 5as	Scope included the 48-hour aquifer tests at extraction wells ER-1 and ER-2.	October 26, 2022
5au	Scope included the site preparation for and drilling of extraction well TWB-3.	April 21, 2022
Addendum 1 to ERTC 5aq	Scope included the site preparation for and drilling of FW-02B (also known as FW-2A' or FW-2Alt').	August 16, 2022
Addendum 2 to ERTC 5ah ^[b]	Scope included the re-establishment of a walking path for safe access to well MW-V (also called MW-95) for groundwater sampling.	Renewed April 18, 2023 for storm erosion repair work (originally issued on November 21, 2022)
5ay	Scope included the site preparation for and installation of extraction wells ER-3 and ER-4.	February 27, 2023
5ax	Scope included the repair of MW-11S well pad.	March 1, 2023
5az	Scope included the replacement of well MW-30-30 and installation of new monuments at MW-30-30, MW-30-50, ER-3, and ER-4.	October 5, 2023
Addendum 2 to ERTC 5s	Scope included the relocation of in-vault power and controls equipment to aboveground panels on stanchion with a sunshade at IRZ-39.	November 6, 2024
5ba	Scope included site preparation, well drilling, well installation, and well testing at IRL-2, IRL-3, and MW-I	March 14, 2025
5bb	Scope included site preparation, well drilling, well installation, and well testing at remaining upland wells	April 14, 2025
5bc	Scope included site access road construction, well site preparation, well drilling/ installation/testing at MW-JJ in north floodplain.	July 31, 2025 Revised August 12, 2025 to exclude portions of three mature plants shown in the July 31 ERTC figure.

^[a] For brevity and readability, the Well ERTCs issued for Phase 1 construction are not listed in this report. For a complete list of those ERTCs, please Table 2-1a of the February 2022 Monthly Progress Report. The monthly progress reports can be accessed via the [Project website](#).

^[a] Renewed ERTC for re-establishing access to MW-V.

ERTC = Environmental Release-To-Construction

TCS = Topock Compressor Station

Table 2-4. Summary of Cumulative Percent Completeness of Key Phase 2b Construction Activities
August 2025 Monthly Progress Report for the Final Groundwater Remedy Construction and Startup
PG&E Topock Compressor Station, Needles, California

Key Activity	% Complete	Cumulative Status of Phase 2b Construction Activities (as of August 31, 2025)
Remediation Well* Installation	10%	Pilot holes for FW-01, IRL-01, IRL-02, and IRL-03 have been drilled and temporarily backfilled..
Remediation Well Downhole Installation	0%	
Monitoring Well** Installation	10%	<ul style="list-style-type: none"> ▪ MW-100 (former MW-I) wells (four total) have been installed. ▪ MW-102D (former MW-AA) wells (three total) have been installed. ▪ MW-103D (formerly MW-BB) drilling and installation on going. ▪ MW-101D (formerly MW-P) drilling and installation on going. ▪ MW-100-232 (formerly MW-I) well development completed. ▪ MW-100-302 (formerly MW-I) well development completed.
C18 Pipeline Installation - California	60%	<ul style="list-style-type: none"> ▪ Mobilization has been completed ▪ Site setup and utility location has been completed ▪ HDPE and conduit trench excavation has been completed ▪ HDPE and conduit trench subgrade preparation and compaction has been completed. ▪ HDPE force main has been started. ▪ Conduit and pull box installation has been started.
Pipeline A Installation – California	0%	
Other Remedy Infrastructure Installation - California	0%	
Pipeline B Installation - Arizona	0%	
Other Remedy Infrastructure Installation - Arizona	0%	
Remedy Electrical Work	0%	

Notes:

* Phase 2b remediation wells include FW-01, IRL-1, IRL-2, IRL-3, and IRL-4.

** Phase 2b monitoring wells include MW-P, MW-Q, MW-AA, MW-BB, MW-CC, MW-DD, MW-FF, MW-GG, and MW-JJ.

Table 2-5. Summary of Releases Occurred During Groundwater Remedy Construction and Startup
August 2025 Monthly Progress Report for the Final Groundwater Remedy Construction and Startup
PG&E Topock Compressor Station, Needles, California

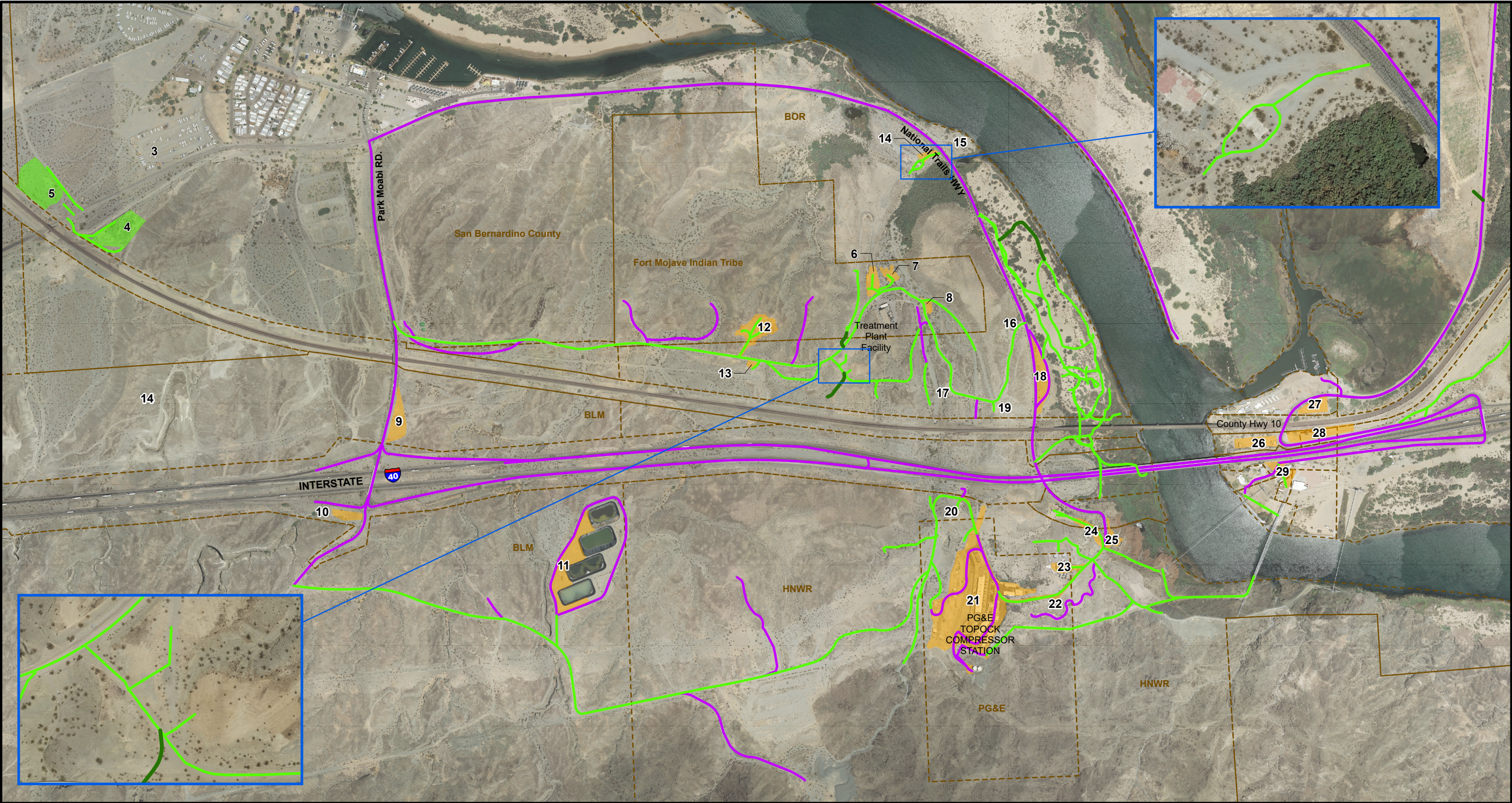
Date Release Identified ^[a]	Release Location	Description of Release	Material Released Outside of Containment	Approximate Volume of Material Released	Cleanup Action	Corrective Action To Prevent Re-Occurrence
8/20/25	MW-101 (former MW-P)	A release of hydraulic oil occurred when gasket on the rig hydraulic actuator failed.	Hydraulic fluid	About 2 gallons	Although most of the released fluid landed on the secondary containment under the rig, droplets of oil were observed sparingly on the AB material at the drill pad, and nearby tank/equipment. No impacts to the ground below the AB were observed. After the impacted AB was removed and inspected by the onsite Archaeologist, it was transported to the waste accumulation area at the MW-20 Bench.	In the morning tailgates, crews will continue to discuss conducting 360 walkarounds to identify hydraulic releases that may occur during drilling operations.
8/19/25	National Trails Highway (NTH)	A release of hydraulic oil occurred from a sonic drill rig during its transport on NTH.	Hydraulic fluid	About 2 gallons	Absorbent pads were used to absorb any oil sheens.	Crews in rear escort vehicles will be reminded to identify issues early.
7/27/25	CHQ	A release of hydraulic fluid from a loose/unsecured hydraulic hose during transportation of a street sweeper on a skip loader across the CHQ.	Hydraulic fluid	Unknown – about 70 feet of impacted rocks was visible.	Impacted rocks and soils were removed and containerized in 5-gallon buckets. A sample of the impacted soil was collected and sent to lab.	Crews will discuss in the daily tailgate meetings reminders to conduct 360 walkarounds, as well as the responsibility of each team member to confirm that equipment must be properly secured before moving it.
7/10/25	Transwestern Bench	The porta potty tipped over due to a severe wind gust and released blue-colored wastewater onto ground. The wastewater did not reach the nearby stormwater outfall	Blue-colored wastewater	Unknown	An approximate 3 gallons of impacted soil was removed.	The porta potty was tied down with ropes tie to concrete buckets to prevent it from tipping over in the future.
6/27/25	MW-100D	A release of hydraulic fluid occurred during drilling. As the hydraulic fluid line was pressurized at the time of release, the fluid impacted the drill rig, support tinner, secondary containment, soils in the hopper, drilling mud in the mud tub, and soils on the drill pad.	Hydraulic fluid	About 1 gallon	Impacted soil was removed and containerized at the drill pad. After the drill rig is moved off the location, an inspection was conducted and determined that no additional cleanup is needed. The drill rig and equipment were decontaminated at the Transwestern Bench. Wastewater generated	Additional inspections will be conducted on the hydraulic lines of the breakout table jaws during rough drilling condition. Ensure spare lines and parts are available for replacement.

Date Release Identified ^[a]	Release Location	Description of Release	Material Released Outside of Containment	Approximate Volume of Material Released	Cleanup Action	Corrective Action To Prevent Re-Occurrence
					was sampled to determine disposal options.	
6/15/25	MW-100D	A release of drilling water and mud from mud tub occurred as the drill crew pumped out water from the mud tub with a trash pump. While the trash pump was inside a containment, the hose connections were not, resulting in release to ground.	Drilling water and mud	About ½ gallon	About 1.5 gallons of the impacted soil was removed and containerized in a 5-gallon bucket. The trash pump was placed on secondary containment big enough for hose connections to be located within secondary containment.	Reminders communicated to staff during the daily tailboard safety meetings to make necessary changes to secondary containments when non-routine tasks are being performed.
5/31/25	IM-3 Access Road/Entrance to IRL-4 Work Area	A release of diesel from dump truck(s)	Diesel fuel	About 2 quarts	Impacted soil/rock was removed and place into a 55-gallon drum at the MW-20 Bench. Release is due to thermal expansion of diesel in the fuel tank of dump truck(s) hauling excavated soil from IRL-4 to the soil processing yard.	Fuel construction equipment including dump truck(s) to about 75% capacity to allow for thermal expansion.
5/9/25	IRL-1 (within Staging Area 6)	A release of freshwater	Freshwater	5-10 gallons	Impacted soil/rock was removed and place into 5-gallon buckets. The release was due to a mud tub seal break while conducting cleanout runs after the 10-inch temporary conductor casing was advanced. Soil built up inside the 10-inch casing caused the vibration that broke the mud tub seal.	Remove soil build up inside casing. Procure a new mud tub to replace the older one to help create a better mud tub seal.
4/16/25	IRL-3	A release of hydraulic oil from the drill rig to ground	Hydraulic oil mixed with lube oil	About 0.25 gallons (most fell into secondary containment)	Impacted soil and rock was removed and placed into a bucket at the MW-20 Bench. Release was due to a seal failing. The drill rig was removed from site for repair.	Increase routine inspections in areas of hard drilling as this increases vibrations on drilling equipment.
2/12/25	MW-20 Bench	A release of hydraulic oil from a rental telehandler to ground.	Hydraulic oil	About 0.1 gallon	The rental telehandler was inspected upon delivery and used for two days prior to the release. A mechanic inspected the equipment on 2/13/25 and determined that repair was needed. The equipment was removed from the site on 2/18/25.	If equipment is to be driven for a longer period of time at a higher RPM than the normal running speed (i.e. if it is being driven down the road to another work site), a secondary inspection will be conducted upon arrival to the work area in addition

Date Release Identified ^[a]	Release Location	Description of Release	Material Released Outside of Containment	Approximate Volume of Material Released	Cleanup Action	Corrective Action To Prevent Re-Occurrence
					Approximately 1.5 gallons of impacted soil and rock was removed and placed into a bucket. The bucket is stored at the MW-20 Bench.	to the morning inspection. The Heavy Equipment Operation JSA has been marked up to document this change.
1/11/25	IRZ-37	A release of approximately 0.5 gallon of well rehabilitation acid solution was released from a transfer hose to ground.	Well rehabilitation solution (a mixture of well rehab acids [Nuwell 210 and Nuwell 310], and freshwater	About 0.5 gallon	Approximately 3 gallons of impacted soil were removed and placed into a bucket. The bucket was brought to the MW-20 Bench. A sample of the impacted soil was collected by Compliance personnel on 1/14/25 for analysis. Analytical results indicated that the impacted soil is non-hazardous.	SOP was updated to clarify process disconnecting any hose sections and ensuring the plastic liner on the ground is long enough to fully walk out the lengths of hoses used to perform work.

^[a] For brevity and readability, releases prior to 2025 are not listed in this report. For a complete list of those releases, please Table 2-5 of the February 2025 Monthly Progress Report. The monthly progress reports can be accessed via the [Project website](#).

Figures

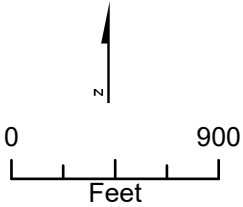


LEGEND

- Existing Access Route continue to be used for remedial activities
- Existing Route to be used and maintained for access to remedial activities
- Roads to be improved or constructed for groundwater remedy
- Staging Areas for Remediation Project
- Soil Processing Yard (Area #5) and Construction Headquarter (Area #4) for Remediation Project

Notes:

- Area #3 was not be used as the Construction Headquarter (CHQ). The CHQ was moved to Area #4.
- Area #9 is the primary truck inspection area. Areas #4, 5, 18, and 25 might also be used depending on the specific construction activity.
- Decontamination pads will be located in Area #4 (Construction Headquarters), Area #21 (Topock Compressor Station), and Area #23 (Transwestern Bench).
- Areas #15, 16, 17, 19, and 20 will not be used as staging areas. Areas #16, 17, and 19 may be part of the primary work zones for remedy infrastructure along the access road.
- Area #20 may be part of the primary work zone for installation of future provisional well IRL-6 (if determined to be needed in the future) and associated piping/concrete/vault.
- Public roadways outside of the EIR project area and the APE can also be used for remedy implementation.



UPDATED 03/10/2025

**FIGURE 2-1
CONSTRUCTION SITE PLAN
AND ACCESS ROUTES**

GROUNDWATER REMEDY PHASE 1
CONSTRUCTION
PG&E TOPOCK COMPRESSOR STATION
NEEDLES, CALIFORNIA



Legend

◆ Phase 2b Well

Figure 2-2
Phase 2b Well Locations
PG&E Topock Compressor Station,
Needles, California

Attachments

The following attachments did not have any updates, and are not included in this monthly report:

D. Perimeter Air Sampling Analytical Results

Attachment A

Photographs



Photo showing grading and vegetation removal at MW-JJ in the floodplain.



Photo showing grading at FW-01.



Photo showing preparation of MW-J drill pad.



Photo showing drilling at MW-101 (former MW-P) in the foreground and drilling at MW-103 (former MW-BB) in the background. To the right is a development rig at MW-100 (former MW-I).

Attachment B
Available Boring and Well Construction
Logs, Groundwater Sample Results from
Well Drilling, and Well Testing Activities

Location ID	Sample ID	Sample Date	Sample Type	Validated	Arsenic, dissolved (µg/L)	Chromium, Hexavalent (µg/L)	Chromium, total dissolved (µg/L)	Total dissolved solids (mg/L)
MW-102D-VAP-46-51	DUP-02-20250724	7/24/2025	N	N	0.38	15	15	1,500
MW-102D	MW-102D-VAP-46-51	7/24/2025	N	N	0.45	15	15	1,500
MW-102D	MW-102D-VAP-91-96	7/25/2025	N	N	ND (0.1)	ND (0.2)	ND (1.0)	4,200
MW-102D	MW-102D-VAP-143-148	7/26/2025	N	N	ND (0.1)	ND (1.0)	ND (1.0)	5,400
MW-102D	MW-102D-VAP-187-192	7/27/2025	N	N	ND (0.1)	ND (1.0)	ND (1.0)	6,400
MW-102D	MW-102D-VAP-232-237	7/27/2025	N	N	ND (0.1)	ND (1.0)	ND (1.0)	6,300
MW-102D	MW-102D-VAP-269-274	7/28/2025	N	N	ND (0.1)	ND (1.0)	ND (1.0)	4,800

Acronyms and Abbreviations:

- = not applicable or not available
- µg/L = micrograms per liter
- µS/cm - microsiemens per centimeter
- 0/00 = parts per thousand
- CaCO3 = calcium carbonate
- CFU/mL = colony forming unit per milliliter
- DEGC = degrees celsius
- FD = field duplicate
- ID = identification
- J = estimated value
- mg/L = milligram per liter
- N = Normal
- ND = not detected (at laboratory limit shown)
- PG&E = Pacific Gas & Electric Corporation

Attachment C
Soil Sampling Locations and Available Soil
Analytical Results



Legend

 Soil Samples Collected in August 2025

Baseline Soil Sampling
PG&E Topock Compressor Station,
Needles, California

Attachment E
Noise Monitoring Results
(SEIR NOISE-2 and NOISE-3 Requirement)

Attachment E. Noise Monitoring Results

In conformance with the Supplemental Environmental Impact Report (SEIR) Mitigation Measure NOISE-2, noise monitoring has been conducted with ANSI S1.4 Type 1, precision sound level meters when construction activities are within the specified distance (e.g., 1,850 feet from sensitive receptors in California) at approved monitoring locations previously determined in coordination with the Tribes and landowners/managers. The goal of the noise monitoring is to identify if noise levels from project construction activities exceed applicable standards of the San Bernardino and Mohave County codes. Exceedance of standards would require coordination with the Tribes and landowners/managers to evaluate the potential constraints and locations for temporary engineered acoustical barriers. Consistent with the request of the Tribes, monitoring equipment is not left at the approved monitoring locations; rather, it is mounted on a tripod for attended representative measurements and removed when the monitoring event is complete.

When a new construction activity is conducted or a previously monitored construction activity is conducted closer to a noise-sensitive area, monitoring is conducted at more frequent intervals to evaluate the potential need for an acoustical barrier. As the activities continue in the same location and multiple attended measurements indicate that the applicable standard has not been exceeded by the construction activity, periodic attending monitoring events are conducted to confirm continued compliance.

The attended monitoring events document the A-weighted equivalent continuous sound level (L_{eq}) at periodic intervals (e.g., 5, 10, 15, 20, 30, 40, 50 and 60 minutes). The trend of the data at these intervals is evaluated in the field to assess the stability in the sound level to determine the duration of the monitoring event. To date, when the interval data are relatively stable or clearly below the standard, the attended monitoring event is typically be 10 minutes in duration. As the applicable standards are expressed in terms of the 24-hour average day-night sound level (L_{dn}) which is based on the L_{eq} metric, the measured L_{eq} is compared to the applicable L_{dn} standard for mobile noise sources (i.e., 60 A-weighted decibels [dBA] for Park Moabi, 65 dBA at all other locations). This results in a reasonable and conservative assessment given construction activities are not emitting noise continuously over a 24-hour period, nor are they occurring frequently during the nighttime hours (10 p.m. to 7 a.m.).

In August 2025, the following monitoring events were conducted:

- Fourteen events at the pre-approved location west of the mobile home park at Moabi Regional Park. Construction activities closest to this monitoring location include soil management activities at the SPY and Construction Headquarters (CHQ), as well as traffic on NTH. The sound level typically varied between 43 and 62 dBA, with an average and median of 48-49 dBA.
- Four events at the pre-approved location near the UHR-1 mitigation planting area, off National Trails Highway (NTH). In August 2025, construction-related activity closest to this monitoring location is primarily construction activities associated with MW-JJ access road and drill pad preparation, and construction traffic on NTH. The sound level typically varied between 43 and 56 dBA, with an average and median of 50 dBA.
- Sixteen events at the pre-approved location near and at the same elevation as Maze C. Construction activities closest to this monitoring location are associated with site preparation and drilling at MW-101 (former MW-P), MW-102 (former MW-AA), and MW-103 (former MW-BB), well development at MW-100 (former MW-I), and well support activities at Staging area 6. The sound level typically varied between 43 and 71 dBA, with an average and median of 55 dBA. The maximum sound level was recorded during a high wind event.

Due to close proximity of MW-100, MW-101, and MW-102 to this pre-approved monitoring location, sound curtain was erected during drilling/development activities at these locations.

Attachment F
Six-Week Look-Ahead Schedule

Six-Week Look-Ahead Schedule
PG&E Topock Compressor Station Remedial Activities

Activity	Sunday	Monday	Tuesday	Wednesday	Thursday	Friday	Saturday
Primary Planned Activities	8/31/2025	9/1/2025	9/2/2025	9/3/2025	9/4/2025	9/5/2025	9/6/2025
Start Time (PST)	6:00 AM	6:00 AM	6:00 AM	6:00 AM	6:00 AM	6:00 AM	6:00 AM
Site Wide Groundwater Sampling G3*, F3*, E4*, F4*, G4*, D5*, E5*, F5*, G5*, D6*, E6*, F6*, & G6*	No Work	No Work	No Work	No Work	No Work	No Work	No Work
Site Wide Construction E4*, F4*, G5*, E5*, F5*	No Work	No Work	No Work	^MW-JJ Drilling Site Preparation, MW-P/101 Drilling, MW-BB/103 Drilling, MW-100 Development, C18 Pipeline Installation	^MW-JJ Drilling Site Preparation, MW-P/101 Drilling, MW-BB/103 Drilling, MW-100 Development, C18 Pipeline Installation	^MW-JJ Drilling Site Preparation, MW-P/101 Drilling, MW-BB/103 Drilling, MW-100 Development, C18 Pipeline Installation	^IRL-04 Drilling Site Preparation, MW-JJ Drilling Site Preparation, MW-P/101 Drilling, MW-BB/103 Drilling, MW-100 Development, C18 Pipeline Installation
Site Wide Revegetation F5*, F6*, D5*, G5*	No Work	No Work	No Work	No Work	Irrigation O&M/Watering	No Work	No Work
Primary Planned Activities	9/7/2025	9/8/2025	9/9/2025	9/10/2025	9/11/2025	9/12/2025	9/13/2025
Start Time (PST)	6:00 AM	6:00 AM	6:00 AM	6:00 AM	6:00 AM	6:00 AM	6:00 AM
Site Wide Groundwater Sampling G3*, F3*, E4*, F4*, G4*, D5*, E5*, F5*, G5*, D6*, E6*, F6*, & G6*	No Work	Monthly Sampling	Monthly Sampling	Monthly Sampling	Monthly Sampling	No Work	No Work
Site Wide Construction E4*, F4*, G5*, E5*, F5*	^IRL-04 Drilling Site Preparation, MW-JJ Drilling Site Preparation, MW-P/101 Drilling, MW-BB/103 Drilling, MW-AA/102 Development, C18 Pipeline Installation	^IRL-04 Drilling Site Preparation, MW-P/101 Drilling, MW-BB/103 Drilling, MW-AA/102 Development, C18 Pipeline Installation	^IRL-04 Drilling Site Preparation, MW-P/101 Drilling, MW-BB/103 Drilling, MW-AA/102 Development, C18 Pipeline Installation	^IRL-04 Drilling Site Preparation, MW-P/101 Drilling, MW-BB/103 Drilling, MW-AA/102 Development, C18 Pipeline Installation	^IRL-04 Drilling Site Preparation, MW-P/101 Drilling, MW-BB/103 Drilling, MW-AA/102 Development, C18 Pipeline Installation, Phase 2B Pipelines Project Initiation Meeting	No Work	No Work
Site Wide Revegetation F5*, F6*, D5*, G5*	No Work	No Work	Monitoring	^Monitoring/Weeding/Soil Sampling	Monitoring/Weeding Irrigation O&M/Watering	Monitoring/Weeding	Monitoring
Primary Planned Activities	9/14/2025	9/15/2025	9/16/2025	9/17/2025	9/18/2025	9/19/2025	9/20/2025
Start Time (PST)	6:00 AM	6:00 AM	6:00 AM	6:00 AM	6:00 AM	6:00 AM	6:00 AM
Site Wide Groundwater Sampling G3*, F3*, E4*, F4*, G4*, D5*, E5*, F5*, G5*, D6*, E6*, F6*, & G6*	No Work	No Work	No Work	No Work	No Work	No Work	No Work
Site Wide Construction E4*, F4*, G5*, E5*, F5*	No Work	No Work	^MW-P/101 Drilling, MW-BB/103 Drilling, FW-01 Drilling Mobilization and Site Setup, MW-JJ Airknife, C18 Pipeline Installation, MW-20 Bench Mechanical , Pipeline B California Trench Mobilization	^MW-P/101 Drilling, MW-BB/103 Drilling, FW-01 Drilling, MW-DD Airknife, C18 Pipeline Installation, MW-20 Bench Mechanical, Pipeline B California Trench Mobilization, Pipeline B California Trench Pre-Work Field Review	^MW-P/101 Drilling, MW-BB/103 Drilling, FW-01 Drilling, C18 Pipeline Installation, Pipeline B California Trench. MW-20 Bench Mechanical	^MW-P/101 Drilling, MW-BB/103 Drilling, FW-01 Drilling, C18 Pipeline Installation, Pipeline B California Trench, MW-20 Bench Mechanical	^MW-P/101 Drilling, MW-BB/103 Drilling, FW-01 Drilling, C18 Pipeline Installation, Pipeline B California Trench
Site Wide Revegetation F5*, F6*, D5*, G5*	Monitoring	Monitoring	No Work	No Work	Irrigation O&M/Watering	No Work	No Work
Primary Planned Activities	9/21/2025	9/22/2025	9/23/2025	9/24/2025	9/25/2025	9/26/2025	9/27/2025
Start Time (PST)	6:00 AM	6:00 AM	6:00 AM	6:00 AM	6:00 AM	6:00 AM	6:00 AM
Site Wide Groundwater Sampling G3*, F3*, E4*, F4*, G4*, D5*, E5*, F5*, G5*, D6*, E6*, F6*, & G6*	No Work	No Work	No Work	No Work	No Work	No Work	No Work
Site Wide Construction E4*, F4*, G5*, E5*, F5*	^MW-P/101 Drilling, MW-BB/103 Drilling, FW-01 Drilling, C18 Pipeline Installation, Pipeline B California Trench	^MW-P/101 Drilling, IRL-04 Drilling Mobilization and Site Setup, FW-01 Drilling, MW-BB/CC Drill Site Preparation, Pipeline B California Trench	^MW-P/101 Drilling, IRL-04 Drilling, FW-01 Drilling, MW-BB/CC Drill Site Preparation, Pipeline B California Trench	^MW-P/101 Drilling, IRL-04 Drilling, FW-01 Drilling, MW-BB/CC Drill Site Preparation, Pipeline B California Trench	^MW-P/101 Drilling, IRL-04 Drilling, FW-01 Drilling, MW-BB/CC Drill Site Preparation, Pipeline B California Trench	No Work	No Work
Site Wide Revegetation F5*, F6*, D5*, G5*	No Work	No Work	No Work	No Work	Irrigation O&M/Watering	No Work	No Work
Primary Planned Activities	9/28/2025	9/29/2025	9/30/2025	10/1/2025	10/2/2025	10/3/2025	10/4/2025
Start Time (PST)	6:00 AM	6:00 AM	6:00 AM	6:00 AM	6:00 AM	6:00 AM	6:00 AM
Site Wide Groundwater Sampling G3*, F3*, E4*, F4*, G4*, D5*, E5*, F5*, G5*, D6*, E6*, F6*, & G6*	No Work	No Work	No Work	No Work	No Work	No Work	No Work
Site Wide Construction E4*, F4*, G5*, E5*, F5*	No Work	No Work	^MW-P/101 Drilling, IRL-04 Drilling, FW-01 Drilling, MW-BB/CC Drill Site Preparation, Pipeline B California Trench	^MW-P/101 Drilling, IRL-04 Drilling, FW-01 Drilling, MW-BB/CC Drill Site Preparation, Pipeline B California Trench	^MW-P/101 Drilling, IRL-04 Drilling, FW-01 Drilling, MW-BB/CC Drill Site Preparation, Pipeline B California Trench	^IRL-04 Drilling, FW-01 Drilling, MW-BB/CC Drill Site Preparation, Pipeline B California Trench	^MW-Q Drilling Mobilization and Site Setup, FW-01 Drilling, MW-BB/CC Drill Site Preparation, Pipeline B California Trench
Site Wide Revegetation F5*, F6*, D5*, G5*	No Work	No Work	No Work	No Work	Irrigation O&M/Watering	No Work	No Work
Primary Planned Activities	10/5/2025	10/6/2025	10/7/2025	10/8/2025	10/9/2025	10/10/2025	10/11/2025
Start Time (PST)	6:00 AM	6:00 AM	6:00 AM	6:00 AM	6:00 AM	6:00 AM	6:00 AM
Site Wide Groundwater Sampling G3*, F3*, E4*, F4*, G4*, D5*, E5*, F5*, G5*, D6*, E6*, F6*, & G6*	No Work	No Work	No Work	No Work	No Work	No Work	No Work
Site Wide Construction E4*, F4*, G5*, E5*, F5*	^MW-Q Drilling, FW-01 Drilling, MW-BB/CC Drill Site Preparation, Pipeline B California Trench	^MW-Q Drilling, FW-01 Drilling, MW-BB/CC Drill Site Preparation, Pipeline B California Trench	^MW-Q Drilling, FW-01 Drilling, MW-BB/CC Drill Site Preparation, Pipeline B California Trench	^MW-Q Drilling, FW-01 Drilling, MW-BB/CC Drill Site Preparation, Pipeline B California Trench	^MW-Q Drilling, FW-01 Drilling, MW-BB/CC Drill Site Preparation, Pipeline B California Trench	No Work	No Work
Site Wide Revegetation F5*, F6*, D5*, G5*	No Work	No Work	No Work	No Work	Irrigation O&M/Watering	No Work	No Work
	Note: The Pre-Work Field Review was formerly known as the Last Look						



Figure showing a grid superimposed on the Topock site map. Each grid position is denoted by a letter followed by a number.

Attachment G
Groundwater Monitoring Data (DTSC
Condition of Approval xi)

(Groundwater Data Presented in Separate PDF)