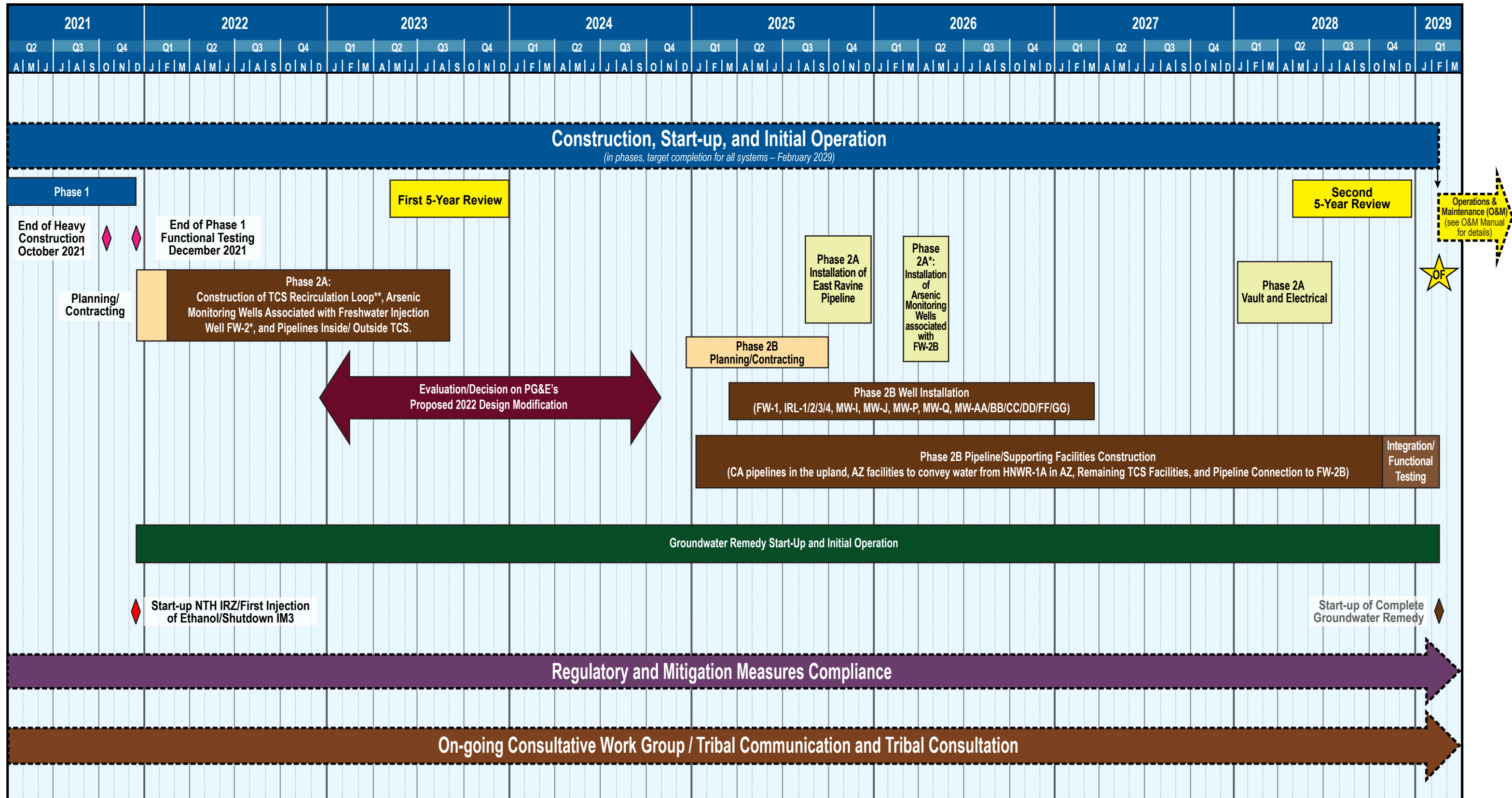


Groundwater Remedy Construction, Start-up, and Initial O&M Schedule

PG&E Topock Compressor Station | Needles, California
June 2025



LEGEND

OF The remedy becomes Operational and Functional (OF) either one year after completion of construction or when the groundwater is determined to be functioning properly and performing as designed

* Assume a decision for FW-2 and associated Arsenic MWs by Q1 2026

** Per the 2015 Basis of Design Report, the **TCS Recirculation Loop** consists of injection wells in TCS, extraction wells on the Transwestern Bench, and extraction wells in the East Ravine area. The **Inner Recirculation Loop** consists of IRL wells in the uplands and River Bank wells along the riverbank.