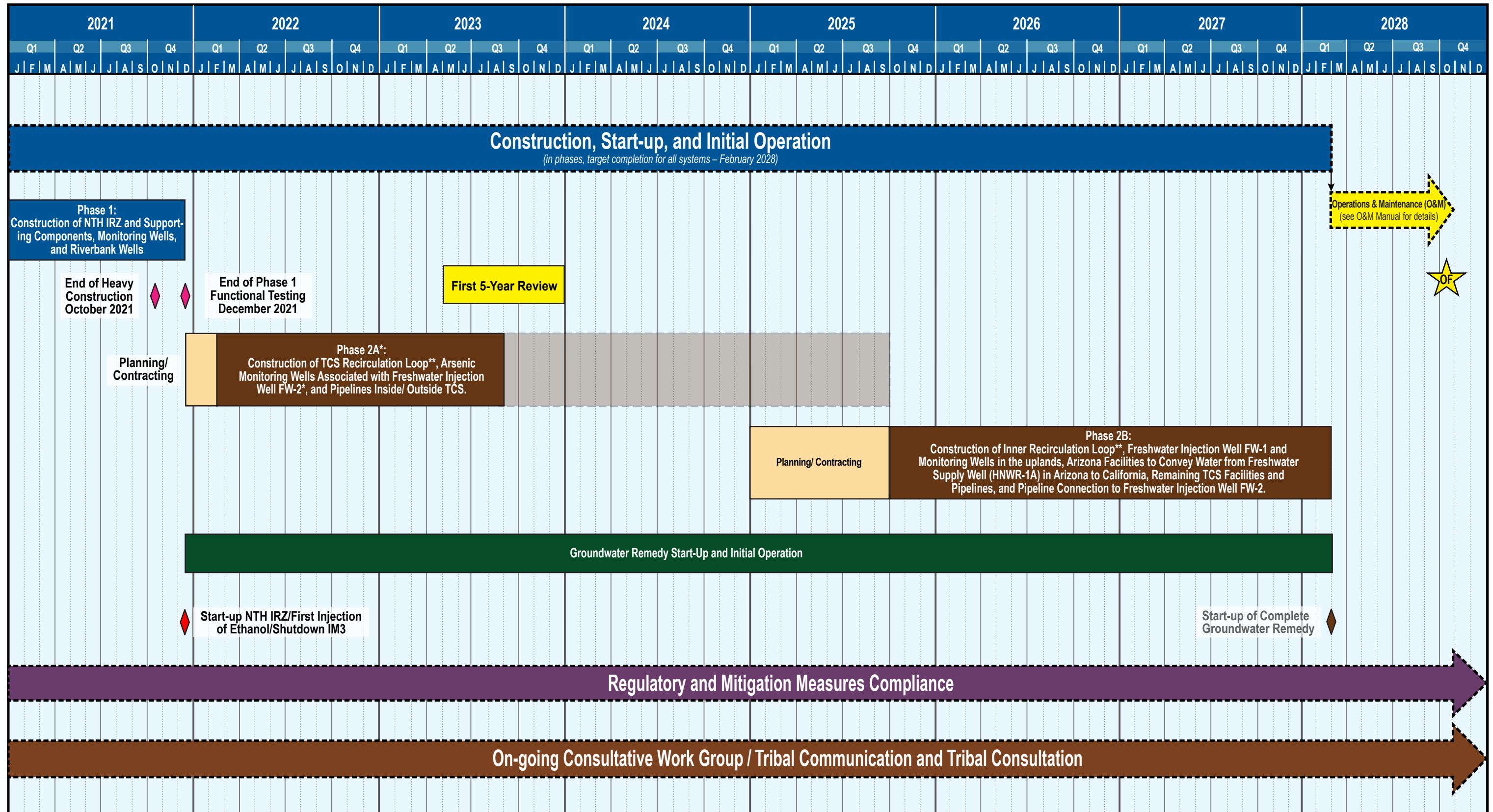


Groundwater Remedy Construction, Start-up, and Initial O&M Schedule



LEGEND



The remedy becomes **Operational and Functional (OF)** either one year after completion of construction or when the groundwater is determined to be functioning properly and performing as designed

* Assume a decision for FW-2 and associated Arsenic MWs by Q1 2025

** Per the 2015 Basis of Design Report, the **TCS Recirculation Loop** consists of injection wells in TCS, extraction wells on the Transwestern Bench, and extraction wells in the East Ravine area. The **Inner Recirculation Loop** consists of IRL wells in the uplands and River Bank wells along the riverbank.