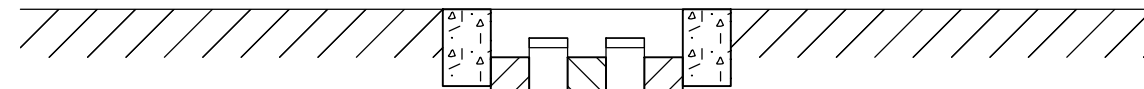


# WELL COMPLETION DIAGRAM

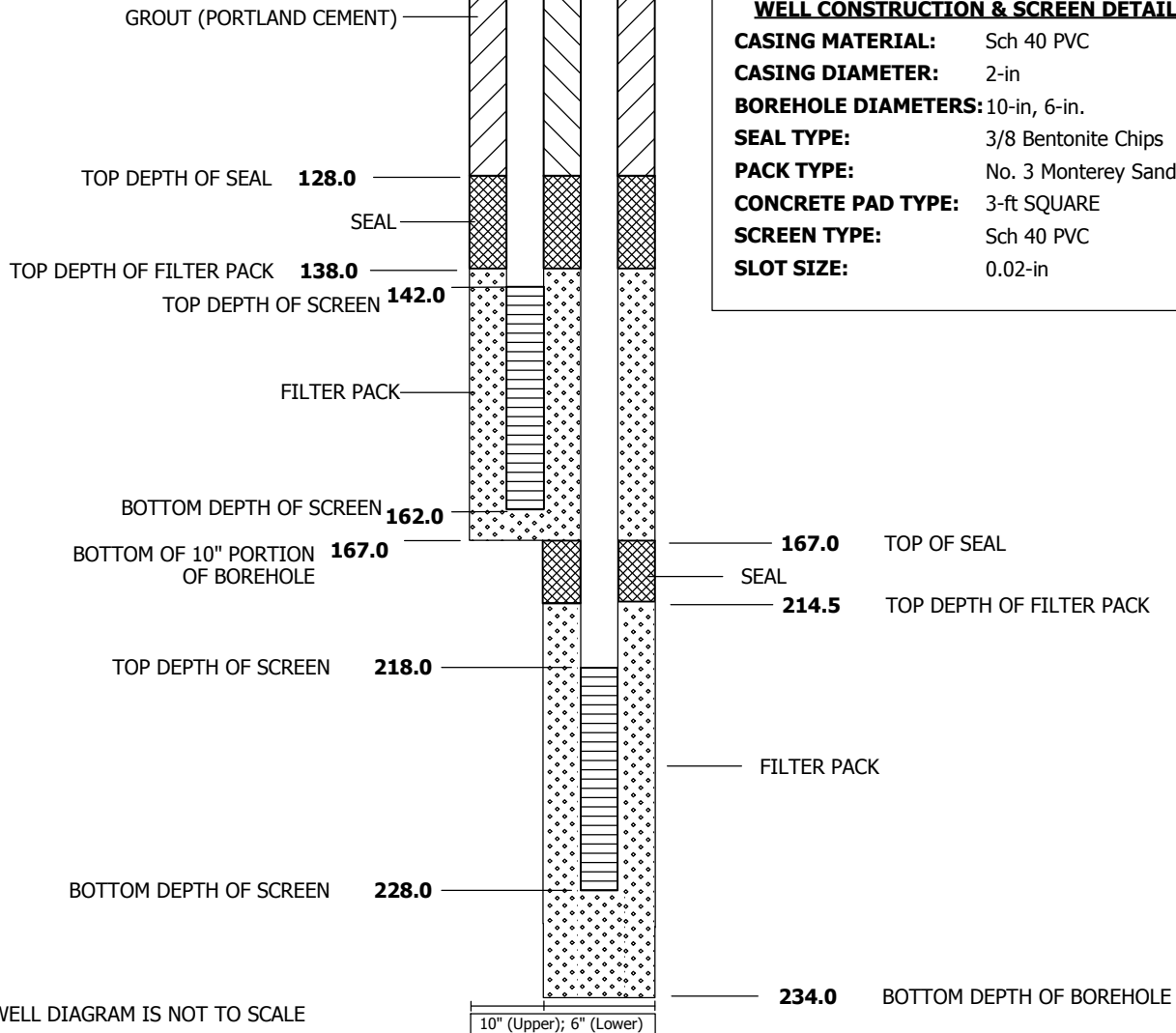
<b>PROJECT NO:</b> 417981.ER.02.FW	<b>PROJECT:</b> ER-TCS Groundwater Investigation	<b>WELL NO:</b> <i><b>MW-66-165</b></i> <i><b>MW-66-230</b></i>
------------------------------------	--	--

<b>LOCATION:</b> Site 6	
<b>DRILLING CONTRACTOR:</b> Boart Longyear (R. Sawrey)	<b>DRILLING START:</b> 4/12/2011
<b>DRILLING METHOD:</b> Rotosonic	<b>DRILLING END:</b> 4/20/2011
<b>LOGGER:</b> A. Brewster (Northstar)	<b>WELL COMPLETION DATE:</b> 4/20/2011
<b>GROUND SURFACE ELEVATION (NAVD 88):</b> 586.6 ft AMSL	<b>GENERAL REMARKS:</b> Centralizers at 15, 30, 45, 60, 75, 90, 105, 120, 135, 165, and 215 ft bgs.
<b>NORTHING (CCS NAD 83 Z 5):</b> 2100957.66	

## 12-in DIAMETER WELL VAULT (FLUSH WITH GRADE)



**NOTES:**  
1. All depths are reported as feet below ground surface



































PROJECT NUMBER: <b>417981.ER.02.FW</b>	BORING NUMBER: <b>BH-66</b>	SHEET 15 OF 15
<b>ROCK CORE LOG</b>		

PROJECT : PG&E Topock, ER-TCS Investigation      LOCATION : Site 6 (TCS) (2100957.7 N, 7615153.8 E)  
 ELEVATION : 586.6 ft      DRILLING CONTRACTOR : Boart Longyear (R. Sawrey)  
 CORING EQUIPMENT AND METHOD : HQ Wire-Line Rotary      ORIENTATION : Vertical  
 WATER LEVELS : Approx. 130 ft BGS      START : 4/12/2011      END : 9/11/2011      LOGGER : A. Brewster (Northstar)

DEPTH BELOW SURFACE (ft)	CORE RUN LENGTH AND RECOVERY (%)	DISCONTINUITIES		SYMBOLIC LOG	LITHOLOGY	COMMENTS	
		R Q D (%)	FRACTURES PER FOOT				DESCRIPTION
							DEPTH, TYPE, ORIENTATION, ROUGHNESS, PLANARITY, INFILLING MATERIAL AND THICKNESS, SURFACE STAINING, AND TIGHTNESS
270	R5 5 ft 100%	100	0		<b>Conglomerate</b> 248.0-271.0' - dark reddish brown, (10YR 3/4), no dominant mineralogy, highly cemented, moderate ( ), angular to subangular, massive (no bedding planes), matrix-supported.		
			0				
271.0			0				
275					End Drilling on 9/11/2011 Total Borehole Depth: 271.0 ft bgs	This borehole was converted into the following monitoring well(s): MW-66-165, MW-66-230, and MW-66BR-270	
280							
285							