

Handout 5B
Schedule Highlights
Summary of Key Schedule Changes

Consultative Work Group Meeting
October 17, 2012

Schedule Highlights

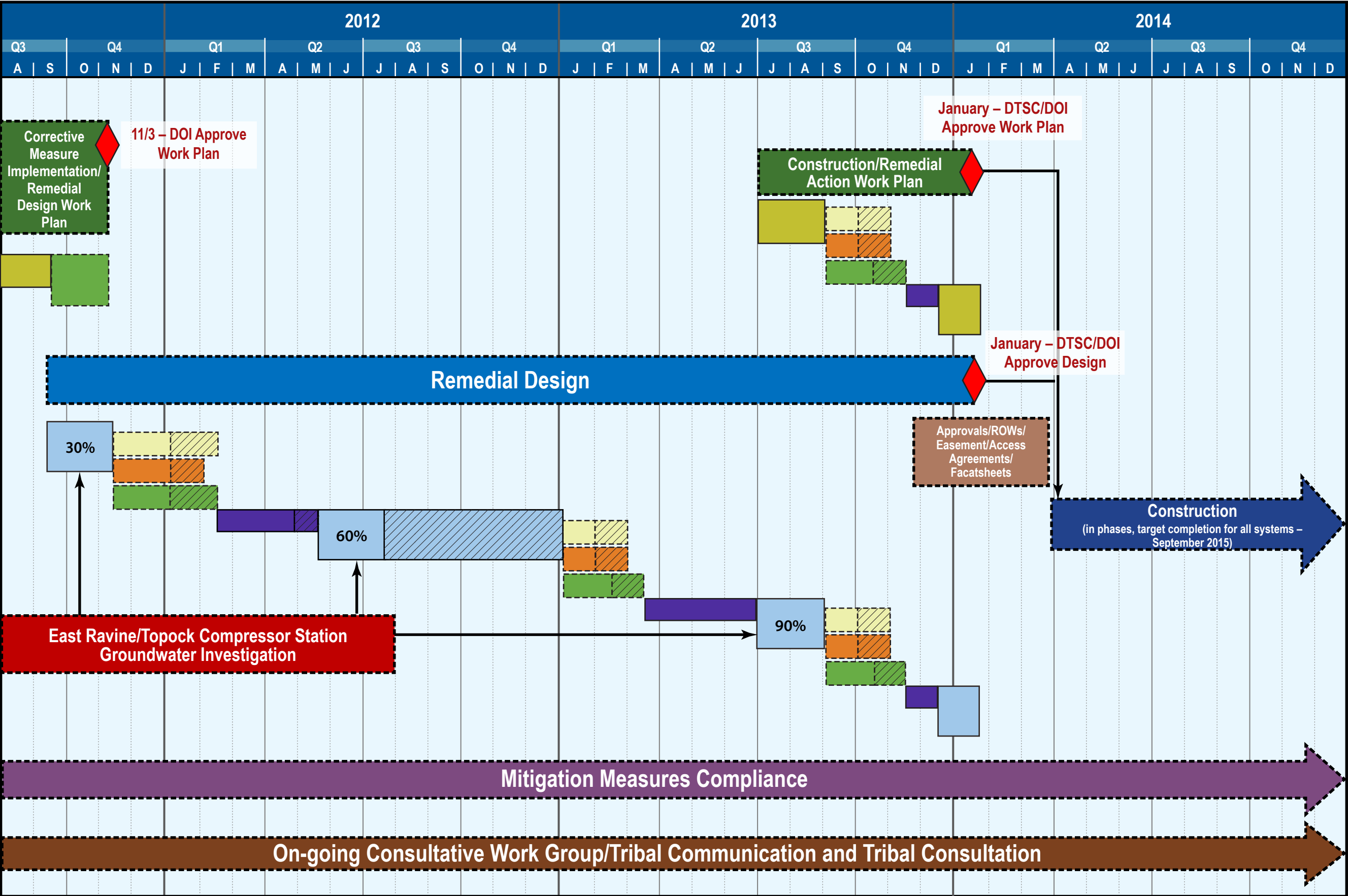
East Ravine/Compressor Station Groundwater Investigation

- Completed field implementation
 - ✓ Phase 1 – completed 2009
 - ✓ Phase 2 - March 2011 – July 2012
 - ✓ Completed scope at last borehole (MW-72BR-200) – July 2012
 - ✓ Screen calls with agencies, Tribes, and stakeholders
 - ✓ East Ravine-Compressor Station (ER-TCS) wells have been incorporated into site wide groundwater monitoring program, and are being sampled quarterly
 - ✓ Data incorporated into remedial design
- Reporting underway
 - ✓ November 2012 - Submit Addendum to the ER-TCS Summary Report

Groundwater Remedy Design

- Continue to evaluate freshwater supply options that do not require arsenic treatment
- Intermediate (60%) design
 - ✓ PG&E submits intermediate design (including draft O&M Manual) – 1/2/13
 - ✓ Schedule subject to change pending progress of freshwater supply evaluation (see next presentation & Handout 6A)
 - ✓ Site visits to facilitate review – January/February
 - ✓ Stakeholders review – 1/8/12 to 3/9/13
 - ✓ Tribal consultation - 1/8/12 to 3/9/13
 - ✓ Agencies provide comments/direction to PG&E – 3/24/13
 - ✓ Comments resolution – 3/25/13 through 6/28/13

Groundwater Remedy Design, Construction, and Initial Start-Up Schedule



- LEGEND**
- Draft/Final Work Plan
 - Consultative Work Group/Technical Work Group Review
 - Preliminary/Intermediate/Pre-Final/Final Design
 - Tribal Consultation
 - Agencies Review
 - Comment Resolution
 - Extended Period

Soil Activities

- Submitted final work plan – 9/5/12
 - ✓ Final work plan to CWG/TWG/Tribes – 9/17/12
 - ✓ DOI review/approve work plan – anticipate 10/31/12
 - ✓ DTSC review/approve work plan – anticipate 10/31/12, pending CEQA review
- Start work plan implementation – Target November 2012
 - ✓ Project Initiation Meeting – Late January 2013
 - ✓ Field Implementation/Data Analysis – Late January through Late October 2013
- Start reporting (RFI/RI Volume 3) - Target October 2013
- Start soil risk assessment – Target October 2014

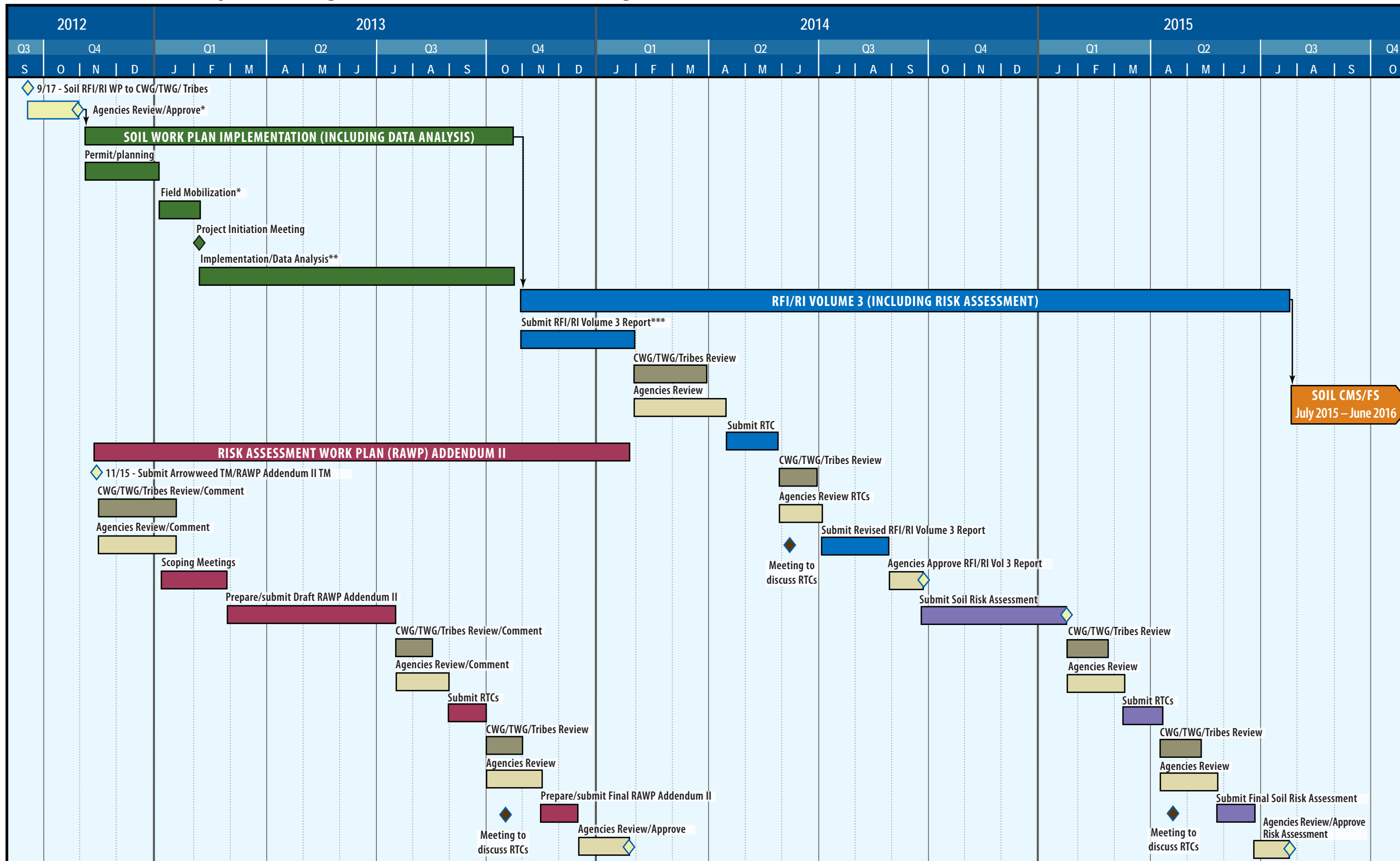
Risk Assessment Work Plan (RAWP) Addendum II

- Submit Arrow weed TM and RAWP Addendum II TM: 11/15/12
 - ✓ CWG/TWG/Agencies review TMs: 11/16/12– 1/11/13
 - ✓ Meetings to finalize scope for RAWP Addendum II: 1/16-2/28/13
- Submit Draft RAWP Addendum II: 7/15/13
 - ✓ CWG/TWG/Tribes review: 7/15 – 8/14/13
 - ✓ Agencies review: 7/15 – 8/29/13
- Submit Response to Comments (RTCs): 9/27/13
 - ✓ CWG/TWG/Tribes review: 9/27 – 10/27/13
 - ✓ Agencies review: 9/27 – 11/11/13
 - ✓ Meeting to discuss RTCs – 10/11/13 (approx. 2 weeks after receipt of RTCs submittal)

Risk Assessment Work Plan (RAWP) Addendum II (Continued)

- Submit Final RAWP Addendum II: 12/25/13
 - ✓ Agencies approval – anticipated 1/24/14

Soil RCRA Facility Investigation/Remedial Investigation Timeline (2012-2015)



* The timing of work plan approval is pending CEQA review. The timing and duration of mobilization is estimated and will be redefined following DTSC/DOI approval of the work plan.
 ** Field Implementation schedule duration will depend on field conditions, ability to perform field activities concurrently, and reaching timely decisions regarding the need for additional samples.
 *** The timing and duration of Reporting is estimated and will be refined after completion of WP Implementation.

CEQA	California Environmental Quality Act	RTC	Response to Comments
CMS/FS	Corrective Measure Study/Feasibility Study	TM	Technical Memo
CWG	Consultative Work Group	TWG	Technical Work Group
DOI	US Department of the Interior	WP	Work Plan
DTSC	California Department of Toxic Substances Control		

Summary of Key Schedule Changes

Handout 5B

Summary of Key Schedule Changes since August 15, 2007 (Rev. 16)

October 17, 2012 changes highlighted in Yellow – changes are from April 18, 2012

Activities	Forecast Schedule Deviation	Key Reasons
Groundwater		
East Ravine Groundwater Investigation Phase 2/ Compressor Station Wells Field Implementation (Lines 574-580)	<ul style="list-style-type: none"> • FF 12/2/2011 (Rev. 9) • FF 1/27/2012 (Rev. 10) • FF 10/31/2011 (Rev. 11) • FF 12/12/2011 (Rev. 12) • FF 1/30/2012 (Rev. 13) • FF 5/23/2012 (Rev. 14) • FF 8/24/2012 (Rev. 15) • FF 11/16/2012 (Rev. 16) 	<ul style="list-style-type: none"> • Duration of field work will be verified after receipt of work plan approval. • Adjusted schedule to reflect installation of contingency sites I and J. • Adjusted schedule to reflect the Addendum to the East Ravine-TCS Summary Report will be included in the 60% Basis of Design Report. • Adjusted schedule to reflect the Addendum to the East Ravine-TCS Summary Report will be submitted ahead of the Intermediate (60%) Design.
Intermediate (60%) Design (through Comment Resolution) (Lines 1408-1416)	<ul style="list-style-type: none"> • FF 3/30/2011 (Rev. 11) • FF 4/9/2011 (Rev. 12) • FF 6/14/2012 (Rev. 13) • FF 8/9/2012 (Rev. 14) • FF 12/11/12 (Rev. 15) • FF 06/28/2013 (Rev. 16) 	<ul style="list-style-type: none"> • Cascading extension of schedule from Preliminary (30%) Design. • Additional time to incorporate comments and prepare 60% Design. • Extend duration for CWG/TWG review from 30 to 60 calendar days. • Extend duration for Tribal Consultation from 30 to 60 calendar days. • Extend duration of DTSC/DOI review from 45 to 75 calendar days. • Adjusted schedule to allow for additional time to evaluate freshwater options that do not require arsenic treatment.
Pre-Final (90%)/Final (100%) Design (through Approvals) (Lines 1417-1428)	<ul style="list-style-type: none"> • FF 9/24/2012 (Rev. 11) • FF 10/2/2012 (Rev. 12) • FF 11/30/2012 (Rev. 13) • FF 1/29/2013 (Rev. 14) • FF 7/2/2013 (Rev. 15) • FF 1/20/2014 (Rev. 16) 	<ul style="list-style-type: none"> • Cascading extension of schedule from Preliminary (30%) Design. • Extend duration for CWG/TWG review from 30 to 60 calendar days. • Extend duration for Tribal Consultation from 30 to 60 calendar days. • Extend duration of DTSC/DOI review from 45 to 75 calendar days. • Cascading extension of schedule from Intermediate (60%) Design.
Construction/Remedial Action Work Plan (through Approvals) (Lines 1429-1440)	<ul style="list-style-type: none"> • FF 9/24/2012 (Rev. 11) • FF 10/2/2012 (Rev. 12) • FF 11/30/2012 (Rev. 13) • FF 1/29/2013 (Rev. 14) • FF 7/2/2013 (Rev. 15) • FF 1/20/2014 (Rev. 16) 	<ul style="list-style-type: none"> • Cascading extension of schedule from Preliminary (30%) Design. • Extend duration for CWG/TWG review from 30 to 60 calendar days. • Extend duration for Tribal Consultation from 30 to 60 calendar days. • Extend duration of DTSC/DOI review from 45 to 75 calendar days. • Cascading extension of schedule from Intermediate (60%) Design.
Right of Ways/	<ul style="list-style-type: none"> • FF 12/28/2012 (Rev. 11) 	<ul style="list-style-type: none"> • Cascading extension of schedule from Preliminary (30%) Design.

Easements/Landowner Agreements/Other Approvals/Compliance/Community Outreach (Lines 1441-1457)	<ul style="list-style-type: none"> • FF 1/7/2013 (Rev. 12) • FF 2/27/2013 (Rev. 13) • FF 4/15/2013 (Rev. 14) • FF 9/13/2013 (Rev. 15) • FF 2/21/2014 (Rev. 16) 	<ul style="list-style-type: none"> • Cascading extension of schedule from Intermediate (60%) Design. • Added details on community outreach activities – State/Federal.
Construction (Lines 1458-1468)	FF for completion of construction <ul style="list-style-type: none"> • 6/18/2014 (Rev. 11) • 6/26/2014 (Rev. 12) • 8/18/2014 (Rev. 13) • 9/29/2014 (Rev. 14) • 2/26/2015 (Rev. 15) • 9/17/2015 (Rev. 16) 	<ul style="list-style-type: none"> • Cascading extension of schedule from Preliminary (30%) Design. • Cascading extension of schedule from Intermediate (60%) Design.
Start-up (Lines 1469-1476)	FF for completion of startup <ul style="list-style-type: none"> • 12/14/2015 (Rev. 14) • 5/13/2016 (Rev. 15) • 12/2/2016 (Rev. 16) 	<ul style="list-style-type: none"> • Cascading extension of schedule from Intermediate (60%) Design.

Soil

Soil RFI/RI Work Plan (Draft, Final, and Work Plan Approvals) (Lines 831-856)	<ul style="list-style-type: none"> • Extend FF by 1.5 mos. • Extend FF by 2 weeks • Submitted RTCs on 5/5/08. • Submitted letter on Part B phasing on 7/17/08. In agencies review (Rev. 4). • Submitted details on approach to Part B Phase 1 on 9/30/08. In agencies review (Rev. 5). Part B is on hold until agencies complete this review (Rev. 6). • Extend FF to 12/1/2011 (Rev. 7). • Reduce FF to 1/19/2011 (Rev. 8). • Extend FF to 5/25/2011 (Rev. 9). • Extend FF to 7/28/2011 (Rev. 10). • FF 8/31/2011 (Rev. 11). • FF 12/6/2011 (Rev. 12). • FF 3/1/2012 (Rev. 13). • FF 5/11/2012 (Rev. 14). 	<ul style="list-style-type: none"> • 1 month due to DQO discussion and past data evaluation. • 0.5 month due to incorporation of perimeter sampling walk/verification. • Additional time for agency review of Part B Work Plan. • DTSC completed review of Part B Phase 1 proposal (7/2/09), issued request letter to PG&E. • PG&E responded to DTSC's 7/2/09 letter (8/14/09). • PG&E received DTSC's final direction on Part B (10/5/09), to resume Part B activities in February 2010. • Added time for agency review and direct on conflicting comments on Draft Part B Work Plan. • Adjusted schedule to reflect State of CA furlough ending 6/1/2010. • Align the start of Section 106 Consultation with the start of stakeholders/agencies review of Final Part B Work Plan. • Added time for preparation/submittal/concurrence with Draft DQO TM. • Added time for preparation/submittal of Draft DQO TM. • Adjusted time for revision of Draft Part B DQO TM, combination of Part A and Part B into one Work Plan, and reflection of PA consultation (55 calendar days). • Adjusted schedule to reflect additional time for Tribal consultation (total of
--	---	---

	<ul style="list-style-type: none"> • FF 9/6/2012 (Rev. 15). • FF 10/31/2012 (Rev. 16). 	<p>55 calendar days), followed by SHPO consultation (assume 30 calendar days).</p> <ul style="list-style-type: none"> • Adjusted schedule to reflect the comment resolution period, including time for site visits requested by DTSC and the Tribes. • Schedule extension reflected additional time for comment resolution. • Schedule extension also reflected additional time for revising work plan to incorporate responses to comments. • Additional two weeks for CWG/TWG/Tribes to review responses to comments. • TWG meeting to discuss responses to comments. • Added approx. 4 weeks for comment resolution. • The current anticipated approval date for the Final Soil RFI/RI Work Plan is an estimate and is pending CEQA review.
<p>Work Plan Implementation/ Data Analysis</p> <p>(Lines 857 - 865)</p>	<ul style="list-style-type: none"> • FF 8/16/2013 (Rev. 15). • FF 10/24/2013 (Rev. 16). 	<ul style="list-style-type: none"> • Adjusted schedule to reflect current anticipated approval date and scope of the Final Soil RFI/RI Work Plan.
<p>RFI/RI Vol. 3 Reporting (Draft, RTCs, Final, Approvals)</p> <p>(Lines 866 - 881)</p>	<ul style="list-style-type: none"> • FF 7/8/2014 (Rev. 15) • FF 10/1/2014 (Rev. 16). 	<ul style="list-style-type: none"> • Adjusted schedule to reflect current anticipated approval date and scope of the Final Soil RFI/RI Work Plan.
<p>Risk Assessment Work Plan Addendum II (through Approvals)</p> <p>(Lines 1093-1111)</p>	<ul style="list-style-type: none"> • FF 1/24/2014 (Rev. 16). 	
<p>Risk Assessment (through Approvals)</p> <p>(Lines 1129 - 1144)</p>	<ul style="list-style-type: none"> • FF 7/22/2015 (Rev. 16). 	<ul style="list-style-type: none"> • Adjusted schedule to reflect current anticipated schedule for approval of Soil RFI/RI Work Plan, Work Plan Implementation/Data Analysis, and RFI/RI Vol. 3 Reporting.
<p>CMS/FS Report (through Approvals)</p> <p>(Lines 1205 - 1222)</p>	<p>FF for approval of CMS/FS</p> <ul style="list-style-type: none"> • 2/21/12 (Rev. 2) • 7/3/2012 (Rev. 3) • 8/21/2012 (Rev. 5) • 2/15/2013 (Rev. 6) • 12/4/2013 (Rev. 7) • 5/16/2014 (Rev. 8) 	<ul style="list-style-type: none"> • Approx. 2 months due to cascading delay from Part A Phase 1 workplan/ approval/ permitting. • 1 month from adding a link between tribal review of CMS/FS and PG&E response to comments. • Cascading delay from Part A approval. • Cascading delay from Part A Phase 1 data gaps evaluation. • Revise the Soil CMS/FS steps to mirror the Groundwater CMS/FS steps

	<ul style="list-style-type: none"> • 5/14/2014 (Rev. 9) • 5/23/2014 (Rev. 10) • 5/21/2014 (Rev. 11) • 8/27/2014 (Rev. 12) • 11/19/2014 (Rev. 13) • 1/29/2015 (Rev. 14) • 5/27/2015 (Rev. 15) • 6/9/2016 (Rev. 16). 	<ul style="list-style-type: none"> • E.g., discussion draft, draft, resolution to comments, final. • Use the duration of the Groundwater CMS/FS steps as placeholders. • Keep the sequential order of RFI/RI and Risk before CMS/FS. • Reflect revised Part A and B schedule. • Added time for “Prepare Response to Comments” before CMS/FS comments resolution. • Adjusted schedule to reflect current anticipated approval date and scope of the Final Soil RFI/RI Work Plan. Added a hard link between the completion of the risk assessment and the start of the CMS/FS.
<p>Statement of Basis (Lines 1231 - 1237)</p> <p>Public Notice/Supplemental EIR (Lines 1367 - 1379)</p>	<p>Extend NOD filing to:</p> <ul style="list-style-type: none"> • FF 12/7/2012 (Rev. 3) • FF 1/25/2013 (Rev. 5) • FF 7/22/2013 (Rev. 6) • FF 5/8/2014 (Rev. 7) • FF 11/20/2014 (Rev. 8) • FF 11/16/2014 (Rev. 9) • FF 10/27/2014 (Rev. 10) • FF 10/2/2014 (Rev. 11) • FF 1/8/2015 (Rev. 12) • FF 4/2/2015 (Rev. 13) • FF 7/13/2015 (Rev. 14) • FF 11/8/2015 (Rev. 15) • FF 10/21/2016 (Rev. 16). 	<ul style="list-style-type: none"> • Cascading delay from CMS/FS Soil • Addition of links from a) Supplemental EIR public comment to Statement of Basis public comment and b) Supplemental EIR certification to DTSC approval of Soil Remedy. • Cascading delay from CMS/FS Soil. • Adjusted schedule to reflect current anticipated approval date and scope of the Final Soil RFI/RI Work Plan.
<p>Proposed Plan/ROD (Lines 1250 - 1260)</p>	<p>Extend ROD issuance to:</p> <ul style="list-style-type: none"> • FF 9/6/2012 (Rev. 3) • FF 1/17/ 2013 (Rev. 4) • FF 3/7/2013 (Rev. 5) • FF 11/20/2013 (Rev. 6) • FF 9/8/2014 (Rev. 7) • FF 2/18/2015 (Rev. 8) • FF 2/16/2015 (Rev. 9) • FF 2/25/2015 (Rev. 10) • FF 2/23/2015 (Rev. 11) • FF 6/1/2015 (Rev. 12) • FF 8/24/2015 (Rev. 13) • FF 11/3/2015 (Rev. 14) • FF 2/29/2016 (Rev. 15) • FF 3/14/2017 (Rev. 16). 	<ul style="list-style-type: none"> • Cascading delay from CMS/FS Soil. • Increased the duration of DOI Approval Process for ROD from 60 to 90edays. • Adjusted schedule to reflect current anticipated approval date and scope of the Final Soil RFI/RI Work Plan. Added a hard link (similar to the Groundwater ROD) between approval of the CMS/FS and the start of the Proposed Plan.