



United States Department of the Interior

BUREAU OF LAND MANAGEMENT
FISH AND WILDLIFE SERVICE
BUREAU OF RECLAMATION



ELECTRONIC SUBMISSION

May 3, 2010

Leo S. Leonhart, PhD, RG, ChG
Principal Hydro geologist
HARGIS & ASSOCIATES, INC.
1820 E. River Road, Suite 220
Tucson, Arizona 85718-5991

Dear Dr. Leonhart:

Subject: Cultural Resource Surveys

During the April 15, 2010 Topock Technical Working Group (TWG) conference call, an inquiry regarding the extent of the cultural resource surveys was made by Fort Mohave Indian Tribe representatives. A follow up e-mail was provided by you on April 16, 2010, reiterating the content of that inquiry. This letter provides a response concerning the nature and extent of cultural resources surveys performed both within and outside the expanded Topock Remediation Project Area of Potential Effects (APE). For your convenience, attached are Applied Earthworks' survey coverage map and description from their report: Archaeological and Historical Investigations, Third Addendum: Survey of the Original and Expanded APE for Topock Compressor Station Site Vicinity, San Bernardino County, California, Mohave County, Arizona by Applied Earthworks (2007).

The information provided below reiterates the inquiry made during the TWG regarding the extent of the cultural survey and provides the response to that inquiry. This information has been relayed by the PG&E Archaeologist, Glen Caruso.

1. Areas within the Compressor Station fence line?
 - A. Areas within the Topock Compressor Station fence line have not been surveyed.
2. Areas within the PG&E property boundary?
 - A. The PG&E property outside the Compressor Station fence line was examined at a complete and intensive level.

Dr. Leo Leonhart
Page 2 of 2

3. Areas outside of the PG&E property where remedial activities are either ongoing or being considered (including ER & the Compressor Station)?

A. All other areas of APE were also examined at a complete and intensive level.

4. Areas outside the expanded APE that may be part of the final Remedy?

A. For those areas included within Alternative E that are outside the APE, the Department of Toxics Substances Control (DTSC) requested a preliminary field reconnaissance and record search. A record search was conducted at both Arizona and California information centers. Relevant historical and anthropological primary reference sources were reviewed and relevant historical maps and photos were also examined. The field reconnaissance consisted of a preliminary or 'windshield' examination, i.e., visual observations of those areas from existing public access roads.

In response to your question regarding the proper protocol for filing your request for information on cultural resources related to Topock Remediation Project, in the future, please feel free to contact the Lake Havasu Field Office Archaeologist, George Ward Shannon, Jr., Ph.D., RPA at (928) 505-1255.

If you have any questions regarding this, please contact me at (303) 445-2502.

Sincerely,



Pamela S. Innis
DOI Topock Remedial Project Manager

cc: Aaron Yue, DTSC
Karen Baker, DTSC
Yvonne Meeks, PG&E
Carrie Marr, USFWS
Jeff Smith, BOR
Cathy Wolff-White, BLM
Rick Newill, DOI Consultant
PG&E Topock TWG Members

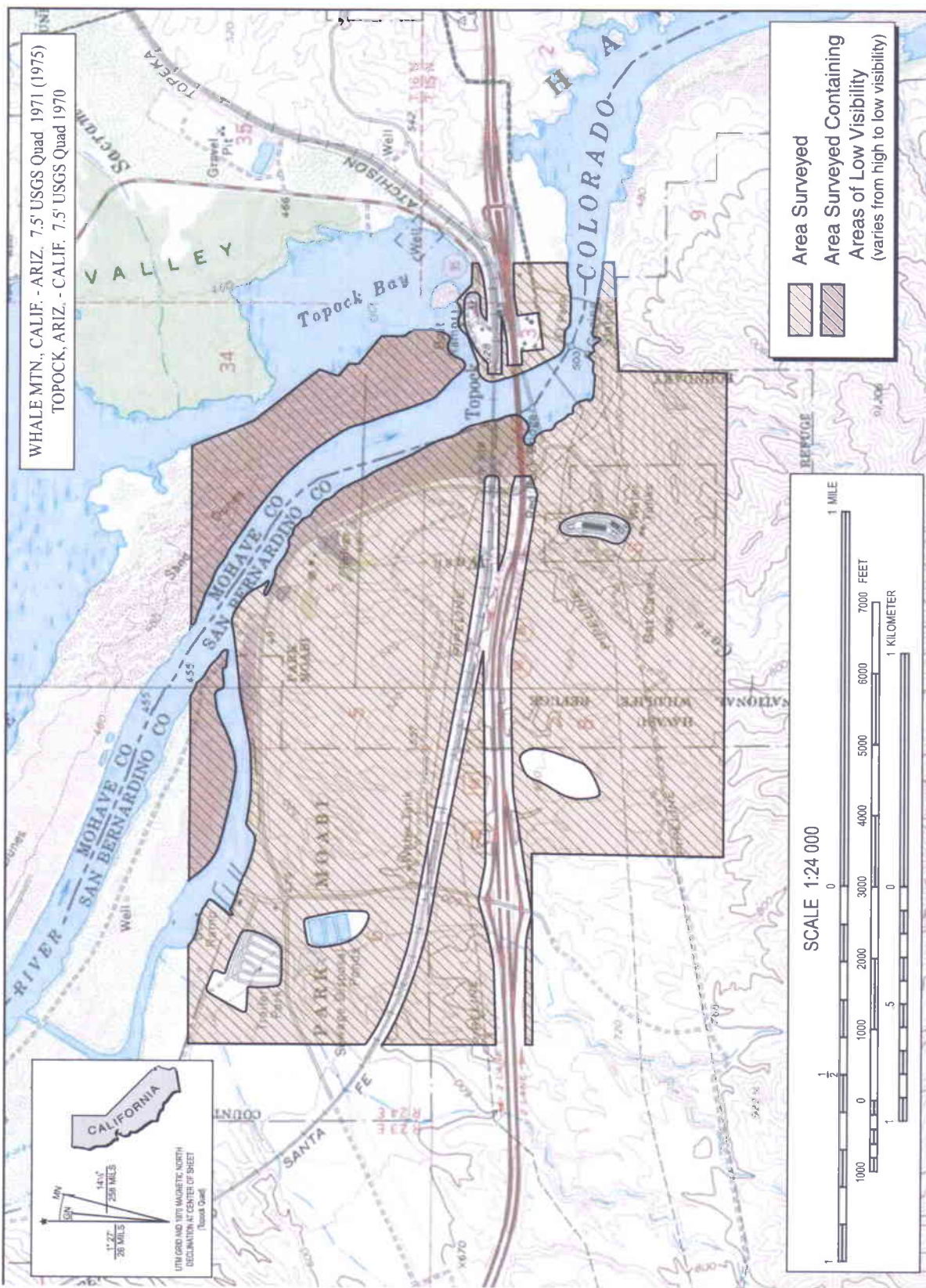


Figure 3 Area surveyed for cultural resources within the IM No. 3 Project APE.

2 METHODS

Complete and intensive archaeological surveys of the Original 155-acre APE and the Expanded 1,660-acre APE were conducted by three AE archaeologists between September 21 and December 23, 2004. Survey transects were spaced a maximum of 10 meters (33 ft) apart due to the isolated and discrete nature of many of the archaeological sites within the Project area. All landforms likely to contain or exhibit prehistoric or historical archaeological resources were inspected carefully to ensure that all visible, potentially significant resources were discovered and documented. Additionally, surveyors investigated any unusual landforms, contours, soil changes, features (e.g., road cuts, drainages), and other potential site markers. Ground visibility throughout the 1,815-acre was generally excellent (100%); however, along some of the major arroyos draining into the Park Moabi Slough and/or the Colorado River, dense stands of tamarisk reduced ground surface visibility from 50 to 75 percent. It should be noted that areas of private property or those that have been developed with standing structures were not surveyed (see Figure 3).

When encountered, all potentially significant archaeological and historical resources were recorded on State of California Department of Parks and Recreation Archaeological Site Forms (DPR 523 [1995]). Systematic efforts were made to characterize and define the aerial extent of each resource; site integrity was also assessed as either retained (i.e., intact) or impaired (damaged). Site locations then were plotted on the appropriate 1:24,000 scale USGS topographic map using a Garmin handheld Global Positioning System (GPS) unit using UTM NAD 27. Sketch maps of each archaeological site were drawn to scale, and color print photographs were also taken of each site, as well as of any extant cultural features and exceptional artifacts present. Any discrete cultural features important to site interpretation were also fully documented and photographed. When necessary, the records of sites previously documented CH2M Hill were updated. No artifacts were collected during the archaeological surveys.

List of Topock Project Documents

Former Project Schedule	Publication Date	File Size
Topock Remediation Detailed Project Schedule, Version 7	Nov-09	466 KB
Summary of Key Schedule Changes Since August 15, 2007 Revision 6	May-09	117 KB
Topock Remediation Detailed Project Schedule, Version 6	May-09	415 KB
Detailed Schedule	Nov-08	872 KB
Project Timeline for Groundwater Remedy Selection	Nov-08	39 KB
Condensed Project Schedule	Nov-08	34 KB
Topock Detailed Schedule	Jun-08	1.1 MB
Topock Condensed Schedule - Critical Path Analysis	Jun-08	38 KB
Detailed Schedule	Apr-08	1.2 MB
Condensed Schedule - Critical Path Analysis	Apr-08	33 KB
Current Project Schedule	Publication Date	File Size
Topock Remediation Detailed Project Schedule, Version 8	Mar-10	4.8 MB
Summary of Key Schedule Changes, Revision 8	Mar-10	145 KB
EIR Documents	Publication Date	File Size
Notice of Availability of the Draft EIR, Draft Statement of Basis, and Proposed Plan	Jun-10	40 KB
Groundwater Proposed Plan for the Topock Compressor Station	Jun-10	276 KB
Draft Environmental Impact Report for the Topock Compressor Station Groundwater Remediation Project, California Department of Toxic Substances Control - Chapters 1 through 3	Apr-10	2.8 MB
Draft Environmental Impact Report for the Topock Compressor Station Groundwater Remediation Project, California Department of Toxic Substances Control - Chapter 4	Apr-10	39.3 MB
Draft Environmental Impact Report for the Topock Compressor Station Groundwater Remediation Project, California Department of Toxic Substances Control - Chapters 5 through 12	Apr-10	4.4 MB
Draft Environmental Impact Report for the Topock Compressor Station Groundwater Remediation Project, California Department of Toxic Substances Control - Appendices	Apr-10	89.3 MB
Draft Statement of Basis For a Preferred Groundwater Remedy, PG&E Topock Compressor Station Needles, California EPA ID Number CAT080011729	Apr-10	1.3 MB
California Environmental Quality Act Initial Study - Template	Nov-08	325 KB
Article 9. Contents of Environmental Impact Reports	Nov-08	88 KB
Topock Final Scoping Report	Aug-08	14.1 MB
EIR Scoping Meeting Comments	Publication Date	File Size
Big River Scoping Meeting Transcript	Jun-08	94 KB
Lake Havasu City Scoping Meeting Transcript	Jun-08	90 KB

EXHIBIT 9

Needles Scoping Meeting Transcript	May-08	115 KB
Yuma Scoping Meeting Transcript	May-08	78 KB
Public Notices	Publication Date	File Size
Notice of Preparation Public Notice	May-08	60 KB
Fact Sheets	Publication Date	File Size
June 2010 Fact Sheet, PG&E Topock Project Update	Jun-10	377 KB
March 2010 Fact Sheet, PG&E Topock Environmental Investigation Update	Mar-10	1.6 MB
July 2009 Fact Sheet - PG&E Topock Environmental Investigation Update	Jul-09	1.5 MB
May 2008 Fact Sheet - PG&E Topock Compressor Station Project Availability of a Notice of Preparation	May-08	524 KB
February 2008 Fact Sheet - Pacific Gas and Electric Company (PG&E) Work Notice: Topock Groundwater Study – Upcoming Well Drilling	Feb-08	1.1 MB
February 2007 Fact Sheet - Notice of Upcoming Groundwater Investigation Activities	Feb-07	664 KB
October 2006 Fact Sheet - Pacific Gas and Electric Company (PG&E) Topock Project Update	Oct-06	463 KB
July 2005 Fact Sheet - Pacific Gas and Electric Company (PG&E) Topock Project Begins Interim Measure No. 3 Treatment Operations	Jul-05	989 KB
August 2004 Fact Sheet - PG&E's Topock Compressor Station in Needles Directed to Expand Cleanup Operations	Aug-04	869 KB
May 2004 Fact Sheet - Interim Measures at the PG&E Topock Compressor Station	May-04	1.4 MB
September 1999 Fact Sheet - Environmental Investigation Results	Sep-99	256 KB
May 1998 Fact Sheet - The Public's Role During the Permit Process	May-98	1.3 MB
March 1998 Fact Sheet - Hazardous Waste Investigation	Mar-98	338 KB
Public Involvement Plans	Publication Date	File Size
U.S. Department of Interior Topock Community Involvement Plan	Apr-10	2.4 MB
Public Participation Plan Addendum	Jul-09	4.1 MB
Updated Public Participation Plan	Feb-07	4.8 MB
Public Participation Plan	Jun-98	799 KB
Other Outreach Documents	Publication Date	File Size
Topock Open House/Public Meeting Poster	Jun-10	1.1 MB
Needles Open House/Public Meeting Poster	Jun-10	1.2 MB
Lake Havasu City Open House/Public Meeting Poster	Jun-10	1.1 MB
Parker Open House/Public Meeting Poster	Jun-10	1.0 MB
Topock Public Meeting Flyers	Jul-09	537 KB
Notice of Preparation	May-08	972 KB

[Archive of What's New Bullets](#)
[Press Release February 22, 2005](#)
[Press Release March 08, 2004](#)
[News Articles](#)

Mar-05	28 KB
Feb-05	27 KB
Mar-04	27 KB
Sep-03	1.6 MB

RCRA Facility Assessment (RFA)

[RCRA Facility Assessment Questionnaire](#)
[RCRA Facility Assessment](#)

Publication Date	File Size
Sep-06	4.8 MB
Aug-87	1.2 MB

Site Investigations: RFI/RI Reports **RFI Report Volume 1**

[Proposal for Addendum to RFI/RI, Vol 1 - Site Background and History](#)
[RFI/RI Volume 1 - Appendix B](#)
[RFI/RI Volume 1 - Site Background and History with Appendix A](#)
[RFI/RI Volume 1 - Appendix C](#)
[Response to Additional DTSC Comments on the RFI/RI, Volume 1 Site Background and History](#)
[RFI/RI Volume 1 - DTSC Response to Comments](#)
[RFI/RI Volume 1 - DTSC Response to Comments Cover](#)

Publication Date	File Size
Aug-07	54 KB
Aug-07	68 KB
Aug-07	55 KB
Aug-07	59 KB
Aug-07	210 KB
May-07	204 KB
May-07	38 KB

RFI Report Volume 2

[RCRA Facility Investigation/ Remedial Investigation Report Volume 2 Addendum Text, Tables, Figures and Appendices A - D and F - H](#)
[RCRA Facility Investigation/ Remedial Investigation Report Volume 2 Addendum Appendix E](#)
[Revised Final RCRA Facility Investigation/Remedial Investigation \(RFI/RI\), PG&E Topock Compressor Station, Needles, California - Hydrogeologic Characterization and Results of Groundwater and Surface Water Investigation - Text Tables and Figures](#)
[Revised Final RCRA Facility Investigation/Remedial Investigation \(RFI/RI\), PG&E Topock Compressor Station, Needles, California - Hydrogeologic Characterization and Results of Groundwater and Surface Water Investigation - Appendices A - H2 and I - J](#)
[Revised Final RCRA Facility Investigation/Remedial Investigation \(RFI/RI\), PG&E Topock Compressor Station, Needles, California - Hydrogeologic Characterization and Results of Groundwater and Surface Water Investigation - Appendices H3 - H6](#)
[Comments on July 2008 RCRA Facility Investigation and Remedial Investigation Report Volume 2 at PG&E, Topock Compressor Station, Needles, California \(EPA ID NO. CAT080011729\)](#)

Publication Date	File Size
Jun-09	29 KB
Jun-09	6 KB
Feb-09	36 KB
Feb-09	64 KB
Feb-09	23 KB
Oct-08	1 KB

Response to Comments Related to the Site History Portion of the RFI Report Dated February 2005	Jul-06	4 KB
--	--------	------

Site Investigations: Other Documents Related to Soil Investigation

Soil Investigation Work Plan Part A	Publication Date	File Size
Calculation of Soil Screening Levels for Protection of Groundwater at the PG&E Topock Compressor Station	Aug-08	0 KB
RCRA Facility Investigation/Remedial Investigation Soil Investigation Work Plan Part A	Nov-06	59 KB

Soil Investigation Work Plan Part B	Publication Date	File Size
Part B Phase 1 Proposal, PG&E Topock Compressor Station, Needles, California	Sep-08	4 KB
Topock Part B Soil Investigation Work Plan	Dec-07	57 KB

Other Soil-Related Studies and Documents	Publication Date	File Size
Final Technical Memorandum 4: Ecological Comparison Values for Additional Detected Chemicals in Soil, PG&E Topock Compressor Station, Needles, California	Aug-09	0 KB
Soil Background Investigation at the PG&E Topock Compressor Station, Needles, California	May-09	4 KB
Final Soil and Sediment Data Usability Assessment Technical Memorandum, PG&E Topock Compressor Station	Aug-08	2 KB
Responses to Agency Comments on Soil and Sediment Data Usability Assessment Technical Memorandum, PG&E Topock Compressor Station	Nov-07	0 KB
Soil and Sediment Data Useability Assessment Technical Memorandum	May-06	5 KB
Interim Measures No. 3 Closure Planning - Baseline Soil Sampling Work Plan	Feb-06	3 KB

Site Investigations: Other Documents Related to Groundwater Investigations

Arizona Groundwater Investigation	Publication Date	File Size
Installation Report for Wells on the Arizona Shore of the Colorado River at the PG&E Topock Compressor Station, Needles, California	Aug-08	3 KB
Work Plan for Well Installation and Groundwater Characterization on Arizona Shore of the Colorado River at Topock, Arizona	Jan-07	10 KB

Groundwater and Surface Water Monitoring Plans

	Publication Date	File Size
Letter to DTSC, Subject: Updates and Modifications to Groundwater Monitoring Program	Jul-07	0 KB

Site Access and Sampling Procedures for Groundwater Monitoring Wells Located Near Potential Southwestern Willow Flycatcher Habitat, Rev. 3	Apr-06	1 KB
Response to DTSC Comments on Metals Sampling	Nov-05	1 KB
Proposed Revision to Surface Water Sampling Program	Sep-05	1 KB
Spill Prevention, Containment and Control Measures for Monitoring Well Sampling - SOP	Jul-05	0 KB
Revised Sampling Plan and SOP for Depth-Specific Surface Water Sampling	Jul-05	1 KB
Contingency Planning for Surface Water Monitoring	Jun-05	0 KB
Appendix B to Final Workplan for Chromium Sample Filtration Comparison Test	Apr-05	0 KB
Monitoring Plan for Groundwater and Surface Water Monitoring	Apr-05	6 KB
Sampling Analysis and Field Procedures Manual	Mar-05	5 KB
Final Workplan for Chromium Sample Filtration Test	Mar-05	0 KB
Contingency Planning for Sentry Well Groundwater Monitoring (Copy)	Feb-05	0 KB
Sampling and Analysis Plan, Groundwater and Surface Water Monitoring	Jul-04	5 KB
Sampling Plan Addendum for Evaluating Monitoring Well Sampling Methods	Feb-04	1 KB
Sampling and Analysis Plan for Quarterly Groundwater Monitoring	Sep-03	0 KB
	Publication Date	File Size
Groundwater and Surface Water Monitoring Reports		
Fourth Quarter 2009 and Annual Interim Measures Performance Monitoring and Site-Wide Groundwater and Surface Water Monitoring Report	Mar-10	31 KB
Third Quarter 2009 IM Performance Monitoring and Site-Wide Groundwater and Surface Water Monitoring Report PG&E Topock Compressor Station, Needles, California	Nov-09	6 KB
Second Quarter 2009 IM Performance Monitoring and Site-Wide Groundwater and Surface Water Monitoring Report PG&E Topock Compressor Station, Needles, California	Aug-09	5 KB
Groundwater and Surface Water Monitoring Report, First Quarter 2009, PG&E Topock Compressor Station, Needles, California	Jun-09	1 KB
Groundwater and Surface Water Monitoring Report, Fourth Quarter 2008 and Annual Summary, PG&E Topock Compressor Station, Needles, California	Mar-09	1 KB
Groundwater and Surface Water Monitoring Report, Third Quarter 2008, PG&E Topock Compressor Station, Needles, California	Jan-09	47 KB
Groundwater and Surface Water Monitoring Report, Second Quarter 2008, PG&E Topock Compressor Station, Needles, California	Aug-08	5 KB
Groundwater and Surface Water Monitoring Report, First Quarter 2008, PG&E Topock Compressor Station, Needles, California	Jun-08	4 KB
Groundwater and Surface Water Monitoring Report, Fourth Quarter 2007 and Annual Summary	Mar-08	4 KB
Groundwater and Surface Water Monitoring Report, Third Quarter 2007, PG&E Topock Compressor Station, Needles, California	Dec-07	1 KB

GW and Surface Water Monitoring Report, 2nd Quarter 2007	Aug-07	29 KB
Groundwater and Surface Water Monitoring Report, First Quarter 2007	May-07	2 KB
Groundwater and Surface Water Monitoring Report, Fourth Quarter 2006	Apr-07	20 KB
Groundwater and Surface Water Monitoring Report, Third Quarter 2006	Dec-06	43 KB
Groundwater and Surface Water Monitoring Report, 2nd Quarter 2006	Sep-06	2 KB
First Quarter 2006 Groundwater and Surface Water Monitoring Report	Jun-06	36 KB
Fourth Quarter 2005 Groundwater and Surface Water Monitoring Report	Mar-06	28 KB
Third Quarter 2005 Groundwater and Surface Water Monitoring Report	Dec-05	33 KB
Second Quarter 2005 Groundwater and Surface Water Monitoring Report	Aug-05	24 KB
First Quarter 2005 Groundwater and Surface Water Monitoring Report	May-05	18 KB
Chromium Sample Filtration Comparison Test Report	May-05	5 KB
Fourth Quarter 2004 Groundwater and Surface Water Monitoring Report	Mar-05	2 KB
Third Quarter 2004 Groundwater and Surface Water Monitoring Report	Dec-04	2 KB
Second Quarter 2004 Groundwater and Surface Water Sampling Results	Aug-04	5 KB
First Quarter 2004 Groundwater and Surface Water Monitoring Report	May-04	0 KB
Fourth Quarter 2003 Groundwater and Surface Water Monitoring Report	Feb-04	1 KB
Third Quarter 2003 Groundwater and Surface Water Monitoring Report	Oct-03	1 KB
Second Quarter 2003 Groundwater and Surface Water Monitoring Report	Sep-03	0 KB
First Quarter 2003 Groundwater and Surface Water Monitoring Report	Jun-03	0 KB
Fourth Quarter 2002 Groundwater and Surface Water Monitoring Report	Mar-03	0 KB
Third Quarter 2002 Groundwater and Surface Water Monitoring Report	Nov-02	0 KB
Second Quarter 2002 Groundwater and Surface Water Monitoring Report	Aug-02	0 KB
First Quarter 2002 Groundwater and Surface Water Monitoring Report	May-02	0 KB
	Publication Date	File Size
California Groundwater Investigation		
Well Installation Report for Slant Wells MW-52 and MW-53 - Text and Tables	Jun-07	0 KB

Well Installation Report for Slant Wells MW-52 and MW-53 - Appendices and Figures	Jun-07	8 KB
Addendum to Work Plan for California Slant Drilling Activities Beneath the Colorado River	Dec-06	3 KB
Revised Biological Assessment for Slant Drilling Activities and Seismic Survey Activities	Dec-06	1 KB
Streambed Alteration Agreement (SAA) Notification of Slant Drilling Well Installation Activities	Nov-06	4 KB
Work Plan for Additional Groundwater Characterization Beneath the Colorado River by Slant Boring in California	Oct-06	8 KB

Other Groundwater-Related Studies and Documents

	Publication Date	File Size
Tech Memos: In Situ Test Plan, Core Test Plan, and Geotechnical Test Plan	Jun-04	5 KB
Exploratory Drilling Results and Evaluation of Groundwater Pilot Test Extraction Sites	Dec-03	1 KB
Tech Memo: Summary Workplan Groundwater Exploratory Boring and Test	Nov-03	1 KB
Draft Tech Memo: Groundwater Pilot Study	Sep-03	0 KB

East Ravine Investigation

	Publication Date	File Size
Revised East Ravine Work Plan	Jul-08	14 KB
Responses to Comments on the Work Plan for East Ravine Groundwater Investigation, PG&E Topock Compressor Station, Needles, CA	Feb-08	2 KB
Work Plan for East Ravine Groundwater Investigation, PG&E Topock Compressor Station, Needles, California	Dec-07	5 KB

Site Investigations: Other Studies **Pore Water Seepage Study**

	Publication Date	File Size
Pore Water and Seepage Study Report	Mar-06	20 KB
Addendum to Revised Pore Water and Seepage Study Work Plan	Dec-05	0 KB
Summary of Pore Water Sampling Phase 1	Dec-05	3 KB
Addendum to PWSS Work Plan - Revised Contingency Plan	Dec-05	0 KB
Pore Water and Seepage Study Notice of Exemption	Nov-05	1 KB
Sampling and Analysis Plan for Evaluating Reducing Geochemical Conditions in River Sediment, Pore Water and Seepage Study	Nov-05	1 KB
Revised Pore Water and Seepage Study Work Plan	Oct-05	7 KB
Pore Water and Seepage Study Work Plan	Sep-05	6 KB
Pore Water and Seepage Study Overview	Jul-05	8 KB
Conceptual Approach for a Pore Water Sampling and Seepage Study	Jun-05	0 KB

Chromium Isotope Study

Publication	File Size
--------------------	------------------

Chromium Isotope Study Summary Report, PG&E Topock Compressor Station, Needles, California	Date May-08	3 KB
Phase II Chromium Isotope Study Work Plan PG&E Topock Compressor Station	Apr-07	1 KB
Revised Chromium Isotope Study Workplan	Apr-06	1 KB
Chromium Isotope Study Workplan	Mar-06	2 KB
Bedrock Investigations	Publication Date	File Size
Summary Report for Hydraulic Testing in Bedrock Wells. Topock Compressor Station, Needles, California	Jan-08	19 KB
Work Plan for Hydraulic testing in Bedrock Wells	Nov-06	2 KB
Review of Bedrock Groundwater Conditions Technical Memorandum	Mar-06	30 KB
Other RFI-Related Documents	Publication Date	File Size
Technical Memorandum - Summary of Colorado River Bridge Pier Construction and Hydrogeologic Assessment	Oct-08	16 KB
Final Land Use Memorandum, PG&E Topock Compressor Station, Needles, California	Nov-07	0 KB
Tech Memo re: Closure Information for Former 300B Pipeline Liquids Tank at PG&E Topock Compressor Station	Apr-07	3 KB
Technical Memorandum: Well Disposition Evaluation for Inactive Supply Well PGE-7	Feb-06	0 KB
Risk Assessment: Risk Evaluation Reports	Publication Date	File Size
Human and Ecological Risk Assessment of Groundwater Impacted by Activities at Solid Waste Management Unit (SWMU) 1/Area of Concern (AOC) 1 and SWMU 2	Dec-09	17.7 MB
Risk Assessment: Risk Assessment Work Plan		
Risk Assessment Work Plan (RAWP)	Publication Date	File Size
Risk Assessment Work Plan Addendum	Feb-09	0 KB
Human Health and Ecological Risk Assessment Work Plan, PG&E Topock Compressor Station, Needles, California	Aug-08	12 KB
Risk Assessment Work Plan Comments for Pacific Gas and Electric Company (PG&E), Topock Compressor Station, Needles, California (EPA ID NO. CAT080011729)	Mar-08	5 KB
Topock Compressor Station Ecological Exposure Parameters, Bioaccumulation Factors, and Toxicity Reference Values	Jun-07	694 KB
Topock Compressor Station Revised Technical Memorandum on Ecological Conceptual Site Models, Assessment Endpoints, and Receptors of Concern	Apr-07	536 KB

Interim Measures

[AOC 4 Debris Ravine Removal Action](#)

[Interim Measure \(IM\) 1](#)

[IM-2 Batch Treatment System Planning, Operations and Monitoring](#)

[IM-3 Treatment System Planning](#)

[IM-3 Treatment System Construction](#)

[IM-3 Treatment System Operations and Performance Monitoring](#)

[IM-3 Injection Area Characterization](#)

[IM-3 WDR Reports and Compliance Monitoring](#)

EIR Notice of Preparation and Fact Sheet

[Notice of Preparation May 2008](#)

[Public Notice - Notice of Preparation](#)

[Fact Sheet - Notice of Preparation](#)

Publication Date	File Size
May-08	972 KB
May-08	60 KB
May-08	524 KB

EIR Scoping Meeting Comments

[Big River Scoping Meeting Transcript](#)

[Lake Havasu City Scoping Meeting Transcript](#)

[Needles Scoping Meeting Transcript](#)

[Yuma Scoping Meeting Transcript](#)

[Palm Desert Scoping Meeting Transcript](#)

Publication Date	File Size
Jun-08	94 KB
Jun-08	90 KB
May-08	115 KB
May-08	78 KB
May-08	85 KB

CEQA Documents for Interim Measures

[Initial Study and Proposed Negative Declaration, Renewal of Waste Discharge Requirements for Injection of Treated Water](#)

[CEQA Notice of Exemption for Interim Measures No. 3](#)

[CEQA Notice of Exemption for Interim Measures No. 2](#)

Publication Date	File Size
Aug-06	2.6 MB
Jun-04	194 KB
Feb-04	132 KB

CEQA Documents for In-Situ Studies

[Biological Resources Completion report for the Upland In-Situ Pilot Test and Associated Activities: PG&E Topock Compressor Station, Needles, California](#)

[DTSC Response to NAHC Comments on Upland In-situ Pilot Test, Aquifer Testing, Groundwater Well Maintenance And Well Decommissioning](#)

[Final Negative Declaration - Topock Upland In-situ Pilot Test, Aquifer Testing, Groundwater Well Maintenance and Well Decommissioning](#)

[Negative Declaration for Topock Upland In Situ Pilot Test, Aquifer Testing, Groundwater Well Maintenance And Well Decommissioning](#)

Publication Date	File Size
Apr-08	1.2 MB
Mar-07	192 KB
Mar-07	16 KB
Mar-07	16 KB

DTSC Response to HNWR Comments on Upland In-situ Pilot Test, Aquifer Testing, Groundwater Well Maintenance And Well Decommissioning	Mar-07	42 KB
Notice of Determination - Topock Upland In-situ Pilot Test, Aquifer Testing, Groundwater Well Maintenance and Well Decommissioning	Mar-07	202 KB
DTSC Response to FMIT Comments on Upland In-situ Pilot Test, Aquifer Testing, Groundwater Well Maintenance And Well Decommissioning	Mar-07	416 KB
Initial Study for Topock Upland In Situ Pilot Test, Aquifer Testing, Groundwater Well Maintenance And Well Decommissioning	Mar-07	9.5 MB
DTSC Notice of Public Comment Period Re: for Topock Upland In Situ Pilot Test, Aquifer Testing, Groundwater Well Maintenance And Well Decommissioning	Feb-07	23 KB
Notice of Public Comment Period - Topock Upland In-Situ Pilot Test, Aquifer Testing, Groundwater Well Maintenance and Well Decommissioning	Feb-07	32 KB
Initial Study - Topock Upland In-Situ Pilot Test, Aquifer Testing, Groundwater Well Maintenance and Well Decommissioning	Jan-07	9.5 MB
Initial Study (Floodplain Area)	Nov-05	774 KB
Public Notice (Floodplain Area)	Oct-05	23 KB
Draft Negative Declaration (Floodplain Area)	Oct-05	21 KB
CEQA IM3 Project Description - July 8, 2004	Jul-04	539 KB
CEQA Other (Non-EIR) Documents	Publication Date	File Size
Notice of Intent to Adopt a Negative Declaration for Renewal of Waste Discharge Requirements	Jul-06	173 KB
Notice of Public Hearing for Discharge Permit	Jul-06	56 KB
CMS/FS Work Plan	Publication Date	File Size
Final Corrective Measures/Feasibility Study Work Plan	Mar-08	2.5 MB
Responses to Agency and Stakeholder Comments on the Corrective Measures/Feasibility Study Work Plan	Oct-07	242 KB
Corrective Measures / Feasibility Study Work Plan	Jun-07	2.4 MB
DTSC CMS Work Plan Comments	May-07	84 KB
CMS/FS Report	Publication Date	File Size
Final Groundwater Corrective Measures Study/ Feasibility Study Report for SWMU 1/AOC 1 and AOC 10 Chromium in Groundwater PG&E Topock Compressor Station Needles, California - Text, Tables and Figures	Dec-09	9.3 MB

Final Groundwater Corrective Measures Study/ Feasibility Study Report for SWMU 1/AOC 1 and AOC 10 Chromium in Groundwater PG&E Topock Compressor Station Needles, California - Appendices	Dec-09	68.2 MB
---	--------	---------

Core Testing

[Summary of Results - MW-56 Anaerobic Core Hexavalent Chromium Uptake Capacity, PG&E Topock Compressor Station, Needles, California](#)

[Work Plan for Testing Anaerobic Core Samples](#)
[Work Plan for Collecting Additional Anaerobic Core Samples](#)

Publication Date	File Size
Jul-09	232 KB
Jun-06	437 KB
Feb-06	207 KB

Groundwater Evaluations and Modeling

[Hexavalent Chromium Holding Time Study Results](#)
[Addendum to Work Plan for Hydraulic Testing in Bedrock Wells](#)
[Workplan for Hydraulic Testing in Bedrock Wells](#)
[Groundwater Model Report, Section 4.4, Initial Hydraulic Parameter Assignments](#)
[Groundwater Model Report, Section 2, Site Conceptual Model](#)
[Evaluation of Sampling Frequencies of Topock GMP Monitoring Wells Using Monitoring and Remediation Optimization System \(MAROS\) Software](#)
[Groundwater Model Update Report](#)
[Numerical Groundwater Flow Model Simulation of Interim Measures Extraction](#)
[IM2 Groundwater Elevation and Hydraulic Gradient Error Analysis](#)
[Evaluation of Site-Wide Groundwater Data for Hydraulic Gradient Mapping](#)

Publication Date	File Size
Jan-08	87 KB
Dec-06	4.6 MB
Nov-06	1.6 MB
Aug-06	243 KB
Aug-06	16.5 MB
Jul-06	171 KB
Jul-05	12.7 MB
Jul-05	2.5 MB
Jun-05	1.2 MB
Jun-05	904 KB

Reference Documents

[Lower Colorado River National Wildlife Refuges Comprehensive Management Plan 1994 - 2014](#)

Publication Date	File Size
Sep-94	14.3 MB

In-Situ Pilot Studies

Floodplain In-Situ Pilot Study

[Third Quarter 2009 Monitoring Report for the Floodplain Reductive Zone In-Situ Pilot Test, PG&E Topock Compressor Station Environmental Investigation and Cleanup Project, Needles, California](#)
[Second Quarter 2009 Monitoring Report for the Floodplain Reductive Zone In-Situ Pilot Test, PG&E Topock Compressor Station Environmental Investigation and Cleanup Project, Needles, California](#)

Publication Date	File Size
Nov-09	8 KB
Jul-09	1 KB

First Quarter 2009 Monitoring Report for the Floodplain Reductive Zone In-Situ Pilot Test, PG&E Topock Compressor Station, Needles, California	Apr-09	2 KB
Third Quarter 2008 Monitoring Report for the Floodplain Reductive Zone In-Situ Pilot Test, PG&E Topock Compressor Station, Needles, California	Oct-08	2 KB
Board Order R7-2006-0008 and R7-2007-0014 Floodplain Reductive Zone In Situ Pilot Test Second Quarter 2008 Monitoring Report, PG&E Topock Compressor Station, Needles, California	Jul-08	1 KB
Floodplain Reductive Zone In-Situ Pilot Test Final Completion Report	Mar-08	8 KB
December 2007 and Fourth Quarter 2007 Monitoring Report for the Floodplain Reductive Zone In-Situ Pilot Test	Jan-08	2 KB
Board Order R7-2006-0008 and R7-2007-0014, PG&E Topock Compressor Station, Needles, California, Floodplain Reductive Zone In Situ Pilot Test, November 2007 Monitoring Report	Dec-07	2 KB
Board Order R7-2006-0008 and R7-2007-0014, PG&E Topock Compressor Station, Needles, California, Floodplain Reductive Zone In Situ Pilot Test, October 2007 Monitoring Report	Nov-07	2 KB
Board Order R7-2006-0008 and R7-2007-0014, PG&E Topock Compressor Station, Needles, California, Floodplain Reductive Zone In Situ Pilot Test, September 2007 and Third Quarter 2007 Monitoring Report	Oct-07	3 KB
Arcadis R7-2006-0008 and R7-2007-0014 Floodplain In-Situ Pilot Test Report for August 2007	Sep-07	6 KB
Arcadis R7-2006-0008 and R7-2007-0014 Floodplain In-Situ Pilot Test Report for July 2007	Aug-07	4 KB
Arcadis R7-2006-0008 and R7-2007-0014 Floodplain In-Situ Pilot Test Report for June 2007	Jul-07	4 KB
Request for Reduction of Required Parameter Analysis at the Floodplain Reductive Zone In Situ Pilot Test for Board Order R7-2006-0008	Jun-07	1 KB
Arcadis R7-2006-0008 and R7-2007-0014 Floodplain In-Situ Pilot Test Report for May 2007	Jun-07	5 KB
Arcadis R7-2006-0008 Floodplain In-Situ Pilot Test Report for April 2007	May-07	3 KB
Arcadis R7-2006-0008 Floodplain In-Situ Pilot Test Report for March 2007	Apr-07	3 KB
Arcadis R7-2006-0008 Floodplain In-situ Pilot Test Report for Feb 2007	Mar-07	3 KB
Arcadis R7-2006-0008 Floodplain In-situ Pilot Test Report for Jan 2007	Feb-07	3 KB
Arcadis R7-2006-0008 Floodplain In-situ Pilot Test Report for Nov 2006	Dec-06	1 KB
Arcadis R7-2006-0008 Floodplain In-situ Pilot Test Addendum 3 to Work Plan	Nov-06	1 KB
Arcadis R7-2006-0008 Floodplain In-situ Pilot Test Report for Oct 2006	Nov-06	2 KB
Supplemental Letter Request to HNWR for Approval of Upland In-situ Pilot Test re: PGE-6, PGE-7, PGE-8 and MW-48 Activities	Nov-06	0 KB

Arcadis R7-2006-0008 Floodplain In-situ Pilot Test Report for Sept 2006 - Revised Cover Letter	Oct-06	0 KB
Arcadis R7-2006-0008 Floodplain In-situ Pilot Test Report for Sept 2006	Oct-06	1 KB
August 2006 Monitoring Report for the Floodplain Reductive Zone In-situ Pilot Test	Sep-06	2 KB
July 2006 Monitoring Report for the Floodplain Reductive Zone In-situ Pilot Test	Aug-06	1 KB
60-Day Status Report Floodplain Reductive Zone In-situ Pilot Test	Aug-06	2 KB
Request for Approval of 2nd and 3rd Injection Events, Floodplain Reductive Zone In-situ Pilot Test	Jul-06	1 KB
June 2006 Monitoring Report for the Floodplain Reductive Zone In-situ Pilot Test	Jul-06	2 KB
May 2006 Monitoring Report for the Floodplain Reductive Zone In-Situ Pilot Test, Waste Discharge Requirements, Order No. R7-2006-0008	Jun-06	1 KB
April 2006 Monitoring Report for the Floodplain Reductive Zone In-Situ Pilot Test, Waste Discharge Requirements, Order No. R7-2006-0008	May-06	1 KB
Contingency Plan Floodplain Reductive Zone, In Situ Pilot Test Board Order R7-2006-0008	Apr-06	0 KB
March 2006 and First Quarter 2006 Monitoring Reports for the Floodplain Reductive Zone In-Situ Pilot Test, Waste Discharge Requirements, Order No. R7-2006-0008	Apr-06	6 KB
Addendum 2 to the In-Situ Hexavalent Chromium Reduction Pilot Test Work Plan - Floodplain Reductive Zone Enhancement	Apr-06	0 KB
Arcadis R7-2006-0008 Floodplain In-situ Pilot Test Report for Dec 2006	Jan-06	4 KB
Notice of Determination for In-situ Hexavalent Chromium Reduction Pilot Test Work Plan -- Floodplain Reductive Zone Enhancement	Dec-05	0 KB
Final Addendum to the In-situ Hexavalent Chromium Reduction Pilot Test Work Plan -- Flood Reductive Zone Enhancement	Dec-05	0 KB
Final Addendum to the In-Situ Hexavalent Chromium Reduction Pilot Test Work Plan--Floodplain Reductive Zone Enhancement	Dec-05	0 KB
Biological Assessment - PE-1 Pipeline and Floodplain In-situ Area	Nov-05	5 KB
In-situ Public Notice - Floodplain Area (Copy)	Oct-05	0 KB
Draft Negative Declaration for In-situ Hexavalent Chromium Reduction Pilot Test Work Plan -- Floodplain Reductive Zone Enhancement	Oct-05	0 KB
In-Situ Hexavalent Chromium Reduction Pilot Test Work Plan--Floodplain Reductive Zone Enhancement	Aug-05	3 KB
Initial Study - Floodplain Area (Copy)	Nov-03	1 KB
Draft Negative Declaration - Floodplain Area (Copy)	Oct-03	0 KB
Upland Area In-Situ Pilot Study	Publication Date	File Size
Third Quarter 2009 Monitoring Report for the Upland Reductive Zone In-Situ Pilot Test, PG&E Topock Compressor Station Environmental Investigation and Cleanup Project, Needles, California	Dec-09	12 KB

Second Quarter 2009 Monitoring Report for the Upland Reductive Zone In-Situ Pilot Test, PG&E Topock Compressor Station Environmental Investigation and Cleanup Project, Needles, California	Jul-09	3 KB
First Quarter 2009 Monitoring Report for the Upland Reductive Zone In-Situ Pilot Test, PG&E Topock Compressor Station, Needles, California	Apr-09	3 KB
November 2008 Monitoring Report for the Upland Reductive Zone In-Situ Pilot Test, PG&E Topock Compressor Station, Needles, California	Dec-08	3 KB
October 2008 Monitoring Report for the Upland Reductive Zone In-Situ Pilot Test, PG&E Topock Compressor Station, Needles, California	Nov-08	3 KB
September 2008 Monitoring Report for the Upland Reductive Zone In-Situ Pilot Test, PG&E Topock Compressor Station, Needles, California	Oct-08	3 KB
Board Order R7-2007-0015 Upland In-Situ Pilot Test August 2008 Monitoring Report, PG&E Topock Compressor Station, Needles, California	Sep-08	3 KB
Board Order R7-2007-0015 Upland In-Situ Pilot Test July 2008 Monitoring Report, PG&E Topock Compressor Station, Needles, California	Aug-08	3 KB
Board Order R7-2007-0015 Upland In-Situ Pilot Test June 2008 Monitoring Report, PG&E Topock Compressor Station, Needles, California	Jul-08	2 KB
February 2008 Monitoring Report for the Upland Reductive Zone In-Situ Pilot Test	Mar-08	2 KB
Board Order R7-2007-0015 PG&E Topock Compressor Station, Needles California Upland In-Situ Pilot Test January 2008 Monitoring Letter	Feb-08	0 KB
Board Order R7-2007-0015, PG&E Topock Compressor Station, Needles, California, Upland In-Situ Pilot Test, November 2007 Monitoring Letter	Dec-07	0 KB
Board Order R7-2007-0015, PG&E Topock Compressor Station, Needles, California, Upland In-Situ Pilot Test, October 2007 Monitoring Letter	Nov-07	0 KB
Board Order R7-2007-0015, PG&E Topock Compressor Station, Needles, California, Upland In-Situ Pilot Test, DRAFT September 2007 Monitoring Letter	Oct-07	0 KB
Arcadis R7-2007-0015 Upland In-Situ Pilot Test Report for August 2007	Sep-07	0 KB
Arcadis R7-2007-0015 Upland In-Situ Pilot Test Report for July 2007	Aug-07	0 KB
Arcadis R7-2007-0015 Upland In-Situ Pilot Test Report for June 2007	Jul-07	0 KB
Arcadis R7-2007-0015 Upland In-Situ Pilot Test May 2007 Monitoring Letter	Jun-07	0 KB
Arcadis R7-2007-0015 Upland In-Situ Pilot Test April 2007 Monitoring Letter	May-07	0 KB
Arcadis R7-2007-0015 Upland In-Situ Pilot Test Contingency Plan	Apr-07	1 KB

Arcadis R7-2007-0015 Upland In-Situ Pilot Test March 2007 Monitoring Letter	Apr-07	0 KB
Negative Declaration - Topock Upland In-situ Pilot Test, Aquifer Testing, Groundwater Well Maintenance and Well Decommissioning Workplan	Mar-07	0 KB
Clarification of Upland Insitu Work Plan - Sampling Confirmation	Feb-07	0 KB
Initial Study - Topock Upland In-situ Pilot Study, Aquifer Testing, Groundwater Well Maintenance and Well Decommissioning	Jan-07	10 KB
Board Order R7-2005-0015 PG&E Topock Compressor Station, Needles California Upland In-Situ Pilot Test December 2007 and Fourth Quarter 2007 Monitoring Letter	Jan-07	0 KB
Letter Request to HNWR for Approval of Upland In-situ Pilot Test	Oct-06	1 KB
Revised In-Situ Hexavalent Chromium Pilot Test Work Plan Upland Plume Treatment	Sep-06	5 KB
Arcadis Upland In-situ Pilot Test Work Plan - Revised	Sep-06	5 KB
Draft In-Situ Hexavalent Chromium Reduction Pilot Test Work Plan--Upland Plume Treatment (MW-25 Area)	Aug-05	3 KB
Other Corrective Measures Documents and Technical Memos	Publication Date	File Size
Tech Memo: Preliminary Concepts for Soil-Bentonite Cutoff Wall	Apr-04	300 KB
Background Study		
Background Study Work Plan	Publication Date	File Size
Background Study - Draft Work Plan: Assessing Background Metals Concentrations in Groundwater	Jun-04	4 KB
Steps 1 and 2 Results	Publication Date	File Size
Preliminary Evaluation of Data for the Groundwater Background Study	Sep-06	5 KB
Background Study, Step 2 Results	Sep-05	5 KB
Background Study, Step 1 Results	Mar-05	26 KB
Steps 3 and 4 Results	Publication Date	File Size
Final Groundwater Background Study, Steps 3 and 4: Revised Final Report of Results - Text, Tables, Figures and Appendices A, C - F	Nov-09	5 KB
Final Groundwater Background Study, Steps 3 and 4: Revised Final Report of Results - Appendix B	Nov-09	0 KB
Groundwater Background Study, Steps 3 and 4: Revised Final Report of Results, PG&E Topock Compressor Station, Needles, California	Nov-09	4 KB
Approval Letters and Communications	Publication Date	File Size
DOI Letter Regarding: Acceptance of Work Plan for Time-Critical Removal Action at AOC 4, PG&E Topock Compressor Station, Needles, California	Dec-09	72 KB

DTSC Approval of Final Groundwater Corrective Measure Study/Feasibility Study Report for SWMU 1/AOC 1 AND AOC 10, PG&E, Topock Compressor Station, Needles, California (EPA ID NO. CAT080011729)	Dec-09	152 KB
Final Groundwater Corrective Measures Study/Feasibility Study Report for SWMU 1/AOC 1 and AOC 10, PG&E Topock Compressor Station, Needles, California	Dec-09	74 KB
DTSC Letter Request: Historic Burn Activities and Disposal Practices, PG&E Topock Compressor Station, Needles, California	Dec-09	470 KB
DTSC Letter: Acceptance of Final Groundwater Risk Assessment Report, PG&E Topock Compressor Station, Needles, California	Dec-09	61 KB
DTSC Acceptance of Groundwater Background Study Step 3 and 4: Revised Final Report of Results for PG&E, Topock Compressor Station, Needles, California (EPA ID NO. CAT080011729)	Nov-09	120 KB
DTSC Letter: Clarification of Specific California Applicable or Relevant and Appropriate Requirements, PG&E Topock Compressor Station, Needles, California	Oct-09	1.4 MB
DTSC Part B Soil Investigation at the PG&E Topock Compressor Station, Needles, California (EPA ID NO. CAT080011729)	Oct-09	1.4 MB
DTSC Letter: Conditional Approval of Modifications to the Compliance Monitoring Program, PG&E Topock Compressor Station, Needles, California	Sep-09	95 KB
RCRA Facility Investigation/Remedial Investigation Soil Investigation - Part B, PG&E Topock Compressor Station, Needles, California	Aug-09	121 KB
PG&E Proposal to Defer the Part B Soil Investigation at the Topock Compressor Station, Needles, California (EPA ID No. CAT080011729)	Jul-09	142 KB
DOI Action Memorandum: Request for Time-Critical Removal Action Number 4 at AOC 4 Debris Ravine, Pacific Gas and Electric Topock Compressor Station	May-09	443 KB
Conditional Approval of RFI/RI Volume 2 Addendum	May-09	32 KB
Approval of Proposal for Consolidating Reporting for the Topock Interim Measures Performance Monitoring Program with Site-wide Groundwater Monitoring Program, PG&E Topock Compressor Station, Needles, California	May-09	26 KB
Direction to Sample Select Groundwater Wells for Contaminants Recently Detected in Soil Samples and Request to Document Burn Activities within the Area of Concern 4 (AOC-4) Debris Ravine Area, PG&E Topock Compressor Station, Needles, California	May-09	119 KB
PG&E: Concurrence on Redline Soils Background Tech Memo, PG&E Topock Compressor Station, Needles, California	May-09	42 KB
Approval Letter for the Revised Final RCRA Facility Investigation/Remedial Investigation (RFI/RI), PG&E Topock Compressor Station, Needles, California - Hydrogeologic Characterization and Results of Groundwater and Surface Water Investigation	Feb-09	44 KB
Additional Direction on Preparation of the Corrective Measure Study/Feasibility Study at PG&E, Topock Compressor Station, Needles, California (EPA ID NO. CA080011729)	Dec-08	342 KB

Clarification of Direction on Preparation of the Corrective Measure Study/Feasibility Study at PG&E Topock Compressor Station, Needles, California	Nov-08	315 KB
Change in River Monitoring Program to Include Collection and Analysis of Unfiltered Surface Water Samples at PG&E, Topock Compressor Station, Needles, California (EPA ID NO. CAT080011729)	Oct-08	39 KB
Conditional Concurrence on August 29, 2008 Final Soil and Sediment DUA Usability Assessment Technical Memorandum for PG&E Topock Compressor Station, Needles, California	Oct-08	42 KB
Concurrence to Proceed with Groundwater Risk Assessment at PG&E, Topock Compressor Station, Needles, California (EPA ID NO. CAT080011729)	Oct-08	36 KB
PG&E Topock Compressor Station Remediation Site - Final Soil and Sediment Data Usability Assessment Technical Memorandum	Oct-08	54 KB
Revision of Monitoring and Reporting Program (MRP), Board Order No. R7-2006-0060, PG&E Topock Compressor Station, Needles, California	Aug-08	443 KB
Approved Modifications to the Topock IM Performance Monitoring Program, PG&E Topock Compressor Station, Needles, California	Aug-08	169 KB
Modification to Surface Water Monitoring Program at PG&E Topock Compressor Station, Needles, California	Jul-08	234 KB
Revised Work Plan for East Ravine Groundwater Investigation, PG&E Topock Compressor Station, Needles, California	Jul-08	49 KB
Conditional Approval of the Revised East Ravine Work Plan at PG&E Topock Compressor Station, Needles, California	Jul-08	34 KB
Modifications to Hydraulic Data Collection for the Interim Measures Performance Monitoring Program at the PG&E Topock Compressor Station, Needles, California	Jul-08	101 KB
Field Report: White Powder Occurrences in the East Ravine - Area of Concern (AOC) 10, PG&E Topock Compressor Station, Needles, California	Jun-08	6.6 MB
Analytical Method Change for Evaluation of Hexavalent Chromium at Pacific Gas and Electric Company (PG&E), Topock Compressor Station, Needles, California (EPA ID NO. CAT080011729)	Jan-08	38 KB
Comments on the Ecological Exposure Parameters, Bioaccumulation Factors, and Toxicity Reference Values Pacific Gas and Electric Company (PG&E) Topock Compressor Station Needles, California (EPA ID NO. CAT080011729)	Jan-08	1.8 MB
Comments on the East Ravine Groundwater Investigation Work Plan Pacific Gas and Electric Company (PG&E), Topock Compressor Station, Needles, California (EPA ID NO. CAT080011729)	Jan-08	248 KB
CERCLA Permit Exemption	Nov-07	541 KB
Expanded Metal Analysis at Existing Groundwater Monitoring Wells, PG&E Topock Compressor Station, Needles, California	Nov-07	1.0 MB
Workplan for Groundwater Investigation for Area 10 - east Ravine, PG&E Topock Compressor Station, Needles, California	Oct-07	40 KB
DTSC Conditional Approval Letter of Updates and Modifications to GW and Surface Water Monitoring Program	Sep-07	58 KB

DOI and Federal Agencies Approval of RFI-RI Volume 1 Revised August 2007	Sep-07	311 KB
DTSC Letter Providing Comments on PG&E Responses to Comments on Hydrogeology and Groundwater Sections of February 2005 Draft RFI/RI Report	Sep-07	228 KB
DTSC Letter Providing Comments on Corrective Measures/Feasibility Study Work Plan	Sep-07	1.9 MB
DTSC Letter Providing Comments on Soil and Sediment Data Usability Assessment Technical Memorandum	Aug-07	59 KB
Cover Letter to BLM/DTSC Re: Photos of Topock Compressor Station and Vicinity	Aug-07	232 KB
DTSC Acceptance Letter of Revised Final RFI/RI Vol 1	Aug-07	50 KB
DTSC Letter Providing Approval of the PGE-6 Well Decommissioning Report	Aug-07	49 KB
DTSC Letter Providing Comments and Conditional Approval of RFI/RI Soil Investigation Work Plan, Part A	Aug-07	2.5 MB
Letter to DTSC: Updates and Modifications to Performance Monitoring Program	Jul-07	84 KB
Letter to DTSC: Updates and Modifications to Groundwater Monitoring Program	Jul-07	395 KB
DTSC Letter Providing Comments on MW-20 Bench Batch Treatment Facility Decommissioning Work Plan	Jul-07	82 KB
Email sent July 4 summarizing PG&E-Agency communications regarding data for RFI-RI Volume 2 for Groundwater	Jul-07	463 KB
Well PGE-6 Decommissioning Summary	Jul-07	2.8 MB
2006 Annual Report - Archaeological and Historical Resources Management Activities for Topock (Applied EarthWorks)	Jul-07	44 KB
DTSC CMS Work Plan Comments	May-07	84 KB
DTSC RFI Volume 1 Response to Comments	May-07	204 KB
DTSC RFI Volume 1 Response to Comments Cover	May-07	38 KB
DTSC Approval of Work Plan for Anaerobic Core Samples	May-07	40 KB
DTSC Requirement for Phase II Chromium Isotope Study Workplan	Apr-07	122 KB
DTSC Conditional Approval of the In-situ Hexavalent Chromium Reduction Pilot test Work Plan ? Upland Plume Treatment	Apr-07	5.5 MB
DTSC Conditional Approval of Work Plan for Hydraulic Testing in Bedrock Wells	Apr-07	122 KB
DTSC Approve Well PGE-6 Revised Decomm Workplan	Mar-07	98 KB
DTSC Response to DOI/USGS Comments on Hydraulic Testing in Bedrock Wells WP Addendum	Mar-07	50 KB
DTSC Approve Addendum to CA Slant Drilling Workplan	Jan-07	41 KB
DTSC Approve Reduced GW Sampling Frequency	Jan-07	91 KB
Approval of Addendum 3 to the Floodplain In-situ Hexavalent Chromium Reduction Pilot Study Work Plan	Jan-07	42 KB
DTSC Acceptance of Performance Assessment Rpt for IM3 Injection Well Field	Jan-07	41 KB
DTSC Evaluation of Tech Memo: Information Review of GW Conditions in Bedrock Formation	Nov-06	392 KB
DTSC Evaluation of Work Plan for Additional GW Characterization Beneath the Colorado River by Slant Boring	Oct-06	81 KB

DTSC Approves Request for Modification of Shoreline Surface Water Sampling	Oct-06	520 KB
DTSC Project Organizational Chart	Oct-06	34 KB
DTSC Review of PGE-6 Decommissioning Work Plan and the Tech Memo: PGE-6 Decommissioning Evaluation	Oct-06	67 KB
Slant Boring Plume Investigation Work Plan Letter	Sep-06	32 KB
December 24, 2005 and April 23, 2006 Lubricating Oil Releases Topock Compressor Station - Investigation Results Letter Report	Sep-06	1.6 MB
Copy Rescinding of the Request for Approval to Implement Limited Sampling Frequency for Select Metals/General Minerals at IM-3 Injection Monitoring	Sep-06	188 KB
April 16, April 29, and May 2, 2006 Waste Water Releases at the Topock Compressor Station - Investigation Results Letter Report	Sep-06	2.3 MB
Copy Response to Comments Related to the Site History Portion of the RFI Report Dated February 2005	Jul-06	3.8 MB
Third and Fourth Quarter 2005 Groundwater Monitoring Reports, Compliance Monitoring Program for Interim Measures No. 3 Injection Well Field Area	Jun-06	226 KB
Technical Addendum No. 2: Approach for Hydraulic Testing of Wells at Locations 1, 2, and 4, Interim Measures Performance Monitoring	May-06	448 KB
Conditional Approval of Addendum No. 2 to the Floodplain In-Situ Hexavalent Chromium Reduction Pilot Test Work Plan	May-06	99 KB
Conditional Approval of Chromium Isotope Study Workplan	Mar-06	763 KB
Requirement for the preparation of a data quality Assessment Technical Memorandum	Mar-06	192 KB
Conditional approval of approach to drilling and well installation at locations 1 through 5, well installation workplan for interim measure performance monitoring	Feb-06	578 KB
Requirement for revised groundwater flow model report	Feb-06	149 KB
Conditional approval to commence start-up of extraction well PE-1 and continued extraction from well TW-3D	Jan-06	137 KB
Requirement for chromium isotope study, PG&E Topock Compressor Station Needles, CA	Jan-06	194 KB
Transmittal of resource conservation recovery act (RCRA) facility assessment questionnaire	Jan-06	86 KB
Conditional approval of the draft well installation work plan for interim measures performance monitoring program, dated 11/30/05	Jan-06	521 KB
Clarification regarding requirements for information to be included in progress	Jan-06	16 KB
Requirement for technical memorandum evaluating potential bedrock fracture porosity and preferential groundwater migration pathways	Jan-06	17 KB
IM No. 3 Land Use Area Memo	Jul-05	940 KB
BLM Action Memorandum - Removal Action No. 3 - September 17, 2004	Sep-04	911 KB
Closure Certification Letters - May - June 1995	May-95	258 KB