



Linda S. Adams  
Secretary for  
Environmental Protection



## Department of Toxic Substances Control

Maziar Movassaghi  
Acting Director  
5796 Corporate Avenue  
Cypress, California 90630



Arnold Schwarzenegger  
Governor

July 16, 2009

Enclosed is your copy of the California Department of Toxic Substances Control (DTSC), *July 2009 Public Participation Plan Addendum for Pacific Gas and Electric Company's Topock Compressor Station in Needles, California*. Please insert this *Addendum* in the back of the *February 2007, Public Participation Plan* between Appendix H and the back cover.

This *Addendum* updates the *February 2007 Public Participation Plan*. It summarizes results from DTSC's 2009 Community Survey which provided feedback on whether the public felt they had an adequate opportunity to be involved in the environmental investigation and cleanup of the Pacific Gas and Electric Company's Topock Compressor Station. The *February 2007 Public Participation Plan* is also available online at [www.DTSC-Topock.com](http://www.DTSC-Topock.com) and in the Information Repositories listed below.

If you have any questions or would like to request additional copies, please contact Christina Fu, DTSC Public Participation Specialist by phone: 714.484.5488 or Toll-Free 866.495.5651, or email: [CFu@dtsc.ca.gov](mailto:CFu@dtsc.ca.gov).

Library/Location	Contact Name/Number	Hours
<b>Department of Toxic Substances Control Library</b> 5796 Corporate Avenue Cypress, CA 90630	Julie Johnson 714.484.5337	Monday – Thursday: 9am – noon, 1pm – 4pm
<b>Needles Branch Library</b> 1111 Bailey Ave. Needles, CA 92363	Kirsten Mouton 760.326.9255	Monday – Tuesday: 10am – 6pm Wednesday: 10am – 4pm Thursday – Saturday: 10am – 5pm
<b>Chemehuevi Indian Reservation</b> Environmental Protection Office 2000 Chemehuevi Trail Havas Lake, CA 92363	Gilbert Parra 760.858.1140	Monday – Friday: 8am – 4pm
<b>Golden Shores/Topock Station Library</b> 13136 Golden Shores Parkway Topock, AZ 86436	Kim Stoddard 928.768.2235	Tuesday and Thursday: 8am – 2pm Wednesday: 3pm – 6pm
<b>Lake Havasu City Library</b> 1770 McCulloch Boulevard Lake Havasu City, AZ 86403	Audrey LaCommare 928.453.0718	Monday and Wednesday: 9am – 6pm Tuesday and Thursday: 9am – 8pm Friday and Saturday: 9am – 5pm
<b>Colorado River Indian Tribes Library</b> 2nd Avenue and Mohave Road Parker, AZ 85344	Elvira Holghee 928.669.1332	Monday – Friday: 8am – noon, 1pm – 5pm
<b>Parker Public Library</b> 1001 Navajo Avenue Parker, AZ 85344	Jeannie Smith 928.669.2622	Monday – Friday: 9am – 7pm Saturday: 9am – 2pm



# **Public Participation Plan Addendum**

## **Pacific Gas and Electric Company's Topock Compressor Station Needles, California**

**Prepared for  
California Department of Toxic Substances Control**

**5796 Corporate Avenue  
Cypress, California 90630**

**July 2009**

**Prepared by  
CH2MHILL**

---

# **Public Participation Plan Addendum Pacific Gas and Electric Company's Topock Compressor Station Needles, California**

Prepared for  
**California Department of Toxic Substances  
Control**

**5976 Corporate Avenue  
Cypress, California 90630**

July 2009

**CH2MHILL**  
155 Grand Avenue, Suite 1000  
Oakland, CA 94612

Approved by:

*Mona Arteaga Bontty*  
Mona Arteaga Bontty  
Public Participation Supervisor  
California Department of Toxic Substances Control  
5796 Corporate Avenue  
Cypress, CA 90630  
Date: July 10, 2009

Prepared by:  
CH2M HILL  
155 Grand Avenue, Suite 1000  
Oakland, CA 94612

Prepared for:  
California Department of Toxic Substances Control  
5796 Corporate Avenue  
Cypress, CA 90630

On behalf of:  
Pacific Gas and Electric Company  
77 Beale Street  
San Francisco, CA 94177

*\* The signatory has determined that this document contains the required elements for a Public Participation Plan Addendum. CH2M HILL assisted DTSC in preparation of this plan in accordance with the requirements of the Corrective Action Consent Agreement (revised): Pacific Gas and Electric Company's Topock Compressor Station, Needles, California, EPA ID No. CAT080011729, February 26, 1996; Health and Safety Code Sections 25187 and 25200.10; and DTSC's 2001 Public Participation Policy and Procedures Manual.*



This document is printed on recycled paper.

# 2009 Community Assessment

Words in **bold** are defined in the Glossary of Terms.

**Department of Toxic Substances Control (DTSC)** has distributed three community assessments to the stakeholders associated with the environmental investigations and cleanup plan for the Pacific Gas and Electric Company (PG&E) Topock Compressor Station (Site). The first Community Assessment, in 1997, consisted of a distribution of survey questionnaires and follow-up community interviews. In 2002, the Community Assessment also included a distribution of survey questionnaires and follow-up community interviews. Findings from these two surveys and questionnaires showed that the stakeholders were generally concerned with communication and health issues associated with the cleanup project.

In response to stakeholder concerns and requests, DTSC implemented the following outreach efforts:

- Produced and distributed fact sheets on project updates:
  - Six fact sheets were distributed prior to the 2007 **Public Participation Plan**.
  - Four additional fact sheets were distributed since then, including the most recent fact sheet, *PG&E Topock **Groundwater Investigation and Community Survey Update***, distributed in July 2009. A copy of this current fact sheet can be found in Appendix A.
- Established and maintains six **information repositories** near the project site:
  - Needles Public Library
  - Chemehuevi Indian Reservation
  - Golden Shores/Topock Library Station
  - Lake Havasu City Library
  - Colorado River Indian Tribes Public Library
  - Parker Public Library
- Held public meetings and will host a series in the summer of 2009:
  - **Environmental Impact Report Public Scoping Meetings** - May/June 2008
  - Public Open House meetings are scheduled to be held in the following cities in July 2009:
    - Parker, Arizona
    - Golden Shores, Arizona
- Established a project website and maintains up-to-date project information:
  - [www.dtsc-Topock.com](http://www.dtsc-Topock.com) is updated regularly and includes a library of project documents.

In January 2009, DTSC distributed the third Community Assessment questionnaire to the project stakeholders. Questionnaires were mailed to over 2,243 residents, property owners, Native American tribes, news media, water/local/state/federal agencies, elected officials and organizations on the Topock mailing list. DTSC received responses from 161 of the recipients. A copy of the survey used in the assessment can be found in Appendix B.

As a result of stakeholder responses, DTSC learned that most respondents were aware of the environmental investigation (only 33 were not). The community expressed a moderate to high level of concern about the overall Site, with three respondents stating they had no concern about the Site. The main issues raised can be broken down into five categories:

- Communication
- Environmental and cultural resource impacts
- Health effects
- Cleanup process

## Communication

Several respondents were not aware of contamination at the Site and were concerned that proper project information was not being publicized. Respondents expressed the desire for more information to be made available regarding the Site and current cleanup activities. A few respondents requested that public information be more accessible to people with disabilities, such as those unable to read. DTSC will host a series of public meetings in July 2009 as previously indicated to keep the public up-to-date on project information.

While the public appreciated being on the mailing list, they requested that fact sheets be published on a monthly basis or more often than previously distributed. They also requested that the fact sheets be written in a more readable fashion and that they include specific groundwater monitoring results. DTSC will attempt to ensure simple and understandable language in all fact sheets with a glossary of terms to provide more clarification of the environmental investigations. Many respondents were not aware of the project website. Those who were aware of the website requested that the information be more readable, be updated more often and include an overall project schedule. Website project information has been and will continue to be updated quarterly.

Respondents also noted that public meetings should be better publicized, occur more often and be centrally located with adequate capacity. As mentioned previously, DTSC is hosting a series of public meetings during the summer of 2009. DTSC will inform the community about public meetings through updated factsheets

and public announcements published in local newspapers or posted on city and community websites.

## Environmental and Cultural Resource Impacts

The community asked to be informed of the levels of **hexavalent chromium** released to the environment and what happens to chromium over time. Some asked about potential impacts to wildlife habitat, whether groundwater impacts had been measured, and results of additional groundwater sampling performed. Others raised questions regarding analytical findings, such as how hexavalent chromium breaks down into trivalent chromium. A couple of respondents expressed concern that the “Mystic Maze” has been desecrated.

## Health Effects

Some asked about potential impacts to human health, whether groundwater impacts had been measured, and for results of additional groundwater sampling performed. The community expressed concerns about the long term effects hexavalent chromium might have on the body, and increased potential to develop cancer and migraines. Additionally the public was concerned about contamination affecting downstream sensitive receptors, food grown in soil near the Site, fish consumption and recreational activities on and adjacent to the Colorado River. A couple of respondents requested that the monitoring reports be sent to the surrounding communities. In response to public concerns, DTSC toxicologists will be present at the Open House meetings to provide answers to public concerns on health-risk issues.

## Cleanup Process

The public expressed concerns that the cleanup process was unclear and taking too long. They were interested in seeing detailed and easily accessible cleanup process schedules. Some respondents were interested in the total cost to clean up the contamination. A few respondents were concerned that too much money is being spent to monitor, research and clean up the groundwater and soil contamination.

## **Appendix A**

### **Fact Sheets**

---



## Fact Sheets

---

### February 2008

PG&E issued an informational work notice to inform local residents and users of the river (e.g., boaters), as well as other stakeholders, that PG&E would be conducting drilling activities at four locations on the Arizona shoreline just north and south of the I-40 during March, April, May and June 2008. The notice described the type of drilling as both regular and, “slant drilling,” a method that allows for installation of groundwater monitoring wells 100 feet below the bottom of the Colorado River without any work being conducted in the river itself. The notice was mailed to Golden Shores and Topock, Arizona, residents, as well as to the ten interested Indian Tribes, elected officials, and other key organizations who take an interest in the project. Additionally, the notice was e-mailed to the Consultative Workgroup and Tribal representatives.

### May 2008

DTSC issued a fact sheet to announce the availability of a Notice of Preparation, which was available for public review and comment. The purpose of the Notice of Preparation was to solicit guidance from agencies and stakeholders for the scope and content of the environmental information to be included in the Topock Environmental Impact Report. The notice was mailed to Golden Shores and Topock, Arizona, residents, as well as to the ten interested Indian Tribes, elected officials, and other key organizations who take an interest in the project. Additionally, the notice was e-mailed to the Consultative Workgroup and Tribal representatives.

### July 2009

DTSC issued a fact sheet to announce upcoming community meetings, update the public on the status of the Topock groundwater investigation and briefly summarize the results of the community survey. The fact sheet was mailed to Golden Shores and Topock, Arizona, residents, as well as to the ten interested Indian Tribes, elected officials, and other key organizations who take an interest in the project. Additionally, the fact sheet was e-mailed to the Consultative Workgroup and Tribal representatives.



# WORK NOTICE

## Topock Groundwater Study – Upcoming Well Drilling

February 2008

Pacific Gas and Electric Company (PG&E) is performing an environmental investigation of the groundwater near Topock, Arizona under the oversight of the Arizona Department of Environmental Quality (ADEQ) Voluntary Remediation Program (VRP). PG&E will install monitoring wells near and beneath the Colorado River to collect groundwater samples and sediments. This work is part of an ongoing investigation being conducted near PG&E's Topock Compressor Station, located one-half mile southwest of Topock, Arizona, on the California side of the Colorado River.

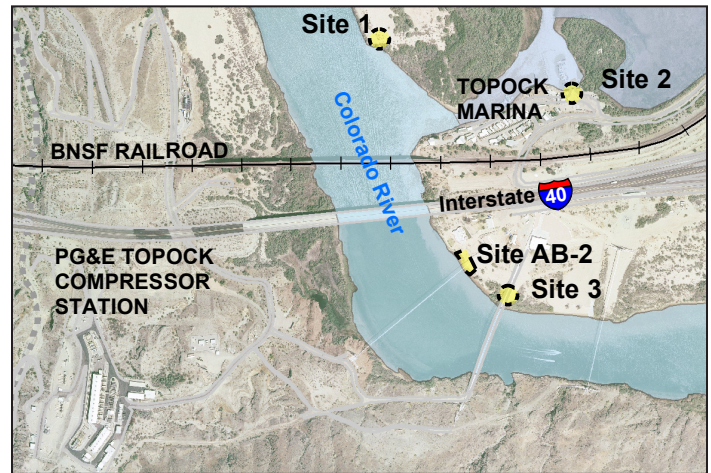
### Monitoring Well Installation Locations

Groundwater monitoring wells will be installed at up to four locations in the Topock, Arizona area. Well installation will require the use of a drill rig and supporting equipment. Each well will include multiple well "screens," or sampling points, at different depths, nested together inside one well casing.

**Site 1** - A pair of groundwater monitoring wells will be installed on the eastern shore of the Colorado River, on the Havasu National Wildlife Refuge (HNWR) peninsula north of I-40 and the Topock Marina. The installation of these wells is being conducted under the direction of the United States Department of the Interior (DOI). To minimize disturbance to habitat and wildlife, the wells will be installed along the levee road, and vehicle access to the site will follow existing roads. Pre- and post-construction surveys will be conducted by a biologist to determine that no endangered or threatened species are on site. Additional precautions, as directed by HNWR and DOI, will be taken to limit any disturbance to habitat and species.



Drill rig and support vehicle



Map of Well Installation Locations

**Site 2** - One monitoring well will be installed at the Topock Marina, just north of I-40 on the Arizona shoreline. The well will be installed in the Marina's lower parking lot, approximately 15 feet west of the public boat ramp. Precautions will be taken to secure the drill site, and barriers will be put in place to protect the public.

**Site AB-2** - This investigation will also include installation of a monitoring well that will allow for sampling of the groundwater 100 - 150 feet beneath the Colorado River. At Site AB-2, on the Topock shoreline just south of I-40, a "slant" well will be installed using an angled drilling method. Drilling from land at an angle allows the investigation of areas deep below the Colorado River without conducting any work in the river itself.

**Site 3** - If further characterization is required, an additional groundwater monitoring well (or pair of wells) may be installed on the southern edge of the Topock peninsula, just west of the El Paso Natural Gas and PG&E pipeline arch bridge. The installation of these wells may be vertical or "slant" and will depend on the findings from the newly installed wells at Sites 1, 2 and AB-2.

At each site, samples of groundwater and sediments will be collected for chemical analysis as the boreholes are being drilled. Once the wells are completed, groundwater will be collected from them on a regular basis and analyzed for chromium and other constituents.

### Impacts Will Be Minimized

We thank you for your patience and understanding during this important part of the investigation and apologize for any inconvenience caused by these



activities. During the well installation, you may notice an increase in activity and noise near the drilling sites. We are working to minimize any such disturbances. Special care will be taken to protect wildlife, their habitats, and cultural resources during all phases of this work. Every effort will be made to minimize the impact to surrounding businesses.

### Why This Investigation?

PG&E is working to remediate (clean up) hexavalent chromium contamination in groundwater on the California side of the Colorado River, adjacent to the PG&E Topock Compressor Station. The cleanup effort has included extensive and ongoing monitoring of the groundwater on the California floodplain. This investigation of Arizona groundwater will provide additional information concerning groundwater and geology in the Topock area.

### Schedule

Well drilling, installation and initial sampling are currently scheduled\* to begin in March and run through June 2008 as follows:

Location	Dates
<b>Site 1</b> (North of I-40 on HNWR levee)	March 10 - April 3
<b>Site 2</b> (Topock Marina Parking Lot)	April 8 - 12
<b>Site AB-2</b> (South of I-40)	April 13 - May 1
<b>Site 3 (if needed)</b> (South of I-40)	June 2008

*\* Schedule subject to change depending on field conditions and other factors*



### For More Information

If you would like to be added to ADEQ's mailing list for future mailings, please contact Joey Pace, as listed below. If you have any questions or concerns regarding this project, please contact ADEQ or PG&E personnel.

Yvonne Meeks, PG&E Topock Program Manager  
 ☎ Phone: 805-234-2257  
 ✉ Email: yjm1@pge.com

Kasia Grisso, Public Outreach Specialist for PG&E  
 ☎ Phone: 510-587-7626  
 ✉ Email: kasia.grisso@ch2m.com

Jennifer Barr, ADEQ VRP Manager  
 ☎ Phone: 602-771-4809  
 ✉ Email: barr.jennifer@azdeq.gov

Joey Pace, ADEQ Project Manager  
 ☎ Phone: 602-771-4574  
 ✉ Email: pace.joey@azdeq.gov

Hearing impaired persons may call ADEQ's TDD line at 602-771-4829.

Additional information can be found on ADEQ's website at  
<http://www.azdeq.gov/function/about/chromium.html>

ES052007001SFO\_V2 02-22-08

Yvonne Meeks  
 c/o Kasia Grisso  
 CH2M HILL  
 155 Grand Avenue, Suite 1000  
 Oakland, CA 94612





Department of  
Toxic Substances  
Control

*The Mission of  
the Department  
of Toxic  
Substances  
Control is to  
provide the  
highest level of  
safety, and to  
protect public  
health and the  
environment  
from toxic harm.*



State of California



California  
Environmental  
Protection Agency

## FACT SHEET – May 2008

# PG&E Topock Compressor Station Project Availability of a Notice of Preparation

The *Notice of Preparation* (NOP) is currently available for review and comment. The purpose of the NOP is to solicit guidance from agencies and stakeholders for the scope and content of the environmental information to be included in the *Environmental Impact Report* (EIR). The Department of Toxic Substances Control (DTSC) is the *lead regulatory agency* for the cleanup of the PG&E Topock Compressor Station (referred to as the “Station”). Under the *California Environmental Quality Act* (CEQA), DTSC must evaluate the environmental impacts of a project as part of the approval process. In order to select the most appropriate final cleanup remedy, DTSC will prepare an EIR to document the potential environmental impacts of the action. (*Words in bold and italics appear in the Glossary of Terms.*)



Project Location

## Public Scoping Meetings

**Public Comment Period for the NOP runs from May 2 to July 1, 2008.**

For information on accessibility and to request reasonable accommodations, please contact Susan Callery at (818) 717-6567 at least one week before the meeting.

- City of Palm Desert, City Council Chamber, Palm Desert, CA 92260  
Tuesday, May 27, 1:30-4:30
- Gila Ridge High School Auditorium, 7150 E. 24th Street, Yuma, AZ 85365  
Wednesday, May 28, 1:30-4:30 p.m.
- Needles Elks Lodge, 1000 Lillyhill Dr., Needles, CA 92363  
Thursday, May 29, 5:30-8:30 p.m.
- City Council Chamber, 2360 McCulloch Blvd. North, Lake Havasu City, AZ  
Monday, June 2, 2:00-5:00 p.m.
- Big River Development Enterprises, 150313 Rio Vista Dr., Big River, CA 92242  
Thursday, June 5, 5:00-7:00p.m.

## Project Background

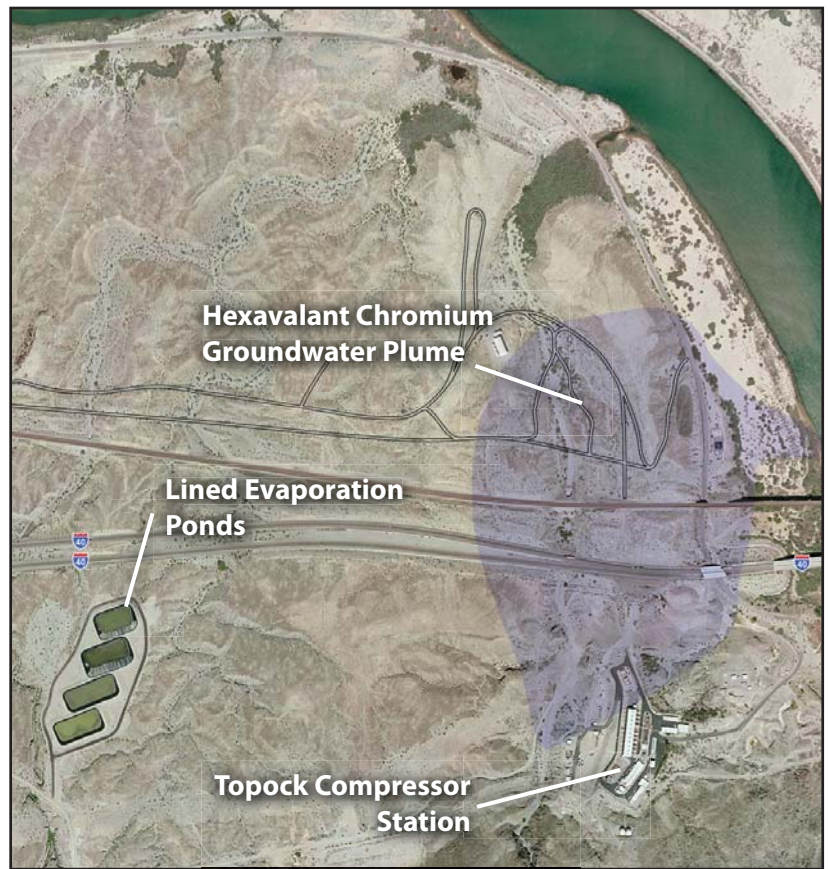
The Station is one-half mile west of the Colorado River and south of Interstate 40 (I-40). The Station is surrounded by federal lands including the Havasu National Wildlife Refuge managed by the United States Fish and Wildlife Service (USFWS) and lands managed by the Bureau of Land Management (BLM). The area has cultural and spiritual significance to Native American people and it is part of their traditional lands.

Pacific Gas & Electric Company (PG&E) owns the Station which began operating in 1951. The Station compresses natural gas for transportation through pipelines to PG&E's service territory in central and northern California. From 1951 to 1985, PG&E added chromium to the water in the cooling towers at their facility to prevent corrosion of the cooling tower equipment. During the 1950s and 1960s, untreated wastewater from the cooling towers containing **hexavalent chromium** was released into a streambed adjacent to the site. This streambed is known as the Bat Cave Wash. In 1973, PG&E began treating the wastewater and storing the treated wastewater in evaporation ponds. In 1985, PG&E stopped using chromium and switched to a more environmentally safe additive to control corrosion at the Station. Investigation of the Station began in the 1980s to assess whether the property had been environmentally affected by the waste disposal activities. These investigation activities revealed contamination in soil and **groundwater**.

## Cleanup Program

The first phase in the cleanup process was to assess the extent of the contamination. A formal investigation of soil and groundwater at the Station began in 1987. The investigation activities included the evaluation of soil and groundwater at the Station, and determined the movement of contaminants in groundwater and the threat to the Colorado River. These activities have included:

- collecting samples from groundwater monitoring wells at and around the Station
- collecting samples of sediment from the bottom of the Colorado River
- collecting water samples from the Colorado River



*Topock Compressor Station and Plume*

The investigations show that the affected groundwater, referred to as the “**plume**,” extends northeast from the Station toward the Colorado River, but did not detect any contaminants within the river water. Sampling activities continue on a regular basis and **pilot studies** are being performed to determine the most effective cleanup alternatives for the groundwater beneath the Station.

Under the jurisdiction of DTSC, PG&E also installed and operates a groundwater extraction and treatment system to control the directional flow of groundwater away from the river and to protect the water in the Colorado River.

## The California Environmental Quality Act

CEQA is a state law that requires the lead agency of a project to consider and disclose the environmental effects of its proposed actions before approving them. DTSC has been designated the lead agency for the environmental investigation and cleanup project at the Station. DTSC will prepare an EIR to assess the potential environmental effects of the cleanup alternatives prior to the selection of the final remedy. The final remedy may consist of one or more

technologies to clean up the soil and groundwater contamination.

DTSC and PG&E entered into a Memorandum of Understanding (MOU) for the preparation of the EIR by an independent consultant, EDAW, Inc. (EDAW); however, DTSC retains full control of the content and conclusions in the EIR.

The first step in the EIR process is to prepare an NOP. The subsequent steps required to complete the EIR include the following:

- Hold scoping meetings to obtain input from other agencies with jurisdiction in the project area or over project activities and community members on the scope and content to be evaluated in the EIR
- Prepare a Draft EIR that assesses the potential environmental impacts from the proposed remedies. The Draft EIR will describe existing conditions in the project area, analyze the project's potential effects, and identify measures to avoid, reduce, or mitigate adverse impacts from the cleanup program.
- Distribute the Draft EIR for a 60-day public review period and obtain comments from agencies and the public on the content of the Draft EIR.
- Prepare written responses to comments received during the public comment period.
- Prepare and publish the Final EIR
- Certify the EIR and file the *Notice of Determination* (NOD).

### Upcoming Scoping Meetings

A *scoping* meeting is a formal recorded hearing where agencies and community members can present their input on the scope of the EIR for this project. Scoping meetings will be held at times and locations listed on the front page.

Written comments can also be sent to Ms. Jeanne Matsumoto of DTSC for consideration in the EIR scoping process. All comments must be received by DTSC no later than July 1, 2008. Scoping meeting locations and dates also are provided in the NOP.

### Additional Information Sources

DTSC will continue to keep you informed during the EIR process. A notice will be sent to everyone who has

requested notification when the Draft EIR becomes available for review and comment. DTSC anticipates a draft EIR will be available for review during the second quarter of 2010. For general project information, the Topock website is an easy way to access information about the PG&E Topock Compressor Station environmental investigation and cleanup project. You can find the website at: [www.dtsc-topock.com](http://www.dtsc-topock.com). Project information can also be found at DTSC's main website: [www.dtsc.ca.gov](http://www.dtsc.ca.gov). These websites contain all of the Public Notices and Fact Sheets that have been prepared on the environmental activities at the Station since 1998 and provide a useful overview of the project.

### Who to Contact for Information

For more information on this project, please contact the following DTSC representatives:

**Mr. Aaron Yue**  
**DTSC Project Manager**  
5796 Corporate Avenue  
Cypress, CA 90630  
(714) 484-5439  
[ayue@dtsc.ca.gov](mailto:ayue@dtsc.ca.gov)

**Ms. Jeanne Matsumoto**  
**DTSC Public Participation Specialist**  
5796 Corporate Avenue  
Cypress, CA 90630  
(714) 484-5338  
Toll Free: (866) 495-5651  
[JMatsumo@dtsc.ca.gov](mailto:JMatsumo@dtsc.ca.gov)

For media inquiries, please call:

**Ms. Jeanne Garcia**  
**DTSC Public Information Officer**  
(818) 717-6573  
Email: [JGarcia1@dtsc.ca.gov](mailto:JGarcia1@dtsc.ca.gov)

TDD: Call 1-888-877-5378, and ask to contact Jeanne Matsumoto at 714-484-5338



**Department of  
Toxic Substances  
Control**



## The Topock Environmental Investigation and Cleanup EIR: A Step by Step Process

SPRING/SUMMER 2008	WINTER 2009/ SPRING 2010	SPRING 2010	SPRING/SUMMER 2010	SUMMER 2010
Notice of Preparation Distribution and Scoping Meetings	Draft EIR Prepared	Public Review of Draft EIR and Receipt of Comments	Preparation of Responses to Comments and Final EIR	Final EIR Certified and Notice of Determination Filed
■	■	■	■	
◆	◆	◆		
✱	✱		✱	✱

Legend	
■	Fact Sheet
◆	Public Meeting
✱	Information Repository

## Glossary of Terms

### ***California Environmental Quality Act (CEQA):***

Enacted in 1970 to provide long-term environmental protection, this law requires that governmental decision-makers and public agencies study the environmental effects of proposed activities, and that significant adverse effects be avoided or reduced where feasible.

***Environmental Impact Report (EIR):*** A report designed to examine the potential environmental impacts of proposed activities.

***Groundwater:*** Water beneath the earth's surface that flows through soil and rock openings.

***Hexavalent Chromium:*** A form of chromium, a metal naturally found in rocks, soil and the tissue of plants and animals. Also used in industrial products and processes.

***Lead Regulatory Agency:*** The public agency responsible for decision making on a project.

***Notice of Determination (NOD):*** Formal notice filed with the California State Clearinghouse after the Final EIR has been certified and a project approved.

***Notice of Preparation (NOP):*** A notice that is sent by the lead agency to notify agencies and the public that an EIR is being prepared and to request input on the content of the EIR.

***Pilot Study:*** A mini version of a full-scale study used to assess the feasibility of a particular cleanup technology in a specific location.

***Plume:*** A body of contaminated groundwater. The movement of a plume in groundwater can be influenced by such factors as local groundwater flow patterns, the character of the aquifer in which the groundwater is contained, and the density of contaminants.

***Scoping:*** A process to gain input from agencies and the public regarding the content of the EIR.

## Information Repository Locations

Project Reports, fact sheets, and other project documents can be found in the Information Repositories listed below:

On the World-Wide Web at:  
www.dtsc-topock.com

### Needles Public Library

1111 Bailey Avenue  
Needles, CA 92363  
Kristin Mouton: 760-326-9255

### Chemehuevi Indian Reservation

2000 Chemehuevi Trail  
Havasus Lake, CA 92363  
Gilbert Para: 760-858-1140

### Golden Shores/Topock Library Station

13136 Golden Shores Parkway  
Topock, AZ 86436  
Avis McKinnon: 928-768-2235

### Lake Havasu City Library

1770 McCulloch Blvd.  
Lake Havasu City, AZ 86403  
Audrey LaComarre: 928-453-0718

### Colorado River Indian Tribes Public Library

2nd Avenue and Mojave Road  
Parker, AZ 85344  
Amelia Flores: 928-669-1285

### Parker Public Library

1001 Navajo Avenue  
Parker, AZ 85344  
Jana Ponce: 928-669-2622

### Department of Toxic Substances Control

5796 Corporate Avenue  
Cypress, CA 90630  
Julie Johnson: 714-484-5337  
9am-Noon, 1pm-4pm, Monday –Friday  
Please call for an appointment



## Comment and Mailing List Form for PG&E's Topock Compressor Station

If you have any comments concerning the Notice of Preparation, please fill out the information below and mail in by **July 1, 2008**.

Comments (attach additional pages as needed)

---

---

---

---

If you would like to be added to or taken off the distribution list for mail related to the site, please fill out this form and return to DTSC.

☐

REMOVE me from the mailing list

☐

ADD me to the mailing list

Name: \_\_\_\_\_

Address: \_\_\_\_\_

City/State/Zip: \_\_\_\_\_

Phone/Email: \_\_\_\_\_

Please address all mailings to Aaron Yue, Project Manager, Department of Toxic Substances Control, 5796 Corporate Avenue, Cypress, CA 90630, or by email to AYue@dtsc.ca.gov.

*Our mailing lists are only used for keeping you informed of our activities. We do not routinely release our mailing lists to outside parties. However, they are considered public records and, if requested, may be subject to release.*





Department of  
Toxic Substances  
Control

Preventing  
environmental  
damage from  
hazardous waste,  
and restoring  
contaminated  
sites for all  
Californians.



State of California



California  
Environmental  
Protection Agency

## Fact Sheet – July 2009

# Pacific Gas and Electric Company (PG&E) Topock Environmental Investigation Update

The Department of Toxic Substances Control (DTSC) has sent you this fact sheet to provide current information about the environmental investigation and cleanup activities for the PG&E Topock Compressor Station (referred to as the “Site”). The Site is located in San Bernardino County, 15 miles southeast of Needles, California and one-half-mile west of the Colorado River.

This fact sheet includes the following information:

- Summary of Environmental Site Investigations to date
- Summary of the 2009 Community Survey Results
- Next Steps

### Community Meetings

Community meetings will be held to further inform the community members about the clean up process and to provide a summary of environmental investigations at the Site. DTSC invites you to attend one of the following meeting times and locations:

Tuesday, July 28, 2009	Thursday, July 30, 2009
Parker Community/Senior Center Time: 4:30 p.m. – 7:30 p.m. 1115 12th St. Parker, Arizona 85344 928.669.9514	Golden Shores Civic Association Times: 11 a.m. – 2 p.m. & 4 p.m. – 7 p.m. 13136 S. Golden Shores Parkway Topock, Arizona 86436 928.768.2121

DTSC representatives will provide visual displays and will be available to answer your questions or concerns about the Site.

### Overview

As the **lead agency** overseeing environmental investigations at the Site, DTSC has directed PG&E, in accordance with California and federal laws, to investigate the nature and extent of **groundwater** and soil contamination resulting from operations of the compressor station. The investigation known as the **RCRA Facility Investigation/Remedial Investigation (RFI/RI)** is a key step in the Site cleanup process.

The RFI/RI is divided into three different volumes with general content as follows:

- Volume 1 – Site background and history (completed August 2007)
- Volume 2 and Addendum – Groundwater and surface water characterization associated with the Bat Cave Wash contamination (completed in June 2009)
- Volume 3 – Soil characterization and remaining areas of concern (anticipated completion in 2012)

RFI/RI results and the Site **risk assessment** will be used to develop and evaluate appropriate clean-up methods in a report called **Corrective Measures Study/ Feasibility Study (CMS/**

FS). Once the CMS/FS is complete, DTSC will propose a **final remedy** for the Site in a **Statement of Basis** document. Along with the Statement of Basis, DTSC will issue a Draft **Environmental Impact Report (EIR)**, which documents the potential environmental impacts of the clean-up project as proposed. There will be a 60-day public comment period and a public hearing before the proposed final remedy is approved. The RFI/RI Volumes 1 and 2 can be found at the Topock website: [www.dtsc-topock.com](http://www.dtsc-topock.com), or at the local repositories listed on the last page of this fact sheet.

### Summary of Investigation Findings

The RFI/RI Volume 1 Report, completed in August 2007, documents information about compressor station operations, past disposal practices, and **constituents of potential concern**. The report also identified 32 **areas of concern** that required further investigation. Three of the 32 areas were investigated and reported in Volume 2 as it relates to the groundwater contamination released into a natural desert dry wash called the “Bat Cave Wash.” The remaining areas are being investigated and will be reported in Volume 3.

Words in **bold** are defined in the Glossary of Terms.



The three areas of concern investigated as part of Volume 2 are:

- The former **percolation bed** in the Bat Cave Wash
- Area around former percolation bed
- Inactive injection well (PGE-08)

The figure to the right shows the three areas investigated. The focus of the investigation was to define the nature and extent of contamination in groundwater, **surface water**, **pore water** and **river sediment** from historic releases in the Bat Cave Wash area and the inactive injection well, PGE-08.

After finding groundwater contamination, PG&E installed over 100 monitoring wells, collected data for more than 10 years, and summarized the water quality data in the RFI/RI Volume 2 Report (completed in February 2009) and its addendum (completed in June 2009). As a result of the studies, the report identified the extent of the groundwater contamination associated with the historical releases in the three focused areas. The report also identified that constituents of potential concern for groundwater are

**hexavalent chromium, total chromium, molybdenum, selenium, and nitrate.** The figure to the left highlights the hexavalent chromium **plume** associated with past releases in the Bat Cave Wash area. The data did not suggest a current impact to the Colorado River surface water, pore water, or river sediment in the vicinity of the Site.

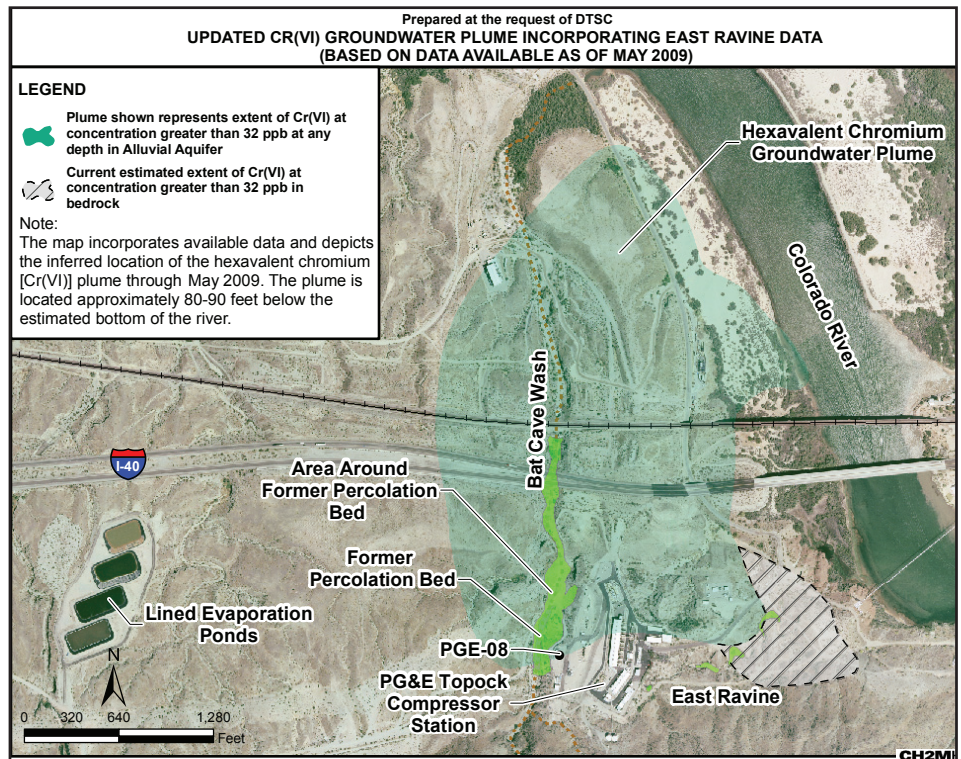
Investigation of soil contamination and other areas of concern are ongoing. As of May 2008, PG&E has installed new monitoring wells in eight locations. Findings from the East Ravine study area will be presented in upcoming reports, while the RFI/RI Volume 3 report will be completed in the first quarter of 2012.



*Pictured above is a flush mount groundwater monitoring well at the Site.*

## 2009 Topock Community Survey

DTSC distributed a community survey to the public in January 2009. The survey was designed to gather information about the community's level of awareness and interest in the Site and allow an opportunity for the community to express any specific concerns about the Site and the public involvement process. The survey results also provided useful community feedback regarding the needs and concerns of the Site's surrounding community.



*The current plume map above includes the East Ravine area. PG&E is preparing a report on the East Ravine. The report will be placed at the local information repositories when completed.*

DTSC received over 200 responses to the survey. In general, survey results showed that the community is most interested in the following:

- Receiving more information about the environmental impacts of the Site.
- Learning about potential effects of chromium on public health.
- Determining whether there are any chromium impacts to the Colorado River and the surrounding environment.
- Being informed about the timeline for Site cleanup.

## Next Steps

PG&E is currently preparing the CMS/FS to evaluate alternatives for the cleanup of the groundwater plume associated with past releases in the Bat Cave Wash area. The study is anticipated to be completed at the end of 2009. In addition, PG&E will complete a soil investigation of the remaining areas of concern and will summarize the data in the forthcoming RFI/RI Volume 3 Report, anticipated to be completed in 2012.

DTSC anticipates holding a public comment period on the proposed groundwater cleanup plan and associated draft EIR in Spring 2010. Public hearing dates will be held during the public comment period to allow an opportunity for community input on the final groundwater remedy selection.

2009  
Complete RFI/RI  
Volume 2 & Addendum

2009  
Complete CMS/FS

2009 – 2010  
Public Comment on  
Statement of Basis for final  
remedy

2012  
RFI/RI Volume 3: Soil



## Glossary of Terms

**Area of Concern:** Areas in and around a project site that either have shown high levels of contamination or may have been contaminated from past operations, making them focus areas of the site investigation.

**Community Survey:** A survey prepared by DTSC and distributed to the community surrounding a project site. The survey is a tool to gather information about the community's level of awareness and interest in a project site, understand specific concerns about a project site and to gather project specific public involvement questions or concerns.

**Constituents of Potential Concern:** Chemical elements or compounds (e.g. chromium) which may or may not be present at a project site.

**Corrective Measure Study/Feasibility Study (CMS/FS):** A study conducted by the facility owner/operator to identify and evaluate alternative cleanup options to address contamination at a project site.

**Department of Toxic Substances Control (DTSC):** A department within the California Environmental Protection Agency in charge of the regulation of hazardous waste from generation to final disposal, and for overseeing the investigation and cleanup of hazardous waste sites.

**Environmental Impact Report (EIR):** A report designed to examine the potential environmental impacts of proposed activities.

**Final Remedy:** The final cleanup action proposed for managing contaminants at a project site.

**Groundwater:** Water beneath the earth's surface that flows through soil and rock openings (aquifers) and often serves as a primary source of drinking water.

**Hexavalent Chromium:** A form of chromium. Chromium is a metal naturally found in rocks, soil and the tissue of plants and animals. Hexavalent chromium is used in industrial products and processes and is a known carcinogen when inhaled (i.e., through breathing).

**Lead Agency:** A public agency with the principal responsibility for ordering and overseeing site investigation and cleanup.

**Molybdenum:** A metallic element widely distributed in the Earth's crust that is used in industrial products and processes.

**Nitrate:** Nitrates and nitrites are nitrogen-oxygen chemical compounds which combine with various organic and inorganic compounds. Once taken into the body, nitrates are converted into nitrites.

**Percolation Bed:** An unlined bed with built-up sides constructed of soil that collects discharged wastewater and allows it to soak into the ground and/or evaporate.

**Plume:** A body of contaminated groundwater flowing from a specific source. The movement of the groundwater is influenced by such factors as local groundwater flow patterns, the character of the aquifer in which the groundwater is contained, and the density of contaminants.

**Pore Water:** Pore water is characterized as water located within pore spaces between the grains of sediment beneath

the bottom of the river.

**Resource Conservation and Recovery Act (RCRA):** A federal law that establishes a regulatory system to track and provide safe procedures for management of hazardous wastes from the time of generation to final disposal.

**RCRA Facility Investigation/Remedial Investigation (RFI/RI):** An investigation that occurs in the corrective action process following a RCRA Facility Assessment. It is an in-depth study designed to gather data needed to determine the nature and extent of contamination at site.

**Risk Assessment:** Qualitative and quantitative evaluation of the risk posed to human health and/or the environment by the actual or potential presence and/or use of specific pollutants.

**Sediment(s):** The soil, sand and minerals at the bottom of surface waters, such as streams, lakes and rivers. The term may also refer to solids that settle out of any liquid.

**Selenium:** A non-metallic element abundant in the Earth's crust that is used in industrial products and processes.

**Statement of Basis:** A document which describes the basis for DTSC's proposed remedy and cleanup standards.

**Surface Water:** All water naturally open to the atmosphere such as rivers, lakes, reservoirs, ponds, streams, impoundments, seas, estuaries, etc.

**Total Chromium:** The additive of concentrations from all forms of chromium, mainly comprising of hexavalent and trivalent forms. The California drinking water standard for total chromium is 50 micrograms per liter (or parts per billion), while the Federal standard is 100 micrograms per liter.

## DTSC Contacts

### Aaron Yue, DTSC Project Manager

5796 Corporate Avenue  
Cypress, CA 90630

📞 714.484.5439

✉️ AYue@dtsc.ca.gov

### Christina Fu, DTSC Public Participation Specialist

5796 Corporate Avenue  
Cypress, CA 90630

📞 714.484.5488

📞 **Toll Free:** 866.495.5651

✉️ CFu@dtsc.ca.gov

## For media inquiries contact:

### Jeanne Garcia, DTSC Public Information Officer

9211 Oakdale Avenue  
Chatsworth, CA 91311

📞 818.717.6573

✉️ JGarcia1@dtsc.ca.gov

## Notice to Hearing-Impaired Individuals

You can obtain additional information about the site by using the California State Relay Service at 1 (888) 877-5378 (TDD). Ask them to contact Christina Fu at 714.484.5488



## Information Repository Locations

Project reports, fact sheets, and other project documents can be found on the web at: [www.dtsc-topock.com](http://www.dtsc-topock.com), or in the Information Repositories listed below.

### Needles Public Library

1111 Bailey Avenue  
Needles, CA 92363  
Contact Kirsten Mouton: 760.326.9255  
Hours:  
10am – 6pm, Monday and Tuesday  
10am – 4pm, Wednesday  
10am – 5pm, Thursday through Saturday

### Chemehuevi Indian Reservation

2000 Chemehuevi Trail  
Havasus Lake, CA 92363  
Contact Gilbert Parra: 760.858.1140  
Hours: 8am – 4pm, Monday – Friday

### Golden Shores/Topock Library Station

13136 Golden Shores Parkway  
Topock, AZ 86436  
Contact Kim Stoddard: 928.768.2235  
Hours:  
8am – 2pm, Tuesday and Thursday  
3pm – 6pm, Wednesday

### Lake Havasu City Library

1770 North McCulloch Blvd.  
Lake Havasu City, AZ 86403  
Contact Audrey LaCommare: 928.453.0718  
Hours:  
9am – 6pm, Monday and Wednesday  
9am – 8pm, Tuesday and Thursday  
9am – 5pm, Friday and Saturday

### Colorado River Indian Tribes Public Library

2nd Avenue and Mojave Road  
Parker, AZ 85344  
Contact Elvira Holghee: 928.669.1285  
Hours:  
8am – noon, 1pm – 5pm  
Monday– Friday

### Parker Public Library

1001 Navajo Avenue  
Parker, AZ 85344  
Contact Jeannie Smith: 928.669.2622  
Hours:  
9am – 7pm, Monday– Friday  
9am – 2pm, Saturday

### DTSC

5796 Corporate Avenue  
Cypress, CA 90630  
Contact Julie Johnson: 714.484.5337  
Hours:  
9am – noon, 1pm – 4pm  
Monday – Thursday

CHRISTINA FU  
DTSC PUBLIC PARTICIPATION SPECIALIST  
5796 CORPORATE AVENUE  
CYPRESS, CA 90630  
Inside: Information about  
PG&E Topock Compressor Station

**Appendix B**  
**2009 Community Survey**

---



Linda S. Adams  
Secretary for  
Environmental Protection



## Department of Toxic Substances Control

---

Maureen F. Gorsen, Director  
5796 Corporate Avenue  
Cypress, California 90630



Arnold Schwarzenegger  
Governor

January 5, 2009

### Community Survey for PG&E Topock Compressor Station Site

Dear Community Member:

We encourage you to complete and return this community survey designed to evaluate your interest in an environmental investigation and cleanup for the PG&E Topock Compressor Station Site. Your responses to this survey will help us understand your concerns, plan future outreach activities, and keep you informed.

The Department of Toxic Substances Control, a department within the California Environmental Protection Agency, is responsible for overseeing the investigation and ensuring that mitigation and cleanup activities are conducted in accordance with state and federal laws and regulations.

Thank you for taking the time to fill out and return this community survey. **Please fill out and return the attached survey by January 26, 2009.** If you have any questions about the environmental investigation or the attached survey, please call Jeanne Matsumoto at (714) 484-5338, or e-mail me at [jmatsumo@dtsc.ca.gov](mailto:jmatsumo@dtsc.ca.gov).

Sincerely,

Jeanne Matsumoto  
Public Participation Specialist

Enclosed – Community Survey



# California Environmental Protection Agency Department of Toxic Substances Control

Pacific Gas & Electric Company (PG&E)  
Topock Compressor Station Site  
I-40 and Park Moabi Road, Needles, CA 93623



## Community Survey -- Help us improve!

This survey is intended to get your feedback on whether you feel you have had adequate opportunity to be involved in the environmental investigation and cleanup of the PG&E Topock Compressor Station site. Your comments will help us to improve our process and interactions with you and the community.

The Public Participation Program within the California Department of Toxic Substances Control (DTSC) is responsible for ensuring communities have an opportunity to actively participate in our decision-making process.

**Please return this survey by January 26, 2009** in the envelope provided to Jeanne Matsumoto, Public Participation Specialist, 5796 Corporate Ave. Cypress, CA 90630, or by email to [jmatsumo@dtsc.ca.gov](mailto:jmatsumo@dtsc.ca.gov), phone: 714-484-5338.

1) Are you aware that an environmental investigation and cleanup effort is taking place at the PG&E Topock Compressor Station site?

\_\_\_\_\_ YES \_\_\_\_\_ NO

2) How long have you lived or worked in the area?

\_\_\_\_\_ 0-5 years \_\_\_\_\_ 6-12 years \_\_\_\_\_ 13-20 years \_\_\_\_\_ 21 or more years

3) What is your current level of concern about or interest in the PG&E Topock Compressor Station site, if any?

\_\_\_\_\_ None \_\_\_\_\_ Low \_\_\_\_\_ Moderate \_\_\_\_\_ High

4) Do you have any specific concerns about the PG&E Topock Compressor Station site? If so, please describe:

---

---

---

---

5) Have you received fact sheets from DTSC about the PG&E Topock Compressor Station site?

\_\_\_\_\_ YES \_\_\_\_\_ NO

How Many? \_\_\_\_\_ 1-2 \_\_\_\_\_ 3-4 \_\_\_\_\_ 5 or more

IF YES, please rate your experience.	Strongly Disagree			Strongly Agree	
Was the fact sheet easy to understand?	1	2	3	4	5
Was the document well organized?	1	2	3	4	5
Did the document provide important information?	1	2	3	4	5
Were technical terms and procedures clearly explained?	1	2	3	4	5
Were Public Participation opportunities clearly explained?	1	2	3	4	5

6) Do you have internet access?

\_\_\_\_\_ YES \_\_\_\_\_ NO IF YES, what type? \_\_\_\_\_ Cable \_\_\_\_\_ DSL \_\_\_\_\_ Dial-up

7) Would you prefer to receive information via email?

\_\_\_\_\_ YES, Name \_\_\_\_\_ and Email address: \_\_\_\_\_ NO

8) Have you been to the DTSC Main Website [www.dtsc.ca.gov](http://www.dtsc.ca.gov)? \_\_\_\_\_ YES \_\_\_\_\_ NO

9) Or the PG&E Topock Compressor Station project website [www.dtsc-topock.com](http://www.dtsc-topock.com)? \_\_\_\_\_ YES \_\_\_\_\_ NO

If YES, please rate your experience below.		Strongly Disagree			Strongly Agree	
Was the website easy to navigate/find information?	DTSC Main Website	1	2	3	4	5
	Topock Project Website	1	2	3	4	5
Did website provide important information?	DTSC Main Website	1	2	3	4	5
	Topock Project Website	1	2	3	4	5
Was it easy to view or download project documents?	DTSC Main Website	1	2	3	4	5
	Topock Project Website	1	2	3	4	5
Would you visit it again to get Site info?	DTSC Main Website	1	2	3	4	5
	Topock Project Website	1	2	3	4	5

10) What other ways have you received information about the Topock Site?

\_\_\_\_\_ Newspapers \_\_\_\_\_ TV \_\_\_\_\_ Radio \_\_\_\_\_ Friends/Relatives \_\_\_\_\_ Employees/Former employees of the facility  
\_\_\_\_\_ Elected Officials \_\_\_\_\_ Other \_\_\_\_\_

11) If a public meeting about the project were held in your community, would you attend? \_\_\_\_\_ YES \_\_\_\_\_ NO

12) What days and times are best for a community meeting?

\_\_\_\_\_ Mon \_\_\_\_\_ Tue \_\_\_\_\_ Wed \_\_\_\_\_ Thurs \_\_\_\_\_ Fri \_\_\_\_\_ Sat \_\_\_\_\_ Sun  
\_\_\_\_\_ Daytime 8 am – 5 pm \_\_\_\_\_ Evenings 6 pm – 10 pm

13) What is the best site or location in your community for holding a community meeting?

\_\_\_\_\_  
\_\_\_\_\_

14) What languages are spoken in your community? \_\_\_\_\_

If you named a language besides English, do you feel that future communication to community members regarding this Site should be written in that language? \_\_\_\_\_ YES \_\_\_\_\_ NO

**Do you have any additional thoughts on how we can improve?**

\_\_\_\_\_  
\_\_\_\_\_

**Would you like to be added or removed from the mailing list?** \_\_\_\_\_ YES (fill in info below) \_\_\_\_\_ NO

**Please let us know how to contact you (optional)**

Name \_\_\_\_\_ E-mail \_\_\_\_\_  
Address \_\_\_\_\_ Phone \_\_\_\_\_  
City, State, ZIP \_\_\_\_\_

May we contact you in the future to interview about your opinion or for additional information regarding your responses to this survey? ☐ Yes ☐ No

**Thank you for your participation! We appreciate the time you have taken to complete this survey.**

If you have any questions or concerns regarding this site, please call us at (866) 495-5651, or Jeanne Matsumoto at 714-484-5338.



---

## PGE TOPOCK PROJECT

### 2009 DTSC Community Survey Results

---

*2243 community surveys were mailed to the surrounding community, interested parties and stakeholders on January 8, 2009. 161 completed surveys were completed and returned.*

**1. Are you aware that an environmental investigation and cleanup effort is taking place at the PG&E Topock Compressor Station?**

YES	NO
124	33

**2. How long have you lived or worked in the area?**

<b>0-5 years</b>	<b>6-12 years</b>	<b>13-20 years</b>	<b>21 or more years</b>
40	43	38	36

**3. What is your current level of concern about or interest in the PG&E Topock Compressor Station site, if any?**

<b>None</b>	<b>Low</b>	<b>Moderate</b>	<b>High</b>
11	23	53	68

**4. Do you have any specific concerns about the PG&E Topock Compressor Station site? If so, please describe:**

***Water supply/Well water and drinking water quality***

How does it affect our water supply?

Clean water

I'm concerned about the effects it could have on our well water.

Our drinking water and chromium in the soil which I have plants and work out in the yard almost daily. Over 200 plants & 30 trees.

Will this affect our drinking water? If so, what are the effects on our health? Will anyone tell us? I have concerns that we won't be told the truth.

Hex chrome migrating to my well

Does this affect our water supply? When is the expected date of completion?

I am a water well contractor so I have a real concern over how this may effect our ground water.

Clean it up.

Underground water supply and the River.

I am worried that my 2 houses and 5 lots will be worthless because of what you have done to our land and water.

Water contamination

Yes, we have wells down river from the compressor station

Water quality and any health risks

Contaminating the river or water table.

Has it leached into the water supply? Has it affected the fish in the river, if so are they edible?

How much Hexavalent Chromium is in the Golden Shores Arizona tap water from our underground aquifer?

How does it affect our water supply? Our drinking water.

Very interested in the migration of pollutants in to Colo River thus polluting the entire lake as well as all of the millions of people who rely on this water to sustain life!

Yes This site could affect Lake Havasu water in a negative way. This could affect millions of people in Arizona & California.

Pollution of water supply to Lake Havasu City.

Yes, that contamination Has reached the Colorado River and is polluting all settlements downriver from Topock.

Clean H<sub>2</sub>O is my biggest concern.

Is my well water safe to drink?

If they pollute the Colorado with chromium it could shut down CA and AZ water.

***River and Wildlife***

Chromium 6 reaching the river water

No dumping into Colorado River

Can Topock Marsh in anyway be affected?

---

## PGE TOPOCK PROJECT

### 2009 DTSC Community Survey Results

---

I love boating on the river and if it is polluted.....

Toxic substance poisoning the water for fish and wildlife

For me, especially the Topock area, has been a source of recreation and beauty for decades. I wouldn't want anything to jeopardize that and certainly wouldn't want it to be Hinckley revisited.

The toxins are deep - the river offers no protection.

The well water fish impacted with toxic substances swimming in the river long term effects

Contamination of Colorado River water

Is the Colorado River safe? Are the beaches near the site?

Water contamination in the Colorado River.

Just as long as they're not polluting our river.

#### ***Treatment/Mitigation/Plume***

Having been involved in industrial waste water treatment specifically reduction of Cr6 process for the Boeing Co. migration. I would also like info on the treatment

Also involved sampling for water table pollution for 15 years. I would like to see more specifics on plume

Do not understand much about how you expect to erratic the problem.

How are they processing the water pumped from the test wells and are they now releasing the treated water @ the site or are they still trucking it out?

As downstream users of Colorado River water, Lake Havasu City would like to be kept aware of the mitigation process.

Need to be kept up to date!

I hope that California Environmental is doing their job.

How thorough do you plan to be and who is the watchdog agency to oversee the cleanup?

That the cleanup efforts be continued until the site is clear and contamination of the river is no longer a problem.

I would like to know more about this program.

When and why and how does it get stopped.

Would like to see more work reports of the monitoring levels. But overall you're doing a great job.

#### ***Duration of cleanup/Time***

Taking too long to identify and initiate solution

When will you be done with this clean-up?

Water quality and estimated time for cleanup

How many estimated years for clean-up?

I am not able to think of any concerns at this time - except for the obvious concern regarding the contamination & timeline for clean-up.

How much longer will the cleanup take?

#### ***Expense***

Monitor station at the least monetary expense

Contamination of the Colorado water system. PG&E would not be spending \$\$\$\$ if there was not a problem.

That the testing is continued in and around area to make sure that it and the Colorado River aren't contaminated.

I think the so-called environmental dangers from this site are way over rated, and the clean-up expenditures are largely a waste of time and money.

Yes, this paper & return envelope is a waste of tax payers dollars and how much do you make? Waste! Waste!

#### ***Health issues/concerns***

Am concerned about the water. I've had migranes really bad since I moved here in 2005, and my doctors can not find the source of them.

I have great concern due to your past record. You usually get going after a few people die.

Why are there so many cases of cancer in this tiny town. Why are there so many different types of cancer here?

Our health

How does it effect our school site? We are a pre-K to 8th grade school

#### ***Chemicals of Concern***

What are you cleaning up? If toxic substances, what kind?

What PG&E is "cleaning up" is chromium 6, from what I have been told highly toxic,

# PGE TOPOCK PROJECT

## 2009 DTSC Community Survey Results

### **Cultural concerns**

The cleanup is too slow and the sacred site of the Mystic Maze has been desecrated.  
Cultural resources concerns. Especially Topock Maze.

### **Miscellaneous**

Does it affect Golden Shores? If so how?

Community meetings have not be publicized if they have been held or we have not been informed in time.

I did NOT know it was there - so now I am very concerned there is a clean up going on? & I did not even know it was there. That is very undercover - what is going

PG&E has a bad history in dealing with health hazards.

Site is actually below where I live. It does not directly effect me.

the environmental rangers who patrol 24/7 try to keep people away from the site on the California side. Is there one on the Topock side? If so, how could the river not be affected?

### **Not related to DTSC Topock project**

We don't understand our micro bursts (power outs) need to have something done to eliminate it.

At one time I worked for the Gas Co. I know for a fact that the Gas Co is one of the worst at environmental cleanup.

Periodic fumes - when traversing I-40 strong gas odor intermittent

Am more concerned about runoff from the mines above Oatman - soup looking stuff a foot thick

I don't believe anything you say. We lived in Cal most of our lives - we've seen it all before. I guess moving just across the border to Topock wasn't far enough.

### **5. Have you received fact sheets from DTSC about the PG&E Topock Compressor Station site?**

YES	NO
95	64

#### **How many?**

1-2	3-4	5 or more
29	30	17

IF YES, please rate your experience.	Strongly Disagree		Strongly Agree		
	1	2	3	4	5
Was the fact sheet easy to understand?	7	6	26	31	14
Was the document well organized?	5	10	21	28	14
Did the document provide important information?	6	9	20	31	20
Were technical terms and procedures clearly explained?	9	9	26	26	14
Were the Public Participation opportunities clearly explained?	8	9	24	29	12

### **6. Do you have internet access?**

YES	NO
98	55

### **7. Would you prefer to receive information via email? YES – 25**

**PGE TOPOCK PROJECT**  
**2009 DTSC Community Survey Results**

---

8. Have you been to the DTSC Main Website [www.dtsc.ca.gov](http://www.dtsc.ca.gov) ?

<b>YES</b>	<b>NO</b>
13	128

9. Or the PG&E Topock Compressor Station project website [www.dtsc-topock.com](http://www.dtsc-topock.com) ?

<b>YES</b>	<b>NO</b>
9	109

		Strongly Disagree			Strongly Agree	
IF YES, please rate your experience below.		1	2	3	4	5
Was the website easy to navigate/find information?	DTSC Main Website	1		5	4	2
	Topock Project Website	1		7	2	3
Did the website provide important information?	DTSC Main Website	1		5	5	1
	Topock Project Website	1		5	5	2
Was it easy to view or download project documents?	DTSC Main Website	1	1	3	6	1
	Topock Project Website	1	1	4	5	2
Would you visit it again to get site information?	DTSC Main Website	1	3	2	3	3
	Topock Project Website	1		7	2	3

---

**PGE TOPOCK PROJECT**  
**2009 DTSC Community Survey Results**

---

**10. What other ways have you received information about the Topock project?**

Newspapers	TV	Radio	Friends/Relatives	Employees/Former Employees	Elected Officials	Other
55	6	22	23	16, former concrete employee	6	Tribal affiliates

**11. If a public meeting about the project were held in your community, would you attend?**

YES	NO
67	16

**12. What days and times are best for a community meeting?**

Mon	Tue	Wed	Thurs	Fri	Sat	Sun
24	28	31	34	25	15	9

Daytime 8am-5pm	Evenings 6pm-10pm	Other
47	57	anytime any day

**13. What is the best site or location in your community for holding a meeting?**

Hooches  
Needles/Parker - 2  
County Building  
Community center -54  
Golden Shores Community Center - 18  
Needles City Council Chambers  
VFW - 3  
Lake Havasu City  
Parker  
Civic Center -11  
County Administration Building (Mohave County)  
Aquatic/Community Center or City Council Chambers/ P.D.  
Topock - 3  
Mohave Community College  
Topock Community Hall - 2  
Senior Center - 4  
School - 2  
civic association  
Community  
Golden Shores Fire Dept training room  
community building  
Aquatic - community center in LHC  
police facility LHC  
library - 3  
A church  
Needles City Public Meeting Chambers, 1111 Bailey Ave, Needles, CA

**14. Would you like to be added to our mailing list?    Yes: 44    No: 10**

## **Appendix C**

### **Glossary of Terms**

---

## Glossary of Terms

---

***Community Survey:*** A survey prepared by DTSC and distributed to the community surrounding a project site. The survey is a tool to gather information about the community's level of awareness and interest in a project site, to understand specific concerns about a project site and to gather project-specific public involvement questions or concerns.

***Department of Toxic Substances Control (DTSC):*** A department within the California Environmental Protection Agency (Cal/EPA) that oversees the investigation and remediation of hazardous waste sites.

***Environmental Impact Report:*** A report designed to examine the potential environmental impacts of proposed activities.

***Groundwater:*** Water beneath the earth's surface that flows through soil and rock openings.

***Hexavalent Chromium:*** A form of chromium. Chromium is a metal naturally found in rocks, soil and the tissue of plants and animals. Hexavalent chromium is used in industrial products and processes and is a known carcinogen when inhaled (i.e., through breathing).

***Information Repository:*** Designated locations that provide public access to site-related documents as required by the DTSC.

***Public Participation Plan:*** A plan that documents community concerns about a site and identifies specific actions to respond to them. The Plan outlines the preferred ways to involve the community in the DTSC decision-making process.

***Scoping:*** A process to gain input from agencies and the public regarding the content of an Environmental Impact Report.