

Appendix K

PG&E Engineering Drawings Referenced in this Work Plan

(Drawing Scans on CD Only)

Part 2 of 2

QTY	UNIT	DESCRIPTION	ORDER NO.
1	EA	CONCRETE	100
2	EA	STEEL	101
3	EA	PIPE	102
4	EA	VALVE	103
5	EA	FLANGE	104
6	EA	GASKET	105
7	EA	WELDING	106
8	EA	PAINT	107
9	EA	INSULATION	108
10	EA	GRINDING	109
11	EA	DRILLING	110
12	EA	WELDING	111
13	EA	PAINT	112
14	EA	INSULATION	113
15	EA	GRINDING	114
16	EA	DRILLING	115
17	EA	WELDING	116
18	EA	PAINT	117
19	EA	INSULATION	118
20	EA	GRINDING	119
21	EA	DRILLING	120
22	EA	WELDING	121
23	EA	PAINT	122
24	EA	INSULATION	123
25	EA	GRINDING	124
26	EA	DRILLING	125
27	EA	WELDING	126
28	EA	PAINT	127
29	EA	INSULATION	128
30	EA	GRINDING	129
31	EA	DRILLING	130

LIST OF MATERIAL

GENERAL NOTES

REFERENCE DRAWING

APPROVED

FOR CONSTRUCTION

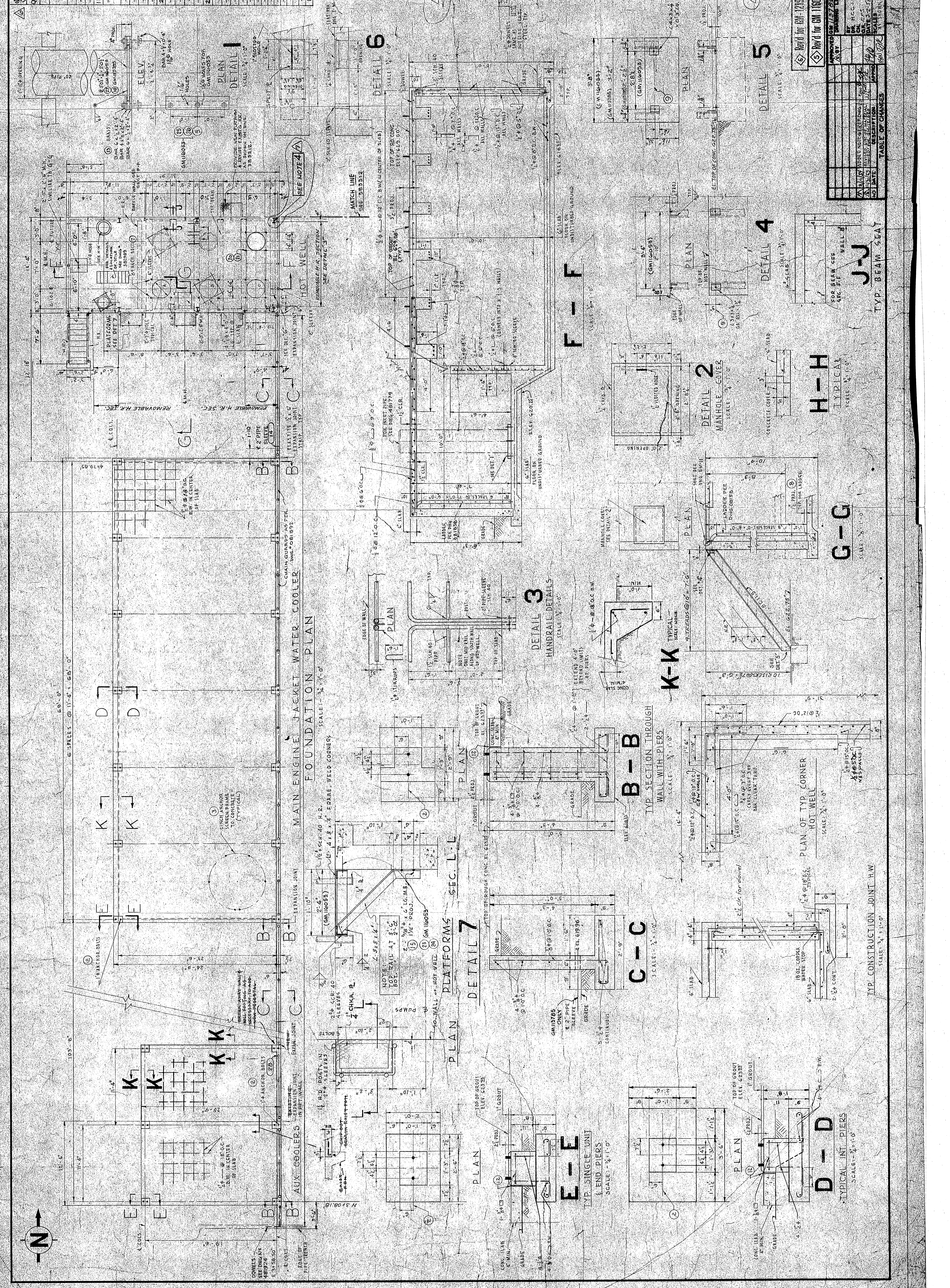
FOR JACKET WATER COOLER

AUX COOLER & HOT WELL

TOP OF COMPRESSOR STATION

PACIFIC GAS AND ELECTRIC COMPANY

481878



FOUNDATION PLAN

SECTION THROUGH WALL WITH PIERS

DETAIL 1

DETAIL 2

DETAIL 3

DETAIL 4

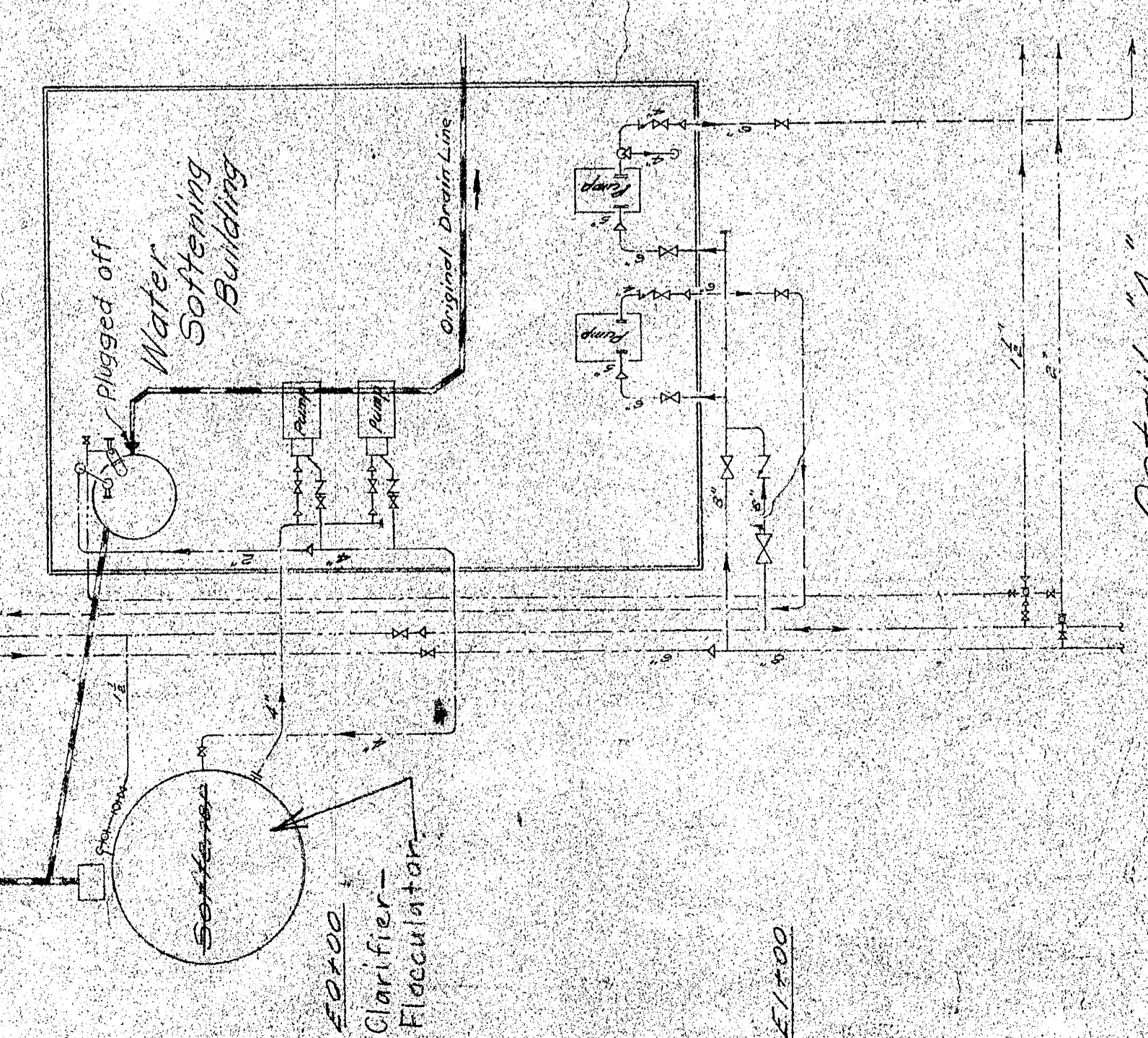
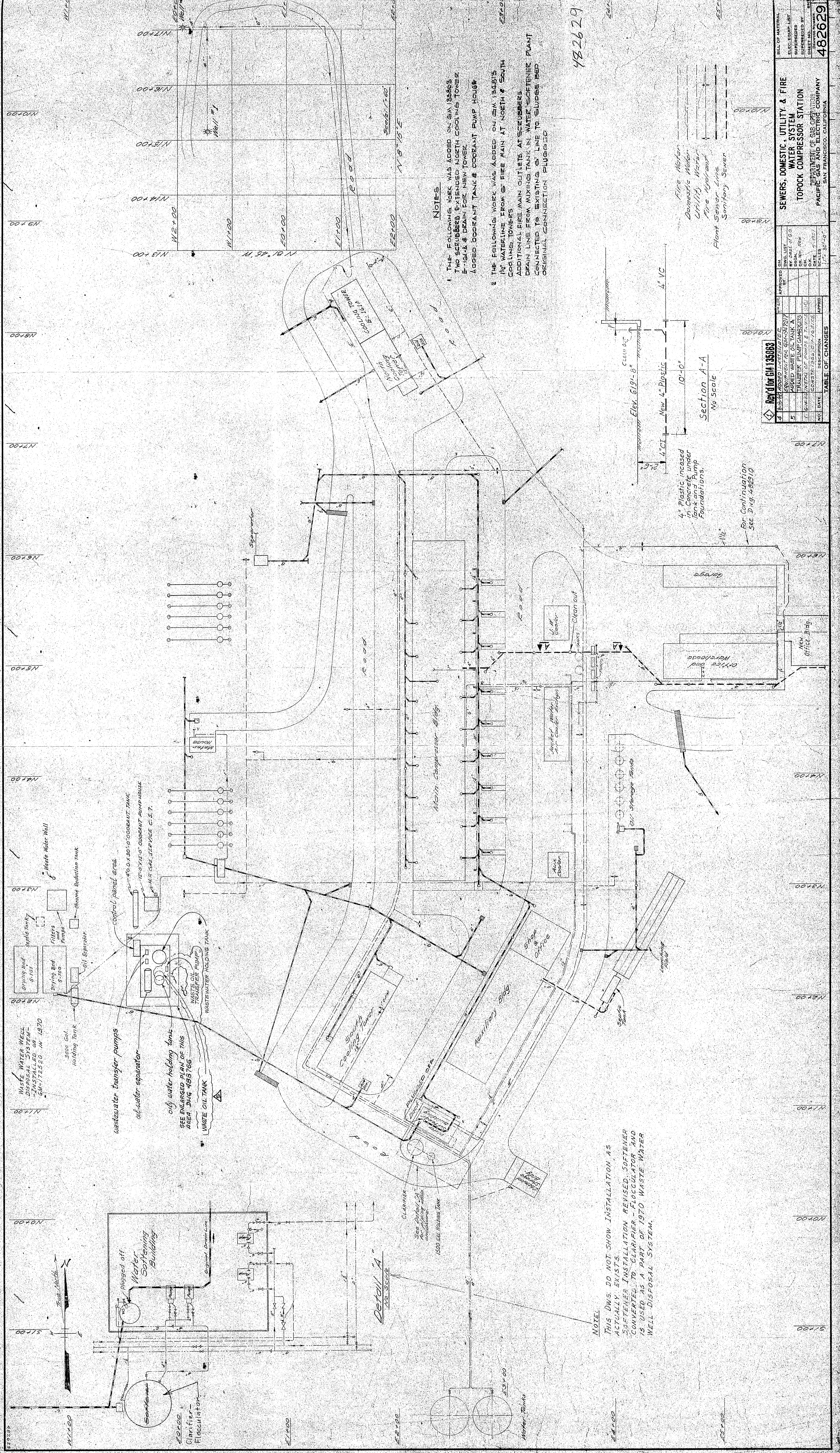
DETAIL 5

DETAIL 6

DETAIL 7

DETAIL 8

DETAIL 9

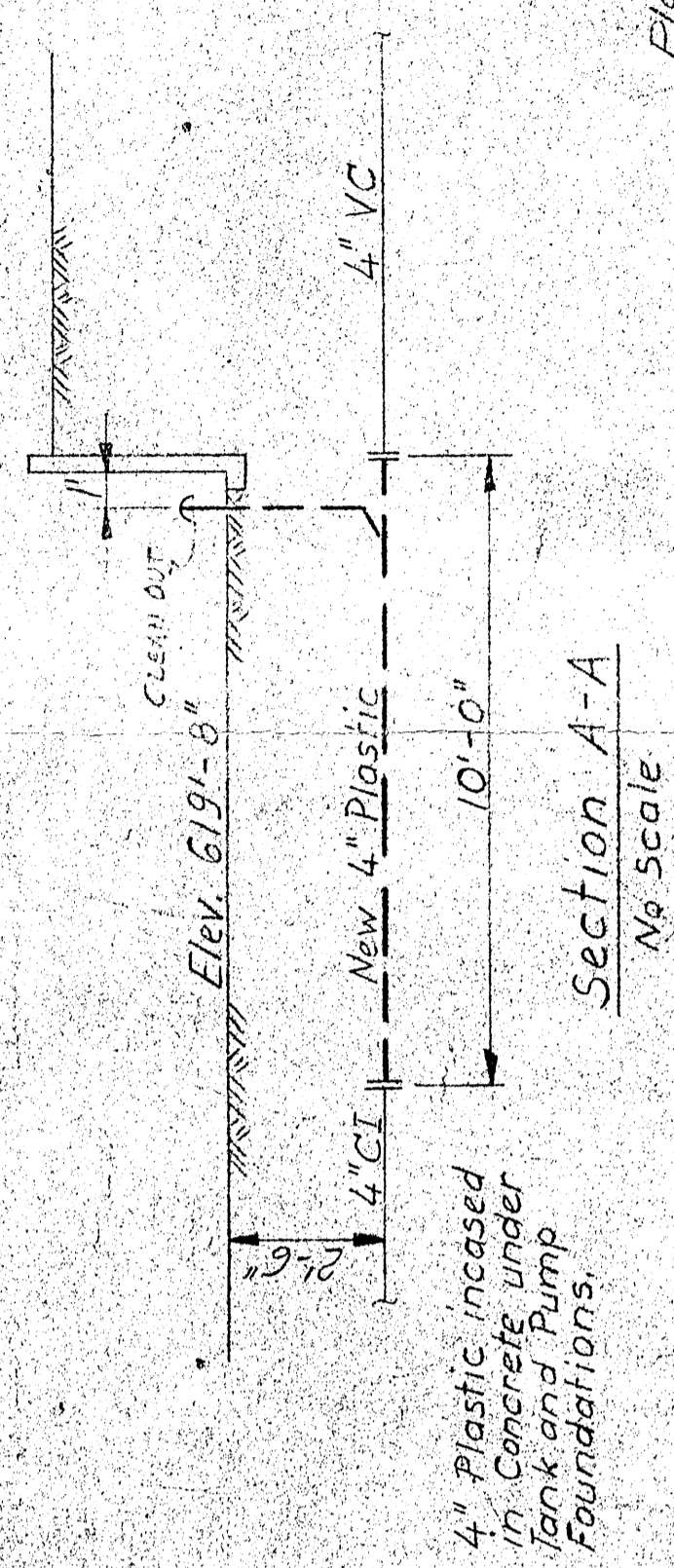


NOTES

- 1. THE FOLLOWING WORK WAS ADDED ON SA 13563 TWO SCRUBBERS EXTENDED NORTH COOLING TOWER 8'-10" & DRAIN FOR NEW TOWER ADDED COOLANT TANK & COOLANT PUMP HOUSE
- 2. THE FOLLOWING WORK WAS ADDED ON SA 13563 1/4" WATERLINE FROM FIRE MAIN AT NORTH & SOUTH COOLING TOWERS ADDITIONAL FIRE MAIN OUTLETS AT SCRUBBERS DRAIN LINE FROM MIXING TANK IN WATER SOFTENER PLANT CONNECTED TO EXISTING 3" LINE TO SUPPLY PIPED ORIGINAL CONNECTION PLUGGED

NOTE: THIS DWS DO NOT SHOW INSTALLATION AS ACTUALLY EXISTS. SOFTENER INSTALLATION REVISED. SOFTENER CONVERTED TO CLARIFIER - FLOCCULATOR AND IS USED AS A PART OF 1970 WASTE WATER WELL DISPOSAL SYSTEM.

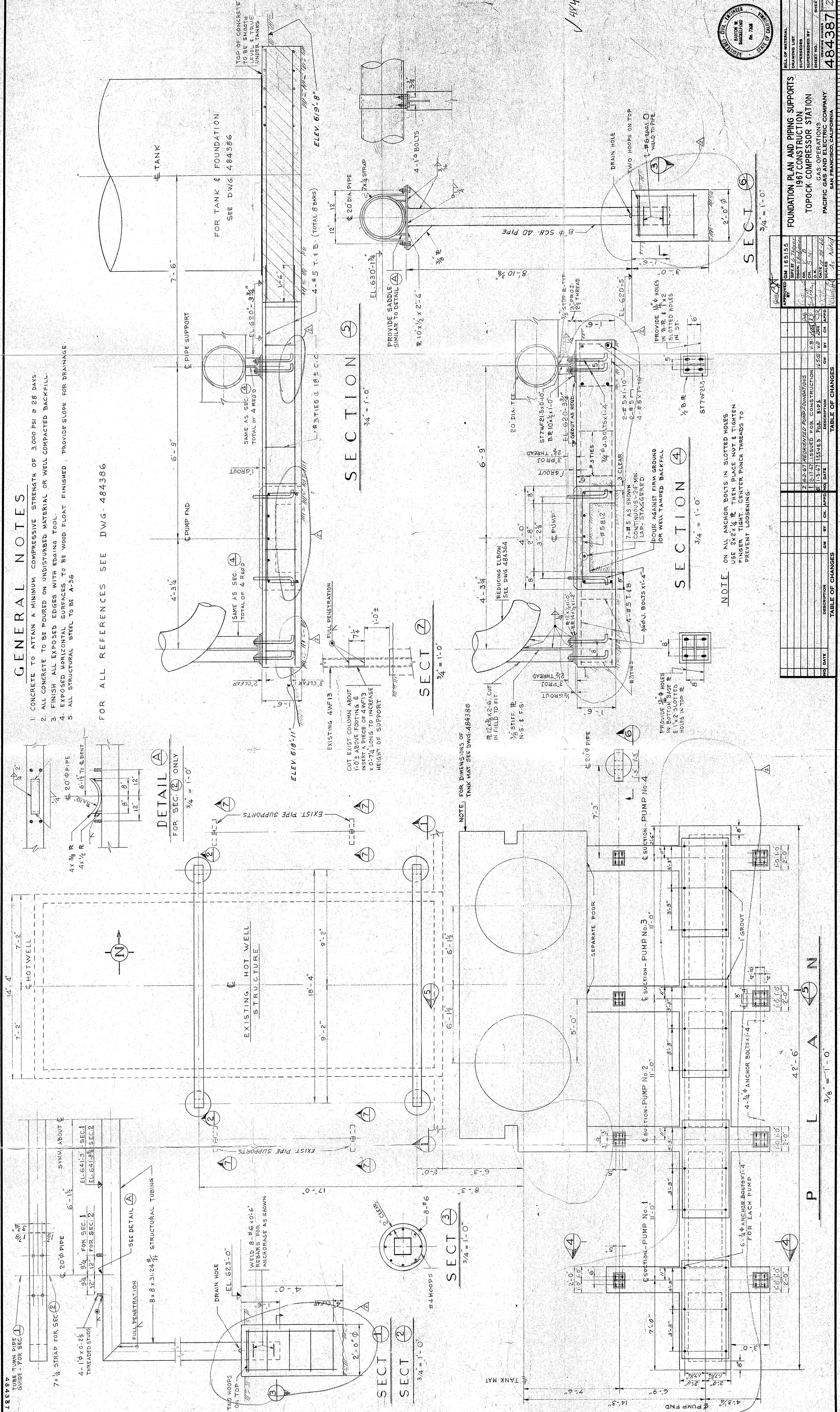
Section A-A
No Scale



Key for SA 13563

NO.	DATE	DESCRIPTION	APPROVED
1	12/1/70	REVISIONS	
2	12/1/70	REVISIONS	
3	12/1/70	REVISIONS	
4	12/1/70	REVISIONS	
5	12/1/70	REVISIONS	

SEWERS, DOMESTIC, UTILITY & FIRE WATER SYSTEM TOPOCK COMPRESSOR STATION DEPARTMENT OF GAS & ELECTRICITY PACIFIC GAS AND ELECTRIC COMPANY SAN FRANCISCO, CALIFORNIA	482629
---	--------



- GENERAL NOTES**
1. CONCRETE TO ATTAIN A MINIMUM COMPRESSIVE STRENGTH OF 3000 PSI @ 28 DAYS.
 2. ALL CONCRETE TO BE POURED ON UNDISTURBED MATERIAL OR WELL COMPACTED BACKFILL.
 3. FINISH ALL EXPOSED EDGES WITH EDGING TOOL.
 4. EXPOSED HORIZONTAL SURFACES TO BE WOOD FLOAT FINISHED, PROVIDE SLOPE FOR DRAINAGE.
 5. ALL STRUCTURAL STEEL TO BE A-36

FOR ALL REFERENCES SEE DWG. 484386

DETAIL A
FOR SEC. 2 ONLY
3/4" = 1'-0"

NOTE: FOR DIMENSIONS OF TANK SEE DWG. 484386

NOTE: ON ALL ANCHOR BOLTS IN SLOTTED HOLES USE 2X2X 1/2" REIN. THEN PLACE NUT & TIGHTEN ANCHOR BOLT WITH WATER PUNCH THREADS TO PREVENT LOOSENING

NO.	DATE	DESCRIPTION	BY	CH.	APP'D.
1					
2					
3					
4					
5					
6					
7					
8					
9					
10					

TABLE OF CHANGES

NO.	DATE	DESCRIPTION	BY	CH.	APP'D.
1					
2					
3					
4					
5					
6					
7					
8					
9					
10					

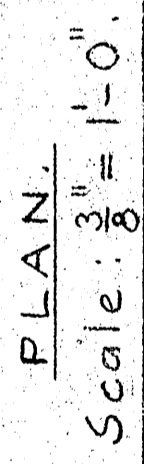
FOUNDATION PLAN AND PIPING SUPPORTS
1967 COMPRESSOR STATION
TOPOCK COMPRESSOR STATION
PACIFIC GAS AND ELECTRIC COMPANY
SAN FRANCISCO, CALIFORNIA

REVISIONS

NO.	DATE	DESCRIPTION	BY	CH.	APP'D.
1					
2					
3					
4					
5					
6					
7					
8					
9					
10					

APPROVED
DATE: 10/1/67
BY: [Signature]
TITLE: [Signature]

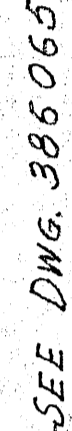
PROJECT NO. 484387
SHEET NO. 2



REFERENCES:

Piping, Sections & details, Waste Water Vell Disposal	DWG 4853570
Piping, Plan-Area No. 5	481775
Sections & details, Area No. 5	481776
Details of Modification to Steel Tank	485341
Schematic Control Piping	485342
Foundation for Clarifier	281915
1500 gals. Holding Tank	386065
Location Plan, Tanks, Equipm. & Piping, Area 13 & 14	4853552

[illegible]



✓485352

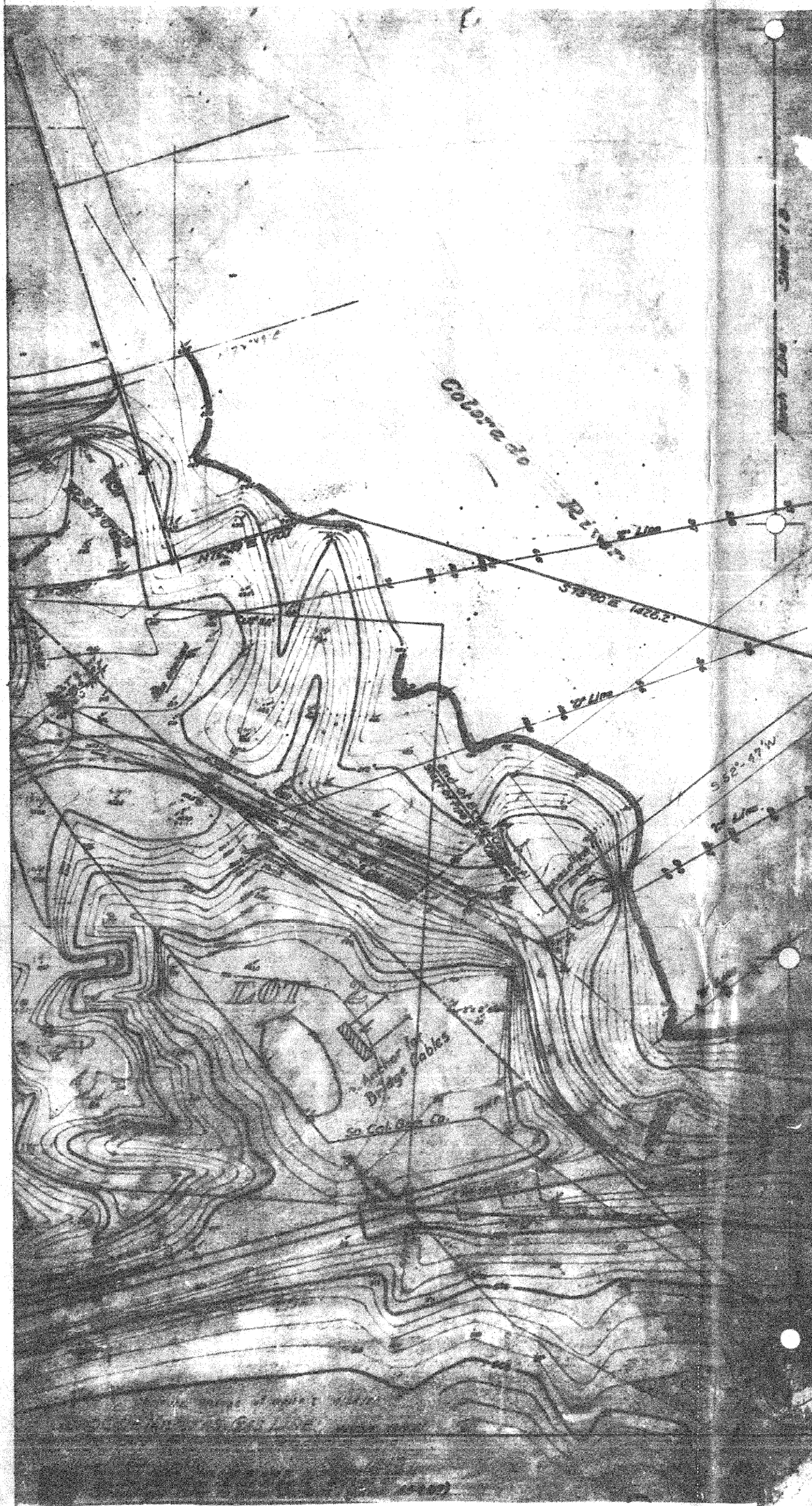
0.70

120
15
18001



- Notes: Changes due to
Water Well System
Relocate Co. Facilities
1. State Freeway Route, relocate new bridge construction
 2. Topock-Milpitas Gas Line conform to Dwg. B-409
 3. All Company facilities boundaries. The Telephone R/W at a specified
 4. New Construction
 5. Telephone Line - field checked
 6. Fence Line, Portion of Plant Roadway plotted from field check - 1965
 7. Office Bldg. added - per G.M. 143029





Notes: Changes due to Freeway Construction

Water Well System: Authorized GM 159114
Relocate Co. Facilities: GM 159118

1. State Freeway Route relocated as shown, due to revised state Survey leading to new bridge construction - new R/W Line shown.
2. Topock Milpitas Gas Line No. 2 (Main 300-B) Survey has been changed to conform to Dwg. B-4093, Sh. 1 - change 20.
3. All Company facilities were removed from within the State Right-of-way boundaries. The Telephone Cable and 4" Gas Line were then placed across the R/W at a specified location. The two Water Wells were abandoned.
4. New Construction: Water Wells #6 and #7 were drilled. - Water Lines - Electric Power to Wells. - New access road to wells. - 4" Gas Line to Wells. - Telephone Poles and Line. - Telephone Cable and Conduit.
5. Telephone Line - field checked. Tap Line to office and Pole numbers added.
6. Fence Line, Portion of Fruit Roadway and North Cooling Tower positions plotted from field check 1965.
7. Office Bldg added - per GM studies - see dwg. 482902



NO.		DESCRIPTION	DATE	BY	CHECKED	APPROVED
4	See Notes for Change C-1	11/1/65	WJ	WJ	WJ	
5	Added Change C-2	11/1/65	WJ	WJ	WJ	
6	Added Change C-3	11/1/65	WJ	WJ	WJ	
7	Added Change C-4	11/1/65	WJ	WJ	WJ	
8	Added Change C-5	11/1/65	WJ	WJ	WJ	
9	Added Change C-6	11/1/65	WJ	WJ	WJ	
10	Added Change C-7	11/1/65	WJ	WJ	WJ	
11	Added Change C-8	11/1/65	WJ	WJ	WJ	
12	Added Change C-9	11/1/65	WJ	WJ	WJ	
13	Added Change C-10	11/1/65	WJ	WJ	WJ	
14	Added Change C-11	11/1/65	WJ	WJ	WJ	
15	Added Change C-12	11/1/65	WJ	WJ	WJ	
16	Added Change C-13	11/1/65	WJ	WJ	WJ	
17	Added Change C-14	11/1/65	WJ	WJ	WJ	
18	Added Change C-15	11/1/65	WJ	WJ	WJ	
19	Added Change C-16	11/1/65	WJ	WJ	WJ	
20	Added Change C-17	11/1/65	WJ	WJ	WJ	
21	Added Change C-18	11/1/65	WJ	WJ	WJ	
22	Added Change C-19	11/1/65	WJ	WJ	WJ	
23	Added Change C-20	11/1/65	WJ	WJ	WJ	
24	Added Change C-21	11/1/65	WJ	WJ	WJ	
25	Added Change C-22	11/1/65	WJ	WJ	WJ	
26	Added Change C-23	11/1/65	WJ	WJ	WJ	
27	Added Change C-24	11/1/65	WJ	WJ	WJ	
28	Added Change C-25	11/1/65	WJ	WJ	WJ	
29	Added Change C-26	11/1/65	WJ	WJ	WJ	
30	Added Change C-27	11/1/65	WJ	WJ	WJ	
31	Added Change C-28	11/1/65	WJ	WJ	WJ	
32	Added Change C-29	11/1/65	WJ	WJ	WJ	
33	Added Change C-30	11/1/65	WJ	WJ	WJ	
34	Added Change C-31	11/1/65	WJ	WJ	WJ	
35	Added Change C-32	11/1/65	WJ	WJ	WJ	
36	Added Change C-33	11/1/65	WJ	WJ	WJ	
37	Added Change C-34	11/1/65	WJ	WJ	WJ	
38	Added Change C-35	11/1/65	WJ	WJ	WJ	
39	Added Change C-36	11/1/65	WJ	WJ	WJ	
40	Added Change C-37	11/1/65	WJ	WJ	WJ	
41	Added Change C-38	11/1/65	WJ	WJ	WJ	
42	Added Change C-39	11/1/65	WJ	WJ	WJ	
43	Added Change C-40	11/1/65	WJ	WJ	WJ	
44	Added Change C-41	11/1/65	WJ	WJ	WJ	
45	Added Change C-42	11/1/65	WJ	WJ	WJ	
46	Added Change C-43	11/1/65	WJ	WJ	WJ	
47	Added Change C-44	11/1/65	WJ	WJ	WJ	
48	Added Change C-45	11/1/65	WJ	WJ	WJ	
49	Added Change C-46	11/1/65	WJ	WJ	WJ	
50	Added Change C-47	11/1/65	WJ	WJ	WJ	
51	Added Change C-48	11/1/65	WJ	WJ	WJ	
52	Added Change C-49	11/1/65	WJ	WJ	WJ	
53	Added Change C-50	11/1/65	WJ	WJ	WJ	
54	Added Change C-51	11/1/65	WJ	WJ	WJ	
55	Added Change C-52	11/1/65	WJ	WJ	WJ	
56	Added Change C-53	11/1/65	WJ	WJ	WJ	
57	Added Change C-54	11/1/65	WJ	WJ	WJ	
58	Added Change C-55	11/1/65	WJ	WJ	WJ	
59	Added Change C-56	11/1/65	WJ	WJ	WJ	
60	Added Change C-57	11/1/65	WJ	WJ	WJ	
61	Added Change C-58	11/1/65	WJ	WJ	WJ	
62	Added Change C-59	11/1/65	WJ	WJ	WJ	
63	Added Change C-60	11/1/65	WJ	WJ	WJ	
64	Added Change C-61	11/1/65	WJ	WJ	WJ	
65	Added Change C-62	11/1/65	WJ	WJ	WJ	
66	Added Change C-63	11/1/65	WJ	WJ	WJ	
67	Added Change C-64	11/1/65	WJ	WJ	WJ	
68	Added Change C-65	11/1/65	WJ	WJ	WJ	
69	Added Change C-66	11/1/65	WJ	WJ	WJ	
70	Added Change C-67	11/1/65	WJ	WJ	WJ	
71	Added Change C-68	11/1/65	WJ	WJ	WJ	
72	Added Change C-69	11/1/65	WJ	WJ	WJ	
73	Added Change C-70	11/1/65	WJ	WJ	WJ	
74	Added Change C-71	11/1/65	WJ	WJ	WJ	
75	Added Change C-72	11/1/65	WJ	WJ	WJ	
76	Added Change C-73	11/1/65	WJ	WJ	WJ	
77	Added Change C-74	11/1/65	WJ	WJ	WJ	
78	Added Change C-75	11/1/65	WJ	WJ	WJ	
79	Added Change C-76	11/1/65	WJ	WJ	WJ	
80	Added Change C-77	11/1/65	WJ	WJ	WJ	
81	Added Change C-78	11/1/65	WJ	WJ	WJ	
82	Added Change C-79	11/1/65	WJ	WJ	WJ	
83	Added Change C-80	11/1/65	WJ	WJ	WJ	
84	Added Change C-81	11/1/65	WJ	WJ	WJ	
85	Added Change C-82	11/1/65	WJ	WJ	WJ	
86	Added Change C-83	11/1/65	WJ	WJ	WJ	
87	Added Change C-84	11/1/65	WJ	WJ	WJ	
88	Added Change C-85	11/1/65	WJ	WJ	WJ	
89	Added Change C-86	11/1/65	WJ	WJ	WJ	
90	Added Change C-87	11/1/65	WJ	WJ	WJ	
91	Added Change C-88	11/1/65	WJ	WJ	WJ	
92	Added Change C-89	11/1/65	WJ	WJ	WJ	
93	Added Change C-90	11/1/65	WJ	WJ	WJ	
94	Added Change C-91	11/1/65	WJ	WJ	WJ	
95	Added Change C-92	11/1/65	WJ	WJ	WJ	
96	Added Change C-93	11/1/65	WJ	WJ	WJ	
97	Added Change C-94	11/1/65	WJ	WJ	WJ	
98	Added Change C-95	11/1/65	WJ	WJ	WJ	
99	Added Change C-96	11/1/65	WJ	WJ	WJ	
100	Added Change C-97	11/1/65	WJ	WJ	WJ	
101	Added Change C-98	11/1/65	WJ	WJ	WJ	
102	Added Change C-99	11/1/65	WJ	WJ	WJ	
103	Added Change C-100	11/1/65	WJ	WJ	WJ	

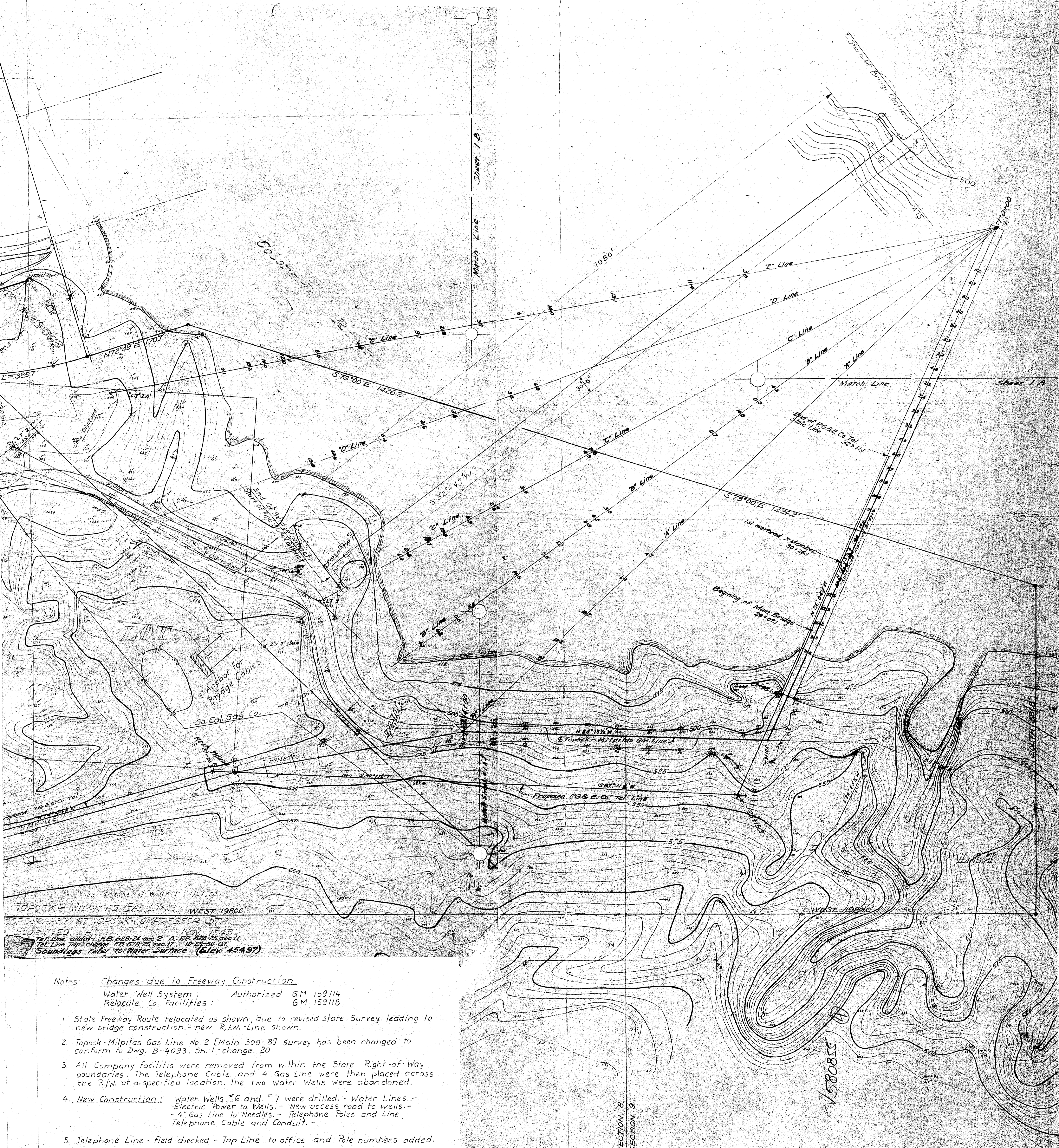


Telephone Slack Span to Santa Fe Poles
To Needles
P.G. & E. Co. (Valve)
P.G. & E. Co.

Tel Cable Conduit
4" Gas Line
Buried in 48" cover
common trench
through R/W Area

LOT 1

P.G. & E. Co.
Tel. Line to
Hinkley Station



Notes: Changes due to Freeway Construction

Water Well System: Authorized GM 159114
Relocate Co. facilities: GM 159118

1. State Freeway Route relocated as shown, due to revised state Survey leading to new bridge construction - new R/W. Line shown.
2. Topock - Milpitas Gas Line No. 2 (Main 300-B) survey has been changed to conform to Dwg. B-4093, Sh. 1-change 20.
3. All Company facilities were removed from within the State Right-of-Way boundaries. The Telephone Cable and 4" Gas Line were then placed across the R/W. at a specified location. The two Water Wells were abandoned.
4. **New Construction:** Water Wells #6 and #7 were drilled. - Water Lines. - Electric Power to Wells. - New access road to wells. - 4" Gas Line to Needles. - Telephone Poles and Line, Telephone Cable and Conduit. -
5. Telephone Line - field checked - Tap Line to office and Pole numbers added.
6. Fence Line, Portion of Plant Roadway and North Cooling Tower positions plotted from field check - 1965.
7. Office Bldg. added - per GM 143029, see dwg. 482902

4	See Notes for Change	SP
3	Added Cross-over from 20" G.E. Main 300-B to 20" G.E. 4" Gas Line	WK
2	CHD TOPO AT STA.	WK

APPROVED BY	DATE
BY DEPT. OF G.E.	11-57
DATE	11-57
DATE	11-57

TOPOGRAPHY COLORADO RIVER CROSSING
TO TOPOCK COMPRESSOR STATION
DEPARTMENT OF GAS OPERATION
PACIFIC GAS AND ELECTRIC COMPANY
SAN FRANCISCO, CALIFORNIA

BILL OF MATERIAL
SUP. REDES. SUPERSEDED BY
SHEET NO. 580855
4