

Appendix B

Aerial Photographs

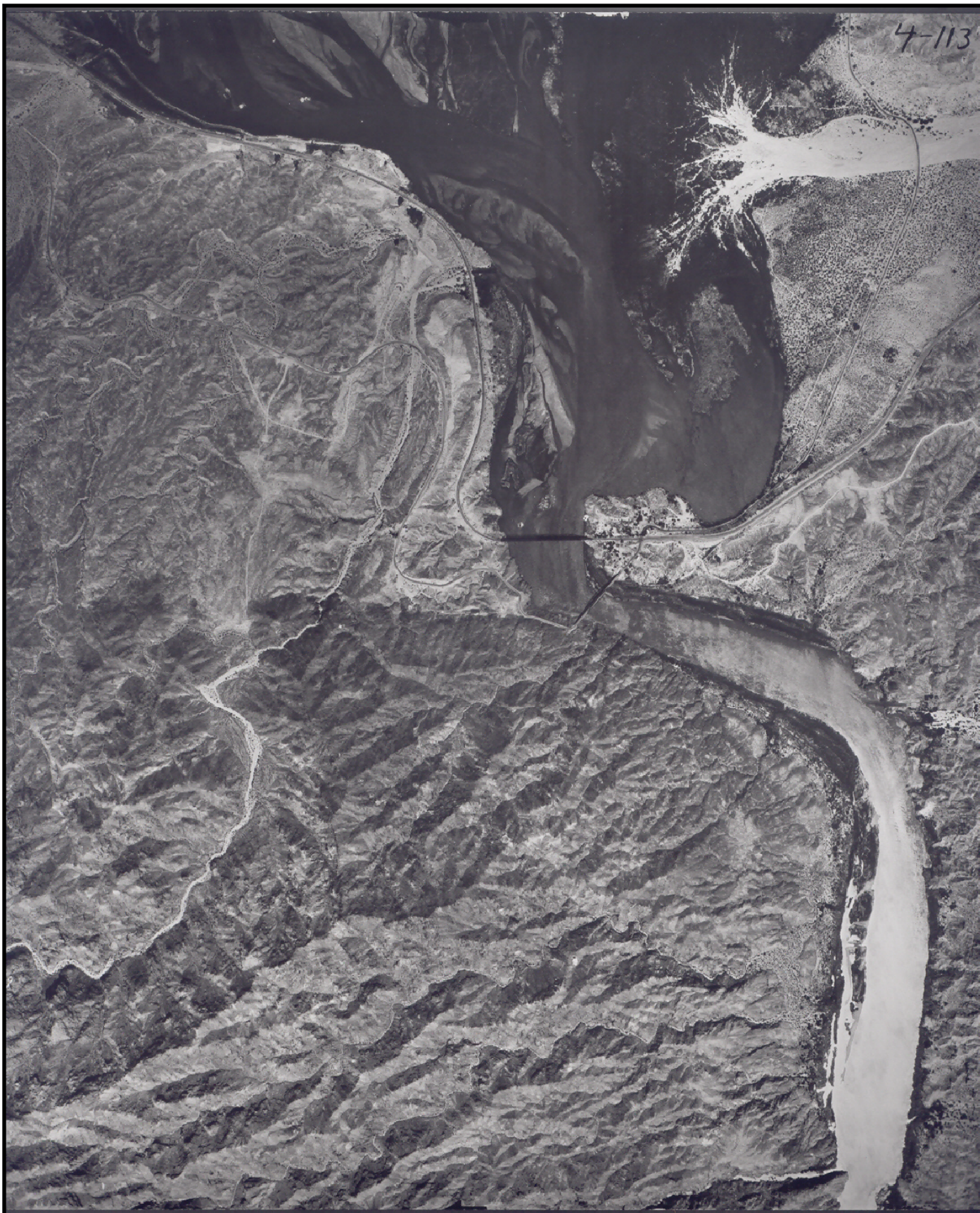


Date: 01/12/36
Flight/Frame(s): C-3821/75
Source: Fairchild Aerial Photography Collection
Whittier College
Whittier, CA 90608

FIGURE 3-8
AERIAL PHOTOGRAPH
JANUARY 12, 1936

RCRA FACILITY INVESTIGATION (RFI)
PG&E TOPOCK COMPRESSOR STATION
NEEDLES, CALIFORNIA

CH2MHILL



Date: 04/24/42
Flight/Frame(s): C-7800/4:113
Source: Fairchild Aerial Photography Collection
Whittier College
Whittier, CA 90608

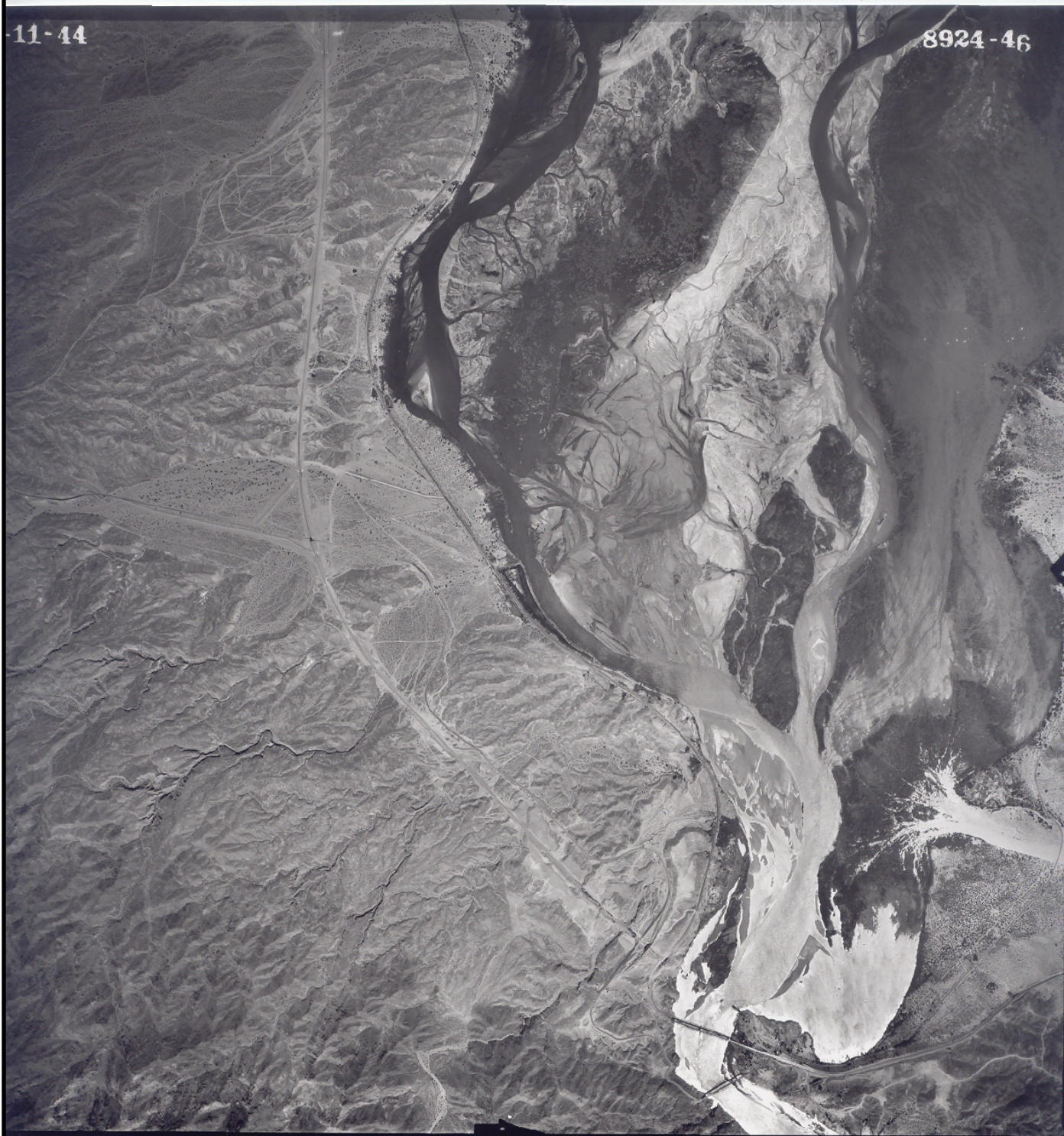
FIGURE 3-9
AERIAL PHOTOGRAPH
APRIL 24, 1942

RCRA FACILITY INVESTIGATION (RFI)
PG&E TOPOCK COMPRESSOR STATION
NEEDLES, CALIFORNIA

CH2MHILL

11-44

8924-46



Date: 05/11/44
Flight/Frame(s): C-8924/Section A:46
Source: Fairchild Aerial Photography Collection
Whittier College
Whittier, CA 90608

FIGURE 3-10
AERIAL PHOTOGRAPH
MAY 11, 1944

RCRA FACILITY INVESTIGATION (RFI)
PG&E TOPOCK COMPRESSOR STATION
NEEDLES, CALIFORNIA

CH2MHILL

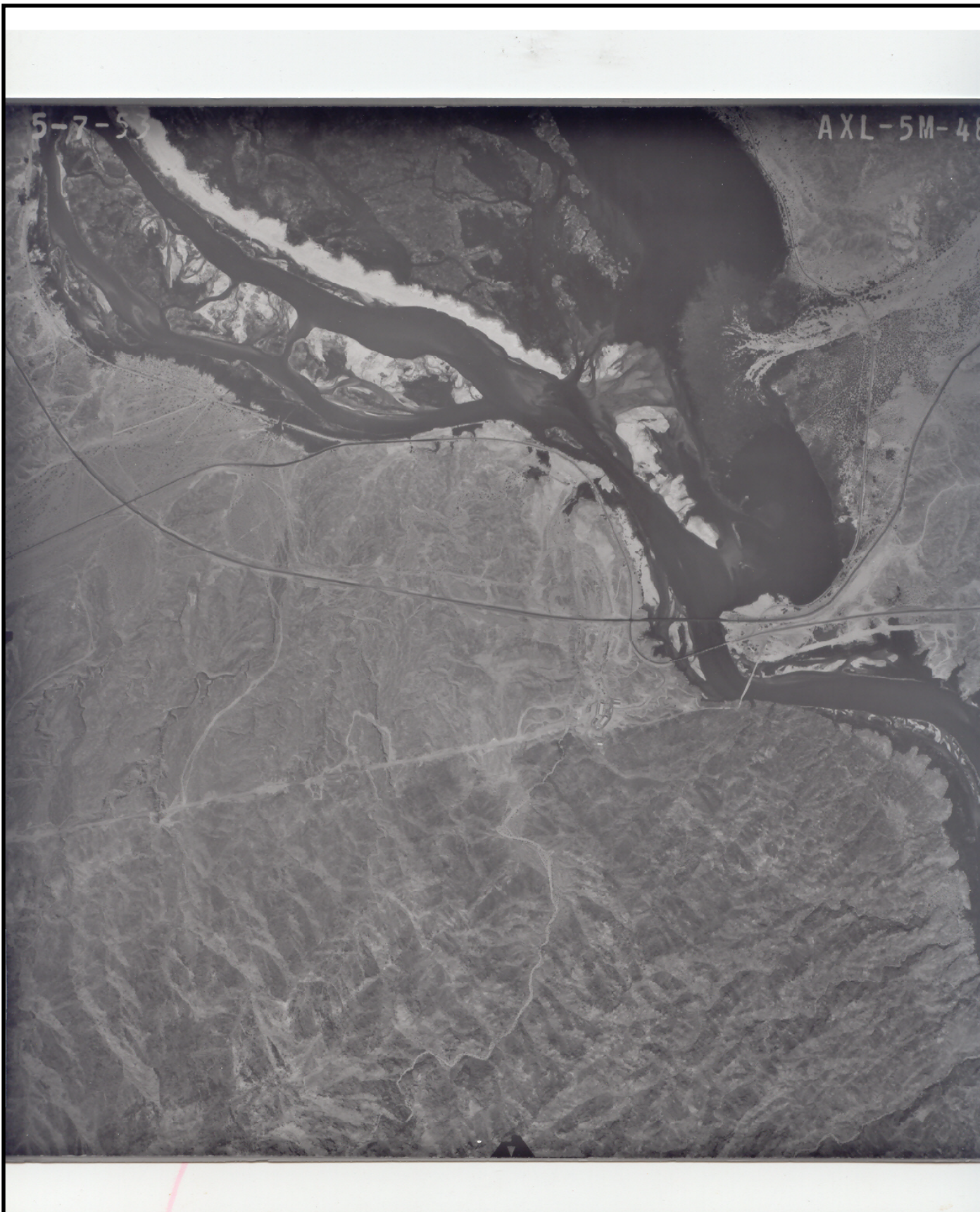


Date: 09/30/47
Flight/Frame(s): GS-EU 1-5
Source: USGS Rocky Mountain Mapping Center
Earth Science Information Center
Box 25046, Stop 504, DFC
Denver, CO 80225

FIGURE 3-11
AERIAL PHOTOGRAPH
SEPTEMBER 30, 1947

RCRA FACILITY INVESTIGATION (RFI)
PG&E TOPOCK COMPRESSOR STATION
NEEDLES, CALIFORNIA

CH2MHILL



Date: 05/07/53
Flight/Frame(s): AXL-5M-48, AXL-5M-49
Source: USDA photo via
County of San Bernardino Flood Control District
825 E. Third Street
San Bernardino, CA 92415-0835

FIGURE 3-12
AERIAL PHOTOGRAPH
MAY 7, 1953

RCRA FACILITY INVESTIGATION (RFI)
PG&E TOPOCK COMPRESSOR STATION
NEEDLES, CALIFORNIA

CH2MHILL

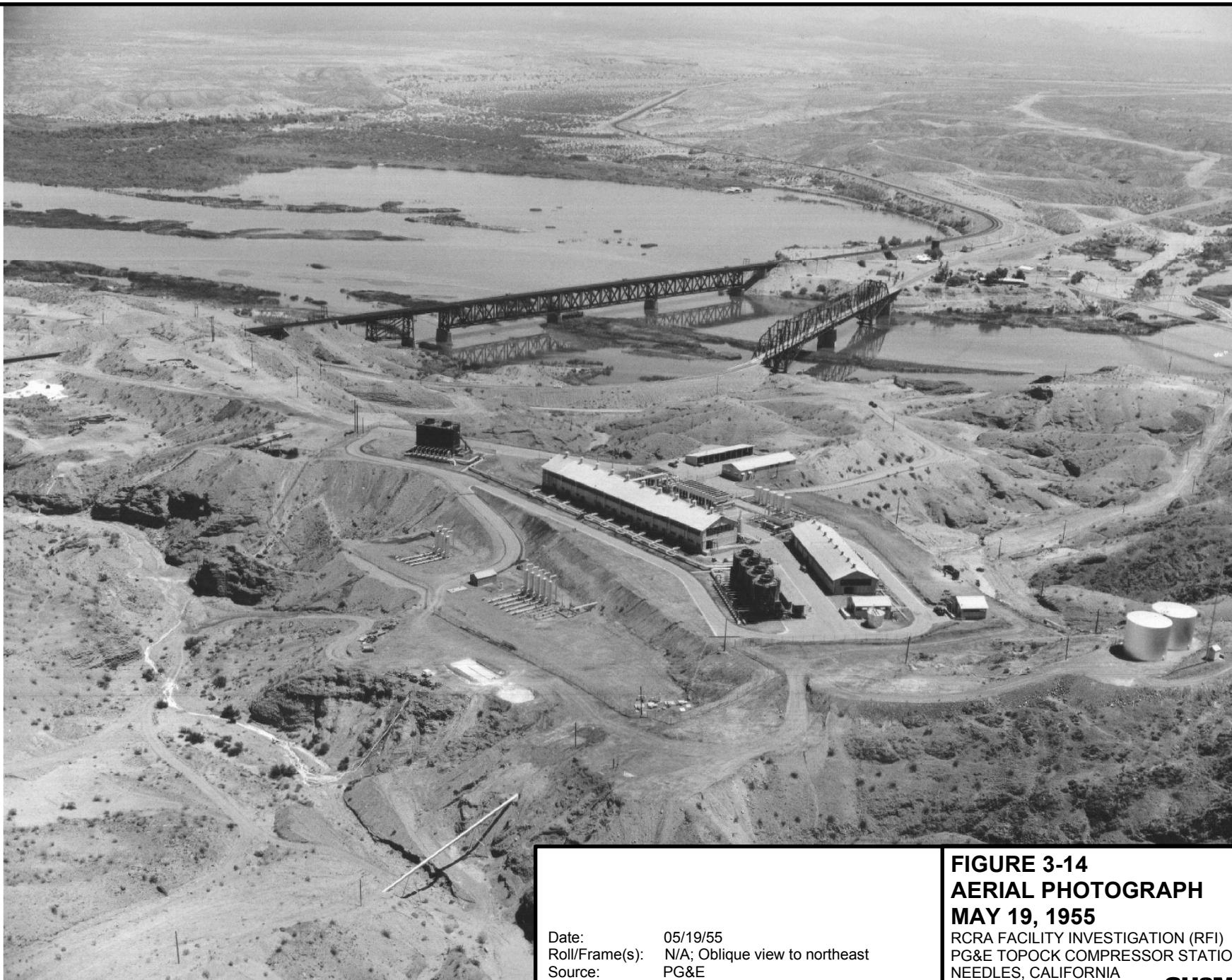


Date: 05/24/55
Roll/Frame(s): 55W 8015, 8016
Source: NOAA National Geodetic Survey, SSMC#3
Information Services Branch, N/NGS12
1315 East West Highway
Silver Spring, MD 20910

FIGURE 3-13
AERIAL PHOTOGRAPH
MAY 24, 1955

RCRA FACILITY INVESTIGATION (RFI)
PG&E TOPOCK COMPRESSOR STATION
NEEDLES, CALIFORNIA

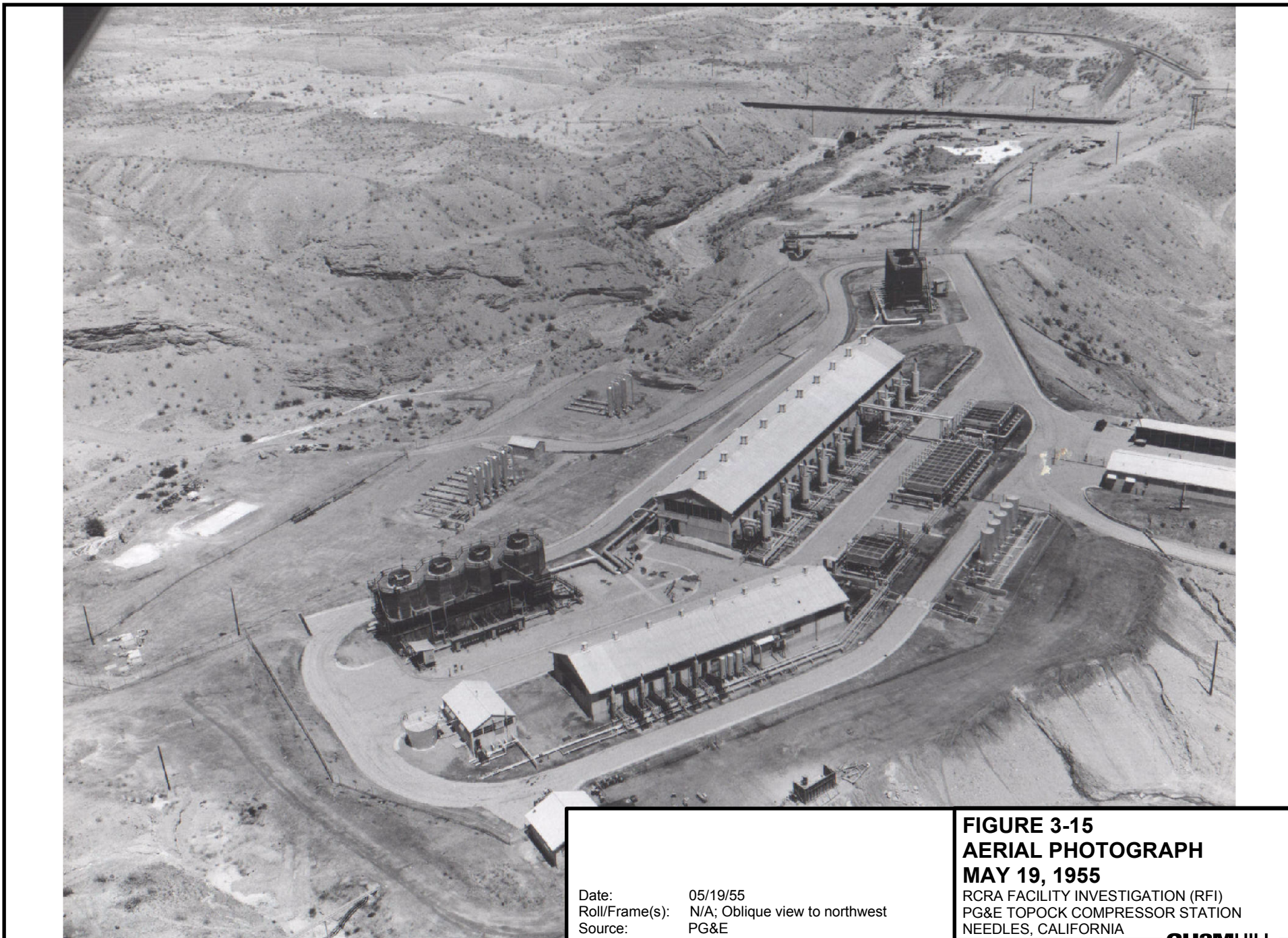
CH2MHILL



Date: 05/19/55
Roll/Frame(s): N/A; Oblique view to northeast
Source: PG&E

FIGURE 3-14
AERIAL PHOTOGRAPH
MAY 19, 1955
RCRA FACILITY INVESTIGATION (RFI)
PG&E TOPOCK COMPRESSOR STATION
NEEDLES, CALIFORNIA

CH2MHILL



Date: 05/19/55
Roll/Frame(s): N/A; Oblique view to northwest
Source: PG&E

FIGURE 3-15
AERIAL PHOTOGRAPH
MAY 19, 1955
RCRA FACILITY INVESTIGATION (RFI)
PG&E TOPOCK COMPRESSOR STATION
NEEDLES, CALIFORNIA

CH2MHILL



Date: 11/04/61
Roll/Frame(s): 61S 7907
Source: NOAA National Geodetic Survey, SSMC#3
Information Services Branch, N/NGS12
1315 East West Highway
Silver Spring, MD 20910

FIGURE 3-16
AERIAL PHOTOGRAPH
NOVEMBER 04, 1961

RCRA FACILITY INVESTIGATION (RFI)
PG&E TOPOCK COMPRESSOR STATION
NEEDLES, CALIFORNIA

CH2MHILL



Date: 07/24/62
Roll/Frame(s): 62S 9892,9893
Source: NOAA National Geodetic Survey, SSMC#3
Information Services Branch, N/NGS12
1315 East West Highway
Silver Spring, MD 20910

FIGURE 3-17
AERIAL PHOTOGRAPH
JULY 24, 1962

RCRA FACILITY INVESTIGATION (RFI)
PG&E TOPOCK COMPRESSOR STATION
NEEDLES, CALIFORNIA

CH2MHILL



Date: 05/18/64
Roll/Frame(s): BR 423-5-125, BR 432-5-126
Source: US Bureau of Reclamation
Lower Colorado Region
P.O. Box 61470
Boulder City, NV 89006-1470

FIGURE 3-18
AERIAL PHOTOGRAPH
MAY 18, 1964

RCRA FACILITY INVESTIGATION (RFI)
PG&E TOPOCK COMPRESSOR STATION
NEEDLES, CALIFORNIA

CH2MHILL



Date: 10/06/66
Flight/Frame(s): 08-SBd 7-2, 7-3
Source: California Department of Transportation
1120 N Street
Sacramento, CA 94273

FIGURE 3-19
AERIAL PHOTOGRAPH
OCTOBER 6, 1966

RCRA FACILITY INVESTIGATION (RFI)
PG&E TOPOCK COMPRESSOR STATION
NEEDLES, CALIFORNIA

CH2MHILL

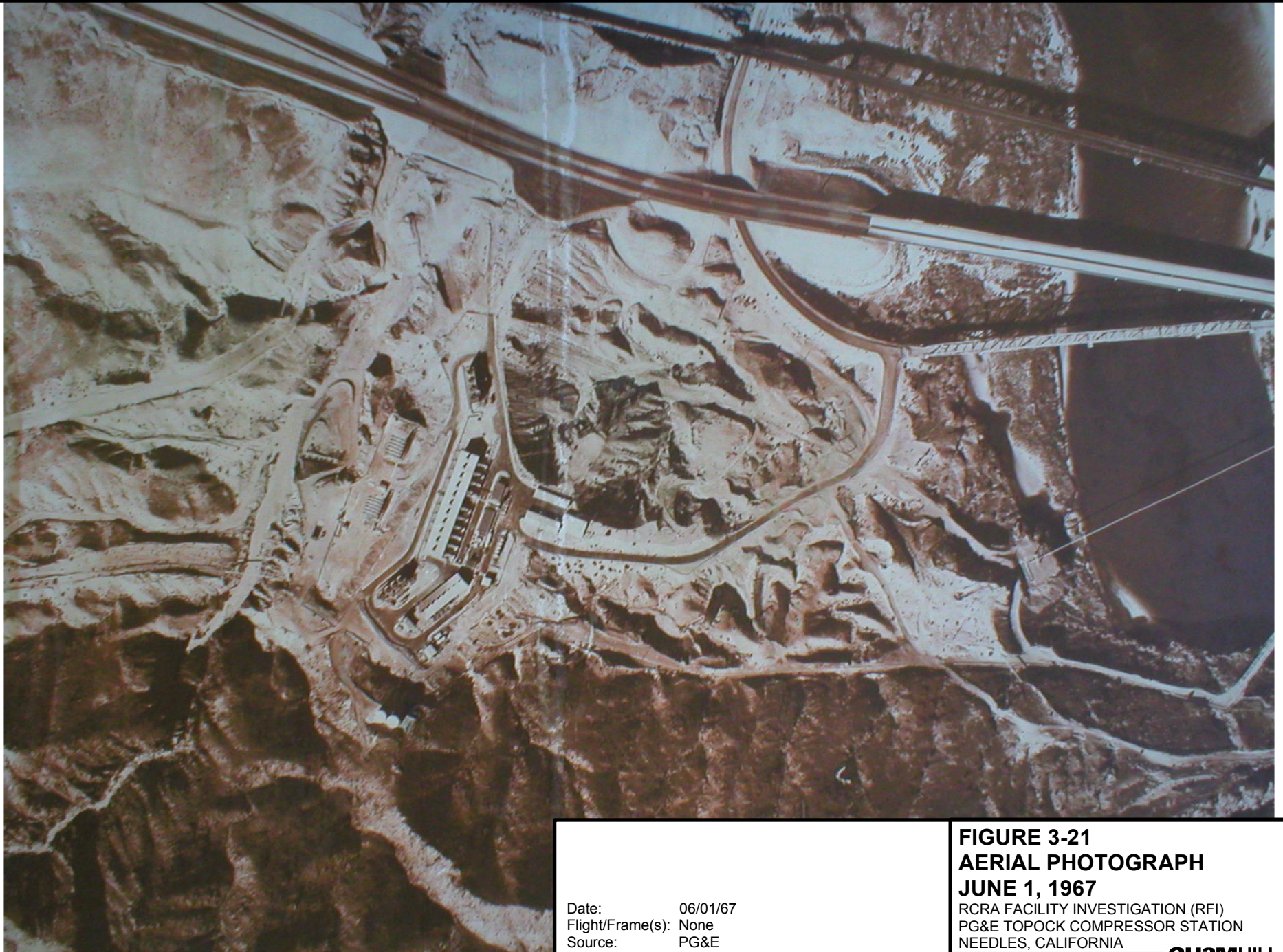


Date: 05/22/67
 Roll/Frame(s): BR 423-1-133
 Source: US Bureau of Reclamation
 Lower Colorado Region
 P.O. Box 61470
 Boulder City, NV 89006-1470

FIGURE 3-20
AERIAL PHOTOGRAPH
MAY 22, 1967

RCRA FACILITY INVESTIGATION (RFI)
 PG&E TOPOCK COMPRESSOR STATION
 NEEDLES, CALIFORNIA

CH2MHILL

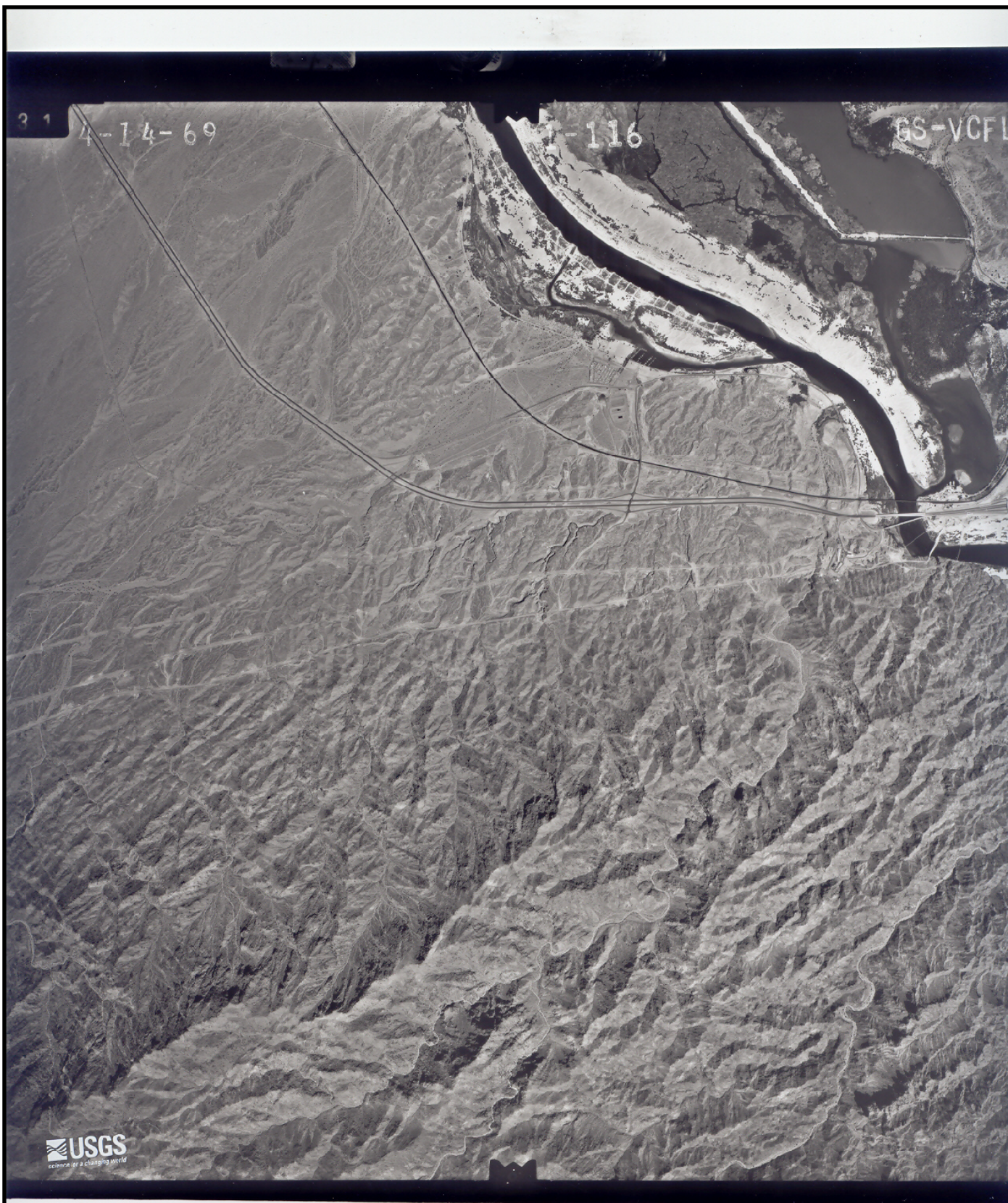


Date: 06/01/67
Flight/Frame(s): None
Source: PG&E

FIGURE 3-21
AERIAL PHOTOGRAPH
JUNE 1, 1967

RCRA FACILITY INVESTIGATION (RFI)
PG&E TOPOCK COMPRESSOR STATION
NEEDLES, CALIFORNIA

CH2MHILL

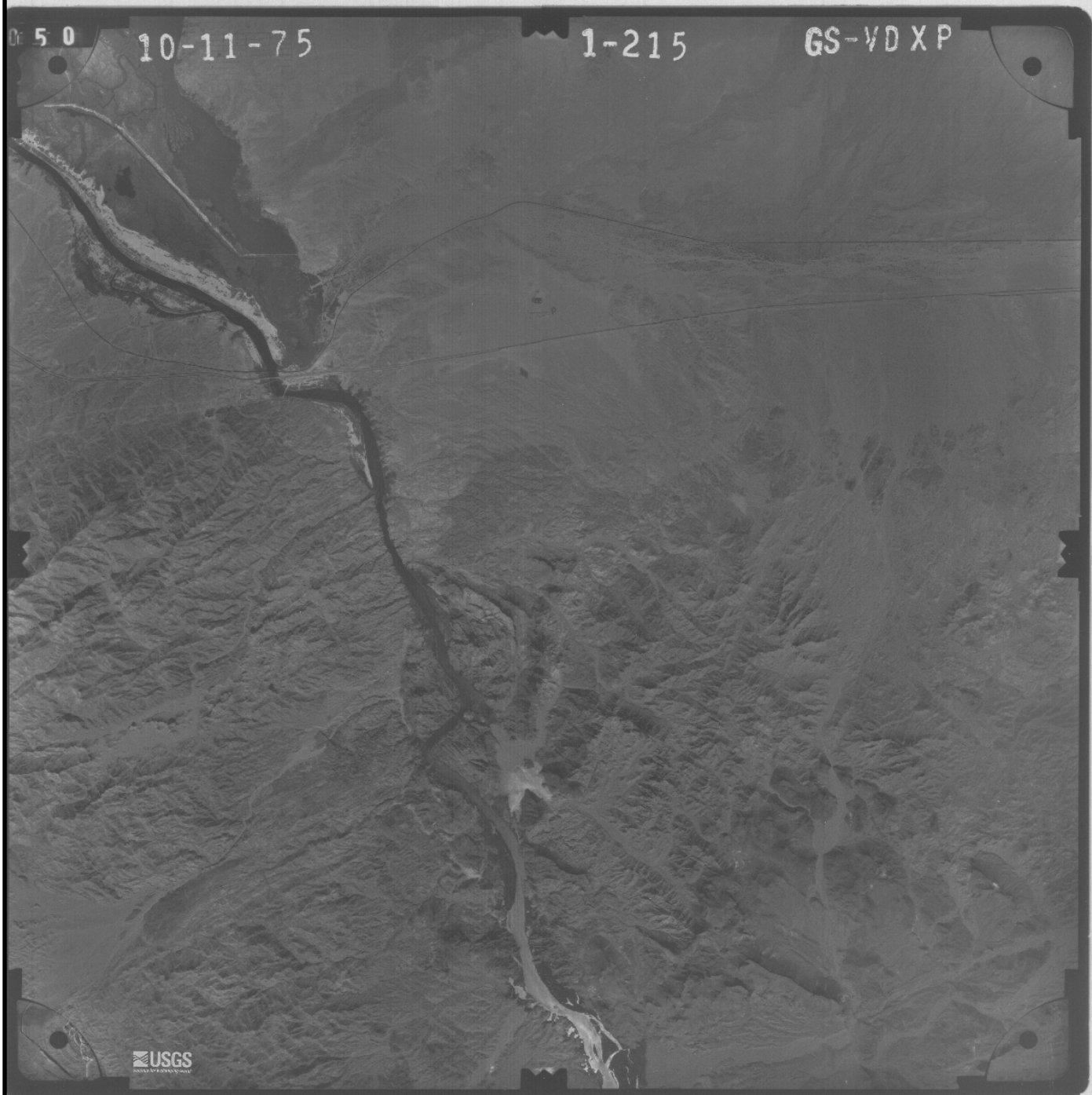


Date: 04/14/69
Roll/Frame(s): GS-VCFL 1-160
Source: USGS Rocky Mountain Mapping Center
Earth Science Information Center
Box 25046, Stop 504, DFC
Denver, CO 80225

FIGURE 3-22
AERIAL PHOTOGRAPH
APRIL 14, 1969

RCRA FACILITY INVESTIGATION (RFI)
PG&E TOPOCK COMPRESSOR STATION
NEEDLES, CALIFORNIA

CH2MHILL



Date: 10/11/75
Roll/Frame(s): GS-VDXP 1-215
Source: USGS Rocky Mountain Mapping Center
Earth Science Information Center
Box 25046, Stop 504, DFC
Denver, CO 80225

FIGURE 3-23
AERIAL PHOTOGRAPH
OCTOBER 11, 1975

RCRA FACILITY INVESTIGATION (RFI)
PG&E TOPOCK COMPRESSOR STATION
NEEDLES, CALIFORNIA

CH2MHILL



Date: 07/08/83
Roll/Frame(s): 421 BR 212 303
Source: US Bureau of Reclamation
Lower Colorado Region
P.O. Box 61470
Boulder City, NV 89006-1470

FIGURE 3-24
AERIAL PHOTOGRAPH
JULY 8, 1983

RCRA FACILITY INVESTIGATION (RFI)
PG&E TOPOCK COMPRESSOR STATION
NEEDLES, CALIFORNIA

CH2MHILL





11-2-97

2

Date: 11/02/97
 Roll/Frame(s): 97096-1,2,3
 Source: PG&E

FIGURE 3-26
AERIAL PHOTOGRAPH
NOVEMBER 2, 1997

RCRA FACILITY INVESTIGATION (RFI)
 PG&E TOPOCK COMPRESSOR STATION
 NEEDLES, CALIFORNIA

CH2MHILL



FIGURE 3-27
AERIAL PHOTOGRAPH
MAY 19, 2004

RCRA FACILITY INVESTIGATION (RFI)
PG&E TOPECO COMPRESSOR STATION
NEEDLES, CALIFORNIA

CH2MHILL

Date: 04/20/04
Roll/Frame(s): N/A
Source: PG&E