

Soil Investigation Milestones 2011 – 2012

Soil RFI/RI Work Plan
• Submit May 6, 2011

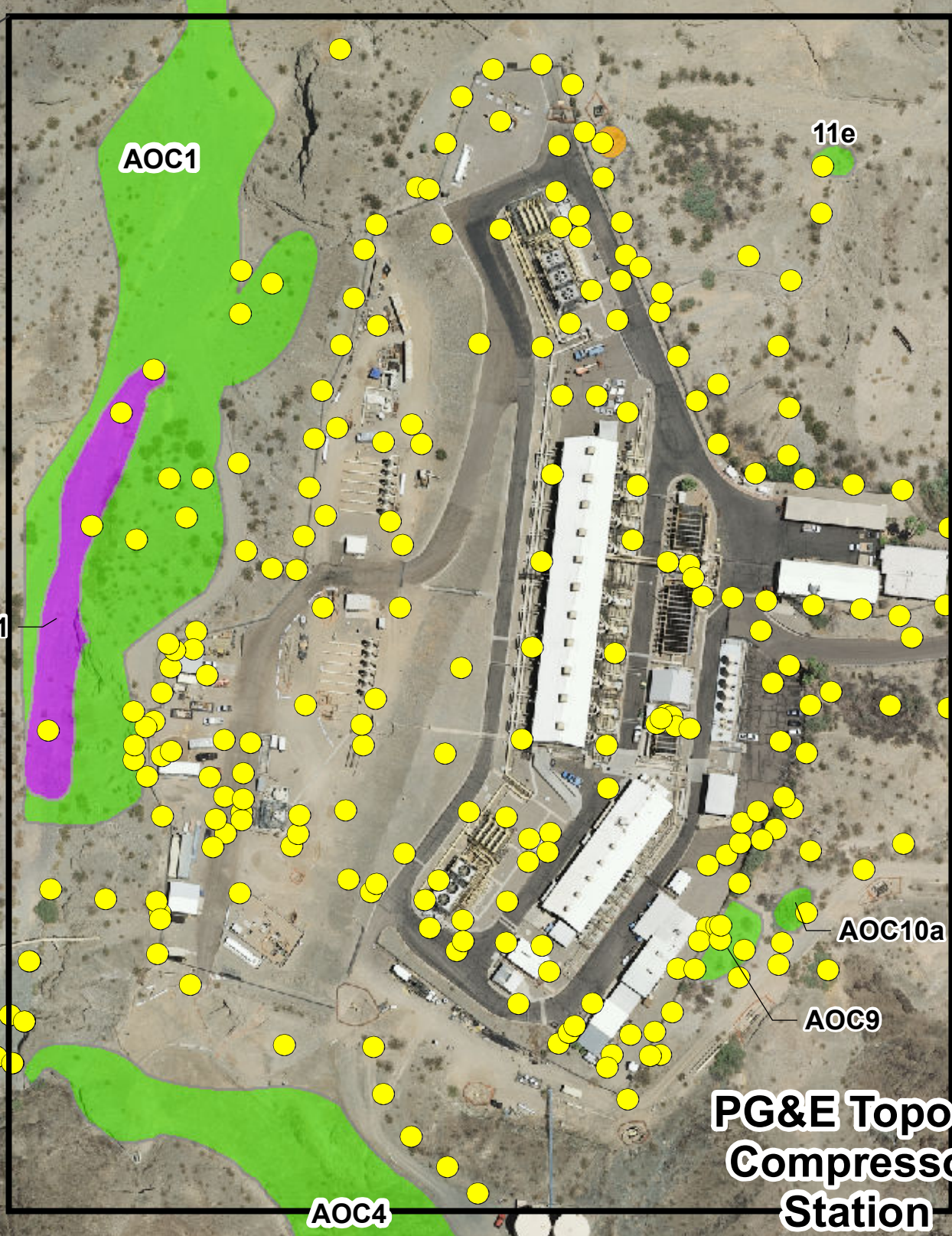
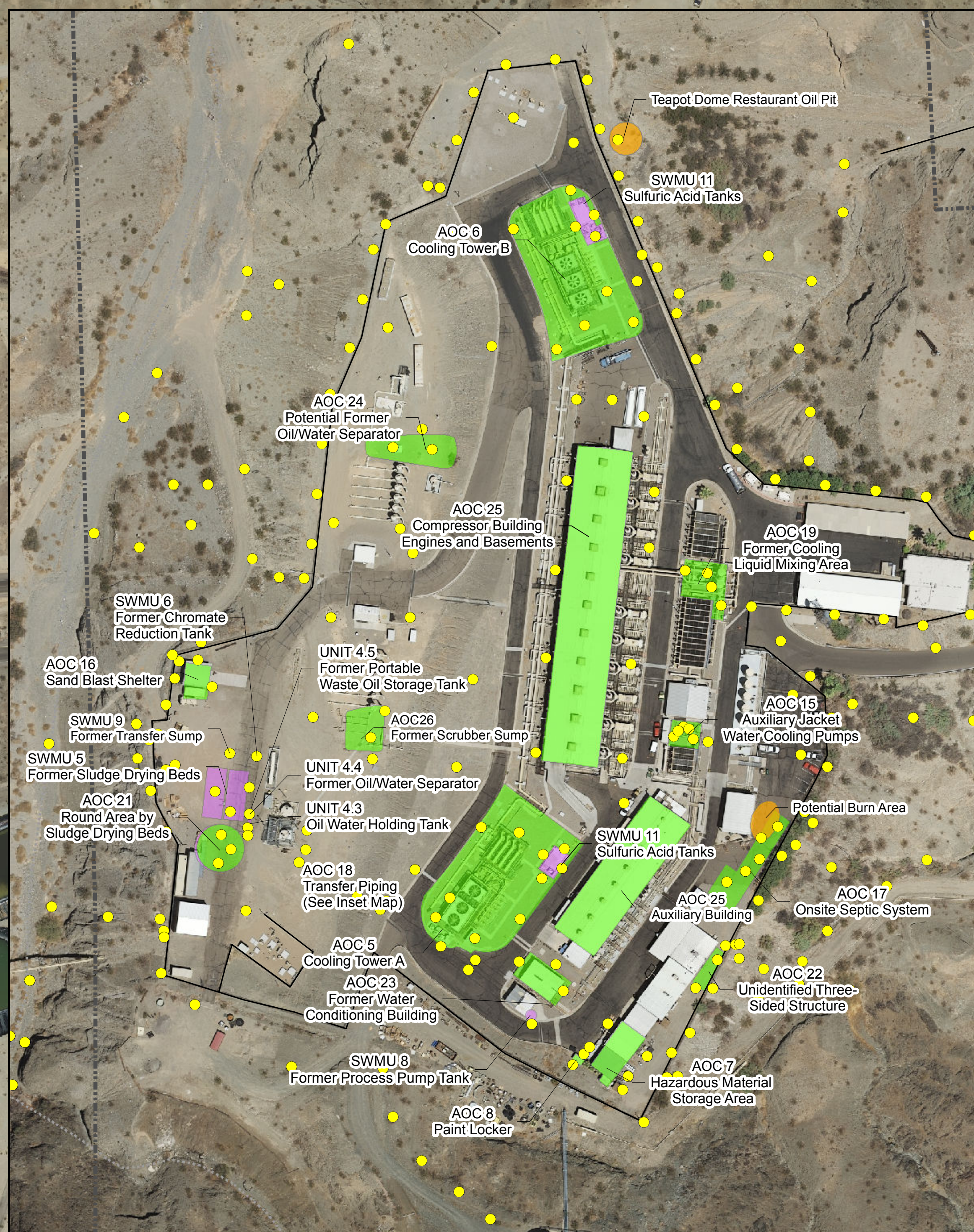
Review/Consultation

- CWG/Tribes – May 11 to August 1
- Tribal Consultation (Section 106) – May 11 to August 1

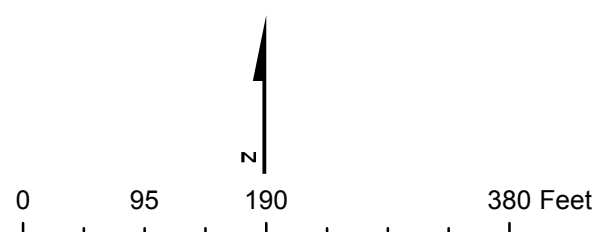
Comment Clarification
• September 1 to November 9

Agency Approval
• March 2012

Field Implementation
• Second quarter 2012



- LEGEND**
- Proposed Soil Sample Location
 - Area of Concern
 - Solid Waste Management Unit
 - Other



**SOIL WORK PLAN PROPOSED
SOIL SAMPLE LOCATIONS**
PG&E TOPOCK COMPRESSOR STATION
NEEDLES, CALIFORNIA