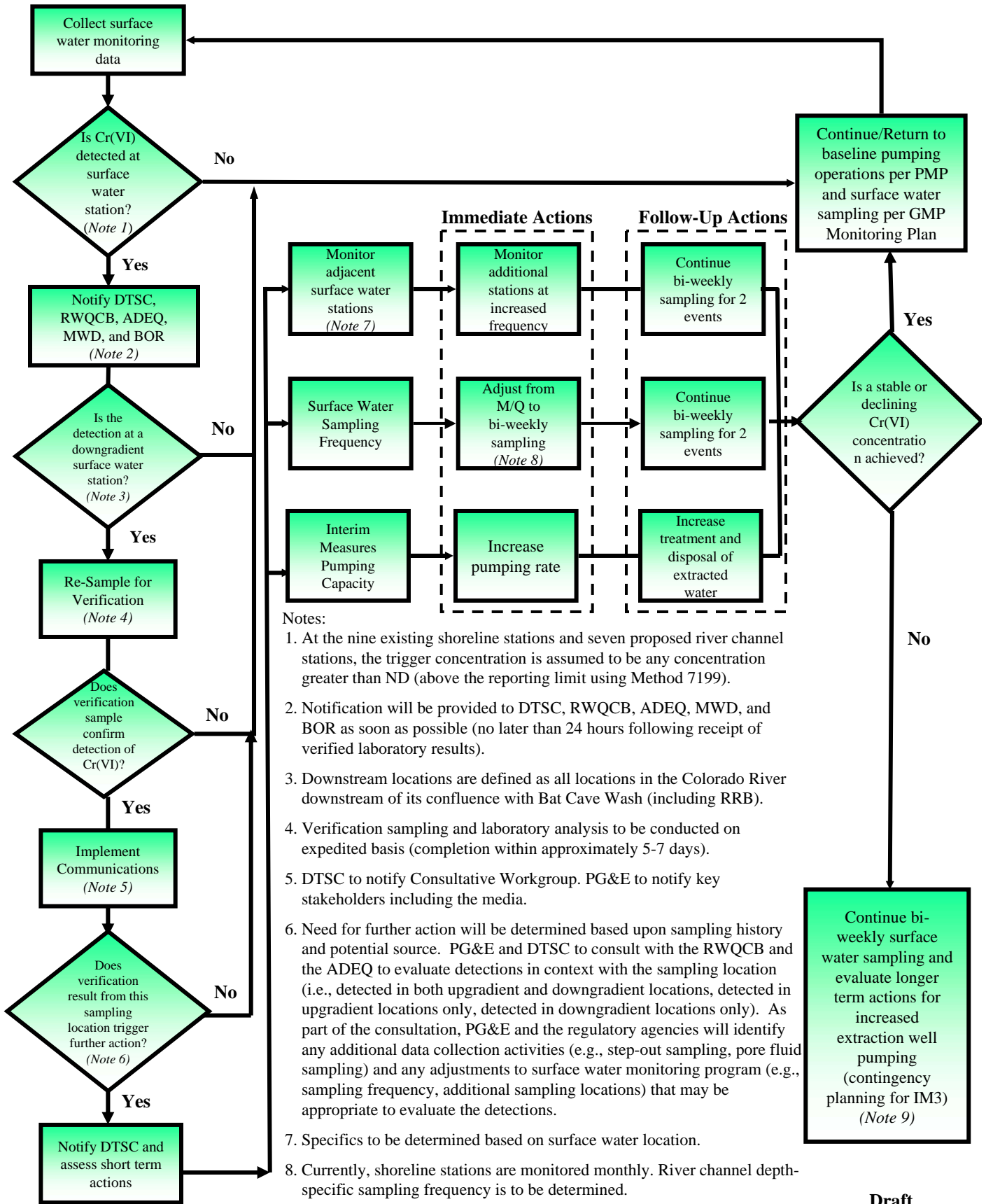


# Contingency Planning for Surface Water Monitoring

June 2005 - Draft Rev 2



- Notes:
- At the nine existing shoreline stations and seven proposed river channel stations, the trigger concentration is assumed to be any concentration greater than ND (above the reporting limit using Method 7199).
  - Notification will be provided to DTSC, RWQCB, ADEQ, MWD, and BOR as soon as possible (no later than 24 hours following receipt of verified laboratory results).
  - Downstream locations are defined as all locations in the Colorado River downstream of its confluence with Bat Cave Wash (including RRB).
  - Verification sampling and laboratory analysis to be conducted on expedited basis (completion within approximately 5-7 days).
  - DTSC to notify Consultative Workgroup. PG&E to notify key stakeholders including the media.
  - Need for further action will be determined based upon sampling history and potential source. PG&E and DTSC to consult with the RWQCB and the ADEQ to evaluate detections in context with the sampling location (i.e., detected in both upgradient and downgradient locations, detected in upgradient locations only, detected in downgradient locations only). As part of the consultation, PG&E and the regulatory agencies will identify any additional data collection activities (e.g., step-out sampling, pore fluid sampling) and any adjustments to surface water monitoring program (e.g., sampling frequency, additional sampling locations) that may be appropriate to evaluate the detections.
  - Specifics to be determined based on surface water location.
  - Currently, shoreline stations are monitored monthly. River channel depth-specific sampling frequency is to be determined.
  - DTSC to evaluate monitoring program and additional steps.