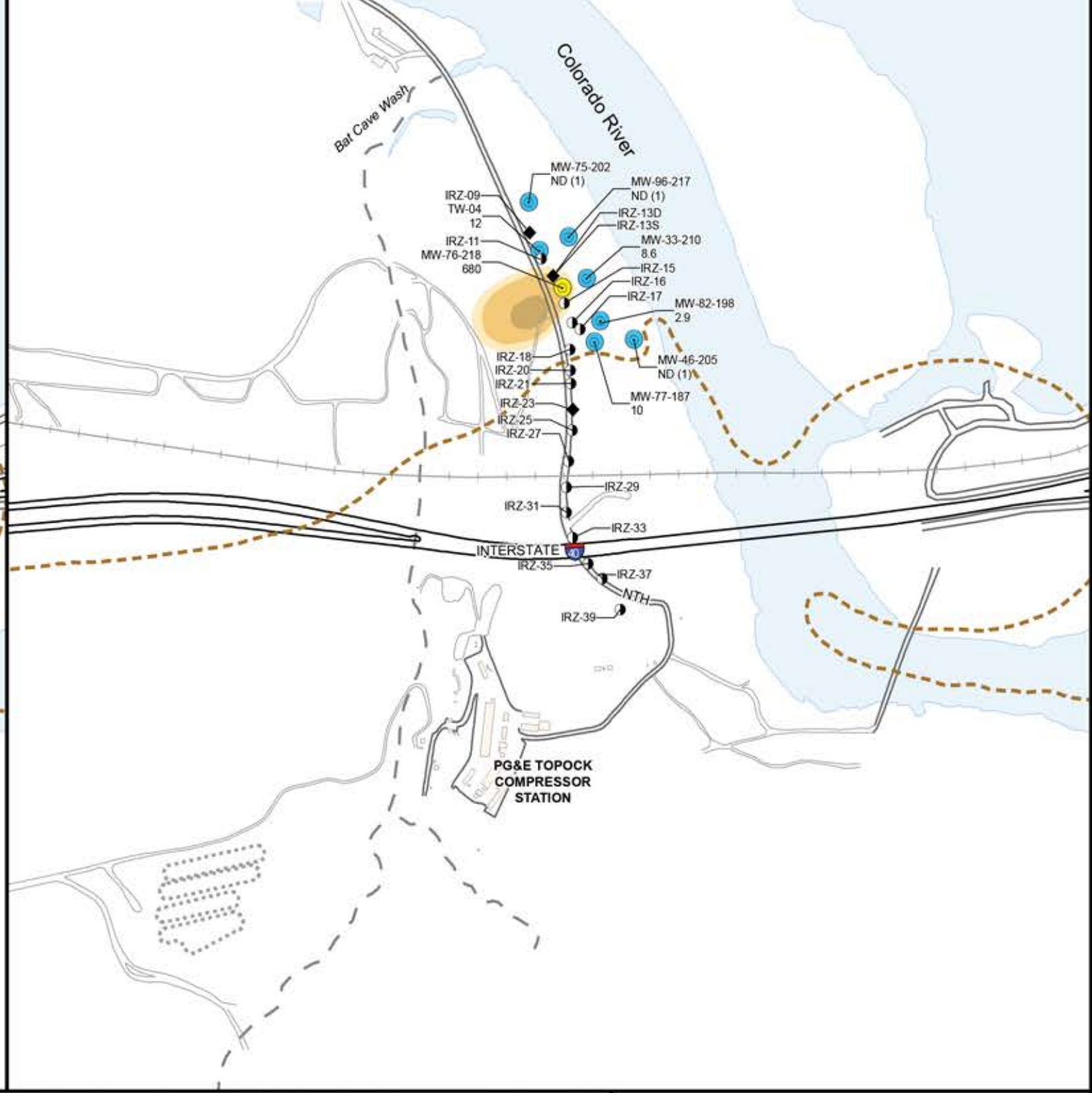


**LAYER 4  
ELEVATION INTERVAL 300-350**



**LAYER 5  
ELEVATION INTERVAL 250-300**



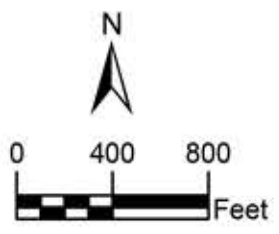
**LEGEND**

- Groundwater Monitoring Well
- ◻ Groundwater Well Completed in Bedrock
- NTH IRZ Injection Well
- ◆ NTH IRZ Extraction Well
- - - Bat Cave Wash
- - - Approximate bedrock contact (per depth interval)

- Cr6 Concentrations**
- ≤ 32 µg/L (or not detected [ND])
  - 32 - 100 µg/L
  - 100 - 1,000 µg/L
  - 1,000 - 10,000 µg/L
  - > 10,000 µg/L

- Cr6 contours**
- 32 µg/L
  - 100 µg/L
  - 1,000 µg/L
  - 10,000 µg/L

MW-60BR-245 — Well ID  
7.1 — Cr6 concentration in µg/L



- Notes:**
1. Cr6 = Hexavalent Chromium
  2. µg/L = Micrograms Per Liter
  3. NTH = National Trails Highway
  4. IRZ = In-situ Reactive Zone
  5. ND = non-detect at the reporting limit
  6. First Quarter 2022 results are presented (February - March 2022).
  7. If more than one concentration is available for a monitoring well, then the maximum concentration is used for contouring.

FIRST QUARTER 2022  
QUARTERLY PROGRESS REPORT  
PG&E TOPECO COMPRESSOR STATION  
NEEDLES, CALIFORNIA

**Cr6 CONCENTRATIONS IN  
GROUNDWATER BY  
ELEVATION INTERVAL**



FIGURE  
**3.2b**

City: Citrix Div/Group: IM Created By: K. SINSABAUGH Last Saved By: PSJ01045  
Topeco (RC000753.802D.Q4182)  
T:\ENVI\PG&E\_Topock\GEC\MXD\IGMP\1022\Final\Figure3.2b\_Cr6 Concentrations\_Layer4 and 5\_V2.mxd 5/16/2022 3:36:05 PM