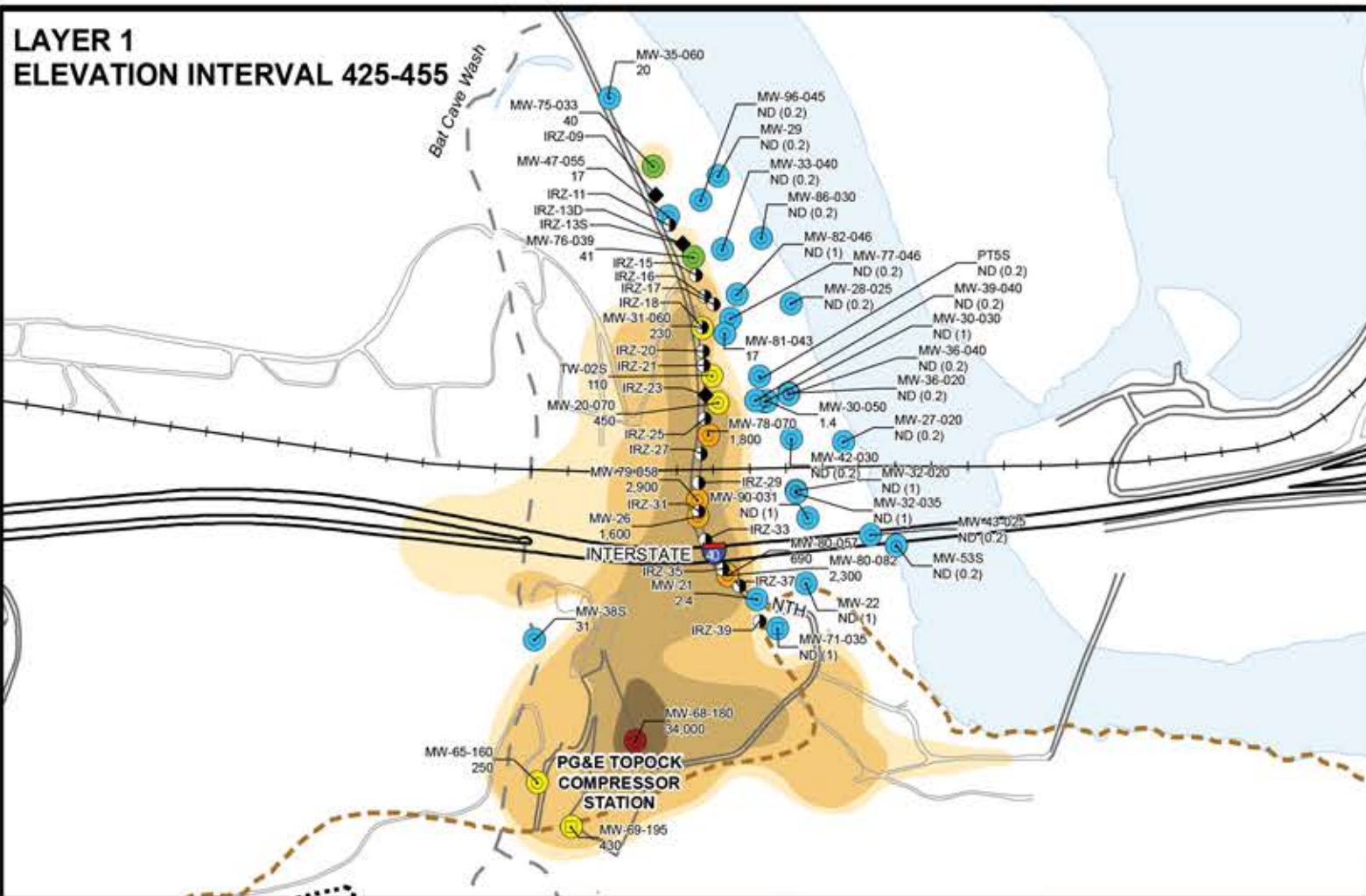
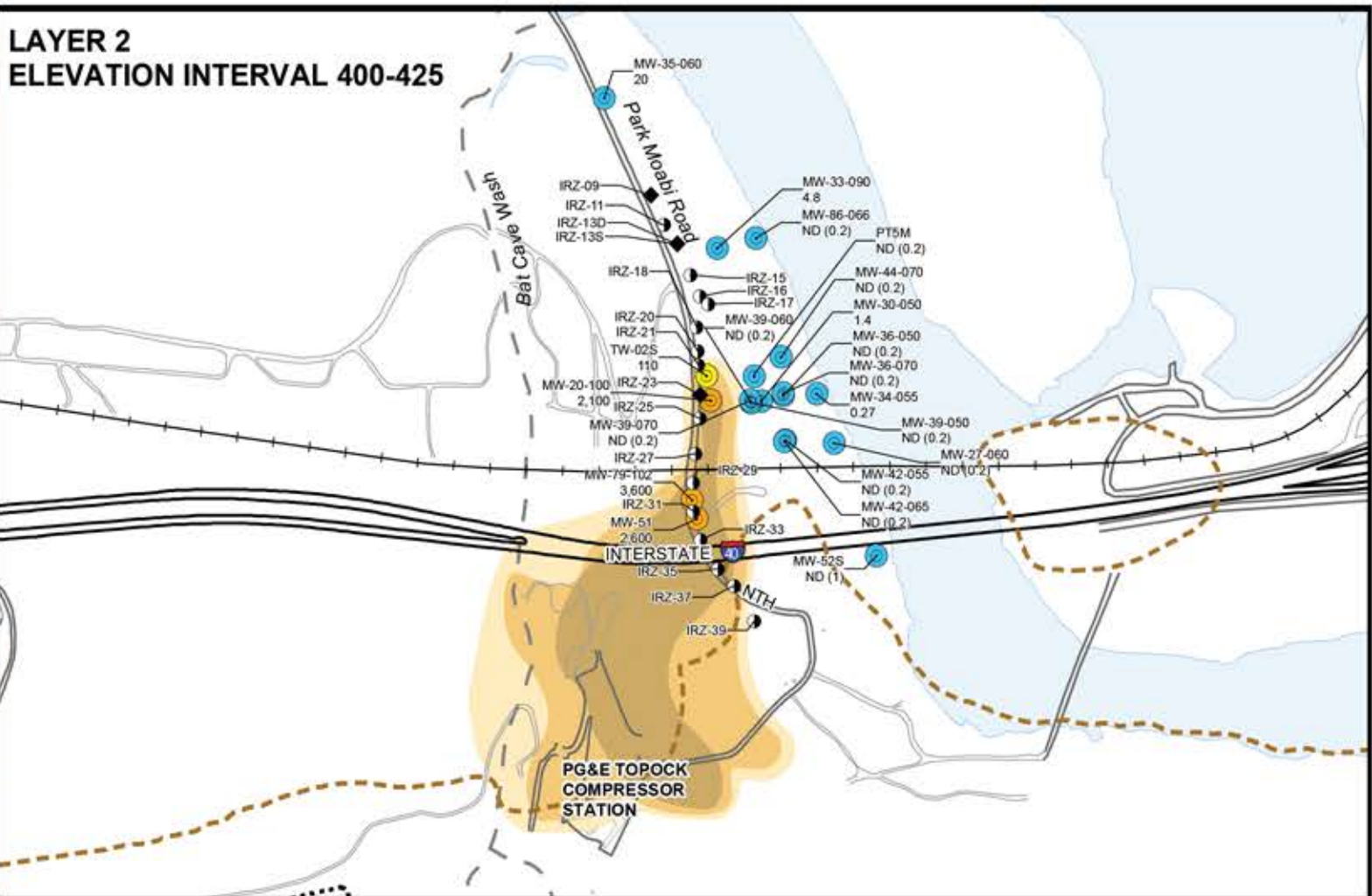


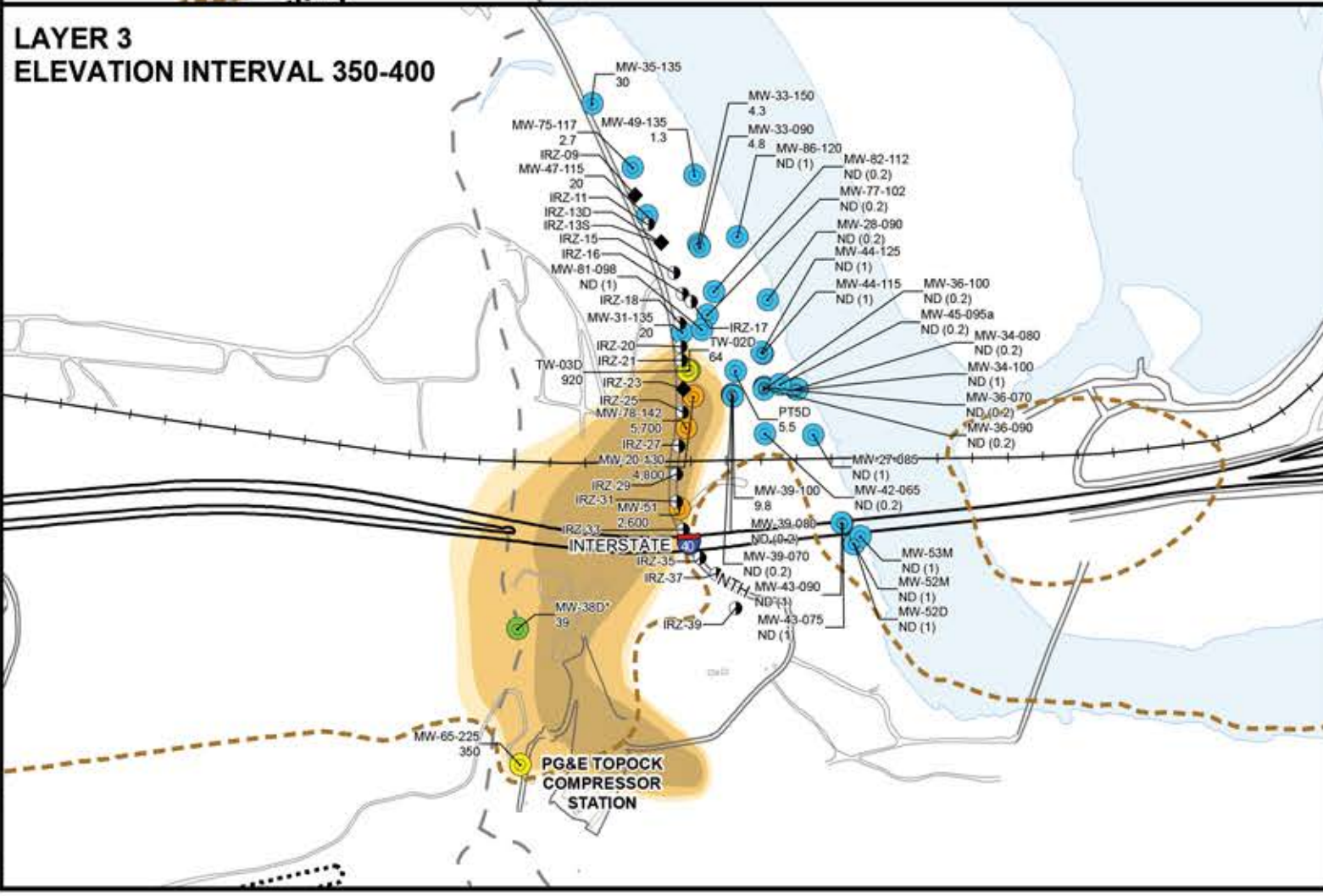
**LAYER 1
ELEVATION INTERVAL 425-455**



**LAYER 2
ELEVATION INTERVAL 400-425**



**LAYER 3
ELEVATION INTERVAL 350-400**



LEGEND

- Groundwater Monitoring Well
- Groundwater Well Completed in Bedrock
- NTH IRZ Injection Well
- NTH IRZ Extraction Well
- Bat Cave Wash
- Approximate bedrock contact (per depth interval)

Cr6 Concentrations

- ≤ 32 µg/L (or not detected [ND])
- 32 - 100 µg/L
- 100 - 1,000 µg/L
- 1,000 - 10,000 µg/L
- > 10,000 µg/L

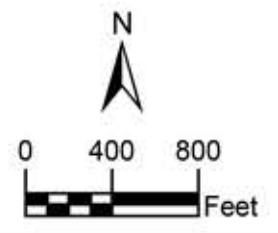
Cr6 contours

- 32 µg/L
- 100 µg/L
- 1,000 µg/L
- 10,000 µg/L

Notes:

1. Cr6 = Hexavalent Chromium
2. µg/L = Micrograms Per Liter
3. NTH = National Trails Highway
4. IRZ = In-situ Reactive Zone
5. ND = non-detect at the reporting limit
6. First Quarter 2022 results are presented (February - March 2022).
7. If more than one concentration is available for a monitoring well, then the maximum concentration is used for contouring.
8. * = concentration not used for contouring

MW-55-120 — Well ID
7.96 — Cr6 concentration in µg/L



FIRST QUARTER 2022
QUARTERLY PROGRESS REPORT
PG&E TOPOCK COMPRESSOR STATION
NEEDLES, CALIFORNIA

**Cr6 CONCENTRATIONS IN
GROUNDWATER BY
ELEVATION INTERVAL**

ARCADIS

FIGURE
3.2a

City: Citrix Dwi/Group: IM Created By: K. SINSABAUGH Last Saved By: PSJ01045
Topock (RC000753.602D.C4182)
T: ENV\PE_Topock\GEC\MXD\GMP1\022\Final\Figure3.2a_Cr6 Concentrations_Layer 1 to 3_V1.mxd 5/18/2022 5:02:37 PM